



LARIMER COUNTY OIL AND GAS REGULATIONS CODE AMENDMENTS

MARCH 22, 2020



PURPOSE OF OPEN HOUSE



- ✓ Inform the community about the revised schedule and our approach to update the oil and gas regulations, including recent guidance from the BCC.
- ✓ Inform the community about upcoming opportunities and approaches for participation in the update.
- ✓ Share information received from the oil and gas questionnaire.
- ✓ Gather community input about the project schedule and approach
- ✓ Understand what the primary interests of the community are regarding oil and gas regulations.

HOW TO PARTICIPATE TONIGHT AND IN THE FUTURE



- Provide input in the Q&A box. Staff will reserve some time at the end of meeting to respond to your question or will provide a written response on the web page with a few days after the meeting.
- Participate in polls that will be presented in this meeting.
- Use the raise hand button to make a verbal comment. Please try to limit your comments to 2 minutes so that everyone has an opportunity to speak.
- Send your ideas or comments to us by email at LUC2020@co.larimer.co.us or by posting a comment on the web page at larimer.org/planning/luc2020/public-comment

PROJECT OBJECTIVES AND GOALS

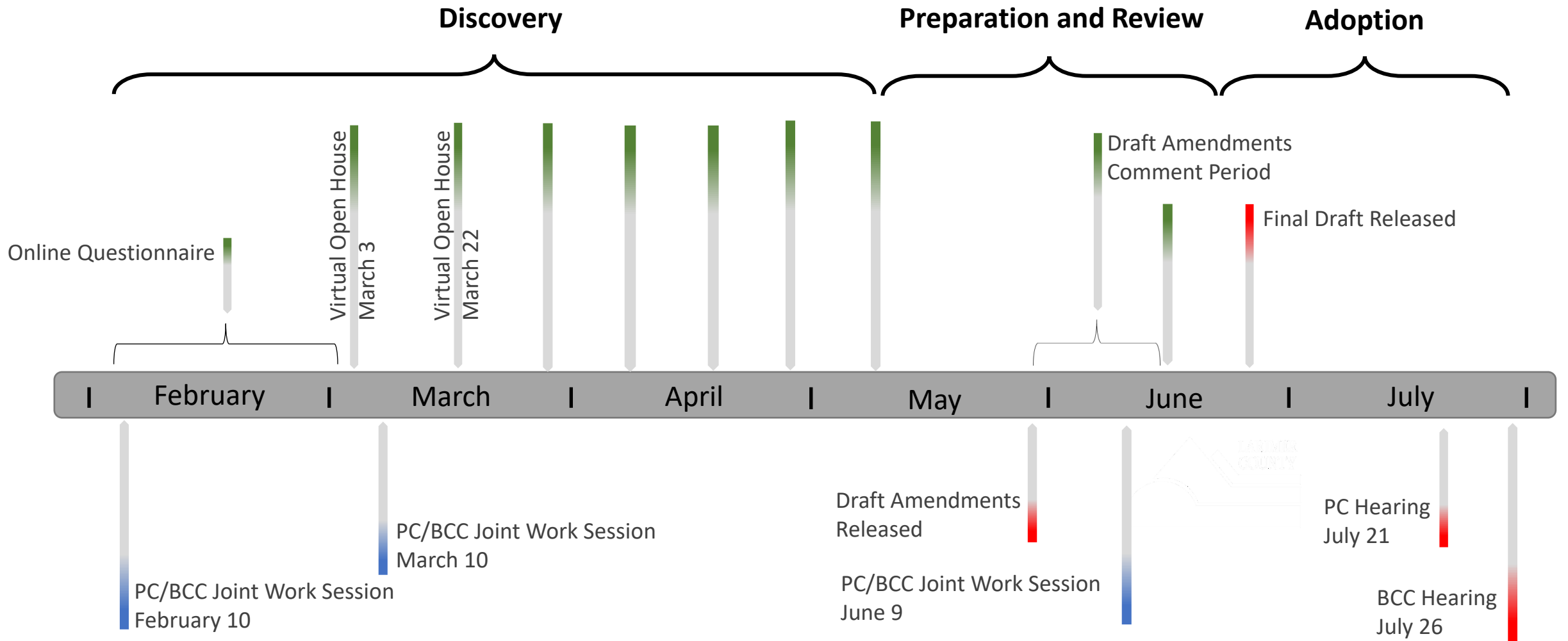


The objective of the oil and gas code amendments is to prepare oil and gas regulations that exceed or align with the recently adopted Colorado Oil and Gas Conservation Commission regulations by:

- Analyzing COGCC and other community regulations to identify areas for improvement,
- Gathering input from all interested members of the public,
- Assessing the input obtained, and
- Developing a body of regulation that applies Best Management Practices for consideration of the BCC.

The goal is to accomplish the project objective in a manner that protects the public's health, safety and welfare, and the environment and wildlife resources

OIL & GAS CODE AMENDMENTS PROPOSED TIMELINE





2019 OIL AND GAS PRODUCTION

	County	Annual Oil Sales
1	WELD	168976604
2	ADAMS	8607691
3	RIO BLANCO	3571187
4	ARAPAHOE	3185433
5	JACKSON	1872775
6	LARIMER	1478272
7	GARFIELD	1455231
8	CHEYENNE	904418
9	LINCOLN	624532
10	BROOMFIELD	490342

	County	Annual Nat. Gas Sales
1	WELD	949959261
2	GARFIELD	480161569
3	LA PLATA	266565397
4	RIO BLANCO	52728574
5	MESA	52409253
6	LAS ANIMAS	42959254
7	ADAMS	21266194
8	ARCHULETA	16640676
9	YUMA	15064366
10	MOFFAT	8432660
11	LARIMER	8045782

REGULATORY ANALYSIS

Comparison of Oil and Gas Regulations

TOPIC	STATE			
		<u>Boulder County</u>	<u>Commerce City</u>	<u>Larimer County</u>
Public Notice	Rule 303.e	Most strict	State equivalent	More strict
Meeting with Neighbors	Rule 304.c(20)	Most strict	More strict	More strict
Setbacks from Homes	COGCC Rule 604	Most strict	More strict	Less strict
Alternative Loc. Analysis	COGCC Rule 304.b(2)	No standard	State equivalent	No standard
Noise Standard	COGCC Rule 423	Most strict	More strict	Less strict
Planning Documents	COGCC Rule 304.c	Less strict	More strict	Less strict
Baseline Water Monitoring	COGCC Rule 609; 318A	More strict	More strict	State equivalent
Electric Equipment	No requirements	More strict	Most strict	More strict
Air Quality Mitigation	5 CCR 1001-9 (Reg. 7)	More strict	More strict	State equivalent
Fencing	COGCC Rule 604.c(2)M	State equivalent	Most strict	More strict
Local Gov. Inspections	No requirements	State equivalent	More strict	State equivalent
Traffic Management	COGCC Rule 303.c(6)	More strict	More strict	More strict
Liquid Pipeline req.	No requirements	Most strict	More strict	More strict
Dust Mitigation	COGCC Rule 304.c(5)	State equivalent	More strict	State equivalent
Visual Mit. / Landscaping	COGCC Rule 424, 425	More strict	More strict	State equivalent
Wildlife Protection	COGCC 1200 rules	More strict	State equivalent	More strict
Emergency Response	COGCC Rule 304.c(8); 602.j.	More strict	More strict	State equivalent
Enforcement	COGCC Rules 523-525	State equivalent	Less strict	Less strict
Financial Assurance	COGCC 700 Series	State equivalent	More strict	State equivalent
Reverse Setbacks	No requirements	State equivalent	More strict	State equivalent

AREAS THAT CURRENTLY EXCEED COGCC RULES



Public Notice

Meeting with Neighbors

Electric Equipment

Fencing

Traffic Management

Liquid Pipeline requirement

Wildlife protections

AREAS THAT ARE EQUIVALENT TO COGCC RULES



- Baseline Water Monitoring**
- Air quality mitigation**
- Local Government Inspection**
- Traffic Management**
- Dust Mitigation**
- Visual Mit. / Landscaping**
- Emergency Response**
- Financial Assurance**
- Reverse Setbacks (Reciprocal Setbacks)**

AREAS THAT ARE LESS STRICT THAN COGCC RULES



Setbacks from Homes
Alternative Location Analysis
Noise Standards
Planning Documents
Enforcement

SETBACKS FROM HOMES



- **2,000-foot setback from school facilities** – current and future school property
 - Non-waivable
- **500-foot setback from homes**
 - Waivable by impacted residents
- **500 - 2,000 foot setback from homes**
 - Less than 2,000 feet allowed through COGCC hearing if operator can demonstrate “substantially equivalent protections”
 - The Commission will consider:
 - 1) BMPs proposed, 2) size and duration of the proposed oil and gas operations, 3) the local government’s disposition, 4) the results of the alternative location analysis, 5) location in relationship to infrastructure, and 6) Outreach efforts to affected residents.

ALTERNATIVE LOCATION ANALYSIS



- (a) required when the location is within 2,000 feet of building units,
- (b) if a location is within 2,640 feet of a Public Water System supply well that is completed in a Type III Aquifer or is a groundwater under the direct influence of surface water well as defined in Rule 411.b.(1) (Rule 304)
- (c) within 2,000 feet of a municipal or county boundary
- (d) in floodplains,
- (e) high priority habitat,
- (f) where there is a surface owner protection bond.

NOISE STANDARDS

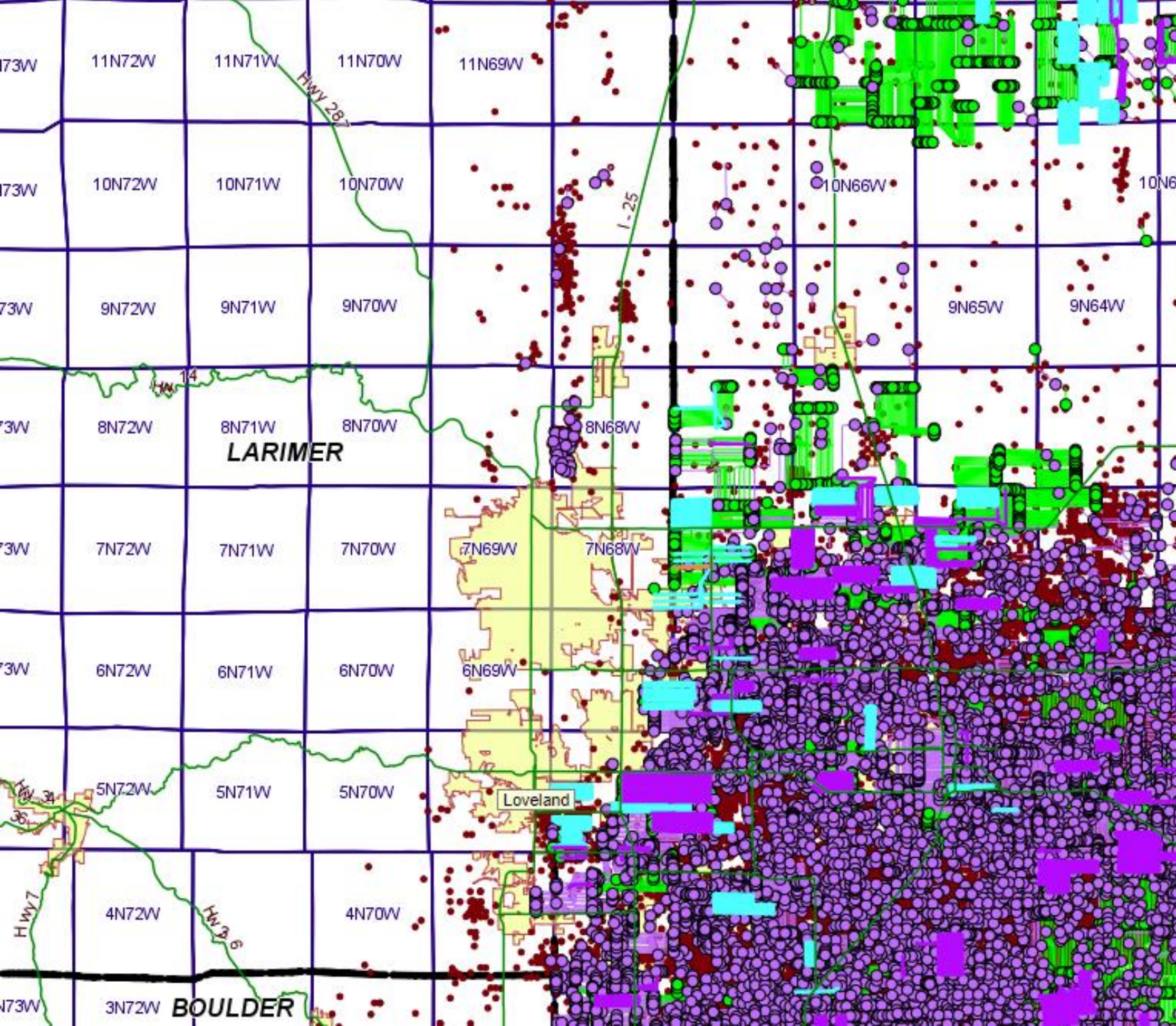


- Lowered maximum A-scale noise levels during oil and gas development
- Adopted a noise standard for C-scale noise of 60db(C).
(Rule 423.b.) *(65db(C) during drilling and completion)*

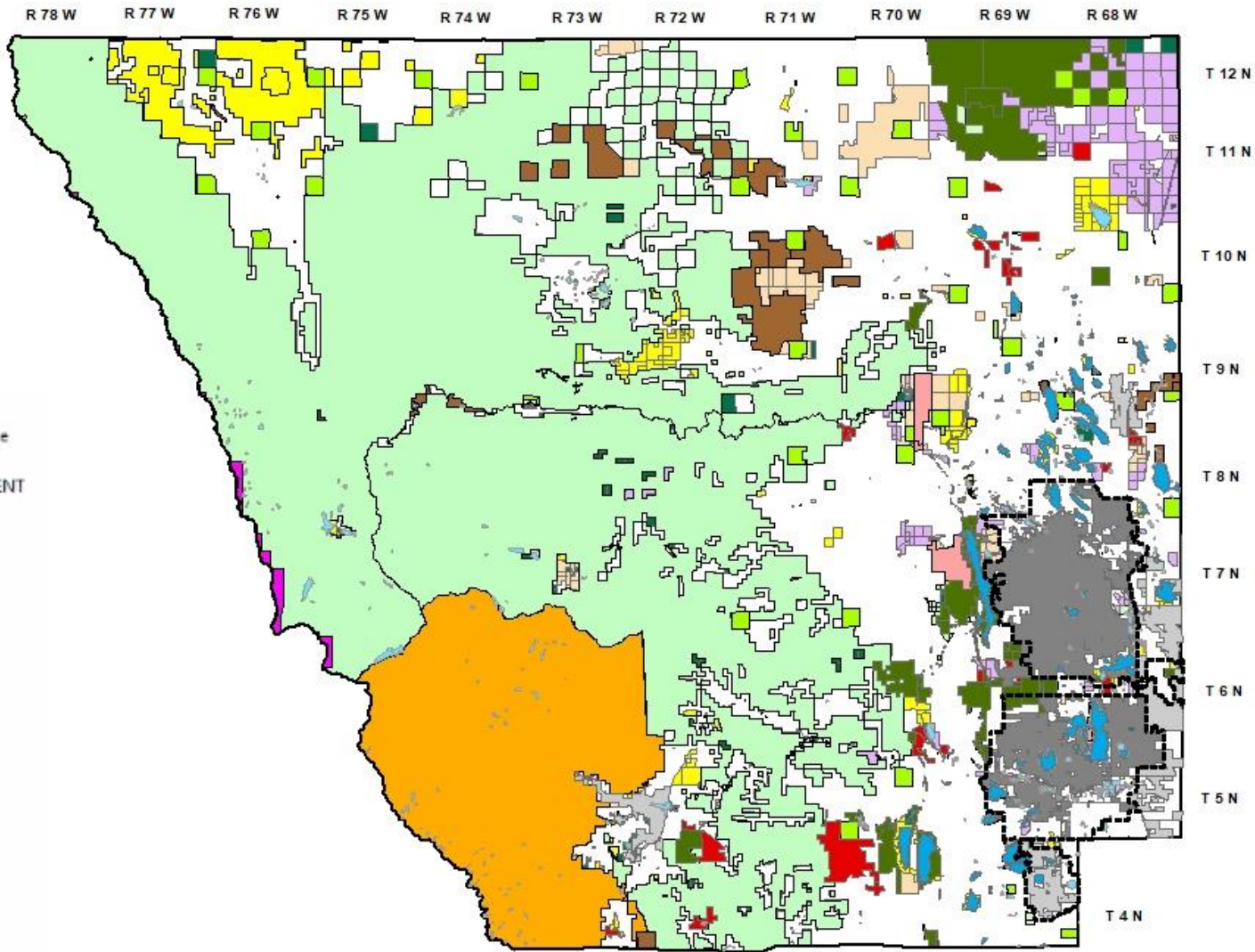
PLANNING DOCUMENTS



- **Larimer County:** Larimer County requires a dozen plans in its oil and gas regulations and additional plans in Section 8 “Standards for all Development.” (LUC Section 17.3 and Section 8).
- **COGCC Requirement:** COGCC Rule 304.c lists 20 separate plans that are required including a
 - alternative location analysis
 - cumulative impacts plan,
 - community outreach plan,
 - topsoil protection plan,
 - operations safety management plan,
 - flood shut-in plan,
 - interim reclamation plan.
- **Commerce City:** Requires 26 separate plans including a
 - Risk Management Plan,
 - Emergency Resource Mobilization/Cache Plan



COGCC Map - current and future oil and gas development



- Public Lands
- County Parks & Open Space STATUS
 - CONSERVATION EASEMENT
 - PROTECTED
- BLM Lands
- Colorado DOW
- Colorado State Forest
- Colorado State Parks
- National Forest Lands
 - NFS
 - Rocky Mountain NP
 - State School Board Land
- Tax Exempt Parcels
- OWNERTYPE
 - County
 - City or Town
 - Federal
 - State

Larimer County public lands

Larimer County Land Use and Site Inventory Assessment (LUSIA)



R 78 W R 77 W R 76 W R 75 W R 74 W R 73 W R 72 W R 71 W R 70 W R 69 W R 68 W

T 12 N

T 11 N

T 10 N

T 9 N

T 8 N

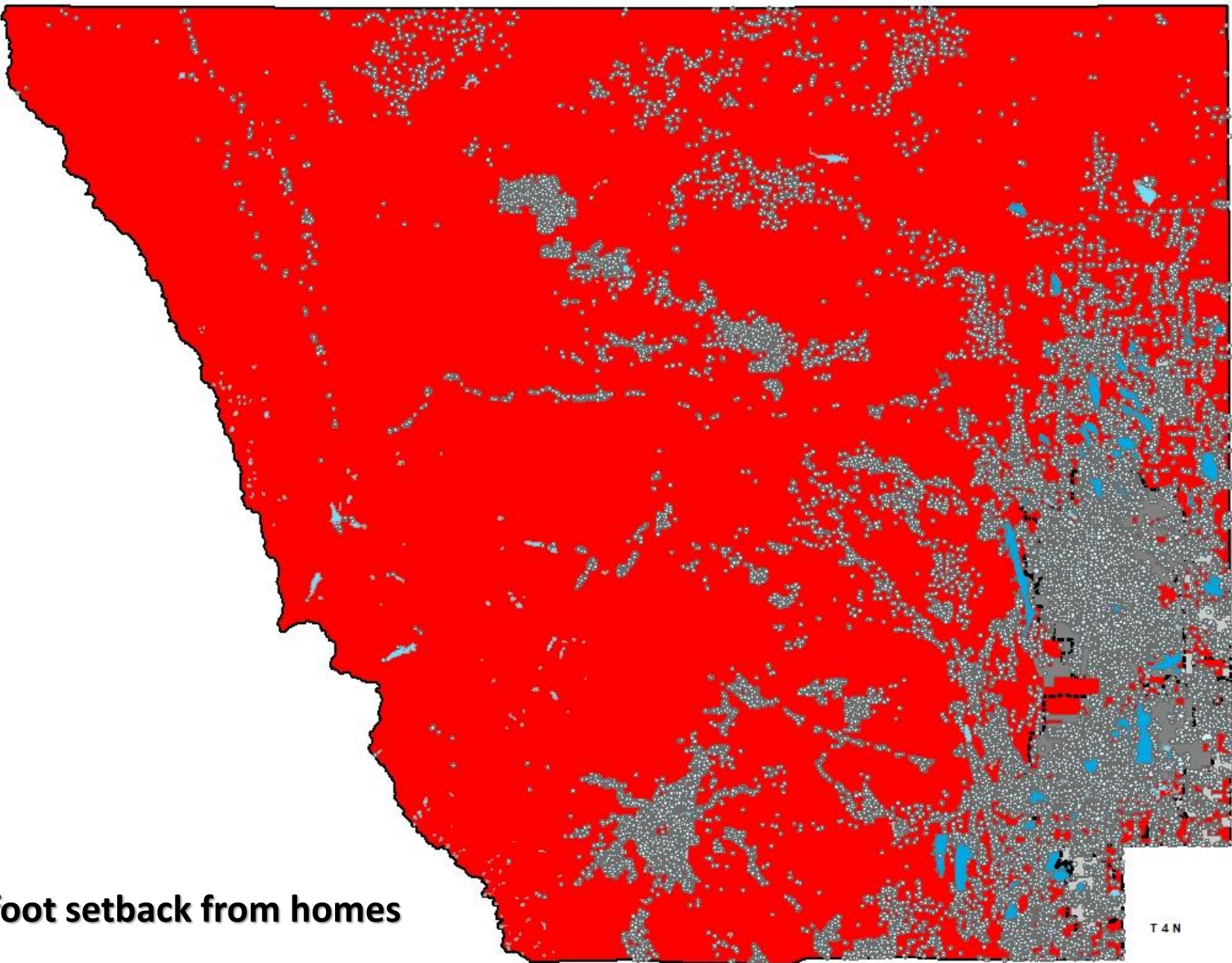
T 7 N

T 6 N

T 5 N

T 4 N

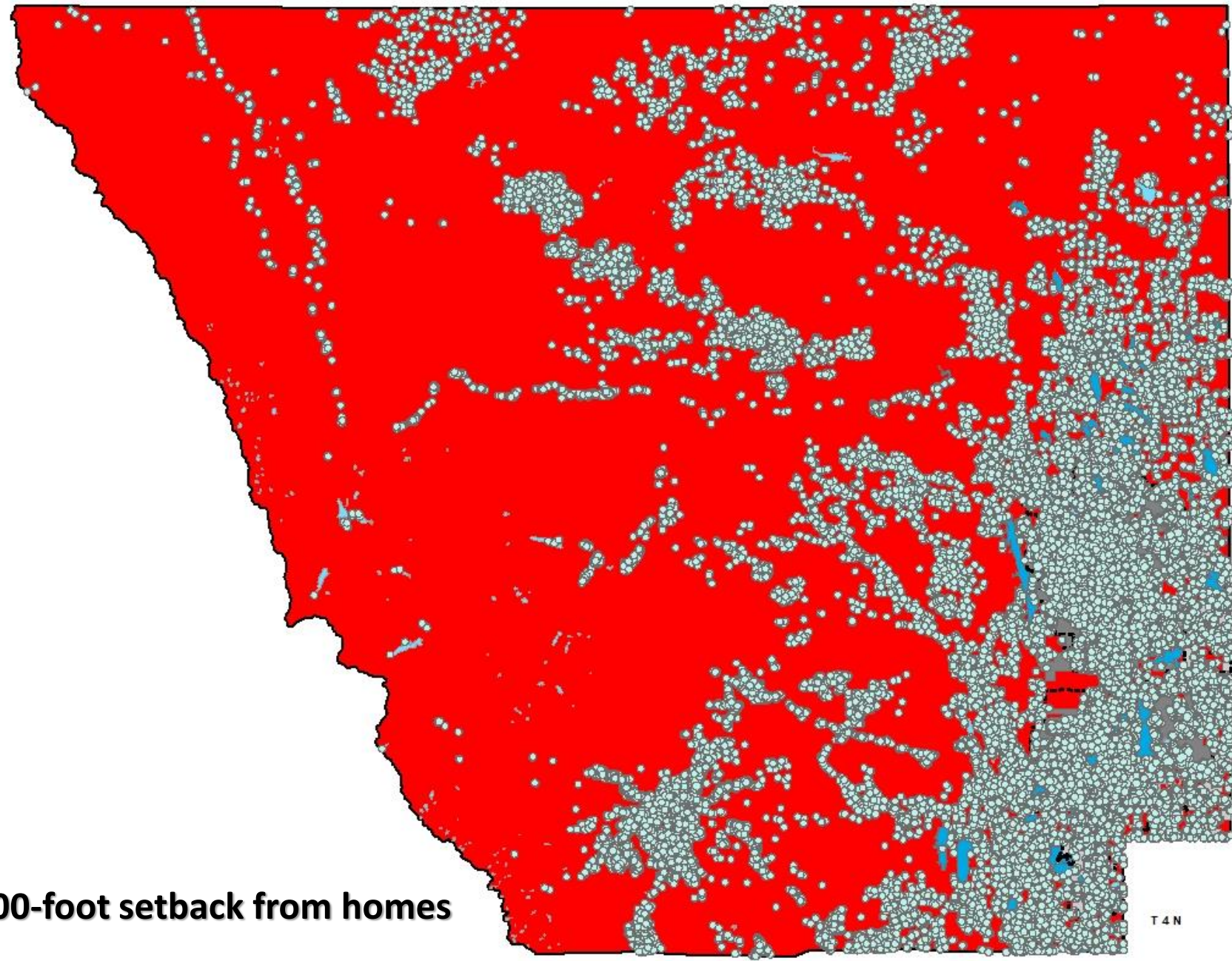
500-foot setback from homes



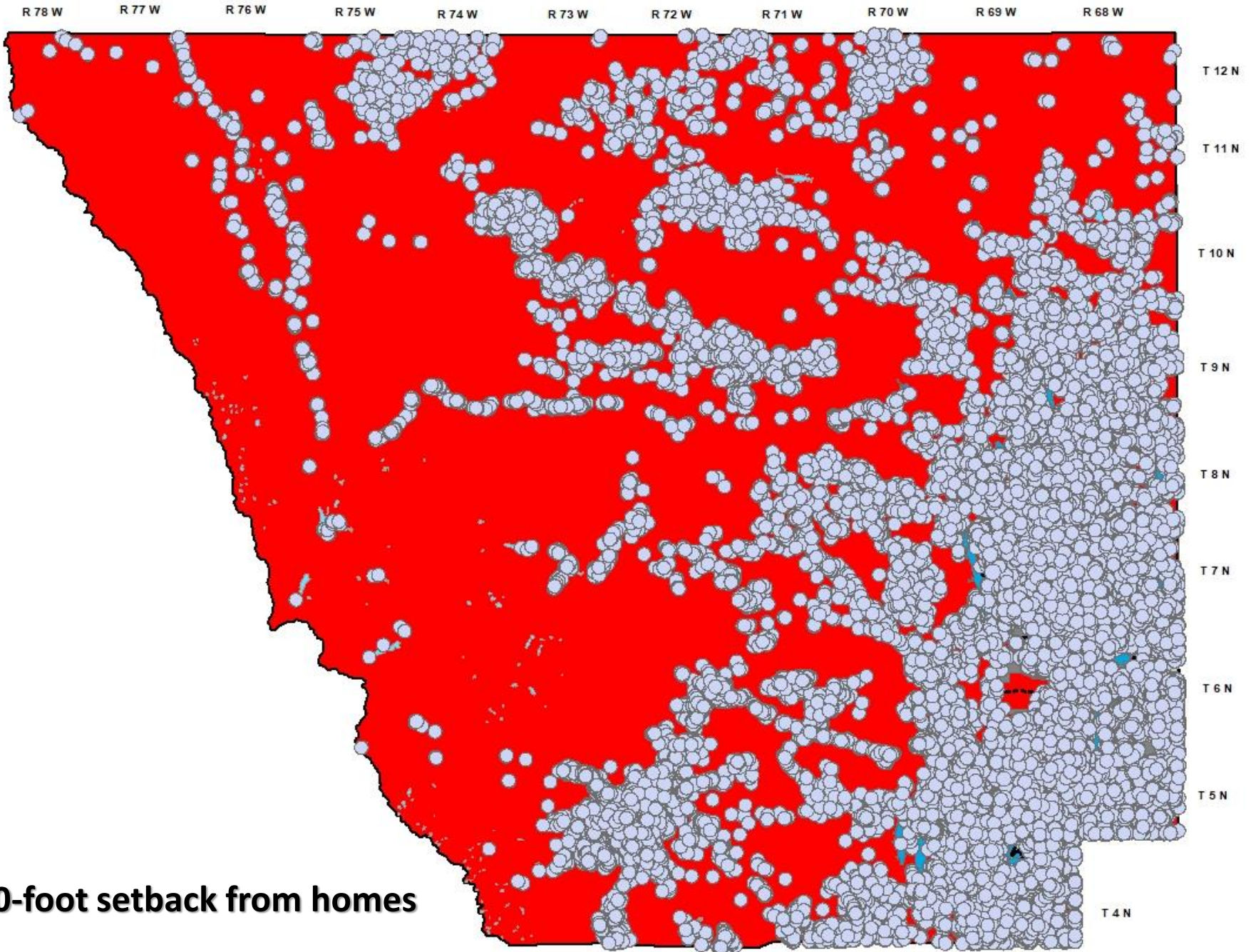


R 78 W R 77 W R 76 W R 75 W R 74 W R 73 W R 72 W R 71 W R 70 W R 69 W R 68 W

T 12 N
T 11 N
T 10 N
T 9 N
T 8 N
T 7 N
T 6 N
T 5 N
T 4 N



1,000-foot setback from homes



2,000-foot setback from homes