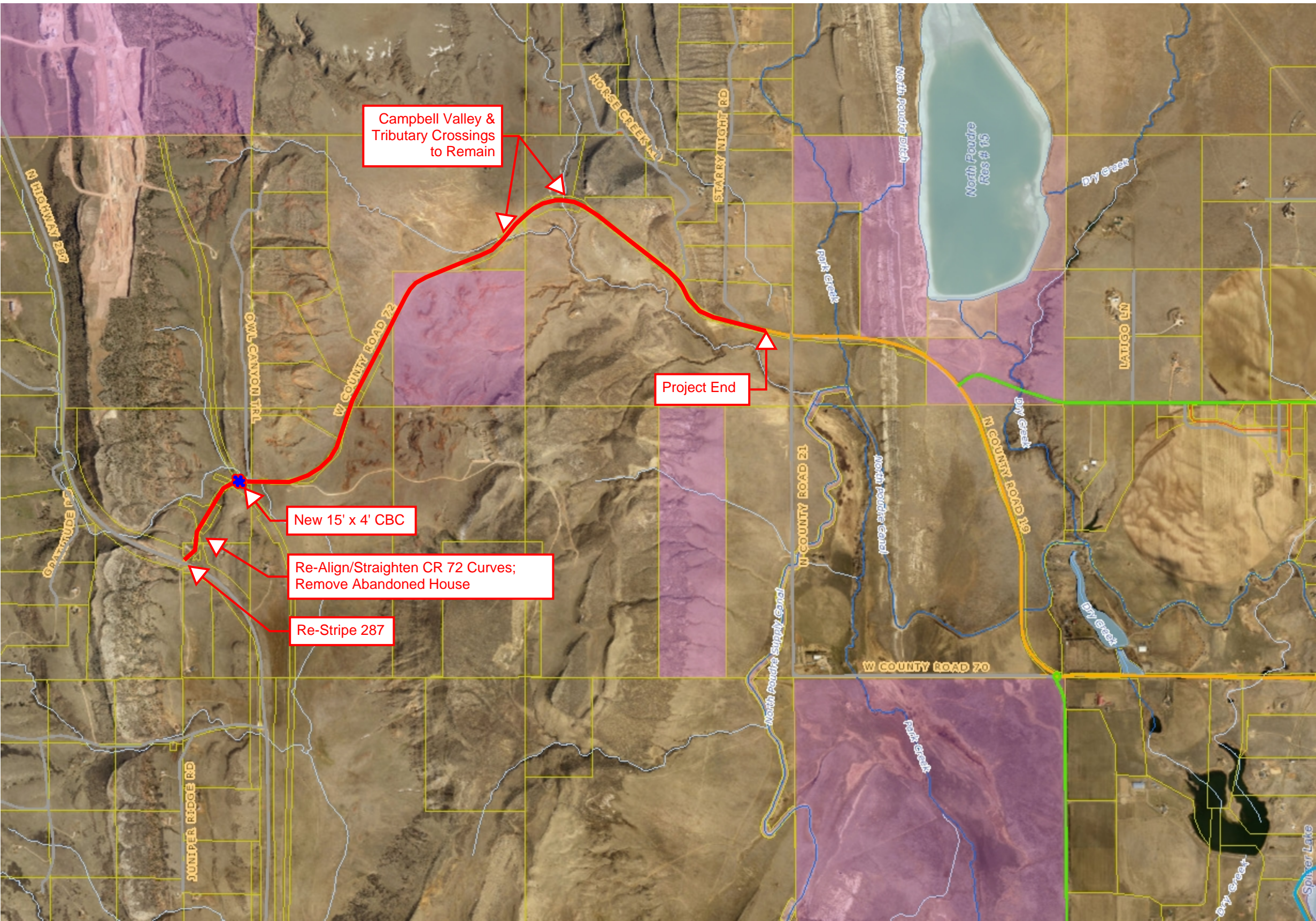


Larimer County Web Map



- Legend**
- Cameron Peak Fire Area Fill
 - Cameron Peak Fire Perimeter
 - Road Information
 - 04 Functional Classification
 - New Value
 - Major Arterial
 - Minor Arterial
 - Major Collector
 - Minor Collector
 - Minor Collector
 - Local
 - Other
 - N/A
 - Railroads
 - Major Road System
 - Road System
 - Lakes and Ponds
 - Major Rivers and Streams
 - Rivers and Streams
 - County Boundary
 - Rocky Mountain National Park
 - Incorporated Areas
 - City or Town
 - County
 - State
 - Federal
 - Other
 - Tax Parcels

Notes

0.57 Miles 0 0.29 0.57

1: 24,000

NAD_1983_HARN_StatePlane_Colorado_North_FIPS_0501_Feet



This map was created by Larimer County GIS using data from multiple sources for informal purposes only and may not have been prepared for, or be suitable for legal, engineering, or surveying purposes. This map may not reflect recent updates prior to the date of printing. Larimer County makes no warranty or guarantee concerning the completeness, accuracy, or reliability of this content.