

March 24, 2020

LARIMER COUNTY SOLID WASTE POLICY COUNCIL

RE: April 9, 2020

Meeting canceled due to the Coronavirus – written update provided below

1. Notes from the February 13, 2020 meeting will be emailed and available online. July 9th Behavioral Health presentation attached.
2. Mission, Vision, Values and Outcomes:
 - a. Susie Gordon and Mick Mercer have drafted a document for the committee members consideration
 - b. TAC members reviewed the draft and support the draft being shared with the committee members and then onto the policy council
3. Develop a tour schedule: Lou Perez and Caroline Mitchell are scheduling a tour of the existing and proposed landfill sites – they are also gauging interest in whether policy committee members would like to go to locations in Wyoming to see transfer station operations. Caroline is working on a “doodle poll” to gauge interest and determine when it would be best to schedule due to COVID 19 restrictions.
4. After much discussion the TAC is recommending that the Policy Council consider removing all dates from the IGA rather than trying to amend the IGAs to reflect dates that may or may not occur. We will schedule that for discussion in July.
5. Hauler licensing began and was suspended during the increased protective measures related to COVID 19 however hauler input is being sought by Caroline and Lou regarding new ordinance requirements – we anticipate discussion at the July meeting.
6. The BOCC approved the documents required by CDPHE to begin the State permitting process for the new Landfill.
7. We had begun a presentation for the Policy Council related to the Behavior Health facility and will reschedule the presentation for the July meeting.

That gets everyone up to date except to note that Stephen Gillette resigned his employment and his last working day was March 13, 2020. Lou Perez is acting director.

A decorative background featuring a light blue to dark blue gradient. On the left and right sides, there are white line-art patterns resembling circuit boards or fiber optic networks, with various lines and circular nodes.

SOLID WASTE POLICY COUNCIL

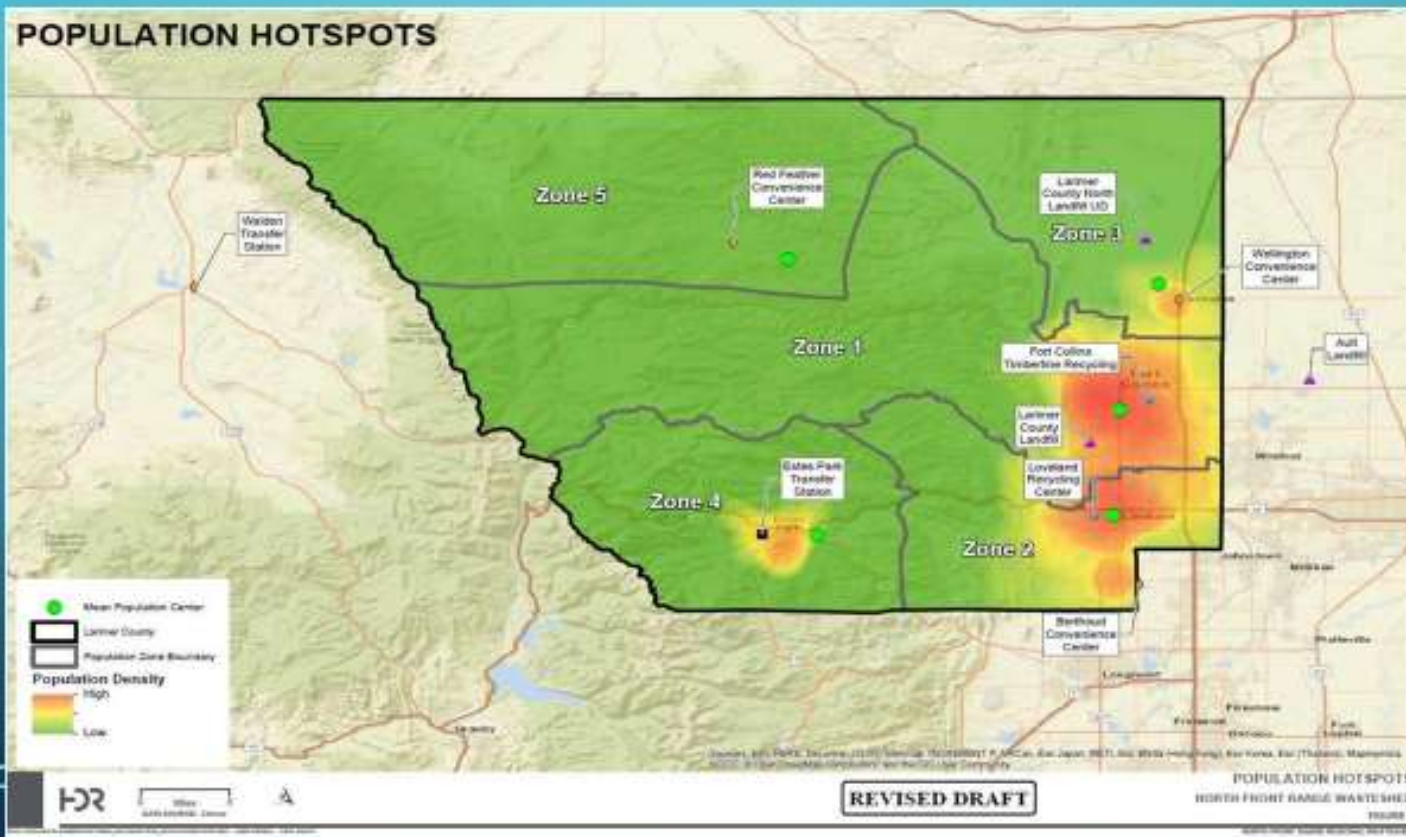
JULY 9, 2020

PRESENTERS: LAURIE STOLEN, BEHAVIORAL HEALTH DIRECTOR AND LAURIE
KADRICH, DIRECTOR OF COMMUNITY PLANNING & INFRASTRUCTURE SERVICES,
LARIMER COUNTY

SITE SELECTION

- 8 other properties were considered for purchase
- Ranged in size from 5-40 Acres
- Ranged in value from \$1M – \$7M
- Locations considered included:
 - Fort Collins, Timnath, Loveland, and Johnstown

MAP OF POTENTIAL SITES VS. POPULATION



SITE SELECTION PROCESS

- 2017 County hired HDR to conduct a Behavioral Health Land Use and Site Design Process and Report
- Scope of work expanded for HDR; to include short and long term needs, travel distances, population density, and the proposed landfill site plan
- Study recommended the current area with appropriate screening and buffers
- January 2018, BOCC identified the site as the new location and it was used throughout the 2018 Sales Tax campaign

HDR LAND USE CHARRETTE OUTCOMES:

Pros

- County owned property minimizing cost for the land
- Timing – land is available
- Fewer immediate neighbors with nearby protected land
- Equidistant
 - “mid-county”
 - Equidistant from Ft. Collins and Loveland
 - Relatively equidistant from nearest medical providers
 - Near the population centers of Larimer County
- An open site
 - Potential for future growth / services
 - Provides opportunity for outdoor activities
- Utilities are near the site
- Fiber optics are on Taft (adjacent to site)

Cons

- Transportation to the location
- Travel distance for first responders
- Sewer does not run to site
- Presence of prairie dogs
- New construction rather than renovation (potential increase in cost)
- Equally inconvenient for all
- Future watershed infrastructure

MASTER PLANNING & SITE SELECTION

- Ditesco hired in May 2019, as a Project Manager for Behavioral Health and later for the Transfer Station
- Page Southerland Page, Inc. hired in October 2019, to continue site analysis and master planning efforts for the Behavioral Health Facility
- Completed a site analysis evaluating:
 - Zoning, traffic, noise, topography, wind, sun, views, and costs for campus options and programming

SITE CONSTRUCTION & PLANNING

- Regular communications with Behavioral Health, Facilities and Solid Waste
- HDR still assisting with Wasteshed Master Plan
- Ditesco leading engineering and design work for both projects
- Shared responsibility for neighborhood outreach and infrastructure improvements