

LARIMER COUNTY EMERGENCY OPERATIONS CENTER SITUATION REPORT

This report is intended to provide information and status in quickly evolving situations and is subject to change.
This report can be shared publicly.

INCIDENT INFORMATION:

REPORT SUBMITTED BY: Lori R. Hodges, Larimer EOC Manager

REPORT DATE/TIME: 08/10/2020 1700 MST

INCIDENT NAME: Larimer County COVID-19 Response

INCIDENT START DATE/TIME: 03/09/2020 11:00MST

INCIDENT LOCATION: Larimer County

LARIMER OEM OR EOC POC NAME/CONTACT INFO:

Lori Hodges, OEM
(303) 656-3214 [mobile]
hodgeslr@co.larimer.co.us

CURRENT SITUATION:

DESCRIPTION: The Larimer County EOC remains at a Level III activation and has been activated for 156 days to continue to respond to the effects of the Novel Coronavirus 2019 (COVID-19) pandemic. Tom Gonzales met with CDPHE last week to discuss our current COVID-19 indicators and due to the work of everyone in our community, we are able to maintain our current variance. Please see the attached news release for additional information.

Larimer County and our partners are working collaboratively to ensure we are able to continue moving forward without further effects to our workforce and businesses. Efforts to educate and engage the community in order to avoid revoking our variance have been approached regionally. This is not an effort we can do alone and need the community to work with us. More information can be found at <https://fortcollinschamber.com/keep-noco-open/>.

Public Health Operations: There are currently 1,932 confirmed and suspect cases in Larimer County with 35 fatalities reported as of this morning. The Case Contact and Monitoring Group continues to issue isolation and quarantine orders as required to limit the spread of the virus. The Compliance team continues to focus on education and outreach. This team received 8 complaints last week but followed up with 29 complaints that had been pending. Last week this team also made contact with 53 employers. The Outbreak Team is currently working with 2 new outbreaks. 8 confirmed outbreaks are hopefully going to be resolved this week.



Testing: 257 people were tested in Fort Collins on Tuesday (8/4) with 21 positive cases. This was a record high positivity rate of 8.17%. 100 people were tested in Loveland on Wednesday (8/5) with 6 testing positive. This is the second highest positivity rate of 6% for this event. Another 260 people were tested on Friday with results pending. Results are coming in more quickly than we have seen in previous weeks. Larimer Health continues to look at other options to get test results quickly.

UCHealth: The collection center located at Medical Center of the Rockies is slated to open on Monday, Aug. 10. It will be open from 9 a.m.-5 p.m. Monday through Friday and 10 a.m.-2 p.m. Saturday and Sunday on the east side of the facility. Patients will be asked to enter the campus via Spirit Lake Ct on the north side of the facility and follow the signs around to the south east corner of the campus to the collection center registration area. Once the specimen has been collected, the patient will follow signs to exit back on to Rocky Mountain Avenue.

The center is UCHealth's third center to open in Larimer County and one of a handful of UCHealth locations statewide to offer both the nasal swab test, which detects the presence of the COVID-19 virus in the nasal passages, and the blood test, which measures for the presence of antibodies. For more information about the tests offered or to schedule an appointment for testing at this or any other UCHealth location, patients can visit the Testing for COVID-19 page on [uchealth.org](https://www.uchealth.org). Hours, directions, and appointments for all active sites are all available through the online registration accessed at: <https://www.uchealth.org/services/infectious-diseases/coronavirus-covid-19/antibody-testing/>

Behavioral Health: Summitstone crisis counseling program (CCP) known as Colorado Spirit is ready to begin deploying and provide community support. The CCP will continue to partner with Connections for their warm line at 970-221-5551 with after hours calls rolling to SummitStone's crisis unit for response.

Services they provide:

- Individual and group crisis counseling
- Basic supportive or educational contact
- Community networking and support
- Assessments, referrals, and resources
- Psychoeducational materials

Job Opportunities: LCDHE continues to post job postings and hire additional staff as quickly as possible to increase capacity for on-going operations.

Public Information: Our major school districts issued their reopening plans this week. Poudre School District, Thompson School District, Estes Park Schools and the St. Vrain School District have all decided to delay in-person start to October and begin the 2020-2021 school year virtually. Private and Charter Schools may have different plans for re-opening. Public Health is meeting with them individually to discuss plans.

School guidance from the LCDHE can be found here: <https://www.larimer.org/health/communicable-disease/coronavirus-covid-19/schools-and-childcare/covid-19-resources-schools>.

Poudre School District: [https://www.psdschools.org/sites/default/files/PSD/communications/2020-21%20School%20Year%20Plans/PSD Together Again.pdf](https://www.psdschools.org/sites/default/files/PSD/communications/2020-21%20School%20Year%20Plans/PSD%20Together%20Again.pdf)

Thompson School District:
<https://fliphtml5.com/kowve/frvc>

Estes Park School District:
<https://www.estesschools.org/Page/1085>

St. Vrain School District:
<https://coronavirus.svvsd.org/index.html>

Recovery: The Recovery Collaborative consists of 17 task forces in sectors from throughout all of Larimer County. The three areas of focus are: Community Support; Workforce and Economic Development; and Government, Education and Policy. The Collaborative has also taken a triple bottom line approach, with a focus on equity, environment and economy. The Collaborative will be working this week to finalize project ideas to take to governing boards for consideration. Additionally, the Collaborative will be launching the

Community Support & Equity Advisory Board and will be developing a Communications Working Group to facilitate outreach and plug in with public information efforts at a regional level.

Due to above average conditions for wildfire potential, Larimer County went into fire restrictions on 7/21/2020. More information on fire restrictions can be found at the following link: <https://www.larimer.org/spotlights/2020/07/21/larimer-county-adopts-fire-restrictions-open-fires>
Larimer Emergency Management and the American Red Cross have developed guidelines and procedures for evacuation and shelter operations in a COVID environment.

LARIMER COUNTY COVID-19 DATA

Risk Score: Medium

We must stay diligent in our social distancing, handwashing and face coverings to keep our community safe.



Risk Index

Low Medium High

✓ New Positive Cases in last 24 hours
(08/09/2020)



✓ Days in past 14 with >15 new cases



✚ Days in past 14 with >10% positive tests



🏥 COVID patients in hospital (08/07/2020)



🏢 % Hospital Utilization (08/07/2020)



🏠 % ICU Utilization (08/07/2020)



Test Results

Test Type	# Tests	# Positive	Pct.
PCR	41,333	1,502	3.6%
Serology	12,724	456	3.6%
TOTAL	54,057	1,958	3.6%

% Tested*

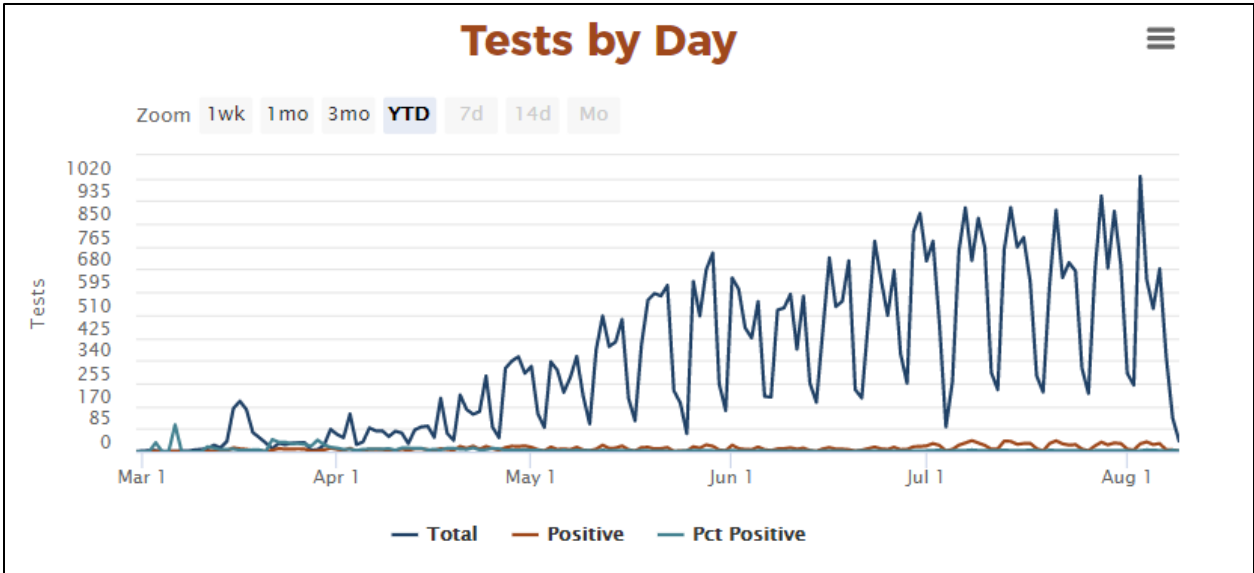
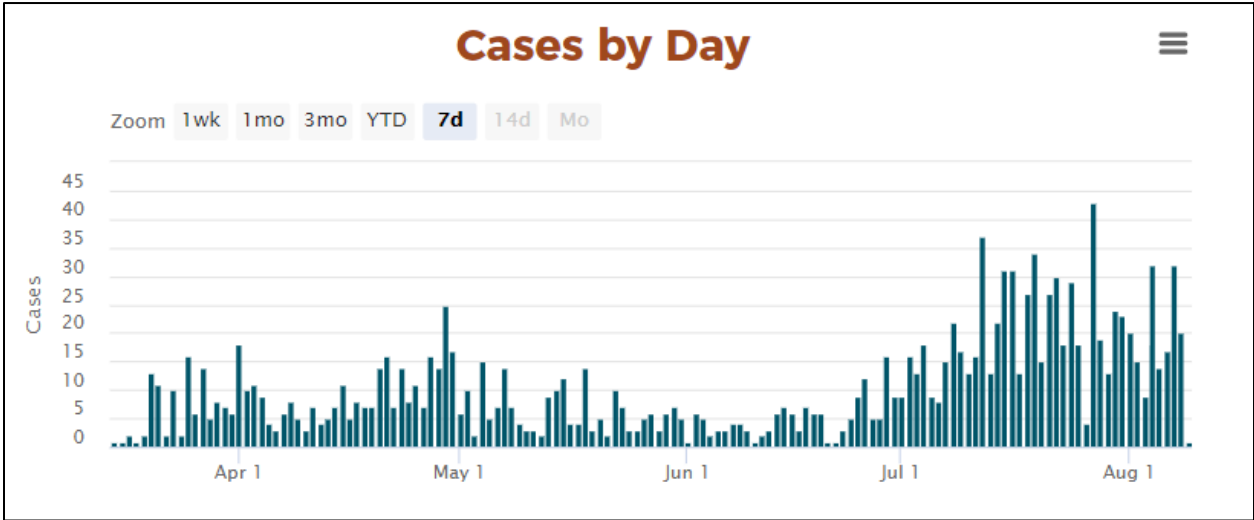
15.4%

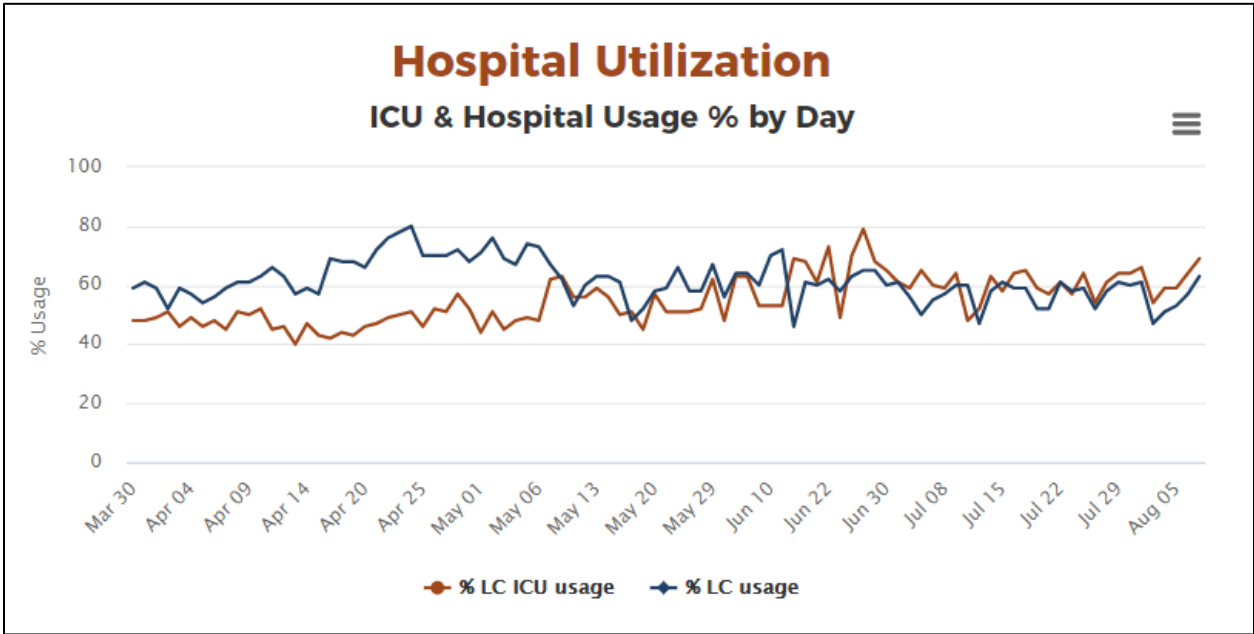
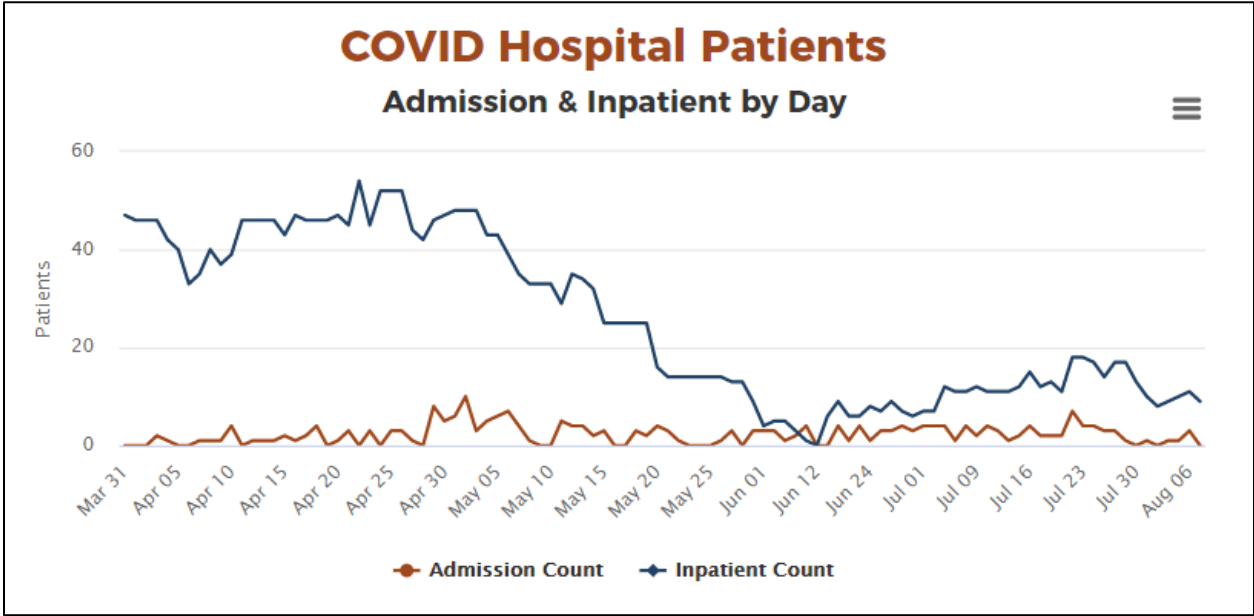
~ One in 6



350,362 residents

*May be lower as some may have been tested multiple times





COVID - 19 Colorado Case Summary



Data is updated daily by about 4 p.m. and includes cases reported through the previous day.

50,660 Cases	6,616 Hospitalized	63 Counties	588,547 People Tested	801,739 Test Encounters	1,858 Deaths Among Cases	1,736 Deaths Due to COVID-19	513 Outbreaks
-----------------	-----------------------	----------------	-----------------------------	-------------------------------	--------------------------------	------------------------------------	------------------

*

Colorado Case Counts by County

Adams	6,491	Kit Carson	51
Alamosa	230	La Plata	212
Arapahoe	7,311	Lake	77
Archuleta	36	Larimer	1,554
Baca	15	Las Animas	17
Bent	9	Lincoln	8
Boulder	2,046	Logan	651
Broomfield	473	Mesa	306
Chaffee	303	Mineral	18
Cheyenne	9	Moffat	31
Clear Creek	30	Montezuma	112
Conejos	23	Montrose	305
Costilla	23	Morgan	685
Crowley	72	Otero	71
Custer	11	Ouray	13
Delta	121	Park	42
Denver	10,224	Phillips	19
Dolores	1	Pitkin	187
Douglas	1,734	Prowers	53
Eagle	1,123	Pueblo	693
El Paso	5,006	Rio Blanco	16
Elbert	105	Rio Grande	89
Fremont	125	Routt	125
Garfield	767	Saguache	106
Gilpin	16	San Juan	2
Grand	46	San Miguel	89
Gunnison	272	Sedgwick	11
Hinsdale	3	Summit	328
Huerfano	8	Teller	132
Jackson	9	Washington	48
Jefferson	4,177	Weld	3,709
Kiowa	0	Yuma	63
International	18		
Total Cases	50,660		

COVID-19 in Colorado by Age Group

	Cases	Deaths	CO
0-9	3.03%	0.00%	11.85%
10-19	7.32%	0.16%	13.11%
20-29	21.53%	0.65%	14.61%
30-39	18.16%	0.86%	14.56%
40-49	16.01%	2.74%	13.04%
50-59	14.17%	6.40%	12.67%
60-69	9.14%	12.81%	10.91%
70-79	5.39%	23.41%	6.12%
80+	5.16%	52.96%	3.13%
Unknown	0.09%	0.00%	0.00%

*

COVID-19 in Colorado by Race & Ethnicity

	Cases	Deaths	CO
American Indian or Alaska Native	0.57%	0.70%	0.56%
Asian	2.12%	3.28%	3.12%
Black	4.96%	6.67%	3.92%
Hispanic, All Races	38.41%	22.55%	21.69%
Multiple - Non Hispanic	1.34%	1.35%	2.65%
Native Hawaiian or Pacific Islander	0.38%	0.32%	0.12%
White - Non Hispanic	36.69%	62.97%	67.76%
Other	0.81%	0.43%	0.19%
Unknown/Not Provided	14.72%	1.72%	

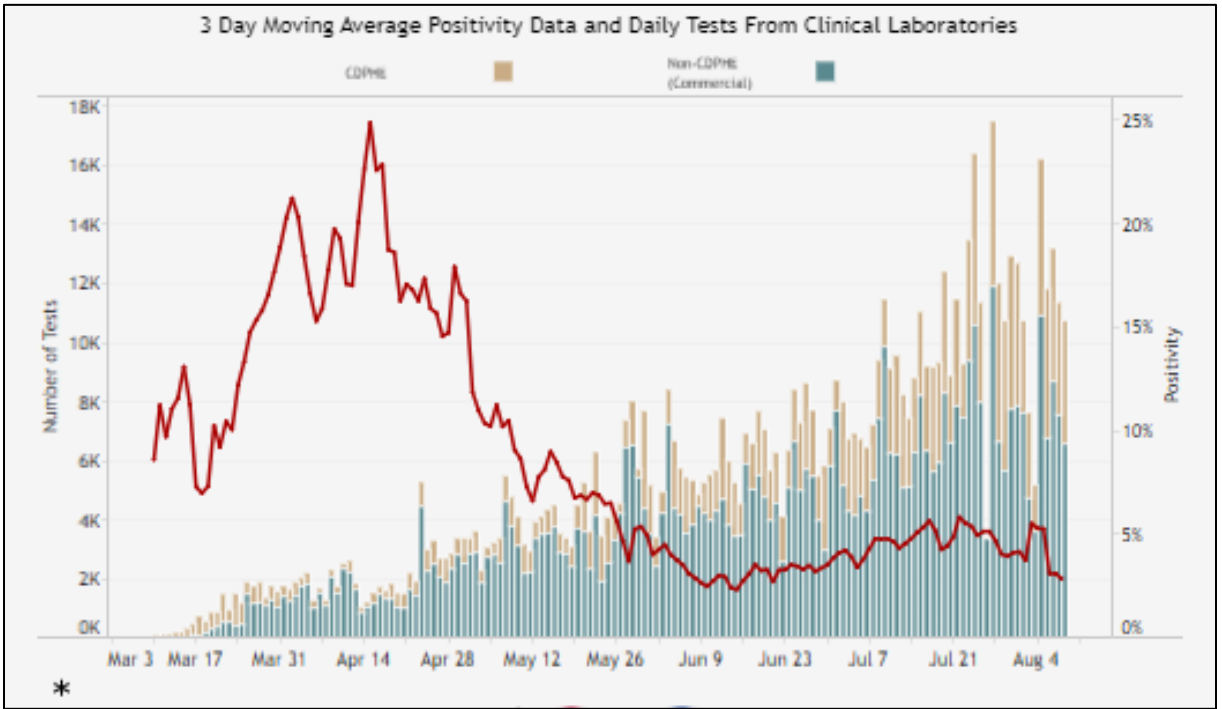
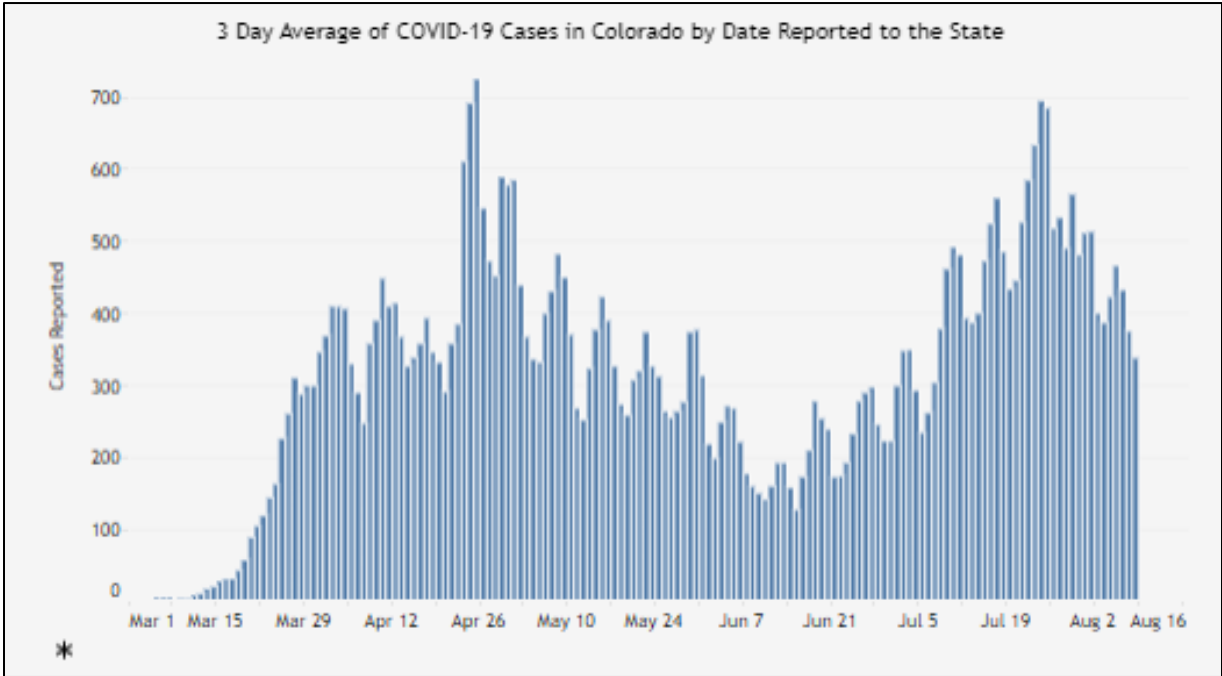
*

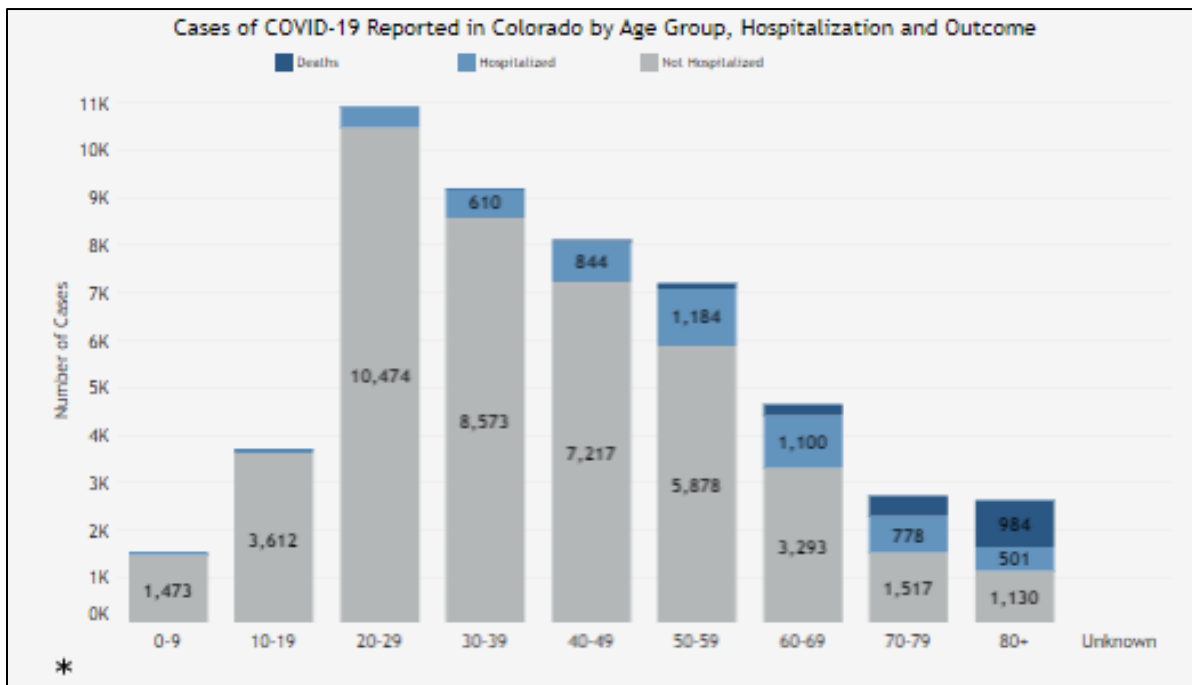
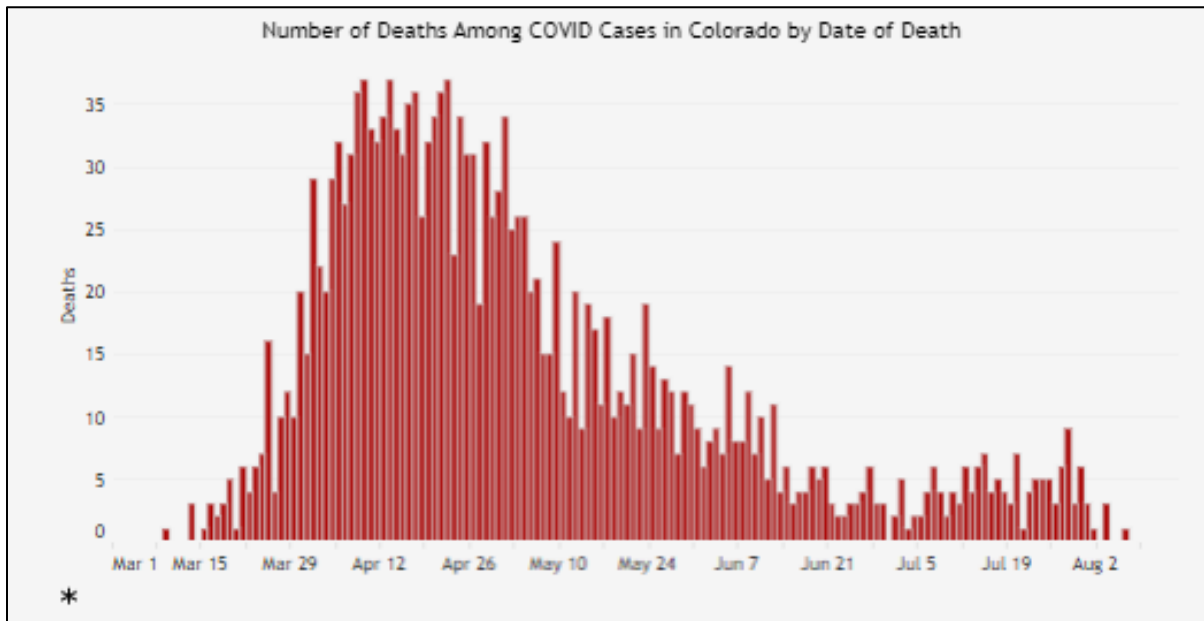
Case Status for Cases & Deaths

	Cases	Cases (%)	Deaths	Deaths (%)
Confirmed	47,367	93.50%	1,517	81.65%
Probable	3,293	6.50%	341	18.35%
Unknown	0	0.00%	0	0.00%
Total	50,660		1,858	

COVID-19 in Colorado by Sex

	Cases	Deaths
Female	48.58%	44.40%
Male	46.79%	55.33%
Unknown	4.62%	0.27%





END OF REPORT