

## LARIMER COUNTY EMERGENCY OPERATIONS CENTER SITUATION REPORT

This report is intended to provide information and status in quickly evolving situations and is subject to change.  
**This report can be shared publicly.**

### **INCIDENT INFORMATION:**

**REPORT SUBMITTED BY:** Lori R. Hodges, Larimer EOC Manager

**REPORT DATE/TIME:** 07/13/2020 0900 MST

**INCIDENT NAME:** Larimer County COVID-19 Response

**INCIDENT START DATE/TIME:** 03/09/2020 11:00MST

**INCIDENT LOCATION:** Larimer County

**LARIMER OEM OR EOC POC NAME/CONTACT INFO:**

Lori Hodges, OEM  
(303) 656-3214 [mobile]  
hodgeslr@co.larimer.co.us

### **CURRENT SITUATION:**

**DESCRIPTION:** The Larimer EOC remains at a Level III activation and has been activated for 128 days to continue to respond to the effects of the Novel Coronavirus 2019 (COVID-19) pandemic.

**Public Health Operations:** There are currently 1,227 confirmed and suspect cases in Larimer County with 30 deaths reported as of this morning's briefing. The Case Contact and Monitoring Group continues to issue isolation and quarantine orders as required to limit the spread of the virus. We have started to see an increase in daily cases which is an early warning indicator and we continue to see a rise in cases in the 20-30 year old range. The Compliance Team has transitioned to day to day consumer protection operations. This team will remain in coordination with case contact and monitoring as well as the outbreak task force to address COVID-19 related issues as they arise. The Outbreak Task Force has worked with 15 facilities that have had confirmed or suspected outbreaks as defined by CDPHE, 8 of those have been resolved. The team continues to work with 7 facilities.

**Testing:** Larimer tested 796 people last week. The Testing Task Force hit maximum registrations for testing on Tues 7/7 and Wed 7/8. Walk-ins are accepted, but it is **STRONGLY** preferred that individuals pre-register so that the sites are not overwhelmed.

Larimer continues to explore potential for collaboration with partner agencies to provide longer term sustainable community testing options throughout the county. Salud began community testing at their locations (including Fort Collins and Estes Park) last week, and walk-ins are accepted. There is no minimum age for testing. See their [flyer](#) for additional details.



Ongoing discussions with UHealth and Loveland to collaborate on a longer term testing site in Loveland. Larimer is also searching for an alternate testing site in Fort Collins. Our access to both of our current testing sites will expire on 7/31.

Expanded antibody testing is now available through UHealth. To see locations and schedule a test: <https://www.uhealth.org/services/infectious-diseases/coronavirus-covid-19/antibody-testing/>

It is important to note that people should not change their behavior in any way should they have antibodies; continuing to follow physical distancing, wash their hands frequently, and stay home if they develop symptoms of COVID-19, regardless of whether they have antibodies to COVID-19 or a negative nasal swab test.

Supply Chain: Larimer OEM urges all partners and businesses to begin ordering PPE supplies now, if they haven't already, in anticipation of fall and winter needs. Even though the supply chain has gotten better over time, there is still a backlog of orders leading to delays of up to 6 weeks to 2 months. The ability for Larimer to secure future supplies from the State/Strategic National Stockpile (SNS) remains unknown at this time.

Recovery: The Recovery Collaborative has developed 17 Task Forces to address recovery needs across multiple sectors. The recovery from this event will be long and will impact almost every person in the county in some way or another. Meetings are occurring multiple times each week in different focus areas, and they involve city/county partners, non-governmental partners, non-profits and volunteer organizations. The initial priority is developing a fundamental understanding of immediate impacts, with the deadline to have those recorded by end of day today. For those who are interested in being involved in the Recovery Collaborative, please contact Laura Levy at [laura@larimerrecovers.com](mailto:laura@larimerrecovers.com).

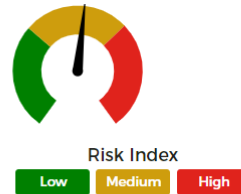


LCDHE and the EOC are currently monitoring early warning triggers. We are noticing upticks in daily positive cases as well as upticks in persons currently being treated in the hospital for COVID. And as stated previously, we are seeing a rise in cases in the 20-30 age group. The positivity percentage remains low at 3.5%.

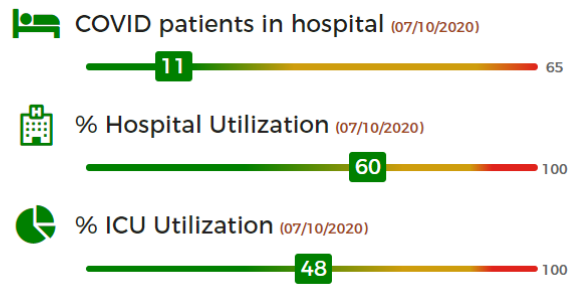
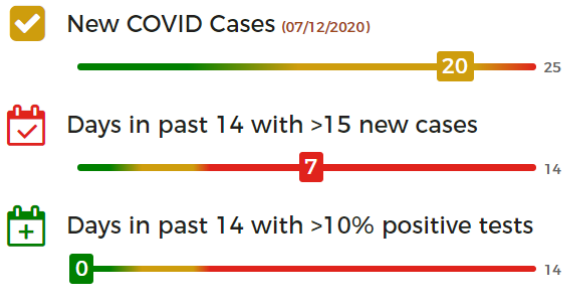
Public Information: The Larimer Health website remains the primary source of public information for the Larimer community. Information regarding COVID is available at: <https://www.larimer.org/health/communicable-disease/coronavirus-covid-19>

**Risk Score: Medium**

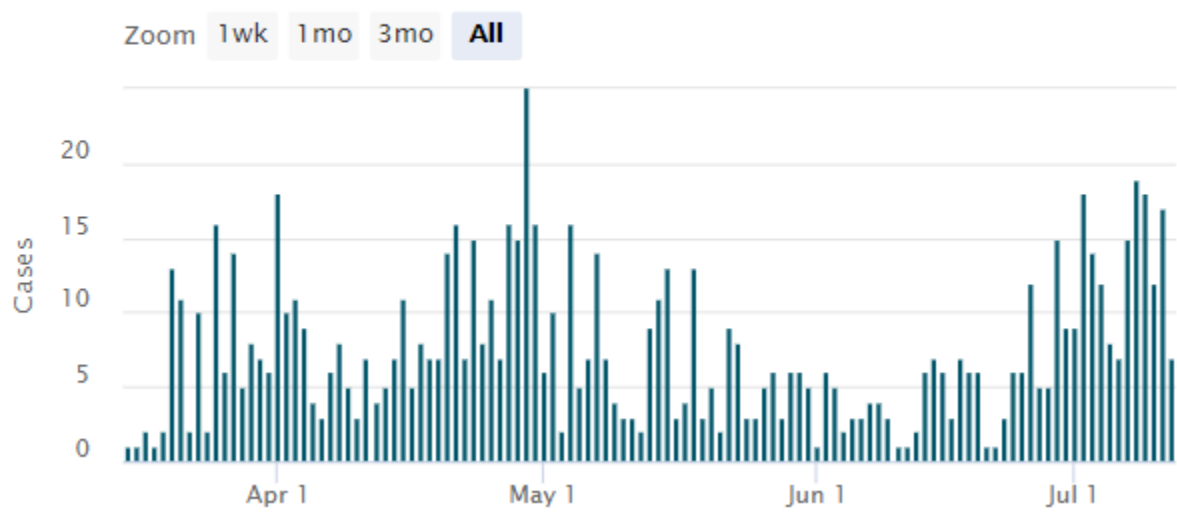
Larimer County has flattened the curve, but the curve doesn't go away. We must stay diligent in our social distancing, handwashing and face coverings to keep our community safe.



Risk Factors (hover for description)



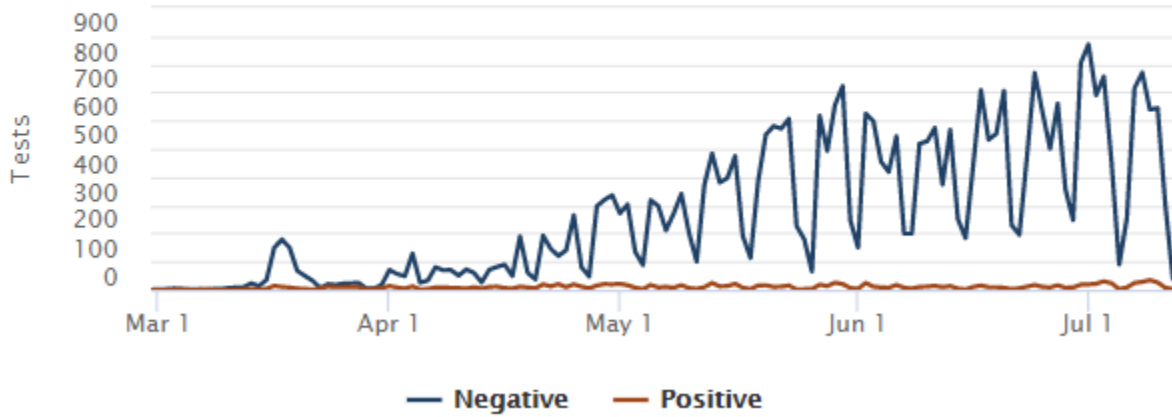
## Cases by Day



# Tests by Day

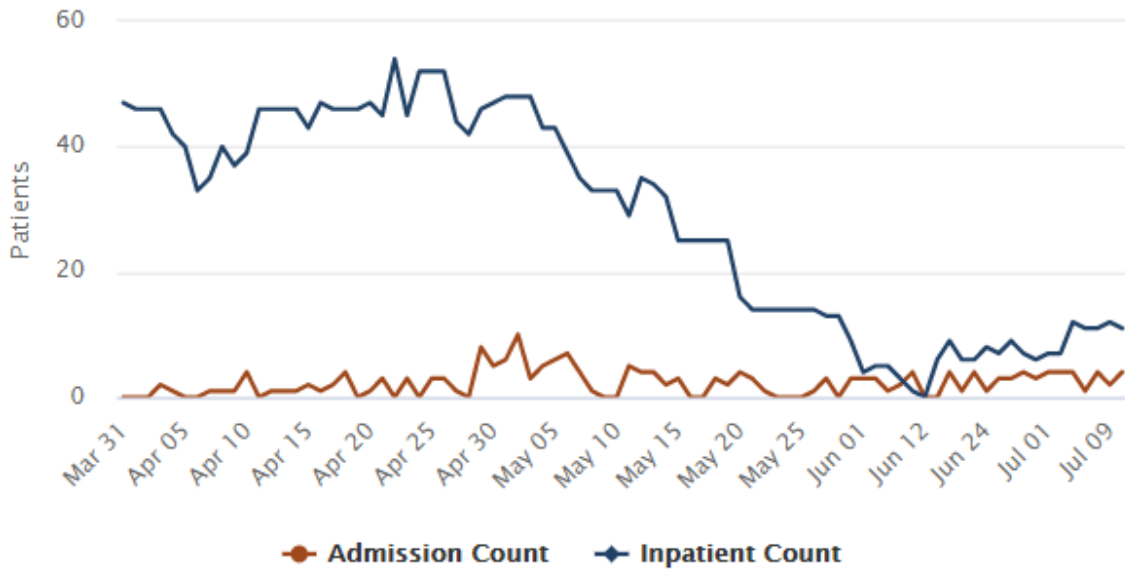


Zoom 1wk 1mo 3mo **All**



# COVID Hospital Patients

## Admission & Inpatient by Day



## Test Results

Test Type	# Tests	# Positive	Pct.
PCR	26,333	940	3.6%
Serology	10,162	338	3.3%
<b>TOTAL</b>	<b>36,495</b>	<b>1,278</b>	<b>3.5%</b>

### % Tested\*

**10.4%**

~ One in 10

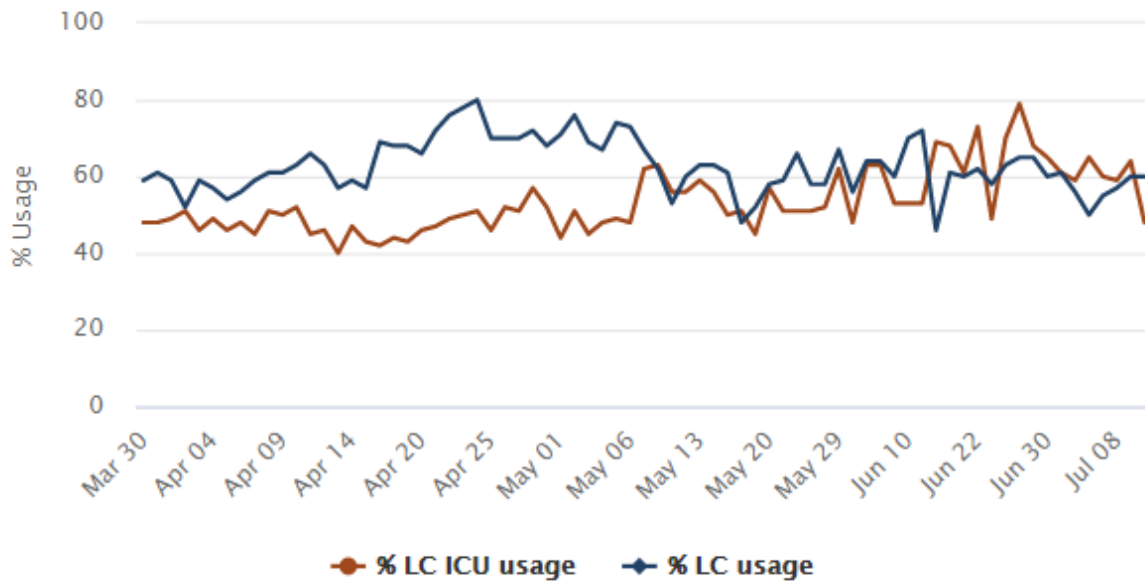


350,362 residents

\*May be lower as some may have been tested multiple times

## Hospital Utilization

### ICU & Hospital Usage % by Day



# COVID - 19 Colorado Case Summary



Data is updated daily by about 4 p.m. and includes cases reported through the previous day.

36,913 Cases	5,895 Hospitalized	61 Counties	396,363 People Tested	1,725 Deaths Among Cases	1,586 Deaths Due to COVID-19	398 Outbreaks
--------------	--------------------	-------------	-----------------------	--------------------------	------------------------------	---------------

\*

## Colorado Case Counts by County

Adams	4,757	Kit Carson	36
Alamosa	204	La Plata	136
Arapahoe	5,647	Lake	54
Archuleta	12	Larimer	917
Baca	14	Las Animas	10
Bent	4	Lincoln	4
Boulder	1,517	Logan	641
Broomfield	341	Mesa	142
Chaffee	116	Mineral	17
Cheyenne	5	Moffat	15
Clear Creek	21	Montezuma	80
Conejos	18	Montrose	218
Costilla	22	Morgan	656
Crowley	71	Otero	23
Custer	3	Ouray	12
Delta	84	Park	33
Denver	7,902	Phillips	16
Dolores	0	Pitkin	132
Douglas	1,161	Prowers	36
Eagle	763	Pueblo	432
El Paso	3,059	Rio Blanco	6
Elbert	62	Rio Grande	81
Fremont	43	Routt	82
Garfield	415	Saguache	103
Gilpin	8	San Juan	2
Grand	28	San Miguel	49
Gunnison	192	Sedgwick	0
Hinsdale	3	Summit	293
Huerfano	4	Teller	61
Jackson	7	Washington	46
Jefferson	3,026	Weld	2,999
Kiowa	0	Yuma	54
International	18		
<b>Total Cases</b>	<b>36,913</b>		

## COVID-19 in Colorado by Age Group

	Cases	Deaths	CO
0-9	2.73%	0.00%	11.85%
10-19	6.13%	0.17%	13.11%
20-29	19.44%	0.58%	14.61%
30-39	17.55%	0.70%	14.56%
40-49	16.38%	2.72%	13.04%
50-59	14.96%	6.43%	12.67%
60-69	10.08%	12.81%	10.91%
70-79	6.22%	23.36%	6.12%
80+	6.39%	53.22%	3.13%
Unknown	0.11%	0.00%	0.00%

\*

## COVID-19 in Colorado by Race & Ethnicity

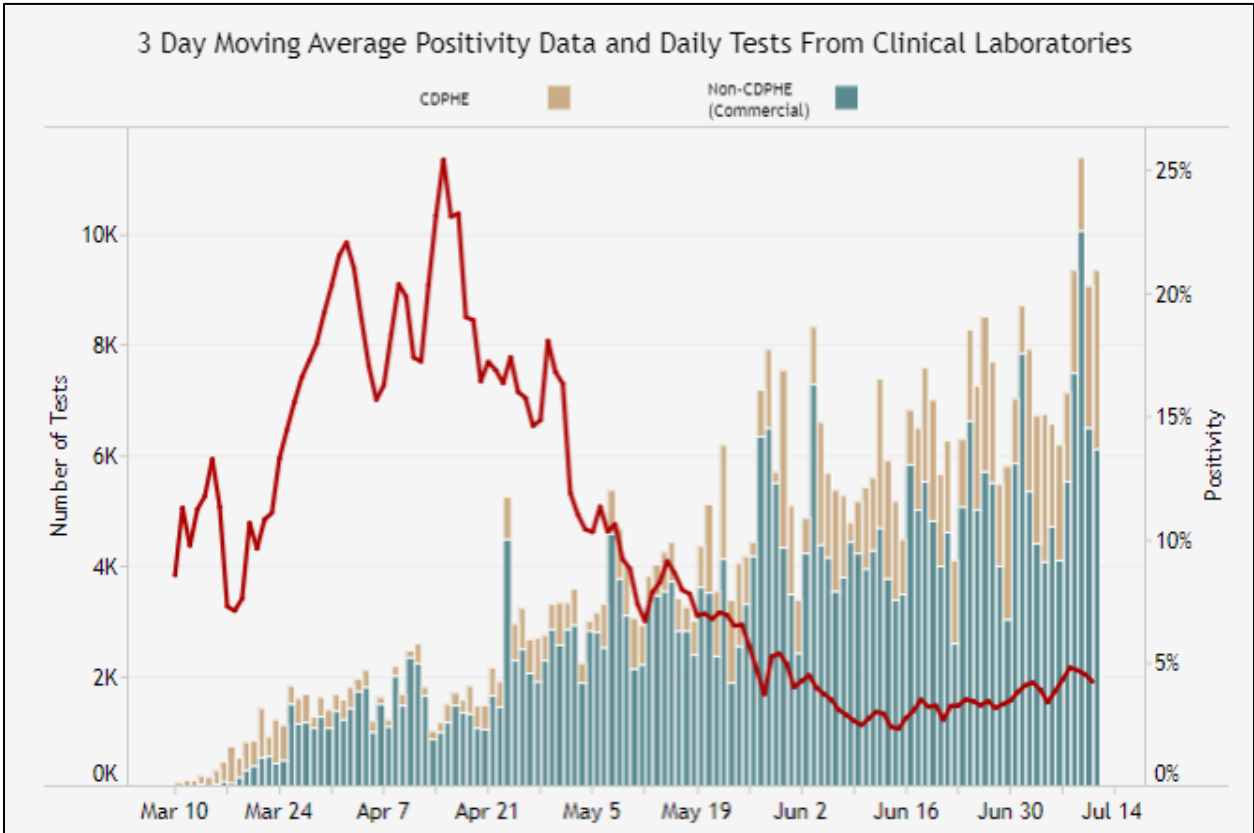
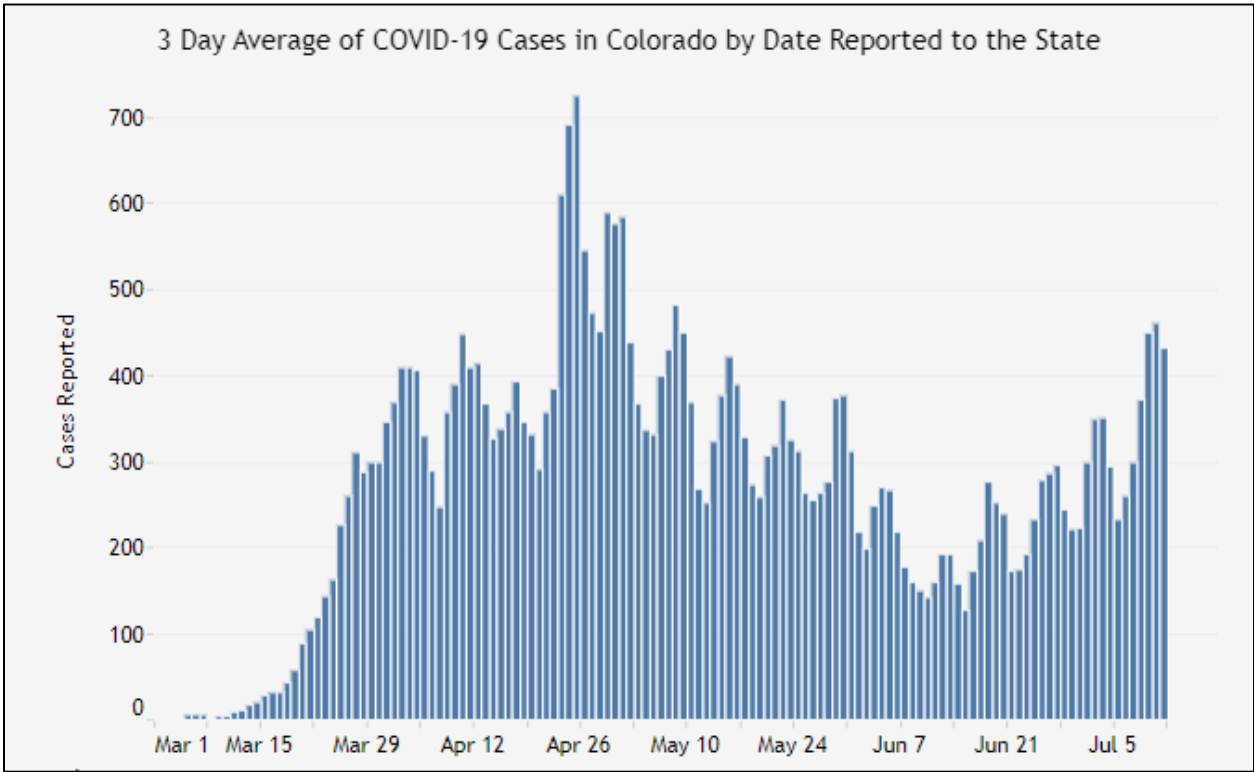
	Cases	Deaths	CO
American Indian or Alaska Native	0.54%	0.52%	0.56%
Asian	2.31%	3.36%	3.12%
Black	5.12%	6.78%	3.92%
Hispanic, All Races	37.17%	21.68%	21.69%
Multiple - Non Hispanic	1.02%	1.22%	2.65%
Native Hawaiian or Pacific Islander	0.35%	0.35%	0.12%
White - Non Hispanic	33.62%	61.91%	67.76%
Other	0.78%	0.46%	0.19%
Unknown/Not Provided	19.09%	3.71%	

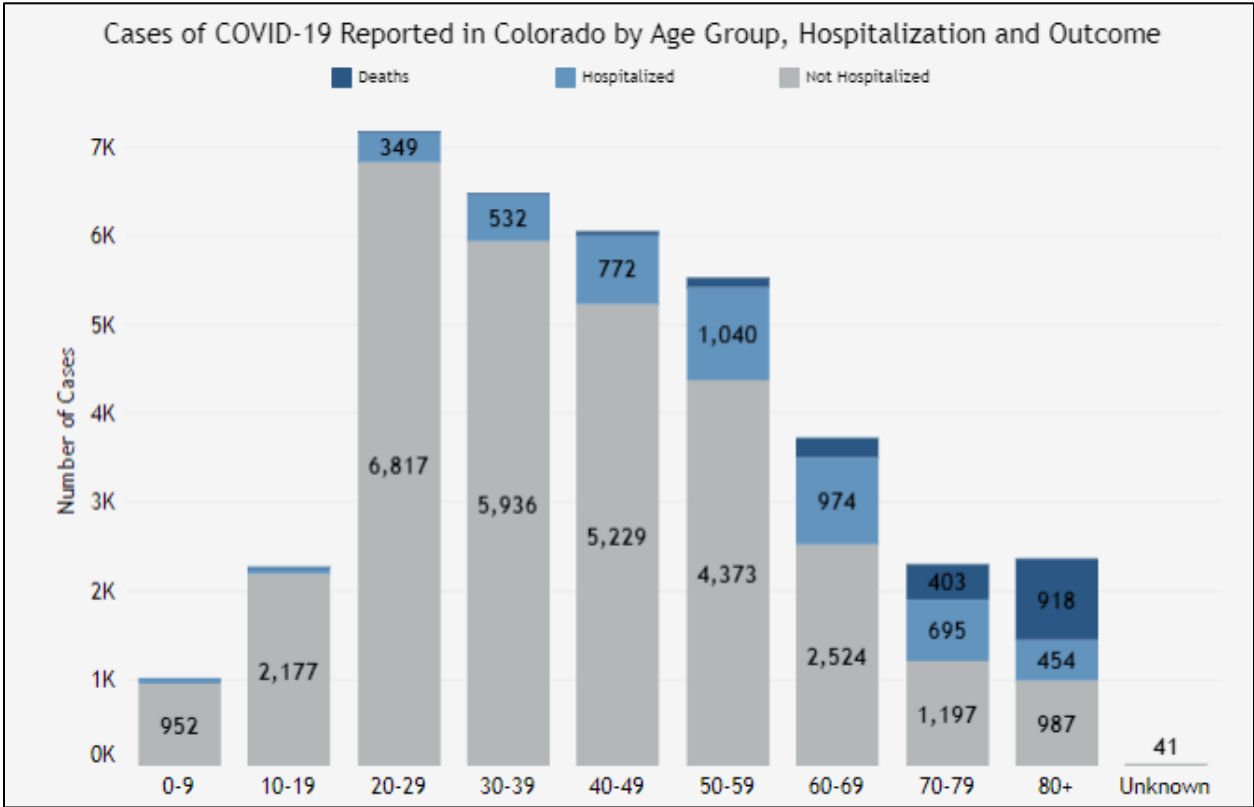
## Case Status for Cases & Deaths

	Cases	Cases (%)	Deaths	Deaths (%)
Confirmed	33,911	91.87%	1,398	81.04%
Probable	3,002	8.13%	327	18.96%
Unknown	0	0.00%	0	0.00%
<b>Total</b>	<b>36,913</b>		<b>1,725</b>	

## COVID-19 in Colorado by Sex

	Cases	Deaths
Female	49.55%	45.10%
Male	47.53%	54.55%
Unknown	2.92%	0.35%





**END OF REPORT**