

## LARIMER COUNTY | OFFICE OF EMERGENCY MANAGEMENT

P.O. Box 1190, Fort Collins, Colorado 80522-1190, 970.498.7010, Larimer.org

### **LARIMER COUNTY EMERGENCY OPERATIONS CENTER SITUATION REPORT**

This report is intended to provide information and status in quickly evolving situations and is subject to change.  
**This report can be shared publicly.**

#### **INCIDENT INFORMATION:**

**REPORT SUBMITTED BY:** Lori R. Hodges, Larimer EOC Manager

**REPORT DATE/TIME:** 06/26/2020 1400 MST

**INCIDENT NAME:** Larimer County COVID-19 Response

**INCIDENT START DATE/TIME:** 03/09/2020 11:00MST

**INCIDENT LOCATION:** Larimer County

**LARIMER OEM OR EOC POC NAME/CONTACT INFO:**

Lori Hodges, OEM  
(303) 656-3214 [mobile]  
hodgeslr@co.larimer.co.us

---

#### **CURRENT SITUATION:**

**DESCRIPTION:** The Larimer County Emergency Operations Center (EOC) has been activated for 111 days and continues to respond to the effects of the Novel Coronavirus 2019 (COVID-19) pandemic.

**New Dashboard:** Larimer County has created a dashboard to track and visualize COVID-19 status within our community to better help the public gauge the success of our efforts. This dashboard can be found at: <https://www.larimer.org/health/communicable-disease/coronavirus-covid-19/larimer-county-positive-covid-19-numbers>

**Public Health Operations:** There are currently 705 confirmed and probable cases and 251 suspect cases in Larimer County with 29 deaths reported. The Case Contact and Monitoring Group continues to issue isolation and quarantine orders as required to limit the spread of the virus. The county has reported that we are starting to see an increase in the cases within the younger demographic (those <35 years old). The Compliance Team was able to conduct 34 educational site visits this week. The Outbreak Team is currently working with 4 facilities that have confirmed or suspected outbreaks as defined by CDPHE and providing guidance to 26 other facilities.



Testing: Over 300 people were registered for testing on Friday in Fort Collins, with people already in line by 8am. There has continued to be a significant increase in people registering for testing, not just walk-ins. On average, there are about 40-50 walk-ins per testing day. Although we have seen an increase in people seeking testing, the positivity rate of the tests remains within reasonable limits (the percentage of positive test results to the total number tested). Those who wish to register for testing can go to: [larimer.org/community-testing](http://larimer.org/community-testing).

Expanded antibody testing is now available through UHealth. To see locations and schedule a test: <https://www.uhealth.org/services/infectious-diseases/coronavirus-covid-19/antibody-testing/>  
It is important to note that people should not change their behavior in any way should they have antibodies; continuing to follow physical distancing, wash their hands frequently, and stay home if they develop symptoms of COVID-19, regardless of whether they have antibodies to COVID-19 or a negative nasal swab test.

Supply Chain: Larimer OEM urges all partners and businesses to begin ordering PPE supplies now, if they haven't already, in anticipation of fall and winter needs. Even though the supply chain has gotten better over time, there is still a backlog of orders leading to delays of up to 6 weeks to 2 months. The ability for Larimer to secure future supplies from the State/SNS remains unknown at this time.

Public Information: The Larimer Health website is currently getting revamped with new guidance from the CDC. Businesses and people wishing to hold events should review the website regularly for updates.

Recovery: A Recovery Collaborative has formed to work to address recovery needs across multiple sectors. The recovery from this event will be long and will impact almost every person in the county in some way or another. Meetings are occurring multiple times each week in different focus areas, and they involve city/county partners, non-governmental partners, non-profits and volunteer organizations. The initial priority is developing a fundamental understanding of immediate impacts, with the deadline to have those recorded within the next 30 days. For those who are interested in being involved in the Recovery Collaborative, please contact Laura Levy at [laura@larimerrecovers.com](mailto:laura@larimerrecovers.com).

---


**Risk Score: Medium**



Risk Index




Larimer County has flattened the curve, but the curve doesn't go away. We must stay diligent in our social distancing, handwashing and face coverings to keep our community safe.

 **New COVID Cases** (updated


06/27/2020)



 **COVID patients in hospital**

(updated 06/26/2020)




 **Days in past 14 with >25 new cases**



 **% Hospital Utilization**

(updated 06/26/2020)



 **Days in past 14 with >10% positive tests**

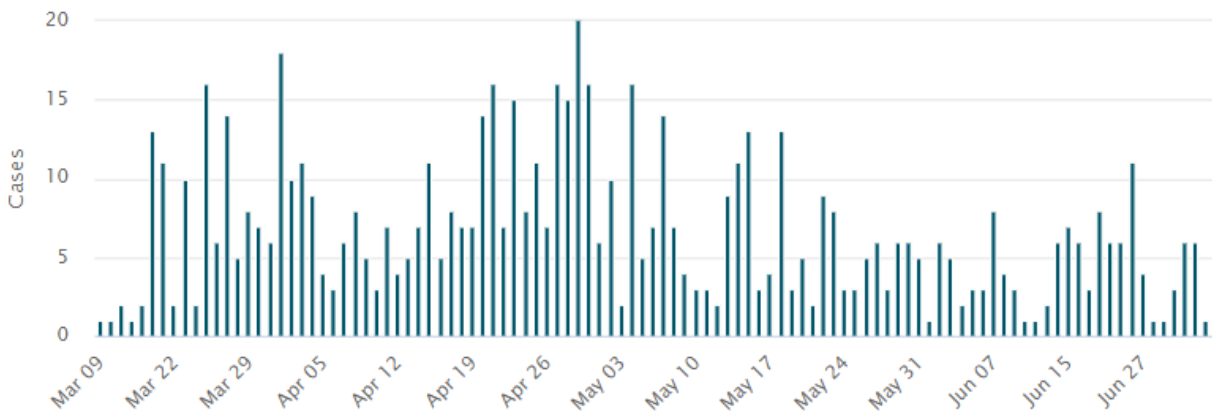


 **% ICU Utilization** (updated

06/26/2020)

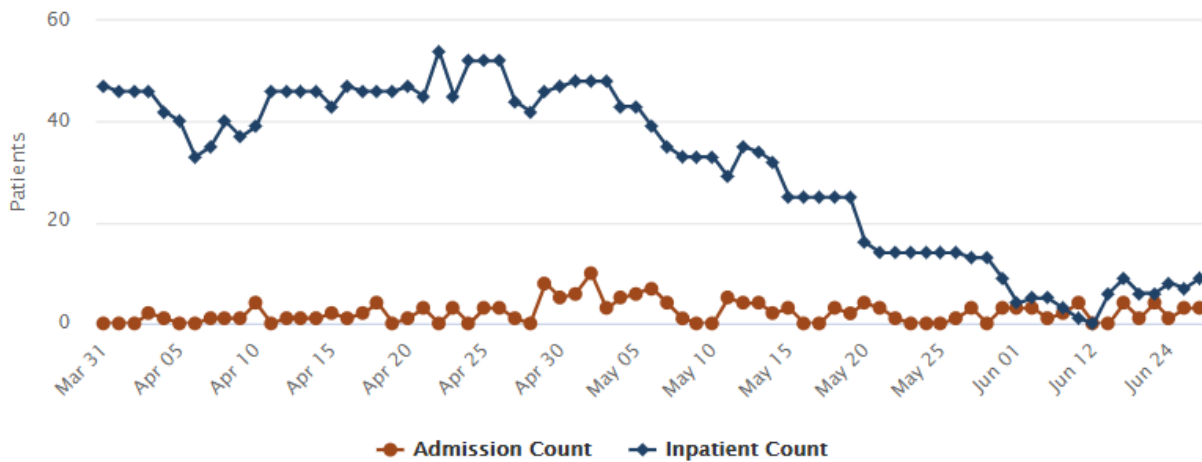


## Cases by Day



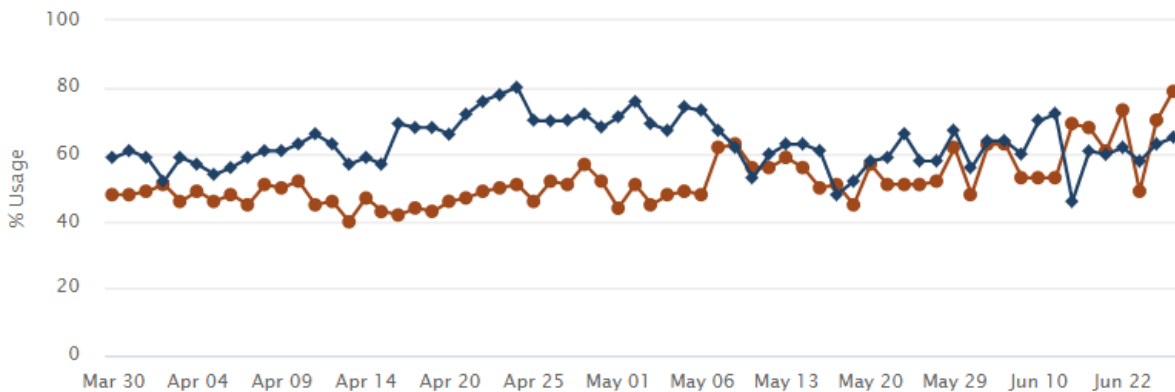
# COVID Hospital Patients

## Admission & Inpatient by Day



# Larimer County Hospital Usage

## ICU & Hospital Usage % by Day



# COVID - 19 Colorado Case Summary



Data is updated daily by about 4 p.m. and includes cases reported through the previous day.

32,022 Cases	5,399 Hospitalized	61 Counties	310,883 People Tested	1,674 Deaths Among Cases	1,482 Deaths Due to COVID-19	350 Outbreaks
-----------------	-----------------------	----------------	-----------------------------	--------------------------------	------------------------------------	------------------

\*

## Colorado Case Counts by County

Adams	4,093	Kit Carson	31
Alamosa	184	La Plata	94
Arapahoe	5,127	Lake	50
Archuleta	8	Larimer	713
Baca	13	Las Animas	7
Bent	4	Lincoln	4
Boulder	1,347	Logan	636
Broomfield	291	Mesa	89
Chaffee	77	Mineral	5
Cheyenne	5	Moffat	10
Clear Creek	18	Montezuma	70
Conejos	13	Montrose	203
Costilla	20	Morgan	651
Crowley	70	Otero	22
Custer	2	Ouray	10
Delta	82	Park	27
Denver	6,947	Phillips	15
Dolores	0	Pitkin	92
Douglas	922	Prowers	18
Eagle	685	Pueblo	378
El Paso	2,296	Rio Blanco	3
Elbert	56	Rio Grande	73
Fremont	34	Routt	71
Garfield	266	Saguache	100
Gilpin	7	San Juan	1
Grand	18	San Miguel	35
Gunnison	186	Sedgwick	0
Hinsdale	3	Summit	267
Huerfano	4	Teller	41
Jackson	1	Washington	44
Jefferson	2,633	Weld	2,783
Kiowa	0	Yuma	51
International	16		
<b>Total Cases</b>	<b>32,022</b>		

## COVID-19 in Colorado by Age Group

	Cases	Deaths	CO
0-9	2.51%	0.00%	11.85%
10-19	5.44%	0.18%	13.11%
20-29	18.01%	0.54%	14.61%
30-39	17.40%	0.66%	14.56%
40-49	16.75%	2.63%	13.04%
50-59	15.41%	6.45%	12.67%
60-69	10.63%	12.72%	10.91%
70-79	6.62%	23.30%	6.12%
80+	7.10%	53.52%	3.13%
Unknown	0.12%	0.00%	0.00%

\*

## COVID-19 in Colorado by Race & Ethnicity

	Cases	Deaths	CO
American Indian or Alaska Native	0.54%	0.48%	0.56%
Asian	2.48%	3.41%	3.12%
Black	5.44%	6.51%	3.92%
Hispanic, All Races	37.95%	21.21%	21.69%
Multiple - Non Hispanic	1.01%	1.25%	2.65%
Native Hawaiian or Pacific Islander	0.39%	0.36%	0.12%
White - Non Hispanic	34.42%	62.60%	67.76%
Other	0.83%	0.42%	0.19%
Unknown/Not Provided	16.93%	3.76%	

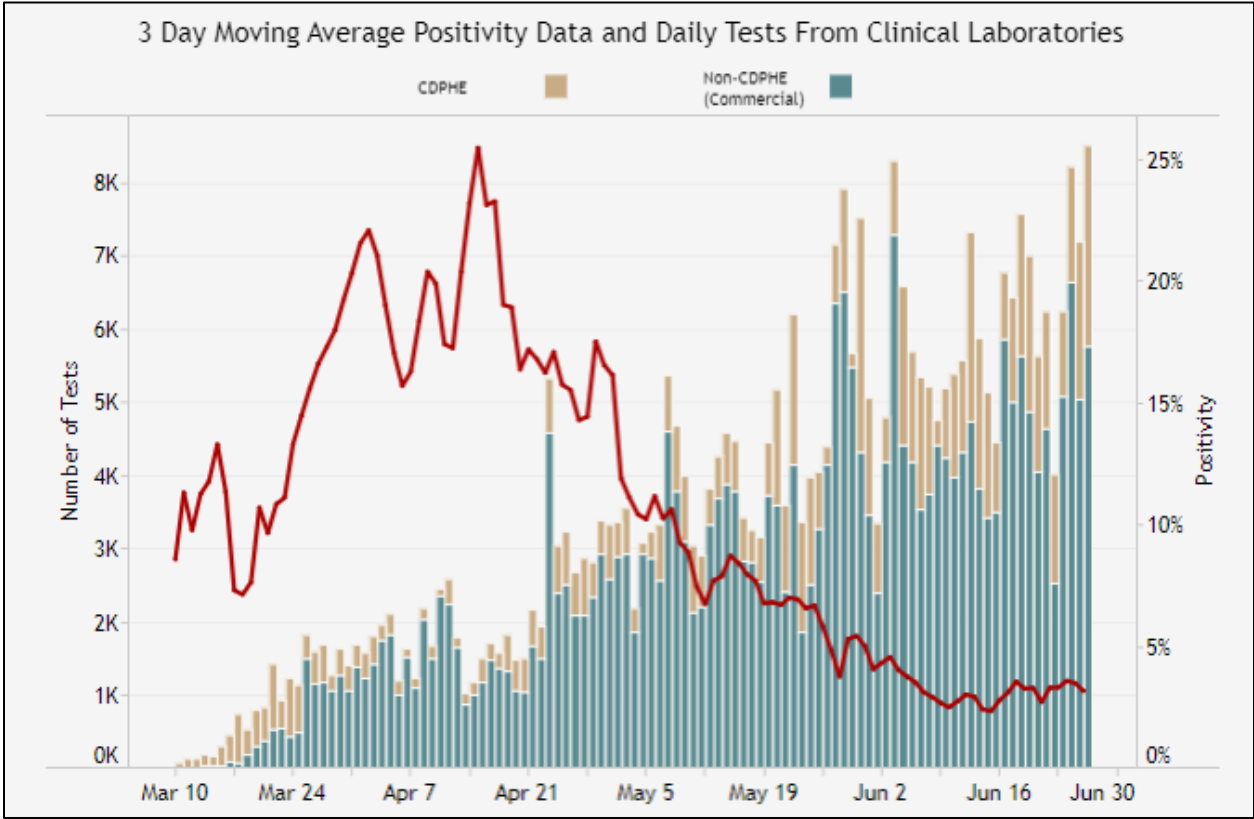
\*

## Case Status for Cases & Deaths

	Cases	Cases (%)	Deaths	Deaths (%)
Confirmed	29,194	91.17%	1,343	80.23%
Probable	2,828	8.83%	331	19.77%
Unknown	0	0.00%	0	0.00%
<b>Total</b>	<b>32,022</b>		<b>1,674</b>	

## COVID-19 in Colorado by Sex

	Cases	Deaths
Female	49.98%	44.92%
Male	47.75%	54.78%
Unknown	2.27%	0.30%



END OF REPORT