

WHAT CAN I GET HELP FOR?

- Depression
- Anxiety
- Suicidal / Homicidal Ideation
- Hallucinations
- Stress
- Bipolar Disorder
- Grief and Loss
- Traumatic Events
- Medication Stabilization
- Variety of Other Behavioral Mental Health Challenges



ADDITIONAL CRISIS SERVICES

- Mobile assessments can be dispatched within Larimer County 24/7/365
- Assessment, evaluation and crisis intervention
- Behavioral Health Urgent Care assessments between 8 a.m. and midnight are available for anyone.
- 23-hour observation beds are available when appropriate
- Please note: Psychiatric services and/or medications are not available for walk-in assessments

[SUMMITSTONEHEALTH.ORG](https://www.summitstonehealth.org)

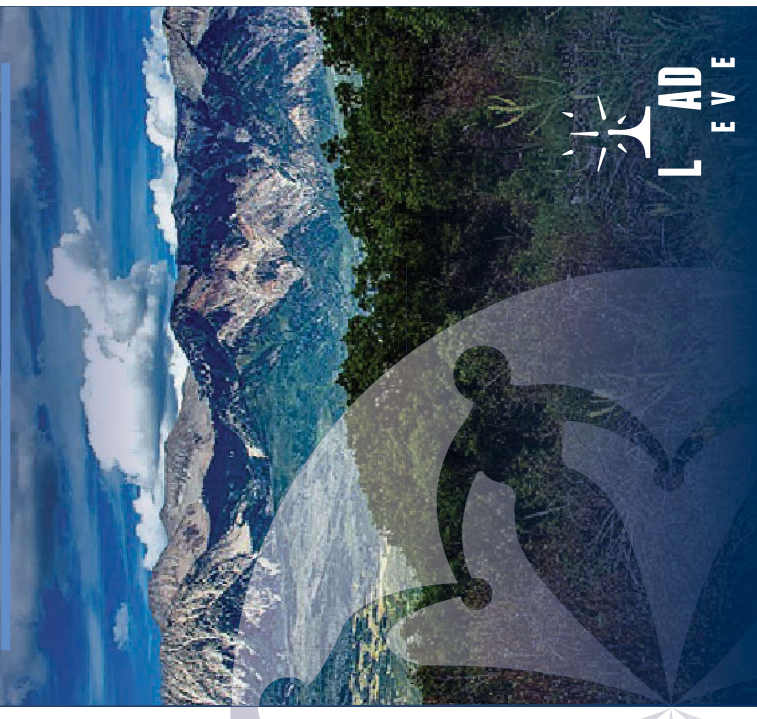
CRISIS HOTLINE

(844) 493-TALK (8255)
Text "TALK" to 38255
(970) 494-4200

1217 RIVERSIDE AVE.
FORT COLLINS, CO 80524



CRISIS STABILIZATION UNIT



WHAT IS THE CRISIS STABILIZATION UNIT?

A short-term mental health residential facility located at SummitStone's Crisis Services Unit that offers:

- An evidence-based and culturally competent therapeutic focus with daily individual and group sessions
- Personal services (essential clothing, laundry, etc.)
- Psychiatry and nursing services
- Comprehensive treatment and discharge planning

FACILITY FEATURES

- Accommodations for up to 10 residents, including room and board
- Up to 5-day stays
- Supportive oversight
- Connection to resources upon discharge



DAILY SCHEDULE INCLUDES

Breakfast, Lunch, Dinner and Snacks
Medication Administration
Psychiatric Evaluation
Individual Therapy as Needed
Goals Group
Activity Group
Therapy Group
Visiting Hours

WHO CAN BENEFIT?

- Individuals in a self-defined behavioral health crisis whose needs cannot be safely accommodated in a less restrictive environment
- Individuals who are on a 72-hour mental health hold
- Individuals not at risk of elopement, violence, alcohol or substance withdrawal, or with substantial medical concerns