

# Regional Impacts to Glade Reservoir:

## Associated Press Investigation: In Colorado, 24 high-hazard dams are seen as problematic

By MATT VOLZ November 10, 2019

*“With Colorado’s growing population, more people moving into downstream communities will be exposed to potential dam failure...”*

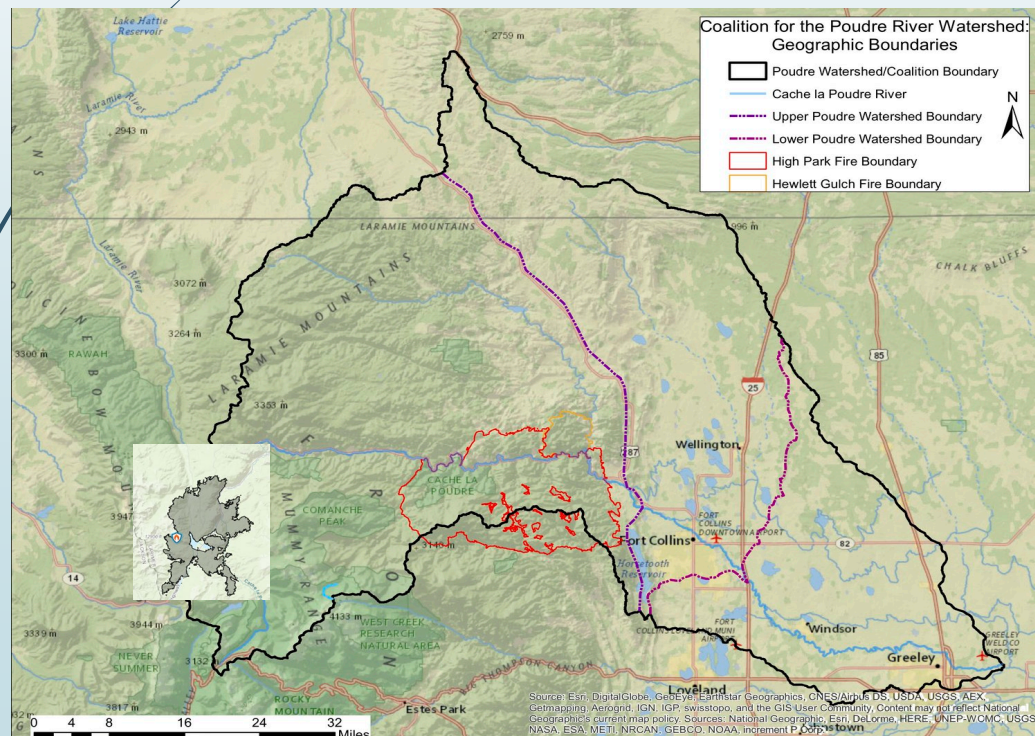
*“Two dozen aging dams in Colorado were in unsatisfactory condition and are located in places where their failure would likely kill at least one person, according to an Associated Press investigation;”*

*“There are 54 high-hazard dams in Larimer County, but none were listed in unsatisfactory condition as of 2018, according to the AP investigation.”*

*(-emphasis and underscore added)*

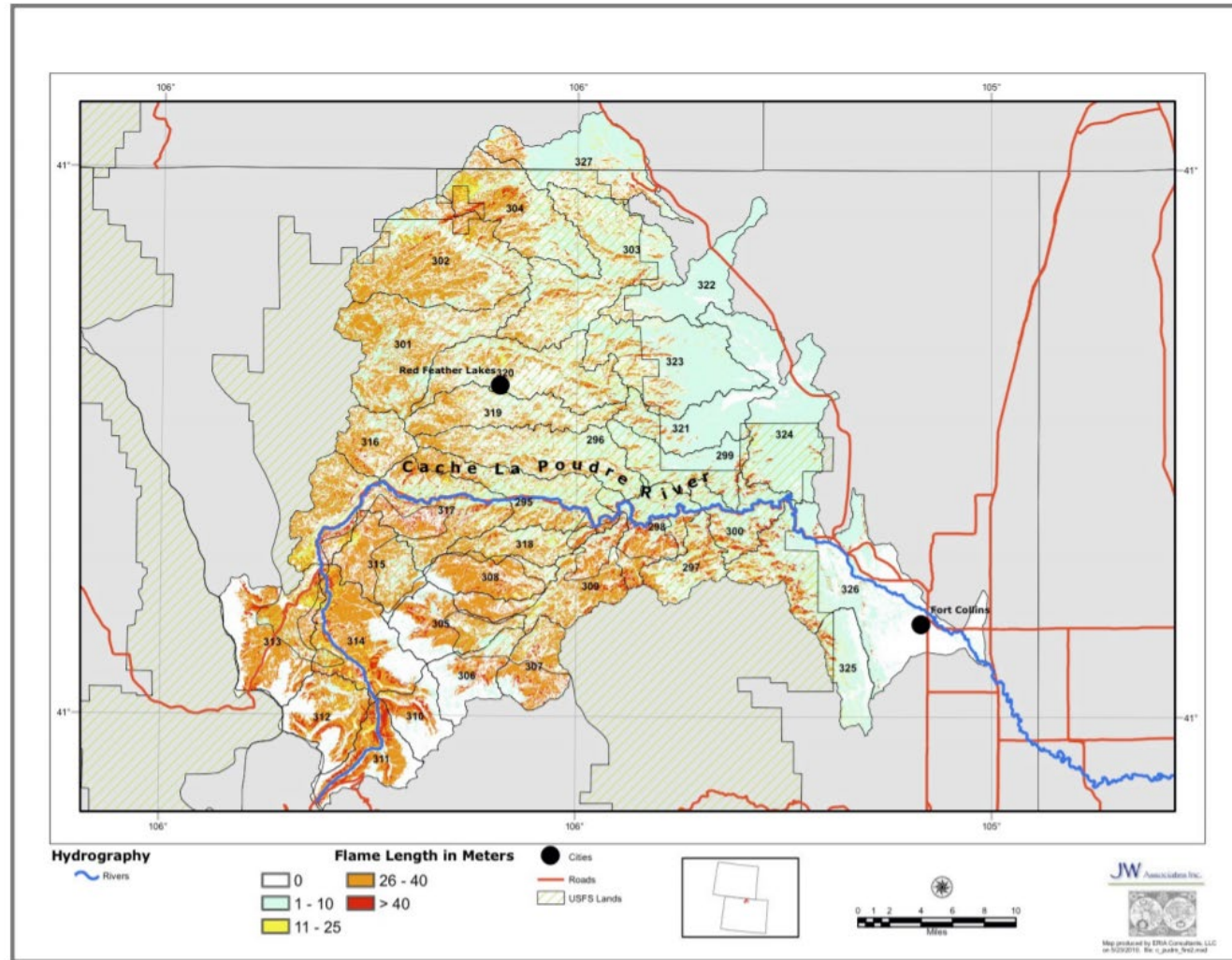
# New and Ongoing Wildfire Impacts to the Poudre River Watershed

- ▶ Cameron Peak Fire: 23,007 acres (August 30) , High Park: 87,284, Hewlett Gulch: 7, 685. Wildfire is one of the biggest threats to Poudre River water quality. Severe & widespread fire will change stream flow.

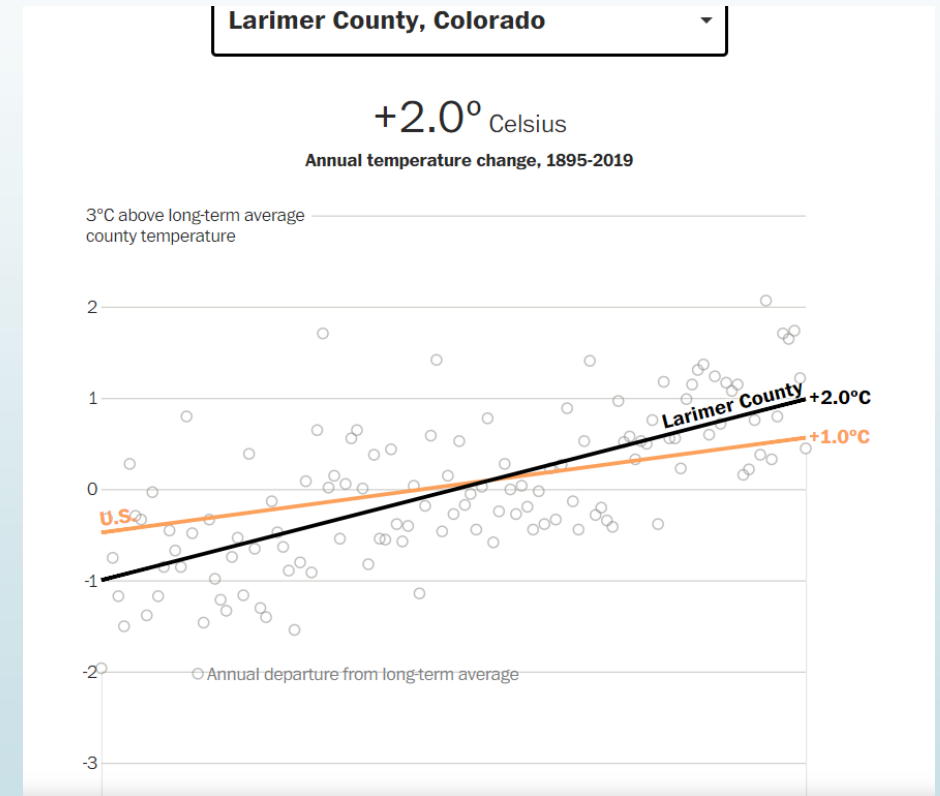
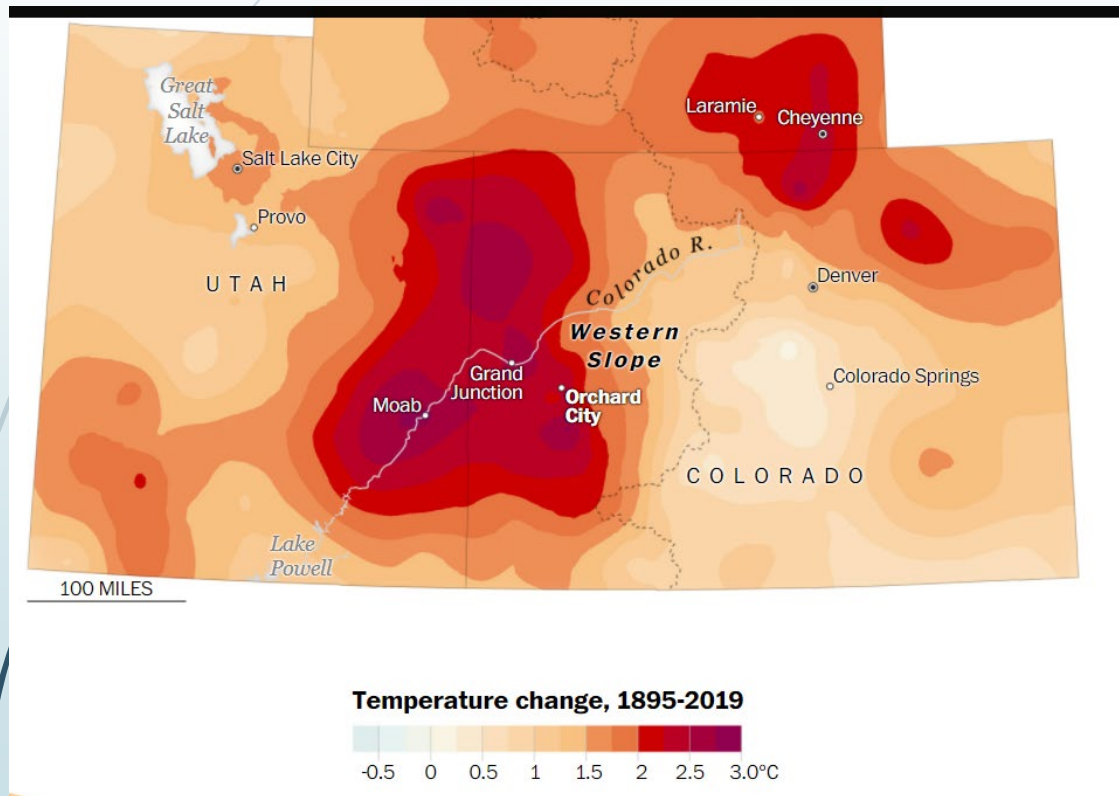


# Wildfire Hazard Ratings 2010:


Figure 2. Cache la Poudre Watershed Wildfire Hazard Modeling Results



# Larimer County & Western Colorado experiencing faster warming than surrounding areas



Spanning more than 30,000 square miles, it is the largest 2C hot spot in the Lower 48 (*Washington Post and Science Daily, NOAA data, 8/19/2020*)



*Glade Reservoir will be impacted by factors far beyond the current site, creating conditions beyond our resources and control, plus numerous deficiencies in the 1041 application:*

- Not enough water to fill, reduced available water in the future*
- Geological risks*
- Ongoing wildfire impacts and rising temperatures*
- New methods and alternatives for water storage and distribution.*