

## POLICY COUNCIL NOTES

### LARIMER COUNTY POLICY ADVISORY COUNCIL

**Date:** February 13, 2020  
**Time:** 10:00-12:00pm  
**Location:** Commissioner's Conference Room 2<sup>nd</sup> floor  
200 West Oak Street, Fort Collins, CO 80521  
**Contact:** Stephen Gillette, Director of Solid Waste

**Attendees:**

Dave Clark, Steve Johnson, John Kafalas, Ken Zorne, Howard Lauren, Kevin McEachern, Tim Whitehouse, Carolyn Mitchell, Cody Bird, Jim Gerek?, Laine Connolly, Matt Gallegos, Mick Mercer, Wade Troxell, Leah Johnson, Laurie Kadrich, Ross Cunniff, Stephen Gillette, Josh Fudge, Jeff Jensen, Lou Perez, Dave Clark Smith, Rachael Jabbari Intern,

**Notes from January 6, 2019 approved**

**Additions or deletions to the agenda:**

- Laurie Kadrich:  
Technical Advisory Committee met, agreeing to improve clarity and purpose/direction, and then connect work to the IGA or Mission Vision and Values for our meetings.
- Leah Johnson:  
Everyone on the Policy Committee should have and review the SWIMP <https://www.larimer.org/solidwaste/wasteshed> overall Master Plan for reference prior to next meeting.
- Steve Johnson:  
Add 15-minute slot on next agenda for a summary of SWIMP high points; how the triple bottom line analysis was done, Tier structure etc.

## **Old Business –**

### **task assignments were distributed among Technical Committee members**

- Transfer truck routes – Caroline Mitchell, Cody Bird, Laurie Kadrich  
A sub committee was formed. Martina Wilkinson, City of Ft Collins Engineering, Mark Peterson, Larimer County Engineering, hired Consultant, and members from the Technical Advisory Committee. They will be doing an analysis of the potential routes. We will follow up as soon as the consultant returns their findings. We do not have an ETA.
- Mission, Vision, Values and Outcomes- Susie Gordon, Mick Mercer (*insertion below*)  
There was a proposal to develop a Mission, Vision, Values and Outcomes model, we want to remind all that the Wasteshed Coalition 3.5 years ago, created a Charter, Goals and Objectives statement that was very specific. 4 Goals were established with more detailed objective under each. Mick Handouts for review insertion below. We would like direction from the Policy Committee. The original charter can be blended into a different model.

#### **Suggestions**

- To see an analysis of how we are sticking to the timelines in the handouts and perhaps adjusting where needed
- Form an ad-hoc subcommittee of the Policy Council, and develop this as a way to help inform the council, they would come to next meeting with a recommendation on Mission, Vision, Values as a starter built from these documents
- The subcommittee should consist of seasoned members and new members, to make sure there is balance.

#### **Q:**

- What are the “social things” in the triple bottom line analysis?

#### **A:**

- Concrete examples of what fits in each category are in old presentation that Mick will share at the next meeting.
- Social can mean traffic flow, impacts on neighborhoods, social demographics, the expectations of the community, and goals for the future. And how people respond to different policies that are in place on topics that get us to diversion.

#### **Motion passes for forming a subcommittee**

2/10/2020

## Wasteshed Coalition: Charter, Goals, Objectives (approved previously)

versus

## Solid Waste Policy Council: Vision, Mission, Values, Outcomes (new???)

February 13, 2020

## Supporting Factors for all Goals

- Not one element (economics, environment or social) can be maximized; need to balance among the three to achieve a realistic diversion goal
- Everyone has a voice and treated fairly (stakeholders, private sector and public)
- Diversion goals and policy need to be supported by the PAC and enacted consistently across all local agencies
- Equal opportunity for resource recovery, compared to a landfill
- Consistent policy, effective two-way communications and an inventory and assessment of current infrastructure and resources



## Coalition Charter

*As stewards of the public trust, the charter and charge of the North Front Range Regional Wasteshed Coalition is to responsibly address current solid waste management and resource recovery needs of the region, while considering infrastructure and policy that will meet community needs in the future.*

*\*Stakeholder group reviewed the charter and goals on May 31, 2017.*



## 4 Goals

- Establish a comprehensive, regional solid waste management system that is implemented in an economically, environmentally and socially sustainable manner.
- Provide a system and facilities that reflect the future needs and desires of its users based on comprehensive materials management and disposal.
- Develop unified diversion goals that are adopted and implemented by all municipalities in the Wasteshed and emphasizes a solid waste system focused on diversion and supported by shared and consistent data.
- Develop a strong public education and outreach program that is unified and consistent across all municipalities.

## Goal #1

*Establish a comprehensive, regional solid waste management system that is implemented in an economically, environmentally and socially sustainable manner.*

### Objectives

- Upon completion of the Phase 1 Study in 2018, the Coalition has identified and documented specific solid waste programs, facilities and infrastructure that deliver the optimum balance between economic, environmental and social costs.
- The proposed solid waste system addresses future consumer service demands in the region over the next 40 years or more, and provides long-term funding to address capital and operating costs.
- Coalition members are prepared to begin implementing solid waste programs and constructing solid waste facilities and infrastructure by January 2020.

## Goal #3

*Develop unified diversion goals that are adopted and implemented by all municipalities in the Wasteshed and emphasizes a solid waste system focused on diversion and supported by shared and consistent data.*

### Objectives

- The Coalition establishes consistent definitions and methods for measuring the rate of solid waste diversion within the wasteshed by the year 2018.
- Solid waste diversion is evaluated on a two-year recurring cycle beginning in the year 2020.
- A Policy Advisory Committee and private solid waste representatives review the results of solid waste diversion, current diversion programs and unified diversion goals as an annual basis to identify potential program adjustments.
- Municipalities adopt and implement consistent regulatory measures to support solid waste diversion efforts by the year 2022.

## Goal #2

*Provide a system and facilities that reflect the future needs and desires of its users based on comprehensive materials management and disposal.*

### Objectives

- The development of solid waste programs and facilities shall utilize a comprehensive approach (for materials management, reuse, recycling and disposal) examining how materials are used throughout their life cycle and finding opportunities to promote reduction of material consumption, environmental impacts, costs, and conserve resources.
- The next generation of solid waste programs and facilities provides solid waste management services at affordable costs and consistent rates and capacities, compared to national and regional averages.
- New solid waste programs and facilities result in the increasing application of innovative technologies and produce a substantial reduction in the amount of material being transferred to landfills.
- New solid waste programs and facilities are convenient and accessible for citizens, customers and private solid waste haulers in the County and region.

## Goal #4

*Develop a strong public education and outreach program that is unified and consistent across all municipalities.*

### Objectives

- Public education and outreach programs convey a consistent message and effectively influence the behavior of citizens regarding the reduction, reuse and recycling of materials that would otherwise be destined for landfill disposal.
- Educational activities support a vision for community and environmental benefits of reducing, reusing and recycling materials.
- Public education materials convey consistent guidelines for recycling and solid waste diversion within all municipalities.
- Municipal and private solid waste compare representatives meet on a routine basis to coordinate solid waste educational programs and outreach efforts.

**North Front Range Regional Wasteshed Coalition**  
**January 23, 2020**  
**Mission/Values Statement – Review & Analysis**

**Background**

A Policy Advisory Committee (PAC) for the Wasteshed project was formed in 2016 and met quarterly to develop a Strategic Waste Infrastructure Master Plan (<https://www.larimer.org/solidwaste/wasteshed>), that was adopted by Larimer County Board of Commissioners in December 2018.

A reconstituted Policy Committee (PC) was established in 2019 that includes the Town of Wellington. With a kickoff meeting in October and a half-day retreat in December, the group asked to revisit the original charter and consider the need for articulating changes that may have arisen.

Existing Charter	Possible changes as "Mission or Vision"
As stewards of the public trust, the charter and charge of the North Front Range Regional Wasteshed Coalition is to responsibly address current solid waste management and resource recovery needs of the region, while considering infrastructure and policy that will meet community needs in the future.	
<b>Goals and Objectives</b>	
<p><b>1. Establish regional materials management system</b></p> <p>Upon completion of the Phase 2 Planning Study in 2018, the Coalition has identified and documented specific options for programs and facilities, taking into consideration the balance between economic, environmental and social costs and benefits.</p> <p>The proposed solid waste system addresses future customer service demands in the region over the next 40 years or more and provides long-term funding to address capital and operating costs.</p> <p>Coalition members are prepared to begin implementing programs and constructing facilities by January 2020.</p>	
<p><b>2. Implement programs and facilities</b></p> <p>The development of programs and facilities shall take a comprehensive, systems-based approach for materials management to conserve resources, manage costs, and minimize environmental impacts.</p>	
<p>The next generation of materials management programs and facilities provides services at competitive rates that are in alignment with the solid waste industry in the U.S.</p> <p>New programs and facilities result in the increasing application of proven, innovative technologies for reuse, recycling, and disposal to substantially reduce the amount of material being landfilled.</p> <p>New programs and facilities are convenient and accessible for citizens, customers, businesses, and waste haulers in the Wasteshed.</p>	
<p><b>3. Develop waste diversion/reduction goals for all jurisdictions</b></p> <p>The Coalition establishes consistent definitions and methods for measuring solid waste diversion/reduction within the Wasteshed by the year 2019 that are supported by streamlined and consistent data.</p> <p>Solid waste diversion/reduction measurements will be evaluated on a 3-year recurring cycle beginning in 2020 jurisdictions in the Wasteshed, to identify potential program adjustments.</p> <p>Jurisdictions implement policy and regulatory measures to support waste reduction, reuse and recycling efforts, by the year 2024.</p>	
<p><b>4. Conduct strong, consistent public education and outreach</b></p> <p>Public education and outreach programs convey a clear, consistent message and effectively influence the behavior of citizens regarding the reduction, reuse and recycling of materials that would otherwise be destined for disposal.</p> <p>Public education materials convey shared guidelines for recycling and other information on reuse and reduction within all jurisdictions.</p> <p>Municipal and solid waste representatives meet on a routine basis to coordinate solid waste educational programs and outreach efforts and to resolve any questions about recycling guidelines.</p>	

- SWOT (Strengths, Weaknesses, Opportunities, Threats) category revisions from December Retreat- Stephen Gillette SWOT (handout insertion below)  
Comments that were in the parking lot were moved into categories. Please send edits to Stephen Gillette, they can be adjusted as we go.

**Suggestion:**

- We could build from this document into a visioning process.
- This will be assigned and integrated to the same subcommittee to facilitate the goal of less meetings

**LARIMER COUNTY | FACILITATION TEAM**

---

**SWPC/TAC RETREAT NOTES**

**DECEMBER 12, 2019**

**PURPOSE:** identify strategic parameters for 2020

**SWOT RESULTS: Who are we?**

➤ **Strengths**

- Wellington Involvement – opportunity to be informed/be at the table
- History of collaboration
- Experienced, knowledgeable, passionate technical staff
- Engaged Elected Officials
- Diverse representation both regionally and experience-wise on PC/TAC
- Attendance commitment
- System in place allows for thoughtful, non-reactionary, actions
- Ability to leverage personnel, funds and experience
- Opportunity to increase global concern awareness
- There is substantial Community interest
- Opportunity to meet and exceed environmental compliance regulations
- 

➤ **Weaknesses**

- Aggressive agenda
- Personalities may get in the way of roles
- Diverse representation both regionally and experience-wise on PC/TAC
- Diverse needs of urban vs. rural interface
- Potential to develop a “circular economy”

- Ability to make adjustments/be flexible in light of the IGA [this doesn't sound like a weakness – does it need to be re-framed?]

➤ Opportunities

- PC members can be ambassadors to educate residents
- Orientation of new members
- Possibility to add other entities/jurisdictions
- Each agency brings unique roles, services, experience and needs
- Continued leadership to create a state-wide model of cooperation in solid waste planning
- \$40 M on hand
- Should there be a “Hauler Representative” on the PC or the TAC or form a subcommittee?
- Opportunity to take advantage of CSU expertise
- Excellent Foresight on County's behalf
- 

➤ Threats:

- Strong voices (egos) dominating the conversation and not letting all “voices” to be heard
- Vested interests may try to create “fake news”
- Complex issues with no simple solutions
- PC exceeding its authority
- Intermittent/patchy attendance at PC meetings
- Initial negative reaction to the project in the Wellington area
- Subject to market trends
- 

➤ Other thoughts not necessarily group related

## IGA IMPLEMENTATION: When will topics be reviewed by the PC?

- Q1 =       Hauler Licensing  
              Transfer Station  
              New Landfill
  - Q2 =       Yard Waste  
              Administration Functions  
              Education
  - Q3 =       Construction & Debris
  - Q4 =       Food Waste
- 
- There was discussion that portions of the education and admin functions topics may need to be on-going and looked at during each meeting. Admin functions were defined as: IGA changes/review, determine who serves on TAC, review of Tier 2 and 3 projects, etc.
  - One project that may not have been listed is the on-going need for discussion around what to do with existing landfill and what needs to be done to cease operations at that location. This is outside of the scope of the IGA, but could impact IGA projects.
  - It was agreed to keep the *monthly* meeting schedule, especially for 2020 when much needs to be done. The Chair will set the agenda in accordance with the priorities established by quarter. Next meeting is January 9, 2020 at 10:00 a.m. in the Hearing Room on the first floor.

## PARKING LOT THOUGHTS

- Is there a need/desire to invite other communities? Berthoud has already expressed an interest. The group was open to including other members as needed.
- Does the IGA need to be amended to allow more flexibility regarding dates? What would that look like moving forward? For instance, Hauler Licensing has a 1-1-2020 deadline which cannot be met.



- TAC can determine when a policy decision needs to be made vs. an on-going FYI.
- An outline of critical dates would be beneficial.
- Important to get Haulers on-board early so they don't come in at last minute with concerns/questions. Suggestions included a survey, subcommittee or focus group in lieu of membership on the PC.
- Perhaps field trips would be beneficial for new members. Thoughts on how/when need to be developed given limited staff resources.

- Develop a public engagement strategy including a “toolkit” for education- Caroline Mitchell. The County is in the process of hiring a Communications person. There are a couple different areas that the toolbox could go. (handout insertion below)

- We can focus on consistent education around recycling and the programs that we currently have available on curbside recycling, drop off centers, combined social media, etc. (insert below)
- We can develop this in collaboration with our local communities ensuring the message around the Wasteshed project is applicable and consistent throughout the region. This hasn't been updated since the IGA adoption and Wellington needs to be added. We have existing material, like curbside guidelines. We will consider this effort a work in progress

**Q:**

- Are there timelines associated with this?
- How are the flyers getting into the consumers hands?
- Are we adapting this messaging based on the target audience so its relevant to all communities? Different demographics are different audiences. .

**Suggestions:**

- Part of the education strategy is to leverage partners. Hauling partners, and CSU so we have consistency of messaging
- The who, the where, the how is important to communicate to the communities about the Wasteshed project
- Education is both highlighting and celebrating the good behaviors and educating the bad behaviors to decrease the amounts going into the landfill
- Different centers have different ways of separating materials, so they will each have their own unique rules of how best to separate those materials, so an important point for the flyer would be to clarify “Curbside”
- There will be variations with each community in part because we all have different haulers so trying to keep it a broader and simpler message,
- This could be used as a template and modify it to the situation, so it has the same look and feel but has been modified for your community.



# RECYCLE

## PLEASE

keep this guide handy, near your recycle bin or on your refrigerator.

### ALL IN ONE BIN



If you live in an apartment, check with your property manager about recycle bins near you. All recyclable materials listed on the reverse side can be **recycled together** in these recycle bins.

### SIZE MATTERS



If you live in a house, your trash bill is based on the size of your trash cart. If you don't regularly use all the capacity of your trash cart, call your trash hauler to request a smaller cart. You'll save money. The smaller your trash cart, the smaller your trash bill.

**Did you know you receive recycling at no extra cost as part of your trash service?** If you don't already have a cart to hold your recyclables, call your trash hauler and ask for a wheeled cart. Carts are usually available at no charge.

### CARDBOARD IN THE TRASH IS ILLEGAL



Remember to recycle your cardboard! A City of Fort Collins ordinance requires cardboard be reused or recycled. It is illegal to throw cardboard in the trash. **Put your flattened cardboard with your other recyclables in your recycle bin or dumpster.**

Want to share your used moving boxes or find free boxes? Learn more about cardboard recycling and exchanging at [fcgov.com/cardboard](http://fcgov.com/cardboard).

### CHEMICALS AND E-WASTE ARE ALSO ILLEGAL

In Colorado, it is **illegal** to place TVs, computers, and other electronics in the trash. Find out why electronics are so harmful and how to safely recycle these items at [fcgov.com/recycle](http://fcgov.com/recycle).

It's also illegal to dispose of household hazardous waste in the trash. This includes paint, batteries, fluorescent light bulbs, oil, pesticides, and chemicals. In Fort Collins, free collection events for hazardous waste are held each May and September. Find out more at [fcgov.com/hazwaste](http://fcgov.com/hazwaste).

Year-round, household hazardous waste is accepted for no charge at Larimer County Landfill at 5887 South Taft Hill Road. For their specific hours and times, visit [Larimer.org/solidwaste/haz](http://Larimer.org/solidwaste/haz).





# RECYCLE

ALL ITEMS MUST BE EMPTY AND DRY

## METALS & GLASS



## CARDBOARD & PAPER



## PLASTIC BOTTLES, TUBS & PAPER CARTONS



# KEEP OUT

OF CURBSIDE RECYCLING



Please follow this handy guide for **curbside recycling**.

\* Starred items can be recycled elsewhere.

Learn more at [fcgov.com/recycle](http://fcgov.com/recycle) or [fcgov.com/a-z](http://fcgov.com/a-z).

18-09332 2/2018



- Discuss sources of yard waste- Mick Mercer, Tyler Bandemer, Susie Gordon, Lou Perez  
Lou Perez: The TAC met; sourcing is very important to the compost. We are waiting on more information and will report back to the PAC
- Develop tours of landfills, MRF and compost facilities-Stephen Gillette  
Are you interested in doing tours and where? Please reply to Stephen with your interest and we will try to get visits scheduled. We are working on Tier 1 projects and would like to suggest this be the focus of chosen tour facilities. The Recycling side of the landfill is a controversial issue. Understanding the recycling from beginning to end is important for any Ambassadors, as everything you put in your recycle bin does not get recycled.

**Suggestions:**

- Hazardous Waste and the big Recycle Center and bins are an important part
- Showing Waste to Energy, and conversion of methane, are examples in our own community that might motivate people into less traditional options.
- Focus on Tier one first and further down the road look into other options.
- Visit the Wellington property
- Would like the tours to fit with the topic at hand.

Tours handout:

**Possible field trips for Solid Waste Policy Committee**

1. Larimer County Landfill
  - a. Landfill
  - b. Larimer County Recycling Center
  - c. Household Hazardous Waste (HHW)
  - d. Garbage Garage
2. Local recycling centers
  - a. Hoffman Mill Concrete / Asphalt Recycling Facility
  - b. Timberline Recycle Center – Fort Collins
  - c. Loveland Recycling Center
  - d. Uncle Benny's Architectural Salvage
3. Local yard trimmings and food scraps facilities
  - a. Hageman's – Fort Collins
  - b. CSU compost facility – Fort Collins
4. Denver-area compost sites
  - a. A-1 Organic's Rattler Ridge Compost Facility – Keenesburg
  - b. Alpine compost facility – Denver ?
5. Boulder sites
  - a. Western Disposal Transfer Station- Boulder
  - b. Boulder County Materials Recovery Facility (MRF) – Boulder
  - c. Charm- Boulder
  - d. ReSource – Boulder ?
6. Denver recycling site
  - a. Franklin Street Material Recovery Facility (MRF) – Denver
7. Proposed landfill site north of Wellington
8. Waste Management landfill – Ault
9. Glass facilities
  - a. Miller/Coors Bottling - Wheatridge
  - b. Momentum Glass- Broomfield
  - c. Owens Illinois Bottle Plant- Windsor
10. Mountain facilities
  - a. Summit County Recycling Center – Dillon
  - b. Summit County Compost Facility – Dillon
  - c. Vail Honeywagon Compost Facility – Vail
  - d. Pitkin County Compost Facility – Aspen

- Recommendations for Federal Policy on packaging – Kevin McEachern insertion below  
Created a list of websites for packaging. Municipalities sometimes have their own policies on packaging.

**Comments:**

- This is a starting point, and there are many more. It is a very in-depth topic. We will find out where our Legislators are headed on this topic.
- Reducing packaging conflicts with safety and convenience. No more food from a bin, now it's safe, sanitized, FDA approved.
- We have companies locally that intentionally minimize post-consumer packaging. The toy itself is its own package. Designing features that include packaging. The Amazon boxes, Amazon is building planning ways to recover.



## Kevin McEachern handout: Packaging

### Solid Waste Policy Committee & TAC

- Recommendations for federal policy on packaging: Kevin McEachern
  - Online web information how to support policies on reduction in packaging

There are many web sites that offer information about support for future policies on reduction in packaging. It depends on what area you would like to tackle or all of it. Most recommendations are to address the producers from the beginning of the chain. What containers and packaging are they using to send out to the public. Municipalities are also making their own policies on what packaging is coming out of businesses in their city limits. This information may be what members of the committees already know. We need more information on what part of this vast subject is desired to help with a policy.

Udall, Lowenthal Release Outline of Legislation to Tackle Plastic Waste Pollution.

<https://www.tomudall.senate.gov/news/press-releases/udall-lowenthal-release-outline-of-legislation-to-tackle-plastic-waste-pollution-crisis>

Amendment related to the disposal and recycling of single-use plastic packaging and food ware.

<https://lao.ca.gov/BallotAnalysis/Initiative/2019-028>

Reducing Wasted Food & Packaging: A Guide for Food Services and Restaurants.

[https://www.epa.gov/sites/production/files/2015-08/documents/reducing\\_wasted\\_food\\_pkg\\_tool.pdf](https://www.epa.gov/sites/production/files/2015-08/documents/reducing_wasted_food_pkg_tool.pdf)

Packaging Policy Update & 2020 Outlook.

[https://www.greenerpackage.com/regulations/packaging\\_policy\\_update\\_2020\\_outlook](https://www.greenerpackage.com/regulations/packaging_policy_update_2020_outlook)

American Sustainable Business Council, Lets Collaborate to Reduce Packaging Waste.

<https://www.asbcouncil.org/policies-reduce-packaging-waste>

Federal Actions on Plastic Recycling, Zero Waste, Organics, and Garbage incineration: A Review.

<https://ilsr.org/review-of-federal-actions-on-plastic/>

U.S. Packaging Regulations.

<http://www.gorpak.com/pages/packaging-regulations-united-states>

EPA Policy and Guidelines.

[https://www.google.com/search?q=EPA+solid+waste+policy+and+guidlines&rlz=1C1CHBD\\_enUS788US788&oq=epa&ag=s=chrome.1.69i57i69i59j0i2i69i60i4.15698j0i7&sourceid=chrome&ie=UTF-8](https://www.google.com/search?q=EPA+solid+waste+policy+and+guidlines&rlz=1C1CHBD_enUS788US788&oq=epa&ag=s=chrome.1.69i57i69i59j0i2i69i60i4.15698j0i7&sourceid=chrome&ie=UTF-8)

Zero Waste: Producer Responsibility.

<https://www.ecocycle.org/zerowaste/overview/producer-responsibility>

Product Stewardship Institute.

<https://www.productstewardship.us/page/Packaging>

Federal Packaging Extended Producer Responsibility Legislation Under Development.

<https://www.natlawreview.com/article/federal-packaging-extended-producer-responsibility-legislation-under-development>



➤ Hauler licensing- Caroline Mitchell and Lou Perez

At the Technical Advisory meeting we discussed the rural and unincorporated areas. The County GIS department made maps defining streets and routes. We are defining the lines. We drafted a letter to send to the hauling community. Insertions below. We will take the TAC feedback, to the haulers for input, then tabulate summary for this committee to comment. We plan to send the letter out in the next week or two.

**Comments:**

- You said “take it to the haulers” but it should be thought of more as a partnership and not just ask for feedback. There could be some potential transfer station sites, that may be private sector. Look at it as a partner opportunity.

**Q:**

- What about haulers that come from Wyoming? Or haulers based here that go to Wyoming?

**A:**

- Right now, the ordinance is only relative to designated boundaries of Larimer and the area we have to work with.

**Comment:**

- That is why in the spirit of partnerships, I am not sure what kind of outcome we would want. If we are thinking about a Wasteshed that does not necessarily stop at our jurisdictional boundaries. Thinking of it more as a partnership and what are those kinds of opportunities that might accomplish the outcomes we desire. We should clearly state our outcomes
- And about haulers and partnerships, I would like it to be they come to the table with us instead of when we have to act upon it, so we have to hear accenting perspectives

**Q:**

- Are you thinking we are not open to WY because of a licensing requirement? Or that we should reach out to them?

**A:**

- Some haulers service WY and we receive from WY. This is where we need clear outcomes so we can say it’s either accomplishes the outcome or counter. If we were creating Waste to Energy, we need to ensure flow, but if we are reducing waste that would be a negative.

**Comment:**

- Right now we are working with hauler licensing is to ensure everyone who is a member of the IGA has an opportunity to have a model ordinance for hauler licensing and that we are collecting the appropriate data that we need to manage diversion through the Wasteshed as well as comply with the state requirements. Those are the goals driving the update to the licensing program. We can modify them as our vision grows to address other things as well.
- Laurie Kadrich: Our team has actually gone out and talked to the haulers already, before this and now we want to get consistent reporting for certain types of questions and then within that there is an opportunity to meet individually or collectively again to discuss it before we return it back to you

- Wade Troxell: And that includes transfer stations and private transfer locations potentially that's where I think we have to have that systems perspective
- Lou Perez: Right now, there has only been a lot of rumors about folks developing transfer stations, particularly one hauler but nobody has come forward to say they are building a transfer station therefore we'd have to work in sync with their plans

**Q:**

- Have we reached out to dispel a rumor or to solidify it?

**A:**

- Lou Perez: We will be asking those questions during our discussion, but this is information that they don't like to share publicly

**Comments:**

- Investment could be contingent upon the policy group
- Lou Perez: We are going to continue to move forward with the current plans, until someone actually says they are building a transfer station and are permitted for it. We must go off the current logistical routes and where they are going. So, we are trying to distinguish between the urban and the rural, the collection programs that are associated with the IGA, the compliance issues we have and the obligations that we are trying to put forward. If something else is brought to the table like a transfer station, then we will run up and look at it at the appropriate time
- Wade Troxell: Well, I would encourage bringing partnerships to us, not having it where we have to sort it out here.
- Caroline Mitchell: Conversations about transfer stations and our broader systems are really important but separate from hauler licensing. Ft. Collins and Loveland have a licensing system in place. Part of the goal of this project is to update the Larimer County licensing system.
  - Goals: know which businesses are operating in the community, and to have some base parameters around there must be insurance requirements, and they have to be operating in a safe manner.

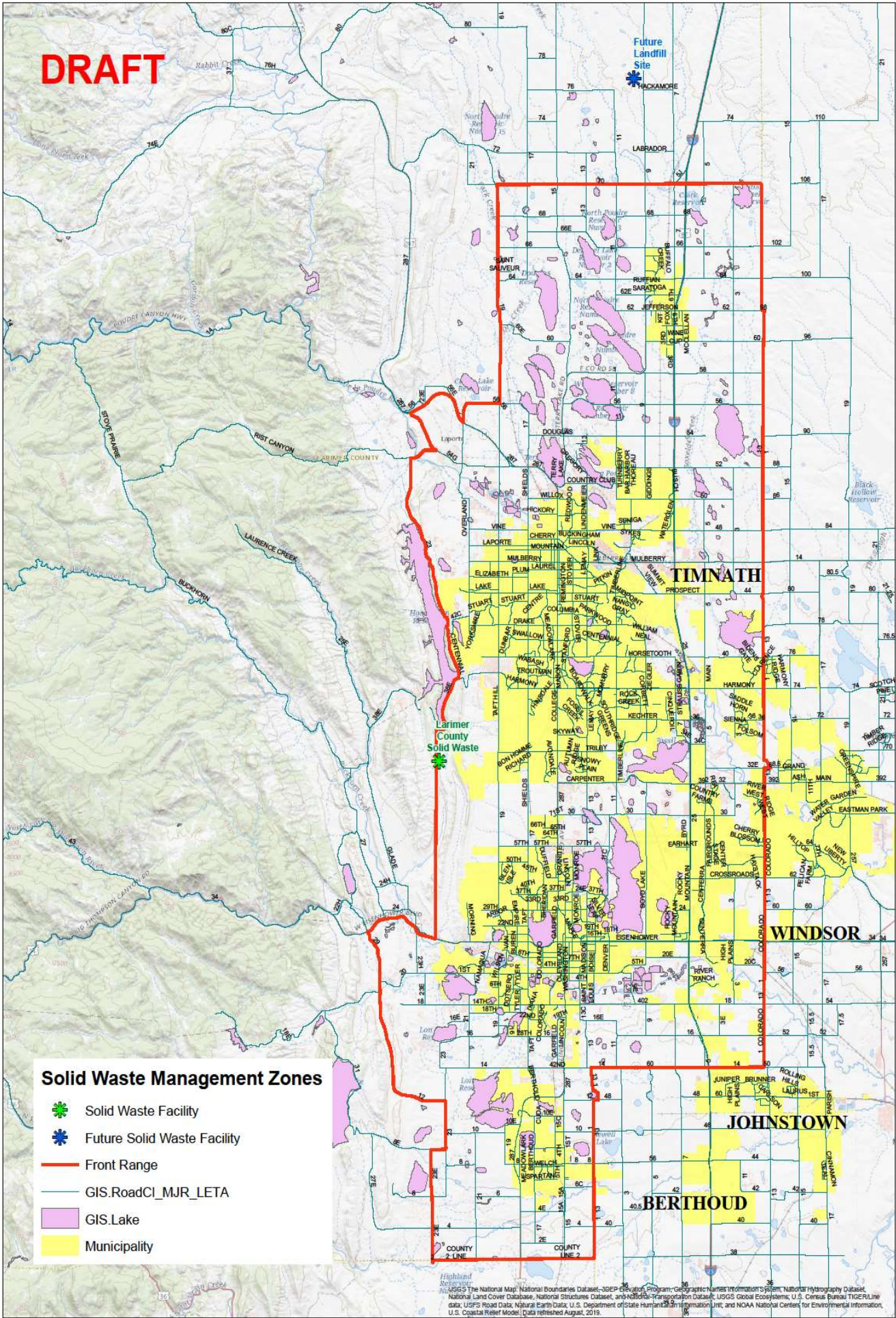
In Ft. Collins licensing is the how the requirement of bundling recycling and trash for single family homes is supported, it's how a lot of the programs have happened in Ft. Collins. As part of the Wasteshed Project development we are striving to get more uniformity among our licenses for the various communities, to have similar requirements in the urban areas. One license won't work for every community but striving for baseline similarities among the communities is valuable. Also making sure the data we are requesting is similar and perhaps could be handled in a centralized way. For the county licensing, the IGA includes two rings of services because there is an urban type of unincorporated Larimer County and then there is a very rural area, and that the services that make sense in those two areas are very different. We are striving to resolve uniformity of baseline service and helping draw the boundary line for where different services would be in rural parts. So that's the conversation on the licensing. Absolutely partnerships with our service providers are fundamental and there have been conversations about that initially in the development of the master plan. There was an initial direction that was generated from those conversations and now that is being refined for further input. So, the

conversation about licensing is sort of separate from the transfer station. This is clarification for what we are looking for in the hauler licensing conversations.

(Draft maps and draft Hauler letter inserted next pages)

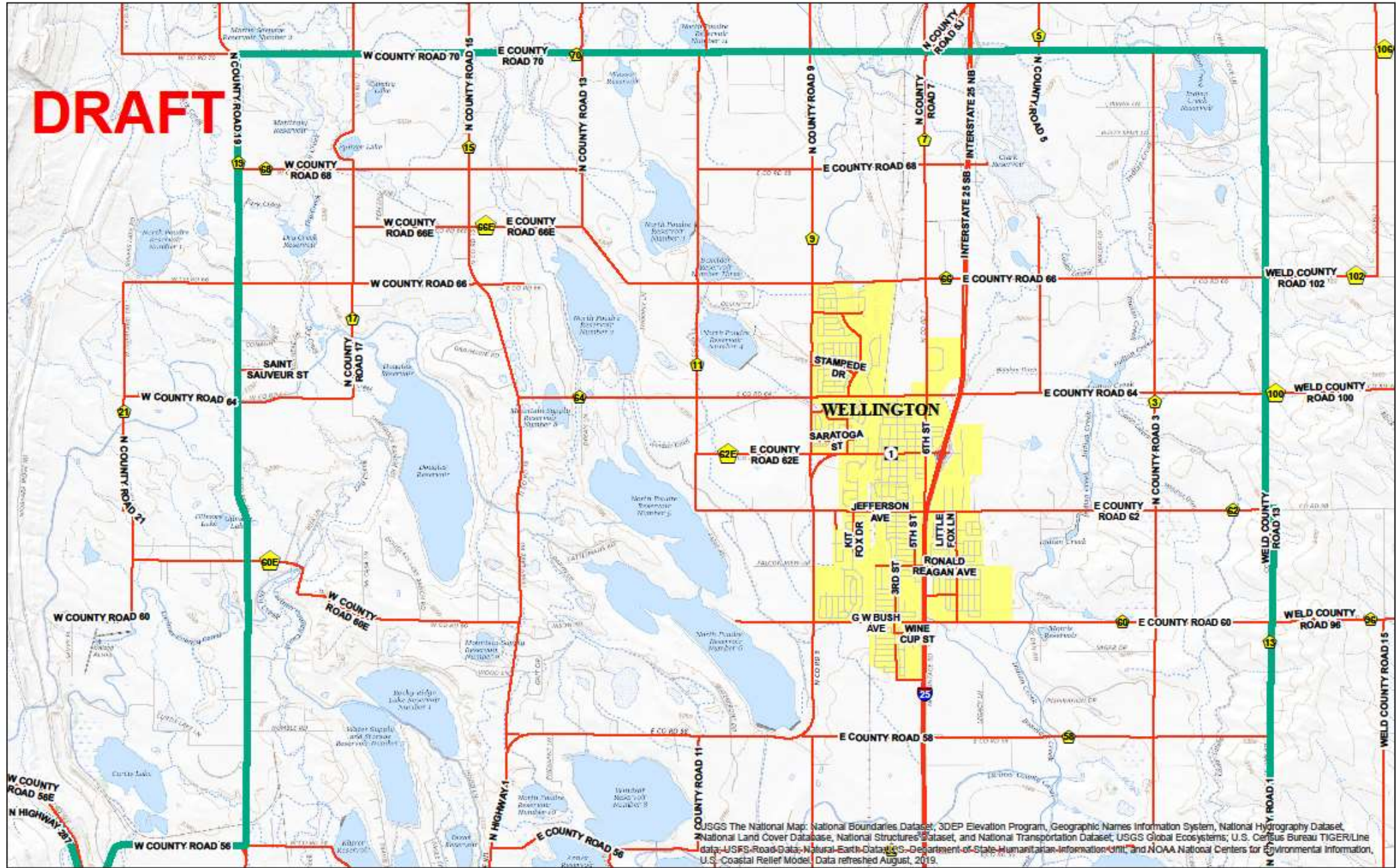


DRAFT

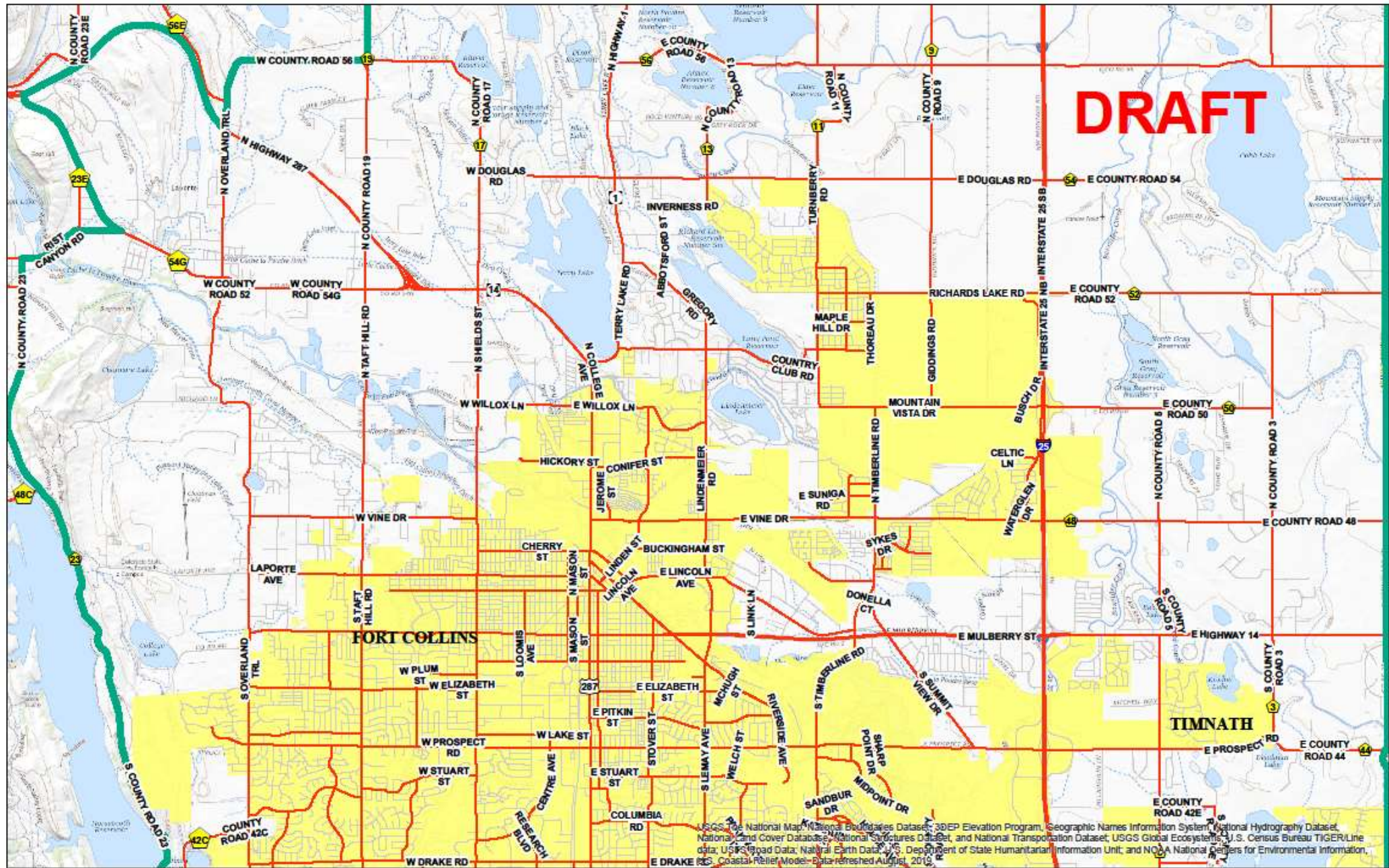




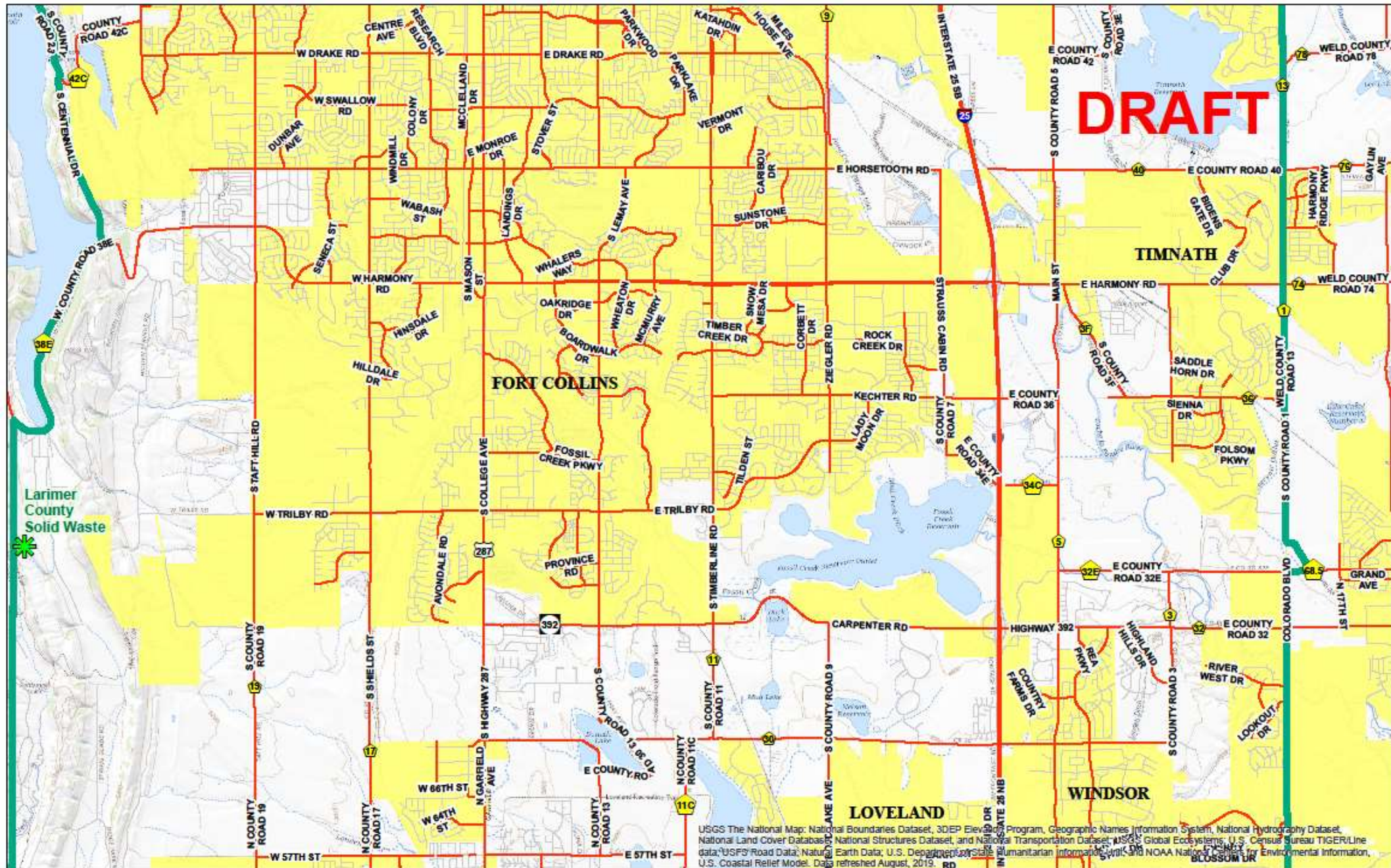
DRAFT





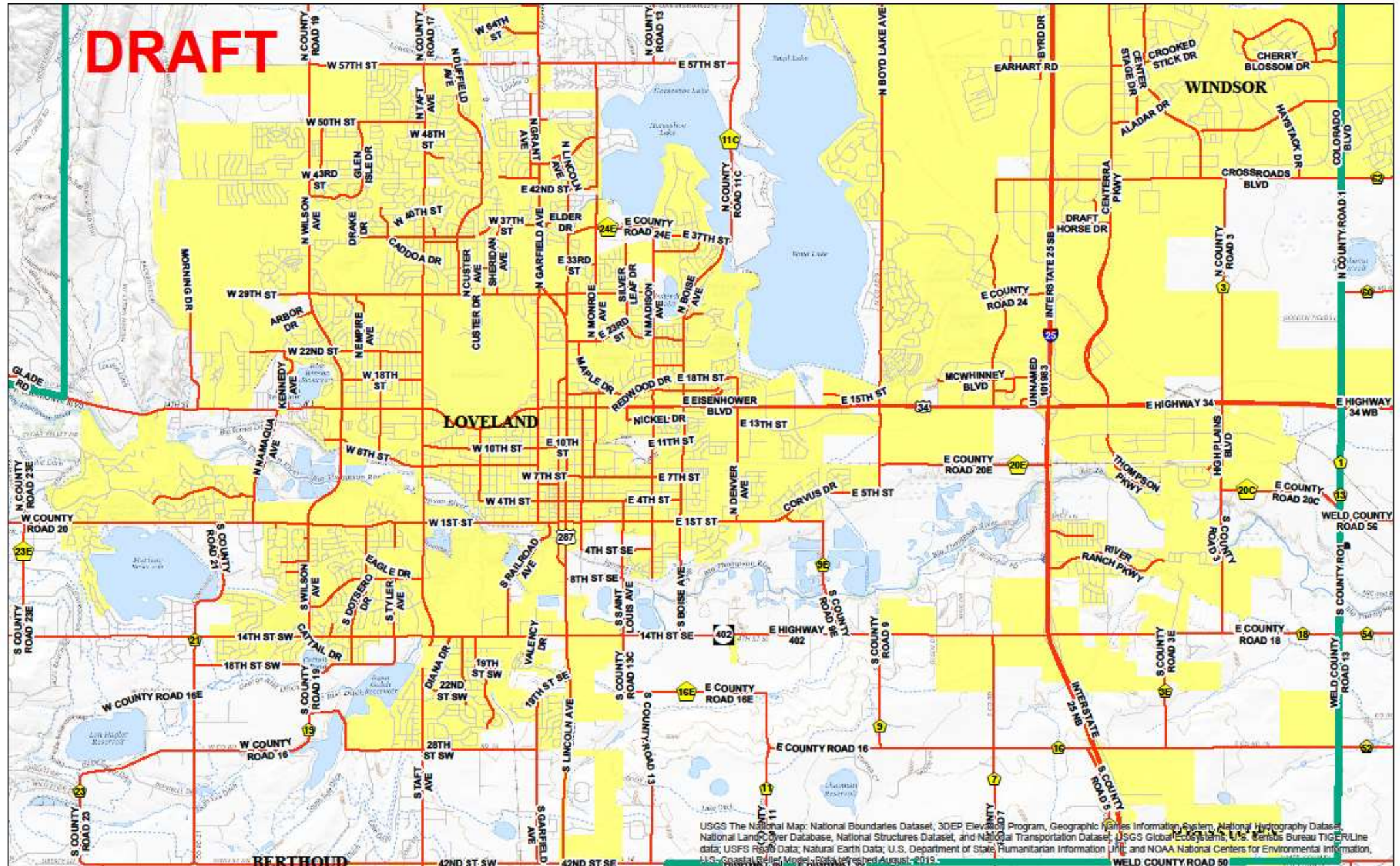




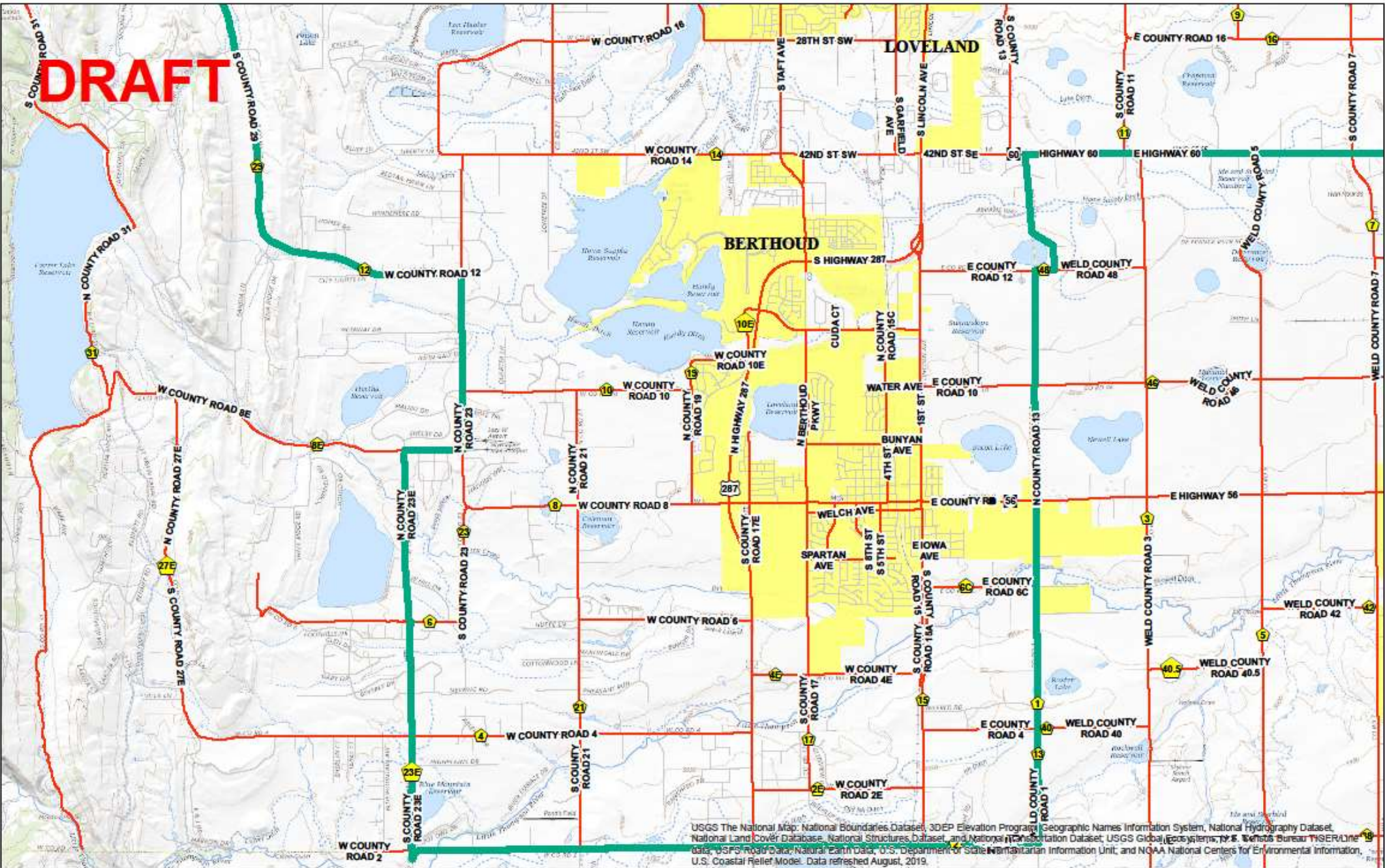




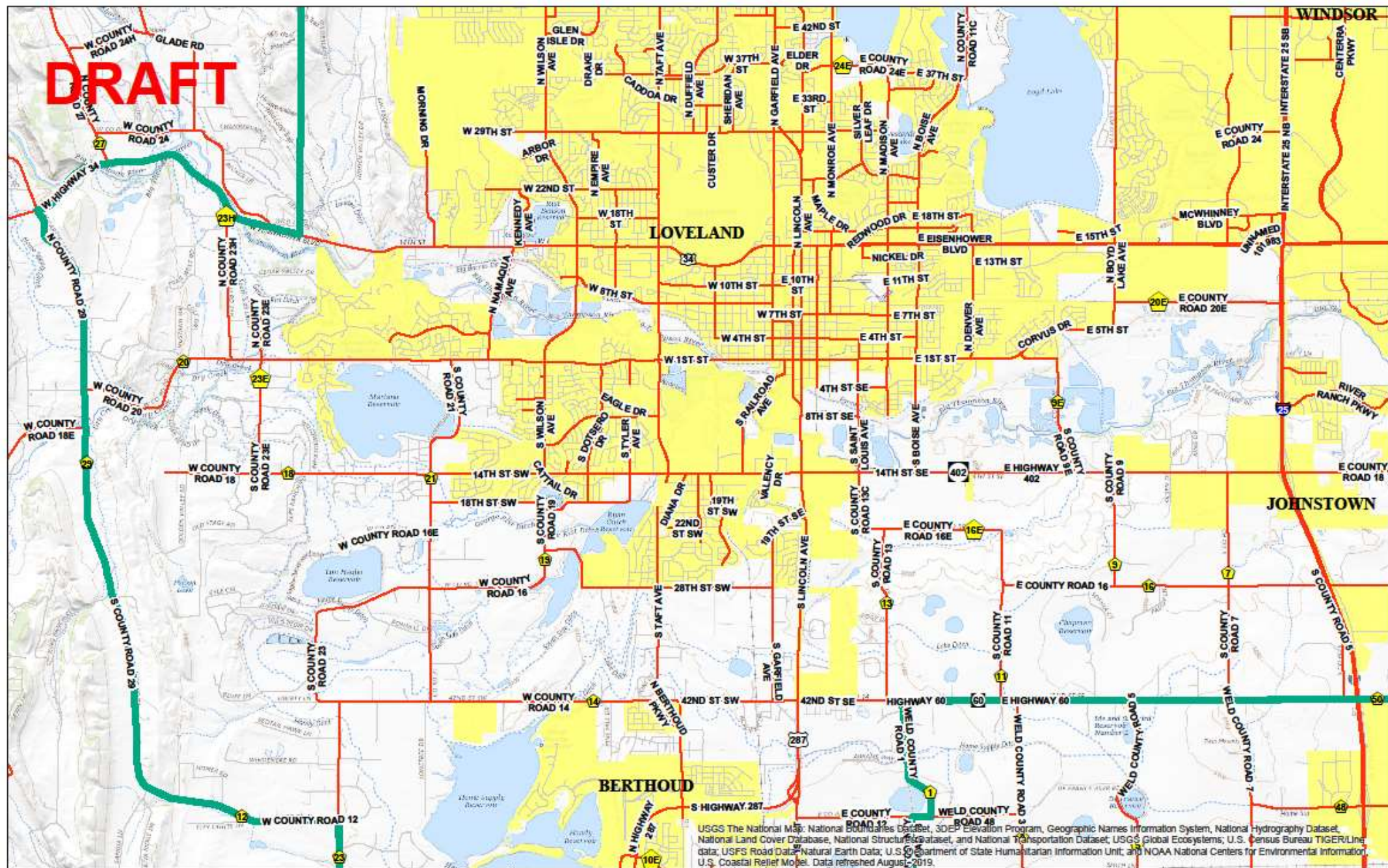
**DRAFT**











## **DRAFT HAULER SURVEY LETTER**

Dear hauler,

In accord with the 2019 intergovernmental agreement (IGA) adopted by Larimer County, Wellington, Estes Park, Loveland, and Fort Collins, the County is in the process of updating its hauling license and service requirements within unincorporated Larimer County.

As valued service providers to the community, Larimer County would appreciate your input as we are updating and developing service requirements for residential single-family homes. The IGA calls for certain hauling services in the unincorporated “urban” areas of Larimer County and different hauling services for unincorporated “rural” areas of Larimer County.

### Hauling Service Requirements for Unincorporated Urban Larimer County

- Pay-as-you-throw volume-based pricing for trash
- Recycling provided to customers with bundled pricing (recycling and trash bundled)
- Curbside yard waste collection offered as an optional service for a separate fee

Context: Due to their proximity to urban areas, service options can more closely align with service common in the incorporated cities and towns.

### Hauling Service Requirements for Unincorporated Rural Larimer County

- Pay-as-you-throw volume-based pricing for trash
- Recycling provided to customers as an optional service for a separate fee
- Curbside yard waste collection offered as an optional service for a separate fee

Context: Due to logistical challenges in rural Larimer County, different levels of service can be provided in these areas

### Boundary Line – Defining the Boundary Lines between Urban and Rural Unincorporated Larimer County

Defining hauling services within urban and rural will require setting designation markers. Larimer County requests your feedback regarding the appropriate location for the line that separates the Urban from Rural parts of unincorporated Larimer County. Please review the attached map. The inside boundary of the red line defines the Unincorporated Urban Hauling Area. The outside boundary of the red line defines the Unincorporated Rural Hauling Area.

### **Action requested**

You have a voice and can help us define and improve the community serviceability. Please provide us your feedback regarding the following questions:

- 1) Are you in agreement with the proposed boundary line between Urban and Rural areas for unincorporated Larimer County?



- 1) Any boundary lines you wish to change to improve hauling services for these areas? If so, please modify the boundary line on the attached map and provide us with your reasoning or comment.
  
- 2) Do you have any feedback about the proposed hauling service requirements for rural and urban services?
  
- 3) Would you like to meet with Larimer County staff to further discuss these topics? If so, what is your meeting preference? Shall we meet as a group with other haulers or try to arrange a one-one meeting with each individual hauler?

**Definitions for purpose of this document (*All relating to single-family residential service only*)**

**Pay-As-You-Throw (PAYT):** Households pay a variable rate depending on the amount of service they use. A different price structure for different container size.

**Bundled Recycling Pricing:** One price for trash service that includes recycling services; bundled pricing for both services

**Stand Alone Pricing Model:** A single price for a service offering, a.k.a. a la carte pricing. For example, one price for trash service and a separate price for recycling service.

Please provide us with your name and company:

---

---

---

Thank you for your assistance with this document and your feedback.

Sincerely,

Stephen Gillette

**Request for private hauler thoughts:**

Matt Gallegos:

- The licensing is separate from what we were talking about.
- We have already had several conversations from this perspective with County officials and City officials. The difficult part of things as a hauler is conversations on flow control, and the threat for us. It makes no sense for us to invest in Larimer County, we are looking at Weld now for their development and what's going on over there. Technically as a business the boundaries don't affect us from that perspective, we are trying to serve both communities and we have to have a community plan ourselves to meet those service plans. We are the largest independent hauler in Northern Colorado and one of the only remaining independent haulers in the nation of any substance. We haul about 80% of the recycling in Larimer County now. So we are the ones that most impacted by things that are going on here. We've been wanting to put in a transfer station and or a recycling plant in place for a number of years, but we continually have this hanging threat over our heads of flow control of these materials. You can look at the development of these facilities and know they are very expensive to build and when you are a private business you invest 10 million in something like this and then the county comes in and takes it away from you because they wrote a law that would put us out of business. So, we've been hanging on these things for almost a decade. We haven't liked the way that this has gone in Larimer county with having our largest competitor in control of things. We know we've paid a lot more to dispose of our recycling here because of that, we didn't have our own facility.

**Comments:**

- John Kafalas: I trust that Lou Perez and Caroline Mitchell are having these conversations to figure out the best way to move forward.
- Matt Gallegos: We want to stress as much as we can that we want things to succeed. We know that we've had a significant part in the success of the City of Fort Collins programs. We've grown the market share considerably in part because of that, and our efforts trying to build our business while taking care of the environment. You see our trucks; you see that message and really that's what we are trying to do. One of the 3-step factors of economics is social. On that note, we have customers who tell us what they want from us. Just like businesses tell government essentially, but if you have a small sector of those customers representing the whole community it can be deceptive in what's really going on. You touch a little bit of what's going on globally right now, with the recycle markets. Every hauler and independent hauler in the country is hanging on what's going to happen here and we are at least trying to develop something, because nobody wants to see costs go up especially toward your customers. When you are independent like us, we are less concerned about profiting and more about our people and our community and livelihood and our reputation as citizens of the community, so it is a little different. Currently we employ over 250 people and looking to expand to 300 and it would be a lot more to run a recycle center and some of those other things but we are in desperate need and getting ready for expansion of our own facility and parking, as you can see if you've driven by to visit our facility and seen our traffic jam. We know the community has grown and we are investing in the future ourselves and the equipment and technology. City of Loveland has invested in some technology that we've been using for a while too. We appreciate you listening and taking the time to hear us. Thank you.

- Draft an amendment to the IGA which allows for a supermajority of Solid Waste Policy Council Board Members to modify the time frame for project completion (should this be recommended to the BOCC?)- Laurie Kadrach and County Attorney
  - Laurie Kadrach: Initially attorney suggested to take the things from the IGA that had time frames and create new time frames and then make an amendment for each one of those. Laurie Kadrach will schedule a visit so they can have a detailed conversation and develop a better solution, like having a permanent fix within the IGA. Laurie Kadrach will bring something to the next meeting after she has a chance to meet face to face with the attorney.
  - Ross Cuniff: If we are going to change the whole IGA with every date change, each stake holder would have to approve every change.
- Transfer Station site plan and update (handouts inserted, includes the whole current site) -Lou Perez
 

Note: Current campus of Business Office, Haz Waste etc. will remain in the plans shown. Composting will be done in Tier-1-yard waste, then Tier 2 adding food waste.

**Comment:**

- Leah Johnson: Attended the Behavioral Health Council meeting and that particular group said as a council they haven't had a lot to do with the site plan and the location of the Behavioral Health facility. They are dealing more with the money that is going outside this facility. The resolution at this point was to have Laurie Stolen , come to this group to address any concerns that this group has.
- Leah Johnson experienced very little concern from this group, with being our property neighbor and having these facilities located next to each other. Laurie Stolen will be invited to the Wasteshed meeting to talk about what all has been done to date.
- Lou Perez: HDR who did the site design and implementation plan for us is also talking with Keith Meyers from Atesco with the engineering and planning for that site. So these two camps have been in discussion and coordinating the infrastructure.
- Wade Troxell: Would like to reaffirm that these plans will both be moving forward. For example, Transit, this is nowhere on our Transit Master Plan maybe it is for Loveland. So how do people access this facility? Also think of the mixed uses, this is an industrial site. We spoke of composting, winds, and 40-foot fences. Also socially thinking if you have a mental health problem go to the landfill. What other options were investigated? What about Mountain Crest and partnerships? And that's along our transit corridors. Being a GeoCentroid for the county and I think what we want are services not necessarily a facility. So how do we best deliver services? I would like to understand at some level to come to a reconciliation for all of us that this is where that facility goes.
- Leah Johnson: What we know about the transfer station and compost is something we have an in-depth knowledge of but not the Behavioral Health group. I think it's more appropriate to bring that conversation up to Laurie Stolen and that group to make sure that the partnership the facility the messages are all beneficial to the community as a whole. We want to make collective decision to benefit the county as a whole. And having these two facilities next to each other is an important conversation to have.
- Dave Clark: So, is this within the GMA? Infrastructure is a major commitment. Who jointly owns the current Landfill property? The current landfill property is owned jointly but County only does operations. The jointly owned part of the current Landfill property is the north side of the site, just about halfway, but the southern side is owned solely by the County, where the Behavioral Health facility is going. The BCC already authorized the construction of the Behavioral Health facility.
- The new North landfill site is owned solely by the County. Behavioral Health is also strictly a County Facility.
- Steve Johnson: The IGA sets out volume goals that when those are reached the County will have

the obligation to build the new facilities.

- Laurie Kadrach: The amounts and how they were determined and if they still apply today will be addressed at future Policy Council meetings.
- Leah Johnson: We will have Laurie Stolen and Lou Perez work on update of how the two facilities will work beneficially for the community.
- Laurie Kadrach: A lot of work has already been done and you will get a better idea of how this site was selected. The transportation piece is also addressed in their planning.
- Dave Clark: Is the new facility designed for expansion? Yes. We know the volume currently since this new facility designed to handle the current amount and increased amounts. The increased cost will cover transportation. Private citizens will not be driving their trash to the new north Landfill. There will be a cut offline where commercial haulers won't bring loads down to current site only to turn it around and deliver to new property.
- Ross Cuniff: We are trying to reduce the traffic going into the new landfill which is part of the new transfer facility design. The combined effort of licensing and increased capacity to hold waste for several bad weather days should help keep traffic minimized

Wade Troxell: What is the architectural standard? Speaking to the external appearance. The airport was zoned industrial for example, and the Transfer Station is a very large structure and if we put a mental health facility next to it, we can have a much higher standard without a lot of cost, and we could add to the quality. Early on we were talking about trash, but knew we needed to discuss materials management I think we are sliding back to age old practices and thinking as demonstrated in the architecture. I will be critical of it.

Leah Johnson: I visited the Boulder building that was very attractive and presentable. How you present yourself plays a role in the pride of the work.

Lou Perez: HDR has facilities like this in Phoenix and is what we are modeling.

Ross Cuniff: What are the architectural standards that apply?

Leah Johnson: What does the feedback mean in the scope of moving forward and our role?

Laurie Kadrach: The role of this Policy Committee is advising only to the BCC. The decision is often left to the department the Board has authorized HDR and our Engineering to provide information on standards if there is something that were looking at that is different from the scope of work we take it back to the board, but in this case we are moving in this direction

Steve Johnson: We are very interested in the input. This is a collaborative venture and we consider the other entities partners.

Leah Johnson: Are we in a place where things can be changed or are, we moving forward? We are still in design.

Wade Troxell: Would like to hear from someone about land use standards, location, why here, the thinking and the arguments that made the case for this site as a location for Behavioral Health mixed with Transfer Station. Is this the highest and best use? What was the criteria? What is the staging, recycling stage 2 conceptually? Or would like to challenge the assumptions that led to this.

Laurie Kadrach: This is addressed in the County's comprehensive plan.

Leah Johnson: Has there been some updated conversations to the town of Wellington to make sure their concerns are being addressed? Lou Perez: none since a few months ago.

Cody: The county staff has provided information to the meetings where there were questions. Lou Perez and his team have addressed questions and incorporated points of concern into the site via the EPA standards. There are long term concerns, such as transportation and visual but our concerns are being addressed.

Outreach and communication will also be handled by the new employee position created.







BUILDING ELEVATION  
TYPE = F-01

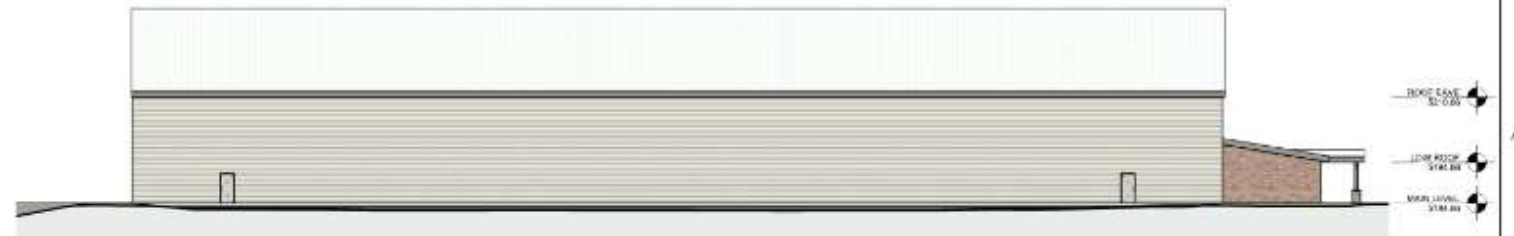
Planned Transfer Station



BUILDING ELEVATION  
TYPE = F-02



BUILDING ELEVATION  
TYPE = F-03



BUILDING ELEVATION  
TYPE = F-04



ISSUE	DATE	DESCRIPTION

PROJECT MANAGER		Project Manager
TEAM 1	F. M. LAST	
TEAM 2	F. M. LAST	
TEAM 3	F. M. LAST	
TEAM 4	F. M. LAST	
TEAM 5	F. M. LAST	
TEAM 6	F. M. LAST	
TEAM 7	F. M. LAST	
PROJECT NUMBER		Project Number

PRELIMINARY  
NOT FOR  
CONSTRUCTION  
OR  
RECORDING

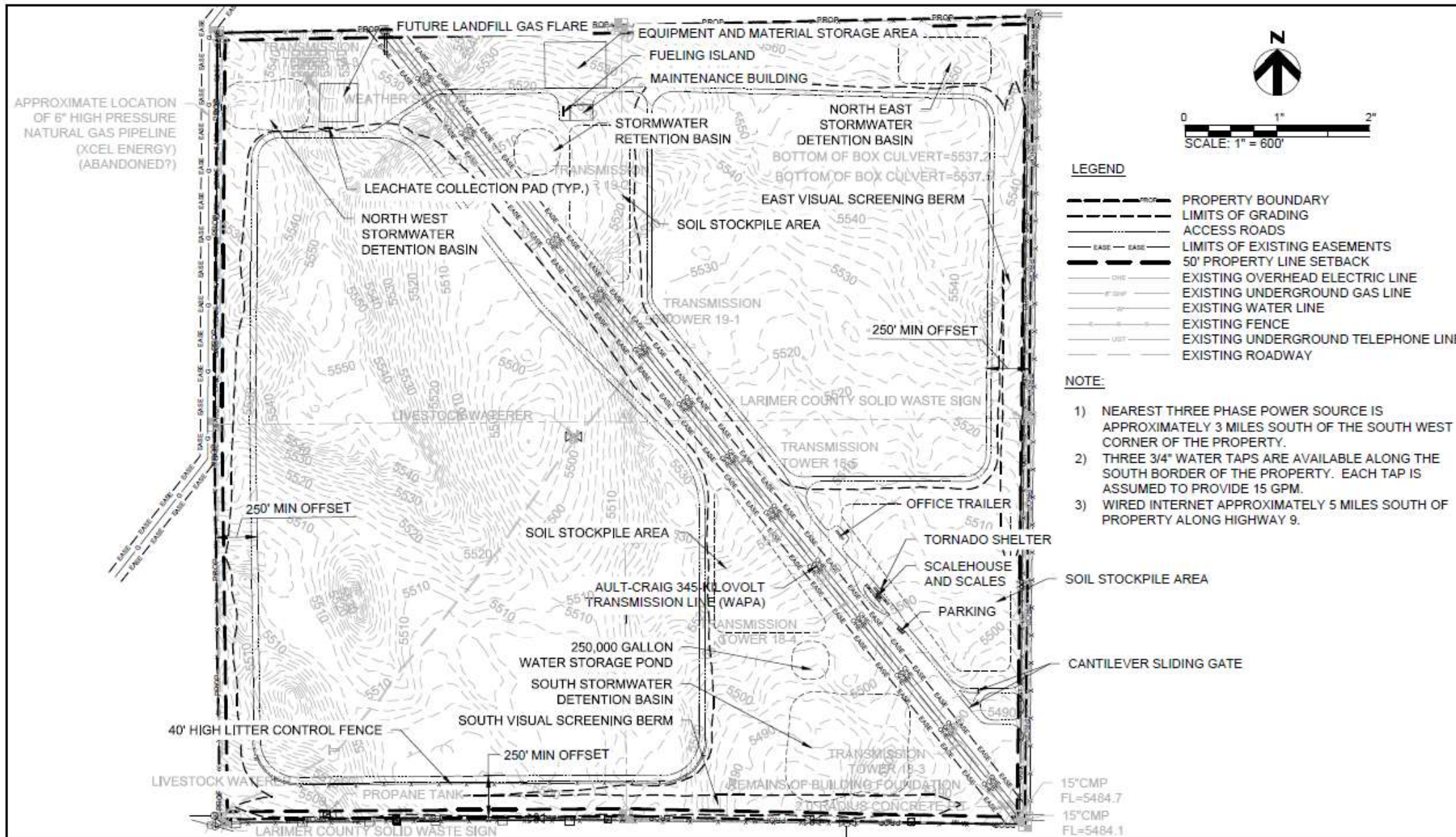
LARIMER COUNTY  
TRANSFER STATION

OPTION 2  
BUILDING ELEVATIONS



SHEET  
00A201

- Landfill site plan-new landfill- Lou Perez (handouts and timeline insertion below)  
EDOP is being drafted and hope to be submitting for landfill permit to State of Colorado.



DRAFT



**LARIMER COUNTY NORTH LANDFILL  
PRELIMINARY LANDFILL  
INFRASTRUCTURE SITE MAP**

NORTH LANDFILL - MISCELLANEOUS FIGURE

DATE  
12/5/2019  
FIGURE  
C

**New Business: None**

- Estes Park – Kevin McEachern and Stephen will be going over boundary lines to see if they change and take it to the trustees.

**Next meeting date:** Would like to reduce the number of meetings to allow more time for Technical Committee to do the work. Updates could be a monthly report to stay current and meet quarterly instead. 2<sup>nd</sup> Thursday works. April, July, September, was suggested. (April cancelled due to Covid-19)  
Caroline and Stephen will be meeting with the Ad-hoc policy committee in between

**Adjournment**