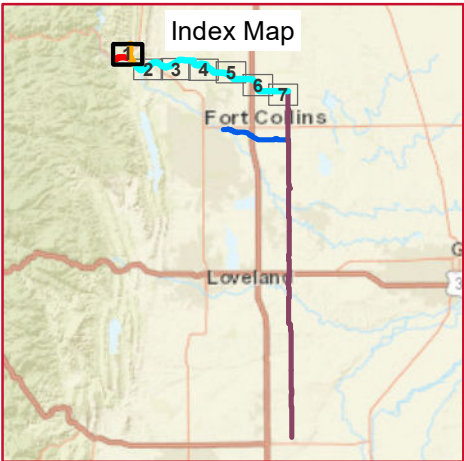


NORTHERN TIER  
SHEET 1 OF 7  
MAP SERIES 5B:  
WILDLIFE (MULE DEER)

Legend

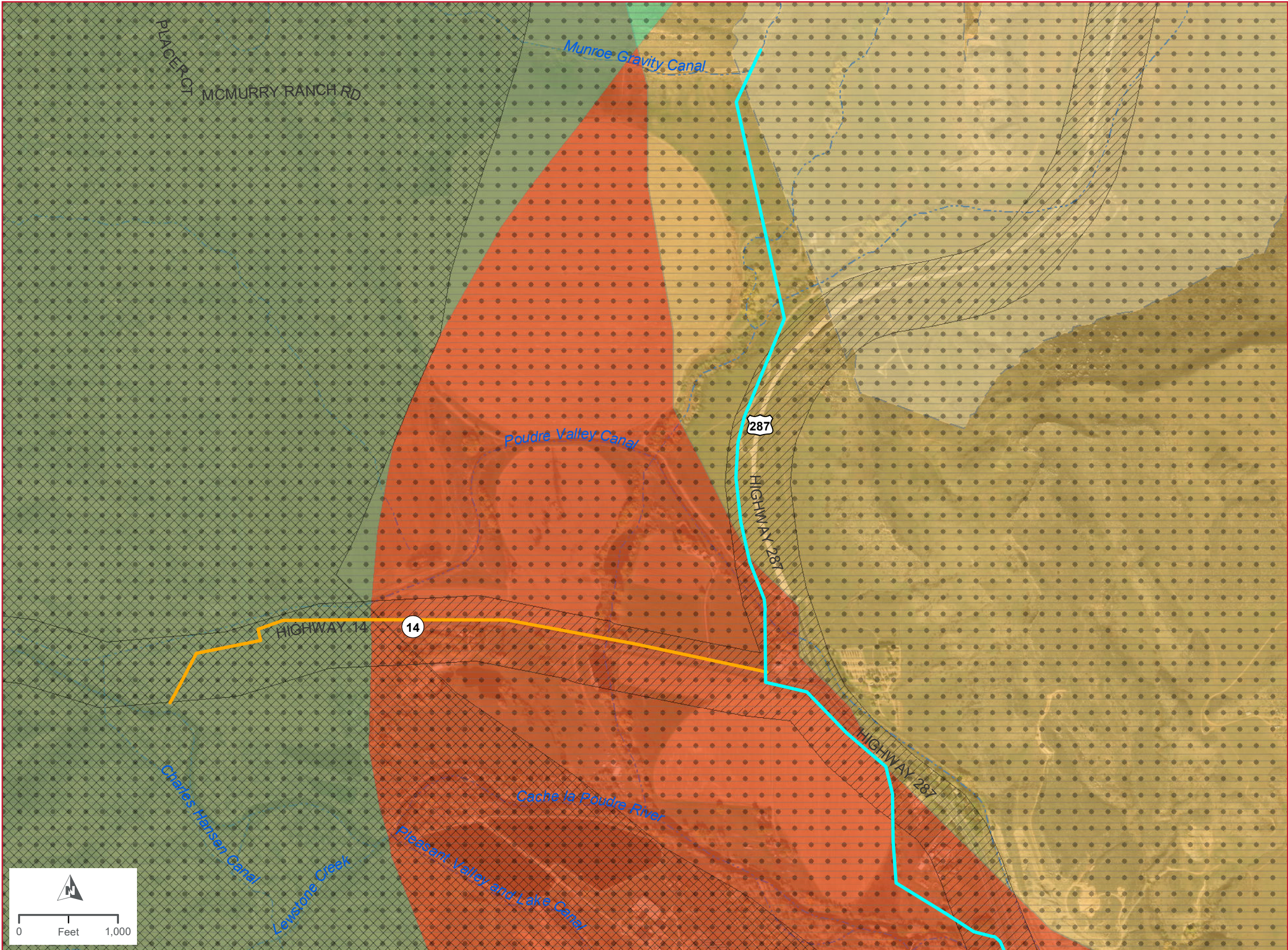
- Glade Release/Poudre Release Pipeline
- Northern Tier Pipeline
- Poudre Intake Pipeline
- County Line Pipeline
- County Boundary
- Railroad
- Stream/Ditch
- Glade Reservoir (future)
- Mule Deer Overall Range
- Mule Deer Resident Population Areas
- Mule Deer Highway Crossings
- Mule Deer Summer Range
- Mule Deer Winter Concentrated Area
- Mule Deer Severe Winter Range
- Mule Deer Winter Range

For information about historic/cultural resources, please view the Final Environmental Impact Statement.



Imagery Date: 10/2017, 03/2018

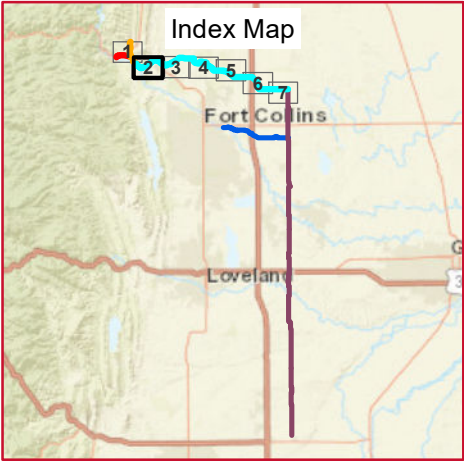
DATA SOURCES: Northern Water, Larimer County, HDR



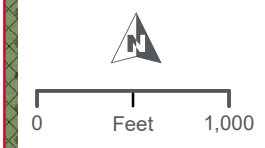
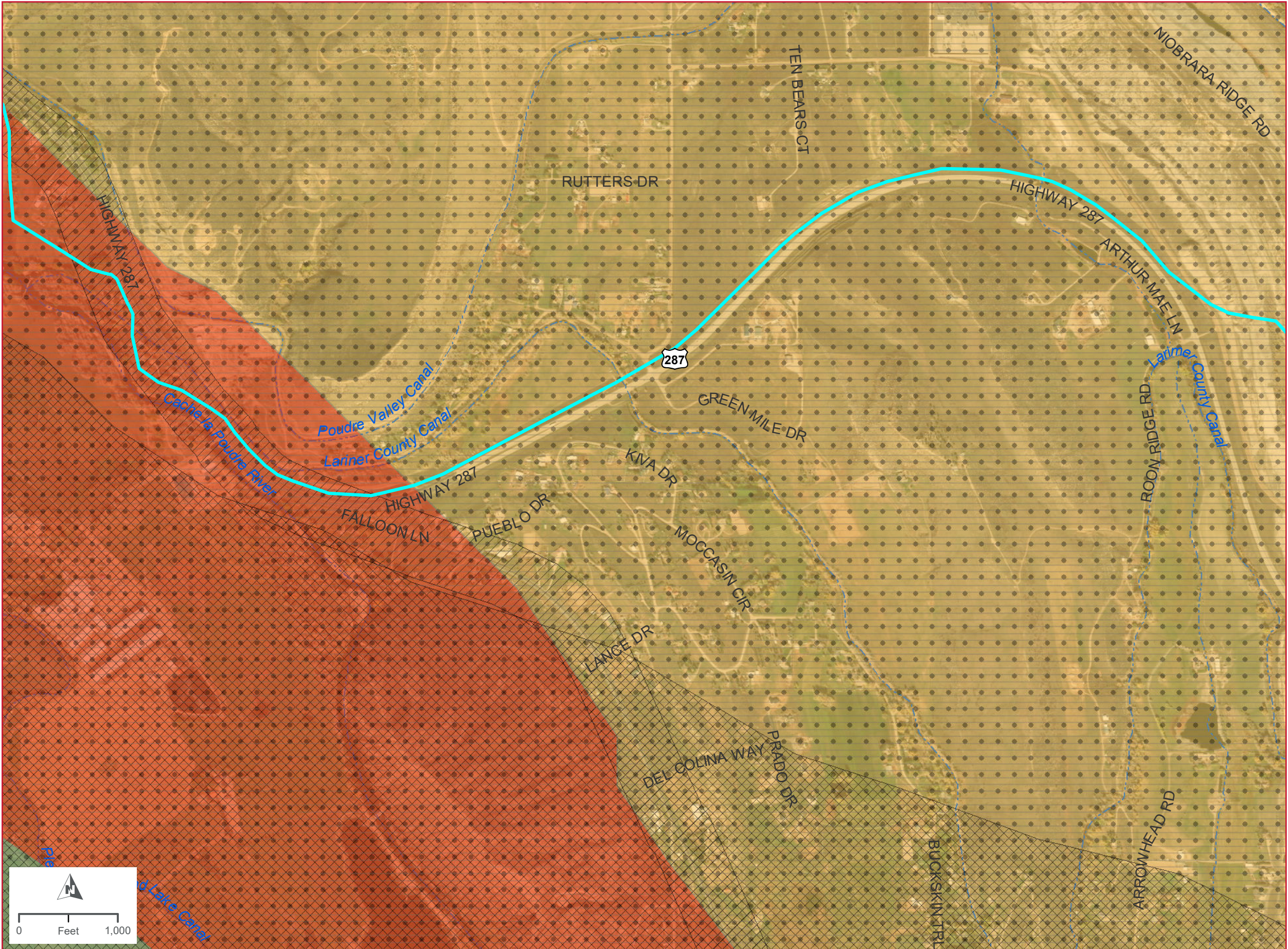
NORTHERN TIER  
SHEET 2 OF 7  
MAP SERIES 5B:  
WILDLIFE (MULE DEER)

- Legend**
- Glade Release/Poudre Release Pipeline
  - Northern Tier Pipeline
  - Poudre Intake Pipeline
  - County Line Pipeline
  - County Boundary
  - Railroad
  - Stream/Ditch
  - Glade Reservoir (future)
  - Mule Deer Overall Range
  - Mule Deer Resident Population Areas
  - Mule Deer Highway Crossings
  - Mule Deer Summer Range
  - Mule Deer Winter Concentrated Area
  - Mule Deer Severe Winter Range
  - Mule Deer Winter Range

For information about historic/cultural  
resources, please view the Final Environmental  
Impact Statement.

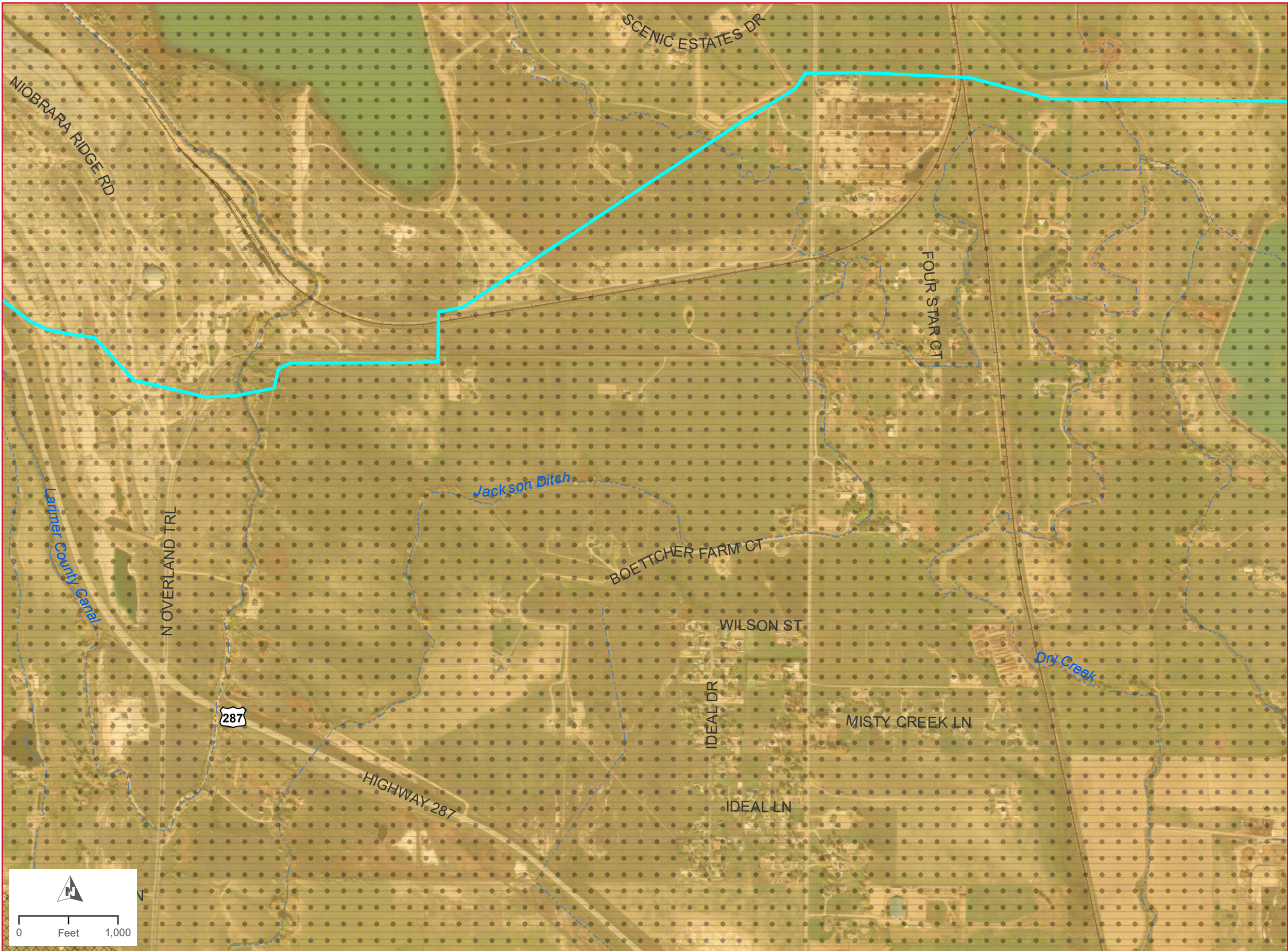


DATA SOURCES: Northern Water, Larimer County, HDR



Wildlife Data Source: USACE and Colorado Parks and Wildlife

NORTHERN INTEGRATED SUPPLY PROJECT

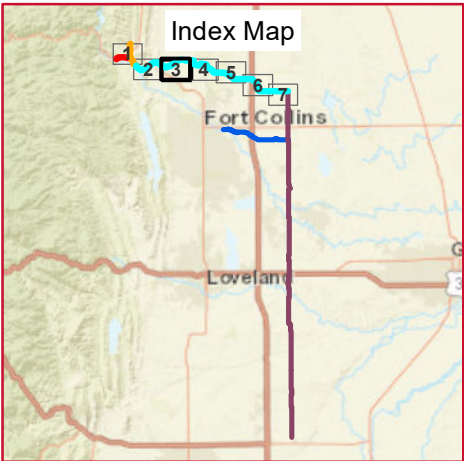


**NORTHERN TIER  
SHEET 3 OF 7  
MAP SERIES 5B:  
WILDLIFE (MULE DEER)**

**Legend**

- Glade Release/Poudre Release Pipeline
- Northern Tier Pipeline
- Poudre Intake Pipeline
- County Line Pipeline
- County Boundary
- Railroad
- Stream/Ditch
- Glade Reservoir (future)
- Mule Deer Overall Range
- Mule Deer Resident Population Areas
- Mule Deer Highway Crossings
- Mule Deer Summer Range
- Mule Deer Winter Concentrated Area
- Mule Deer Severe Winter Range
- Mule Deer Winter Range

For information about historic/cultural resources, please view the Final Environmental Impact Statement.



Imagery Date: 10/2017

DATA SOURCES: Northern Water, Larimer County, HDR

Wildlife Data Source: USACE and Colorado Parks and Wildlife

**NORTHERN INTEGRATED SUPPLY PROJECT**

## Legend

- Glade Release/Poudre Release Pipeline
- Northern Tier Pipeline
- Poudre Intake Pipeline
- County Line Pipeline
- County Boundary
- Railroad
- Stream/Ditch
- Glade Reservoir (future)
- Mule Deer Overall Range
- Mule Deer Resident Population Areas
- Mule Deer Highway Crossings
- Mule Deer Summer Range
- Mule Deer Winter Concentrated Area
- Mule Deer Severe Winter Range
- Mule Deer Winter Range

Imagery Date: 10/2017

The index map shows a portion of northern Colorado. A red line, representing the study area, runs north-south through the center of the map. Seven numbered points are marked along this line: 1 (red), 2 (yellow), 3 (green), 4 (black box), 5 (blue), 6 (cyan), and 7 (magenta). The map also shows major roads (red lines) and water bodies (blue lines). The cities of Fort Collins and Loveland are labeled. The title 'Index Map' is at the top.

This aerial map displays a residential area with a cyan boundary line and a cross-hatched area. The map includes the following labels:

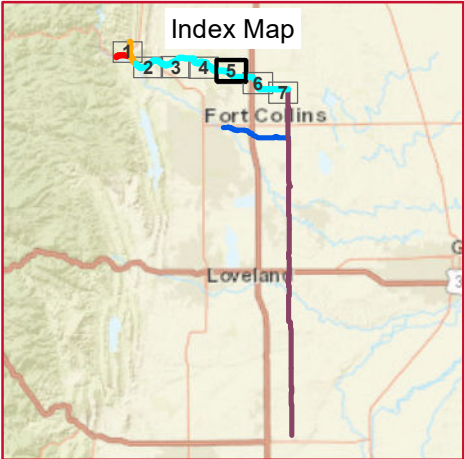
- Streets:** HOOD LN, EAGLE LAKE DR, HIGHWAY 1, GREY ROCK DR, WINDCREST LN, E DOUGLAS RD, KENYON DR, CLYDE ST, LA MESA DR, SBARG LN, WOODY CREEK LN, HERON CV, CHERRY HILLS DR, DINE DR, ERIE DR, PATRICIA DR, VISTA LAKE DR, BRAIDWOOD DR, MESA DR, W DOUGLAS RD, SWAN LN, RD 100, and ST.
- Water Features:** Jackson Ditch and Larimer County Canal.
- Other Features:** A cyan boundary line, a cross-hatched area, and a white circle with the number 1.
- Scale and Orientation:** A scale bar (0 to 1,000 Feet) and a north arrow are located in the bottom left corner.

NORTHERN TIER  
SHEET 5 OF 7  
MAP SERIES 5B:  
WILDLIFE (MULE DEER)

Legend

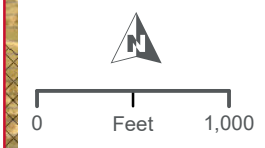
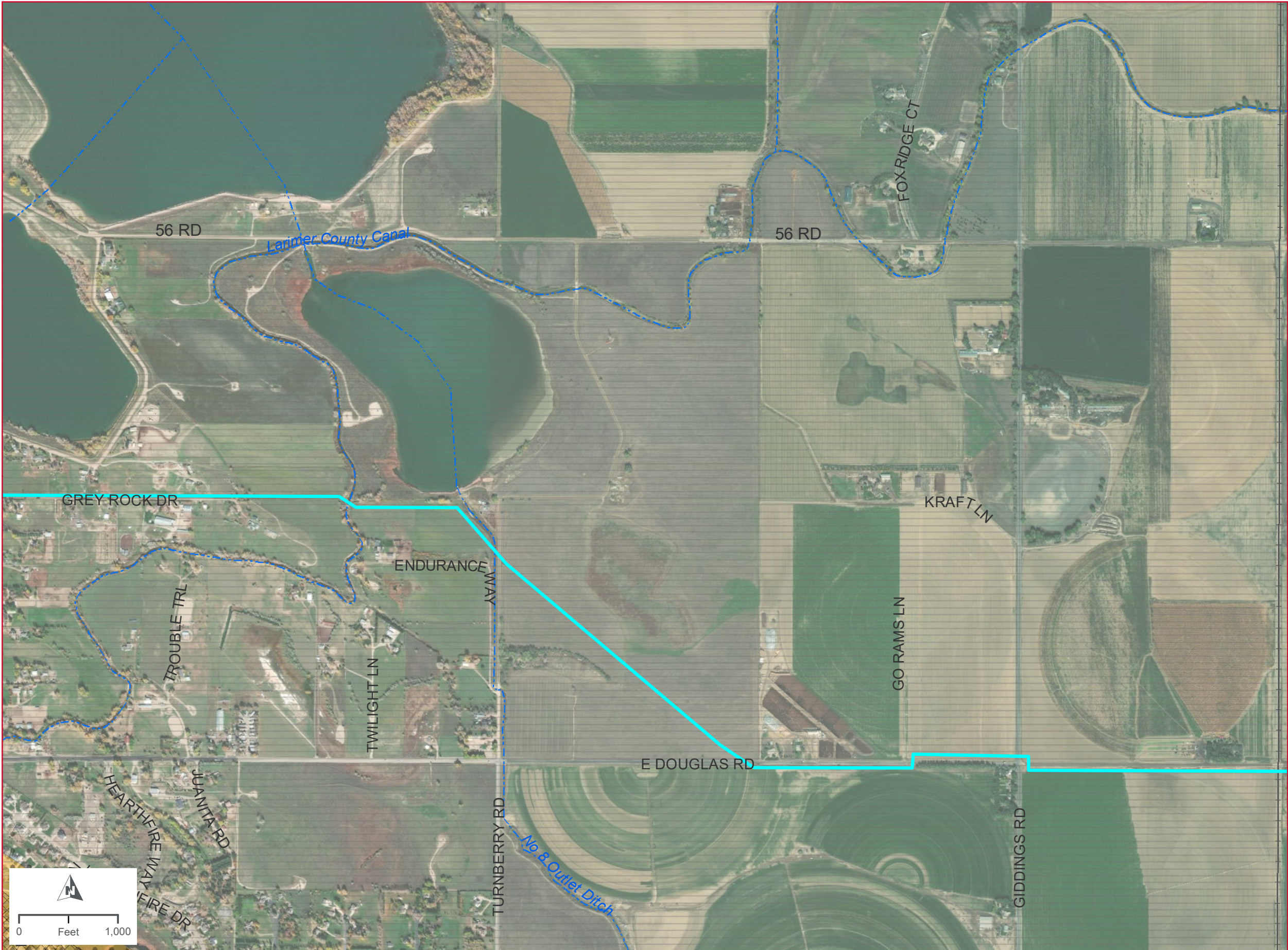
- Glade Release/Poudre Release Pipeline
- Northern Tier Pipeline
- Poudre Intake Pipeline
- County Line Pipeline
- County Boundary
- Railroad
- Stream/Ditch
- Glade Reservoir (future)
- Mule Deer Overall Range
- Mule Deer Resident Population Areas
- Mule Deer Highway Crossings
- Mule Deer Summer Range
- Mule Deer Winter Concentrated Area
- Mule Deer Severe Winter Range
- Mule Deer Winter Range

For information about historic/cultural  
resources, please view the Final Environmental  
Impact Statement.



Imagery Date: 10/2017, 10/2018

DATA SOURCES: Northern Water, Larimer County, HDR



Wildlife Data Source: USACE and Colorado Parks and Wildlife

NORTHERN INTEGRATED SUPPLY PROJECT



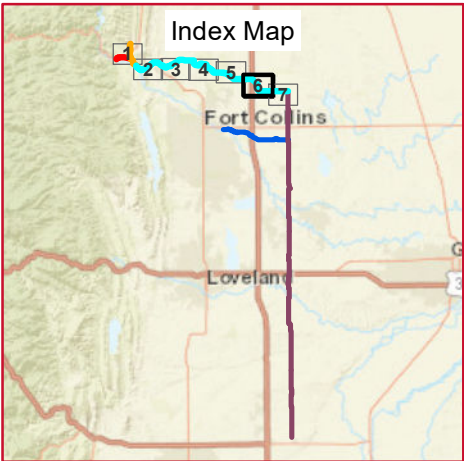
Dewberry

NORTHERN TIER  
SHEET 6 OF 7  
MAP SERIES 5B:  
WILDLIFE (MULE DEER)

Legend

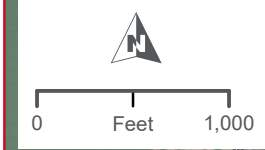
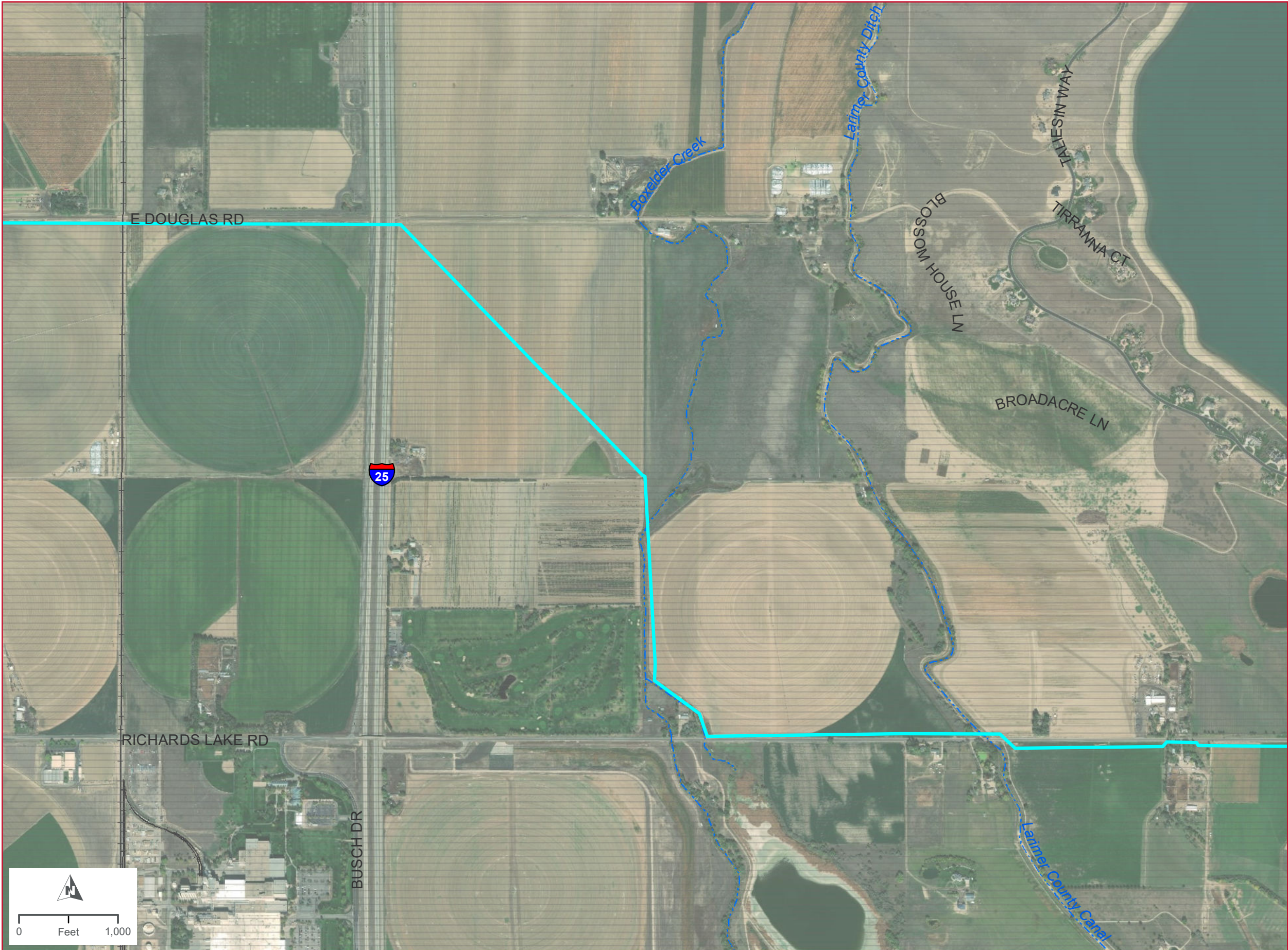
- Glade Release/Poudre Release Pipeline
- Northern Tier Pipeline
- Poudre Intake Pipeline
- County Line Pipeline
- County Boundary
- Railroad
- Stream/Ditch
- Glade Reservoir (future)
- Mule Deer Overall Range
- Mule Deer Resident Population Areas
- Mule Deer Highway Crossings
- Mule Deer Summer Range
- Mule Deer Winter Concentrated Area
- Mule Deer Severe Winter Range
- Mule Deer Winter Range

For information about historic/cultural  
resources, please view the Final Environmental  
Impact Statement.



Imagery Date: 10/2018

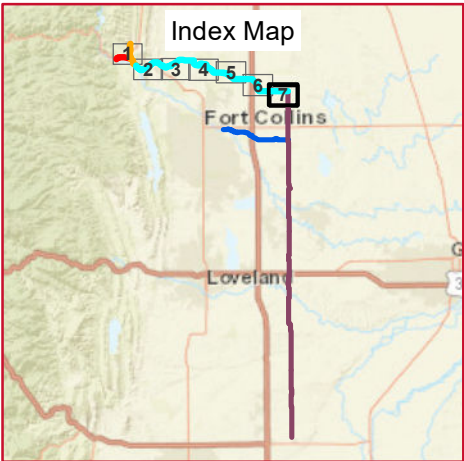
DATA SOURCES: Northern Water, Larimer County, HDR



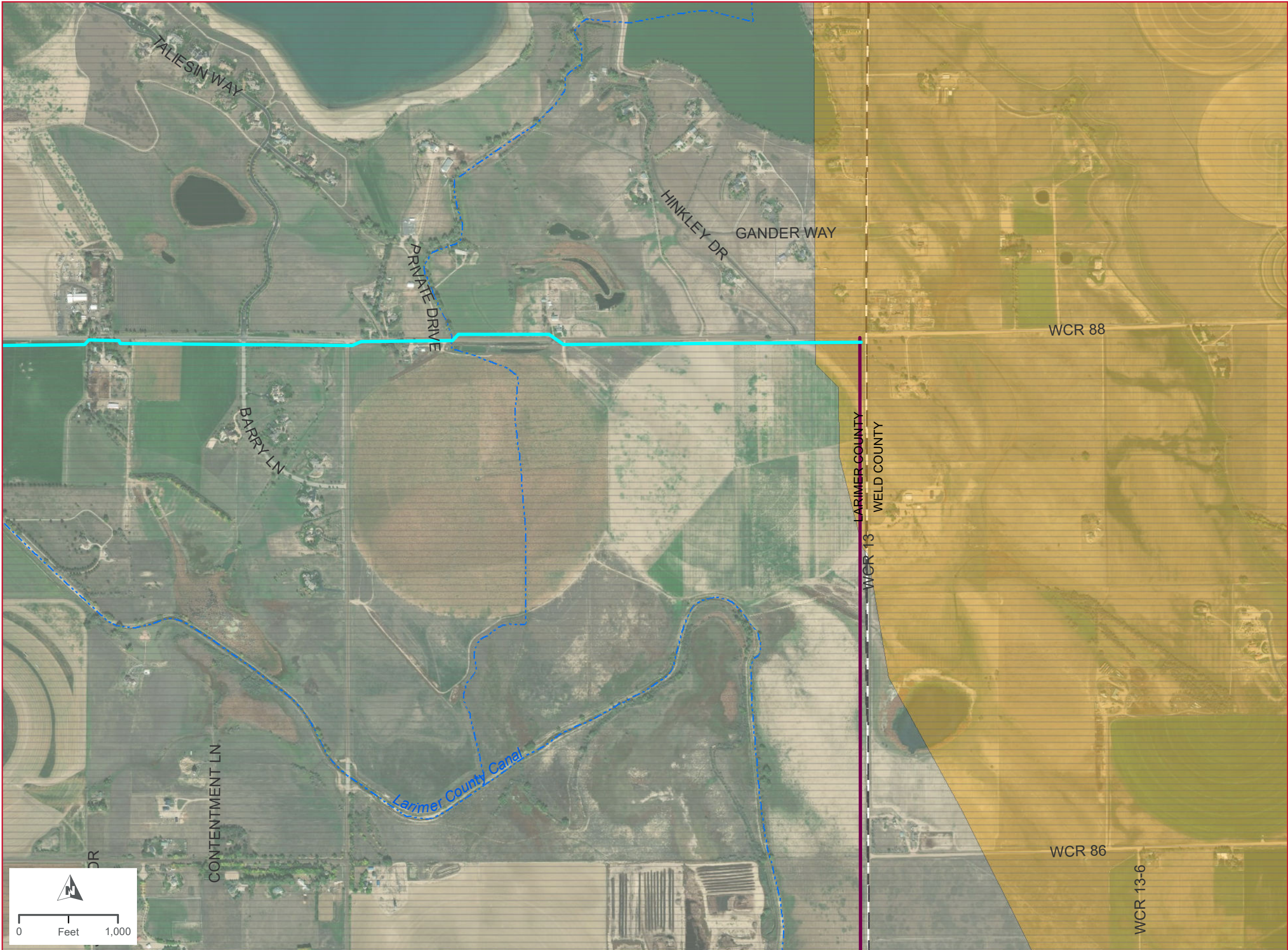
NORTHERN TIER  
SHEET 7 OF 7  
MAP SERIES 5B:  
WILDLIFE (MULE DEER)

- Legend**
- Glade Release/Poudre Release Pipeline
  - Northern Tier Pipeline
  - Poudre Intake Pipeline
  - County Line Pipeline
  - County Boundary
  - Railroad
  - Stream/Ditch
  - Glade Reservoir (future)
  - Mule Deer Overall Range
  - Mule Deer Resident Population Areas
  - Mule Deer Highway Crossings
  - Mule Deer Summer Range
  - Mule Deer Winter Concentrated Area
  - Mule Deer Severe Winter Range
  - Mule Deer Winter Range

For information about historic/cultural resources, please view the Final Environmental Impact Statement.



DATA SOURCES: Northern Water, Larimer County, HDR



Wildlife Data Source: USACE and Colorado Parks and Wildlife

NORTHERN INTEGRATED SUPPLY PROJECT



Dewberry