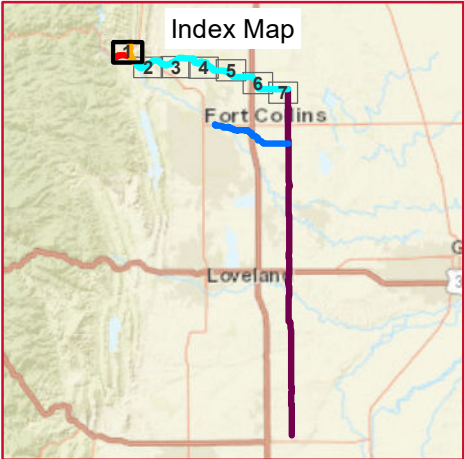


NORTHERN TIER
SHEET 1 OF 7
MAP SERIES 5D:
WILDLIFE (ELK)

Legend

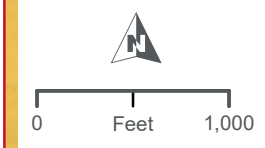
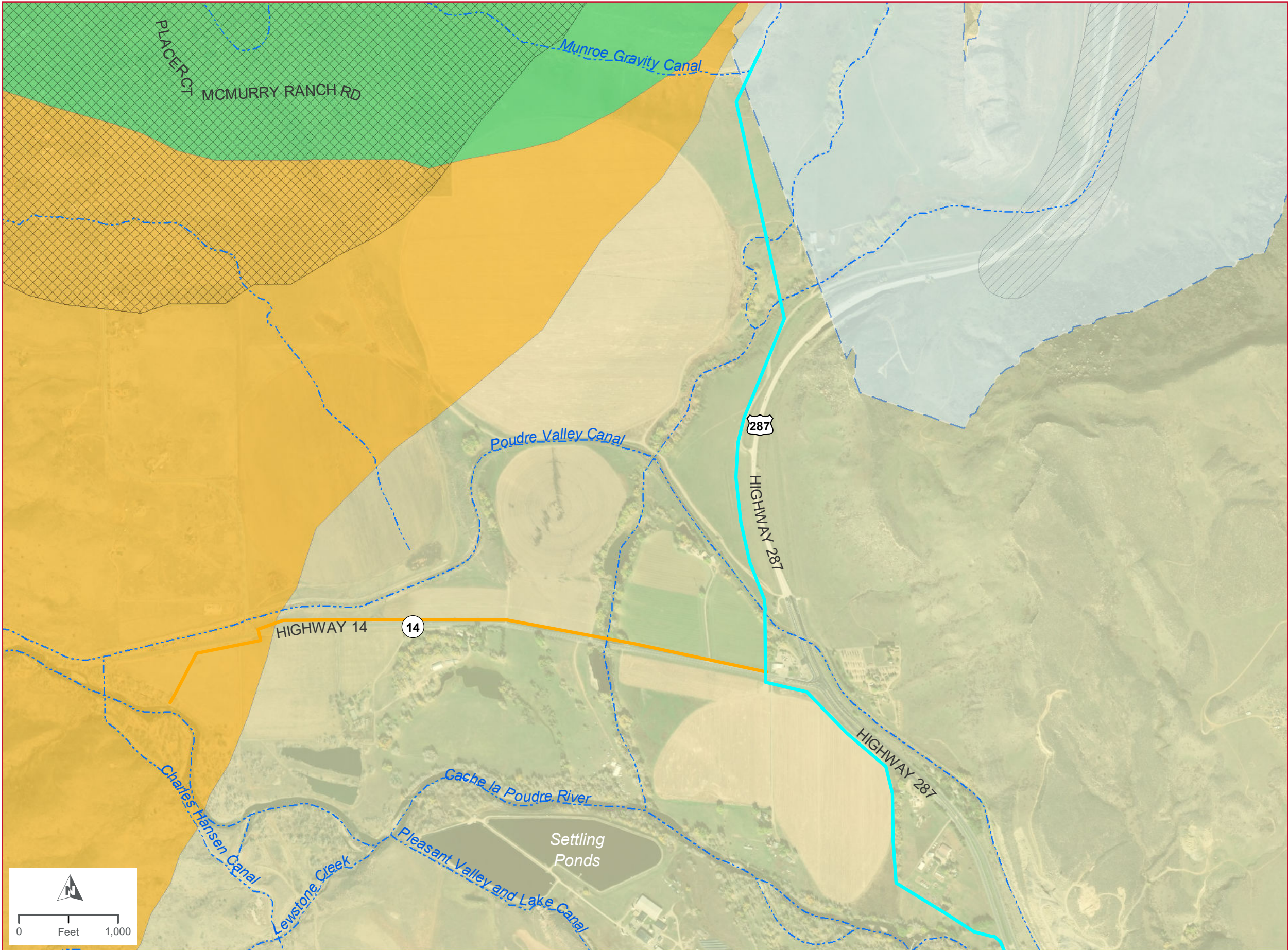
- Glade Release/ Poudre Release Pipeline
- Northern Tier Pipeline
- Poudre Intake Pipeline
- County Line Pipeline
- County Boundary
- Railroad
- Stream/Ditch
- Glade Reservoir (future)
- Elk Highway Crossings
- Elk Resident Population Area
- Elk Winter Concentration Area
- Elk Winter Range
- Elk Overall Range

For information about historic/cultural resources, please view the Final Environmental Impact Statement.



Imagery Date: 10/2017, 03/2018

DATA SOURCES: Northern Water, Larimer County, HDR

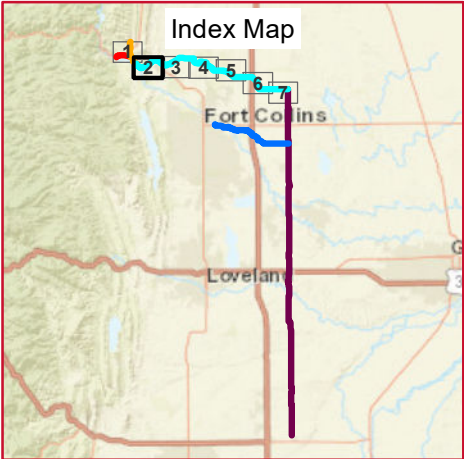


NORTHERN TIER
SHEET 2 OF 7
MAP SERIES 5D:
WILDLIFE (ELK)

Legend

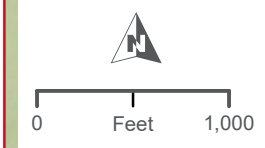
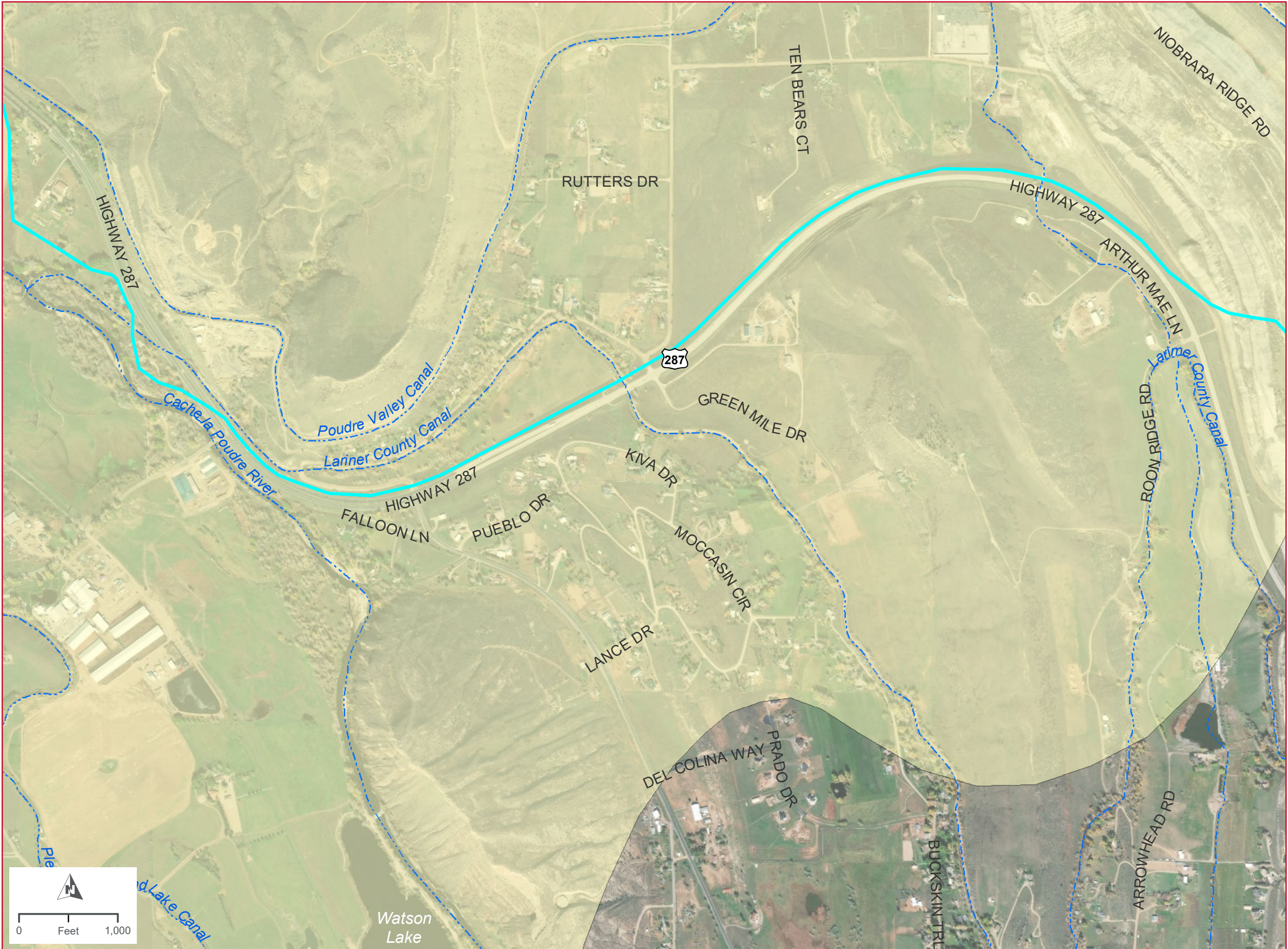
- Glade Release/ Poudre Release Pipeline
- Northern Tier Pipeline
- Poudre Intake Pipeline
- County Line Pipeline
- County Boundary
- Railroad
- Stream/Ditch
- Glade Reservoir (future)
- Elk Highway Crossings
- Elk Resident Population Area
- Elk Winter Concentration Area
- Elk Winter Range
- Elk Overall Range

For information about historic/cultural
resources, please view the Final Environmental
Impact Statement.



Imagery Date: 10/2017

DATA SOURCES: Northern Water, Larimer County, HDR

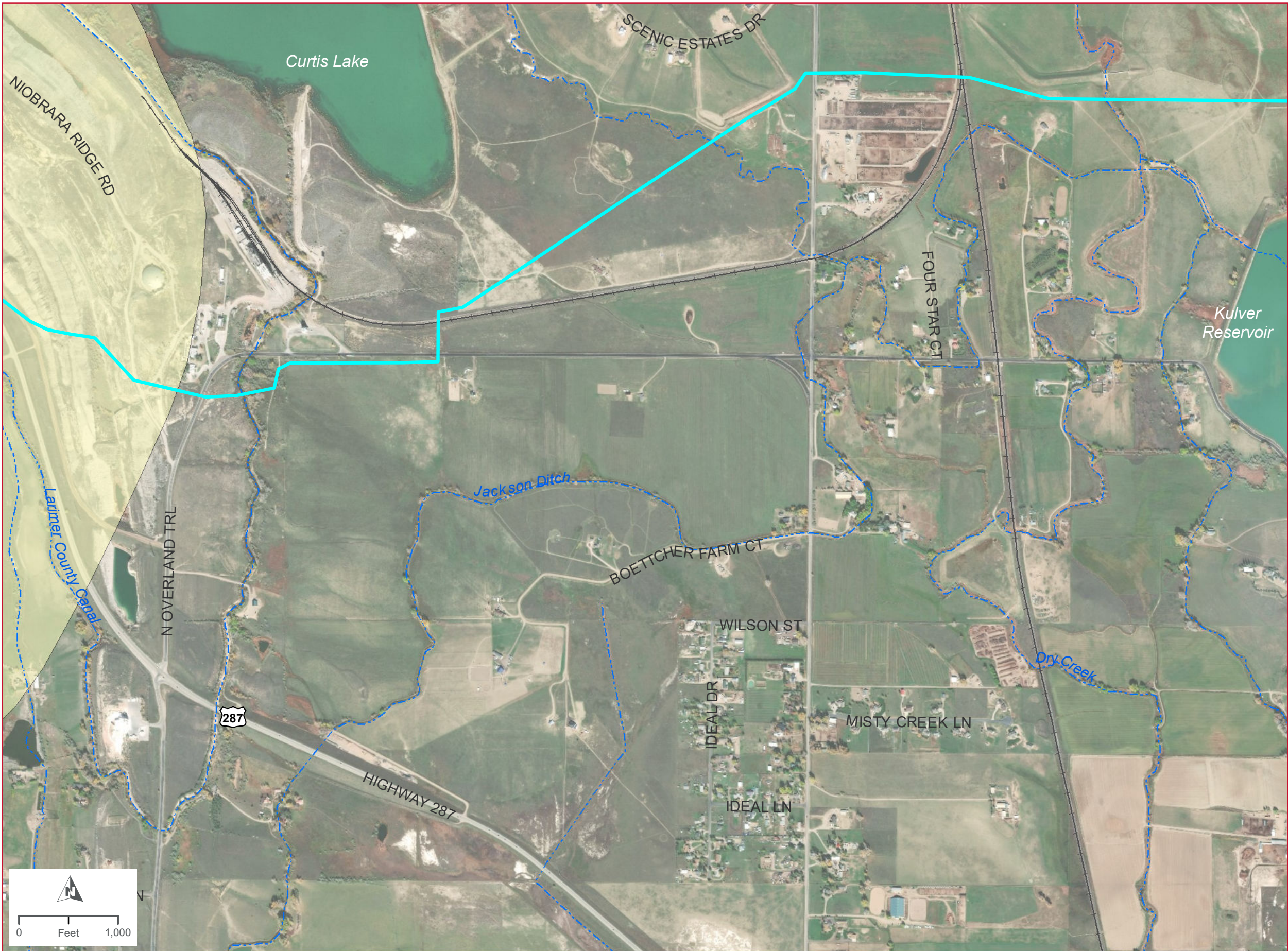


Wildlife Data Source: USACE and Colorado Parks and Wildlife

NORTHERN INTEGRATED SUPPLY PROJECT



Dewberry

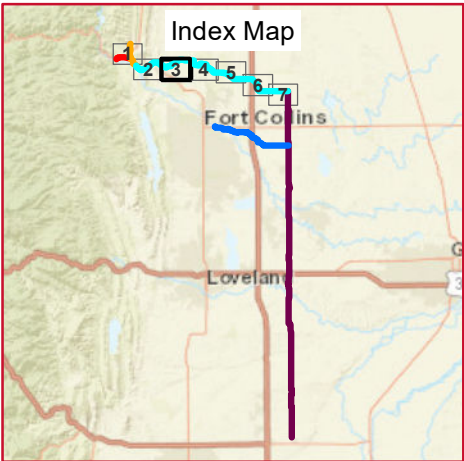


**NORTHERN TIER
SHEET 3 OF 7
MAP SERIES 5D:
WILDLIFE (ELK)**

Legend

- Glade Release/ Poudre Release Pipeline
- Northern Tier Pipeline
- Poudre Intake Pipeline
- County Line Pipeline
- County Boundary
- Railroad
- Stream/Ditch
- Glade Reservoir (future)
- Elk Highway Crossings
- Elk Resident Population Area
- Elk Winter Concentration Area
- Elk Winter Range
- Elk Overall Range

For information about historic/cultural resources, please view the Final Environmental Impact Statement.



Imagery Date: 10/2017

DATA SOURCES: Northern Water, Larimer County, HDR

Wildlife Data Source: USACE and Colorado Parks and Wildlife

NORTHERN INTEGRATED SUPPLY PROJECT



Dewberry

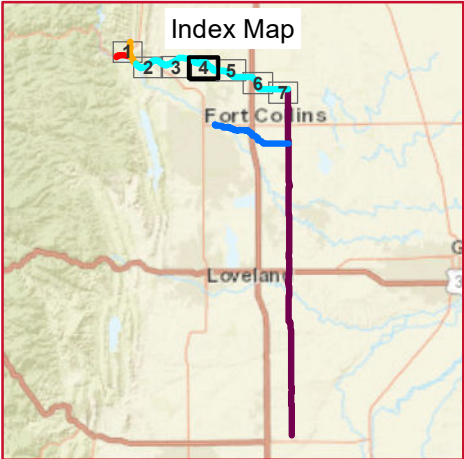


**NORTHERN TIER
SHEET 4 OF 7
MAP SERIES 5D:
WILDLIFE (ELK)**

Legend

- Glade Release/ Poudre Release Pipeline
- Northern Tier Pipeline
- Poudre Intake Pipeline
- County Line Pipeline
- County Boundary
- Railroad
- Stream/Ditch
- Glade Reservoir (future)
- Elk Highway Crossings
- Elk Resident Population Area
- Elk Winter Concentration Area
- Elk Winter Range
- Elk Overall Range

For information about historic/cultural resources, please view the Final Environmental Impact Statement.



Imagery Date: 10/2017

DATA SOURCES: Northern Water, Larimer County, HDR

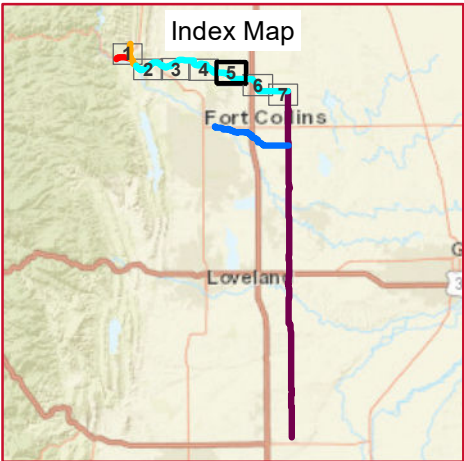


NORTHERN TIER
SHEET 5 OF 7
MAP SERIES 5D:
WILDLIFE (ELK)

Legend

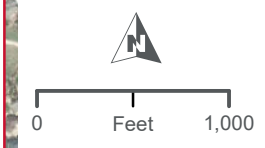
- Glade Release/ Poudre Release Pipeline
- Northern Tier Pipeline
- Poudre Intake Pipeline
- County Line Pipeline
- County Boundary
- Railroad
- Stream/Ditch
- Glade Reservoir (future)
- Elk Highway Crossings
- Elk Resident Population Area
- Elk Winter Concentration Area
- Elk Winter Range
- Elk Overall Range

For information about historic/cultural resources, please view the Final Environmental Impact Statement.



Imagery Date: 10/2017, 10/2018

DATA SOURCES: Northern Water, Larimer County, HDR

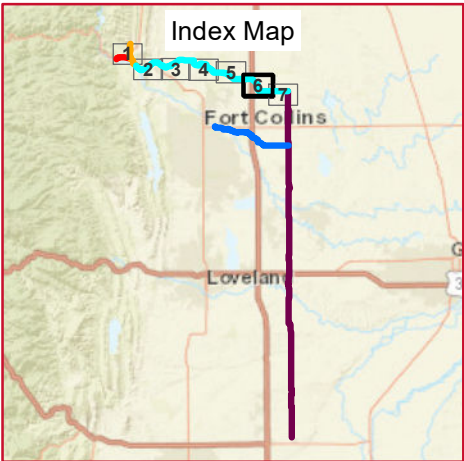


NORTHERN TIER
SHEET 6 OF 7
MAP SERIES 5D:
WILDLIFE (ELK)

Legend

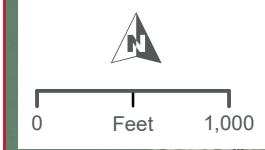
- Glade Release/ Poudre Release Pipeline
- Northern Tier Pipeline
- Poudre Intake Pipeline
- County Line Pipeline
- County Boundary
- Railroad
- Stream/Ditch
- Glade Reservoir (future)
- Elk Highway Crossings
- Elk Resident Population Area
- Elk Winter Concentration Area
- Elk Winter Range
- Elk Overall Range

For information about historic/cultural
resources, please view the Final Environmental
Impact Statement.



Imagery Date: 10/2018

DATA SOURCES: Northern Water, Larimer County, HDR



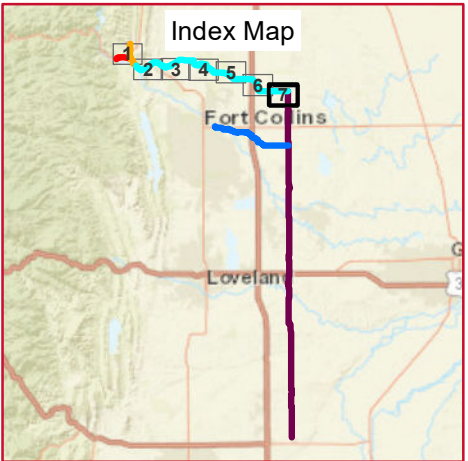


**NORTHERN TIER
SHEET 7 OF 7
MAP SERIES 5D:
WILDLIFE (ELK)**

Legend

- Glade Release/ Poudre Release Pipeline
- Northern Tier Pipeline
- Poudre Intake Pipeline
- County Line Pipeline
- County Boundary
- Railroad
- Stream/Ditch
- Glade Reservoir (future)
- Elk Highway Crossings
- Elk Resident Population Area
- Elk Winter Concentration Area
- Elk Winter Range
- Elk Overall Range

For information about historic/cultural resources, please view the Final Environmental Impact Statement.



Imagery Date: 10/2018

DATA SOURCES: Northern Water, Larimer County, HDR



Dewberry

Wildlife Data Source: USACE and Colorado Parks and Wildlife

NORTHERN INTEGRATED SUPPLY PROJECT