



Larimer County Analysis – Technical Memorandum No. 4 U.S. Highway 287 Relocation

Prepared for:
**Larimer County in accordance with the
Memorandum of Understanding between
Larimer County and Northern Water**

Prepared by:
**Northern Integrated Supply Project
Water Activity Enterprise
Northern Colorado Water Conservancy District**

June 2019

CONTENTS

1.0	HIGHWAY 287 RELOCATION	2
2.0	SUMMARY	4

LIST OF FIGURES

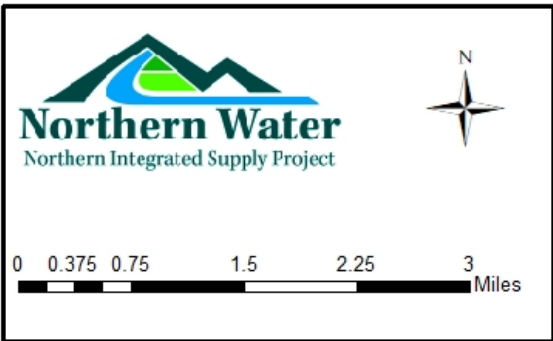
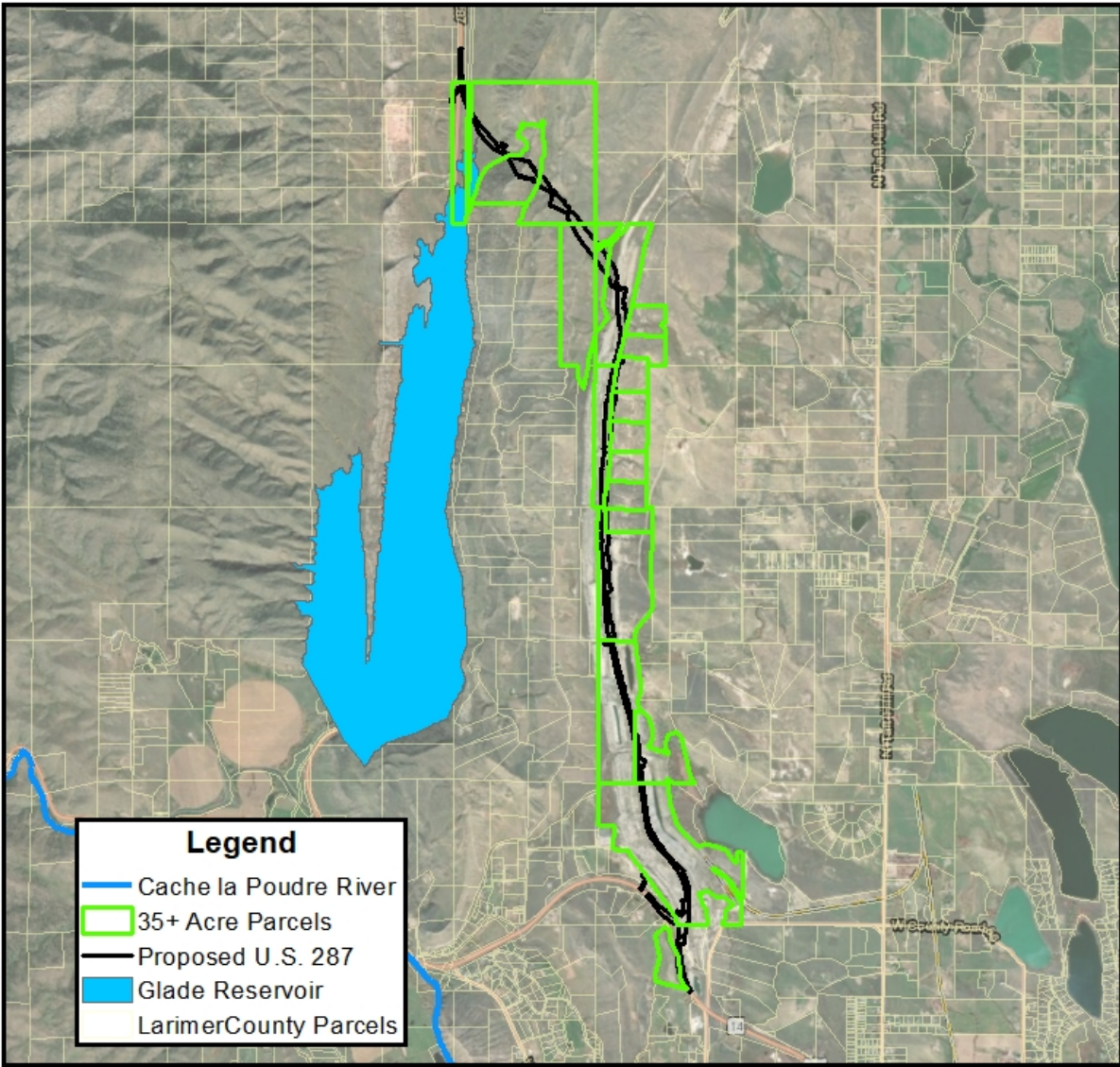
Figure 1:	Highway 287 Realignment	3
-----------	-------------------------------	---

1.0 HIGHWAY 287 RELOCATION

Due to the Glade Reservoir footprint, about 7 miles of US Highway 287 north of Ted’s Place is being relocated. A route study for this relocation has been completed as part of the development of the project’s environmental impact statement. As part of that process, the new route and has been presented to the public for review and comment at an alternatives screening open house and as part of three environmental impact statement public comment periods in 2018, 2015, and 2019 and two associated sets of public hearings in 2008, and 2015.

The approximate route is shown below in Figure 3. The highway will be relocated as a two-lane arterial with room for a future four lane section. The design includes a large rock cut through a hogback. Preliminary design of this highway is ongoing since construction must be completed prior to the construction of Glade Reservoir to avoid a road closer and associated displacement of traffic onto other roads.

NORTHERN INTEGRATED SUPPLY PROJECT
TECHNICAL MEMORANDUM NO. 4 – U. S. HIGHWAY 287 RELOCATION



Vicinity Map

Figure 1: Highway 287 Realignment

Northern Water is working with Colorado Department of Transportation (CDOT) for a multitude of efforts on the relocation project including the design, bid, and construction processes, procedures, and implementation. Some of these items include environmental permitting in conjunction with the Corps permitting requirements, utility relocations that may be necessary, design to CDOT standards, stormwater requirements, etc.

A portion of the parcels crossed for this highway alignment are subdivided into 35-acre parcels. A 35-acre plot is exempt from subdivision regulations and can typically receive less restrictive permitting for a well. To maintain the full 35-acres, Northern Water has discussed the potential of utilizing easements instead of a full land purchase for the 35-acre parcels. Additionally, the 35-acre parcels are primarily undeveloped with limited access from an old haul road. Access along the new highway for all parcels will be coordinated with the property landowners, CDOT, and the designers. The preliminary approach for the access road will be a frontage road that would provide a single point of access to the highway for multiple land owners.

2.0 SUMMARY

US Highway 287 north of Ted's Place is being relocated east of Glade Reservoir. This route and alternatives had been reviewed as part of the project's environmental impact statement, which incorporated an open house, three rounds of public review, and two sets of public hearings. As design continues, Northern Water will work with CDOT, the property owners, and Larimer County to ensure proper access for the affected property owners is in place. The preliminary approach for the access road will be a frontage road that would provide a single point of access to the highway for multiple land owners.