

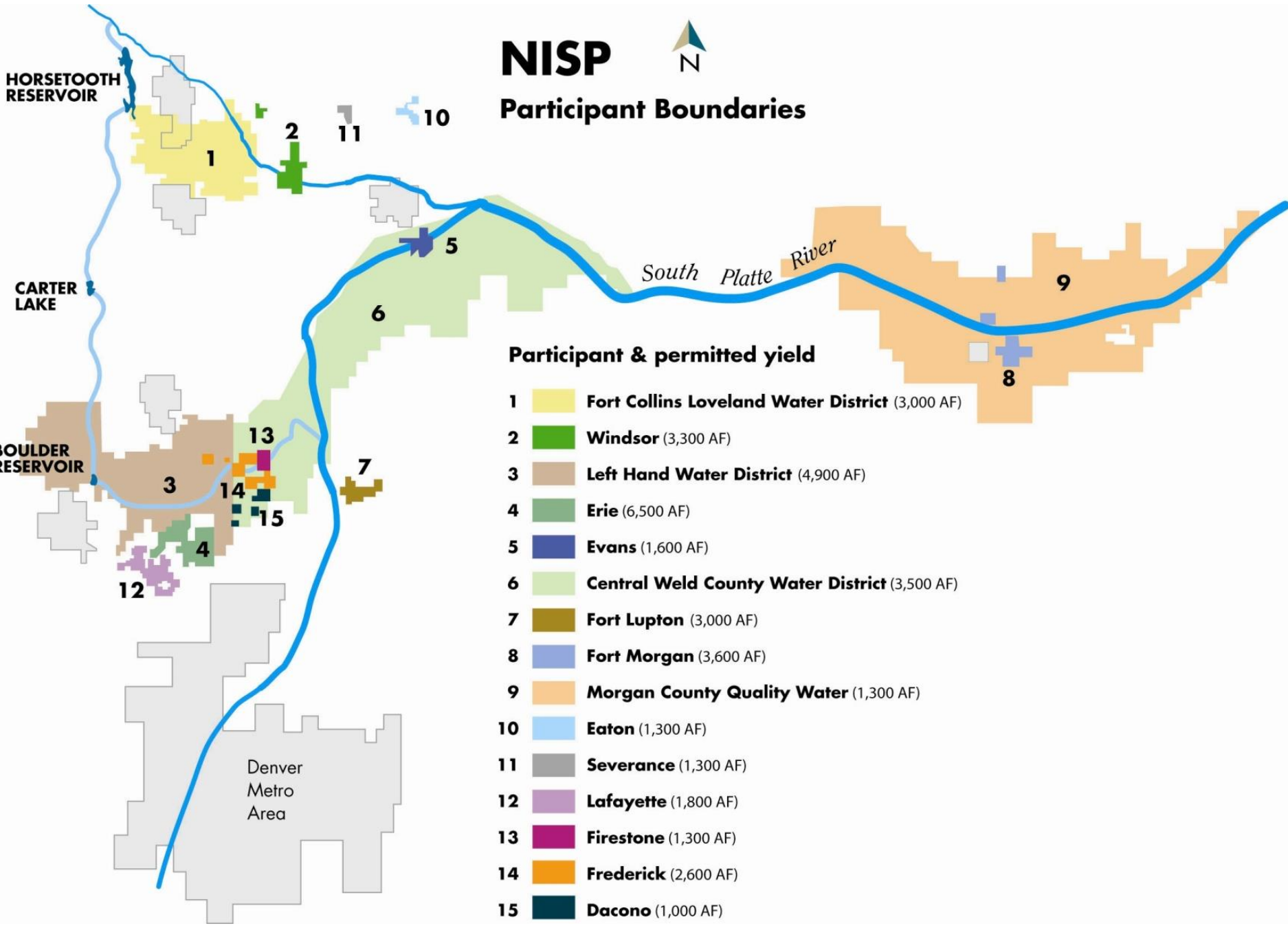
NISP OVERVIEW

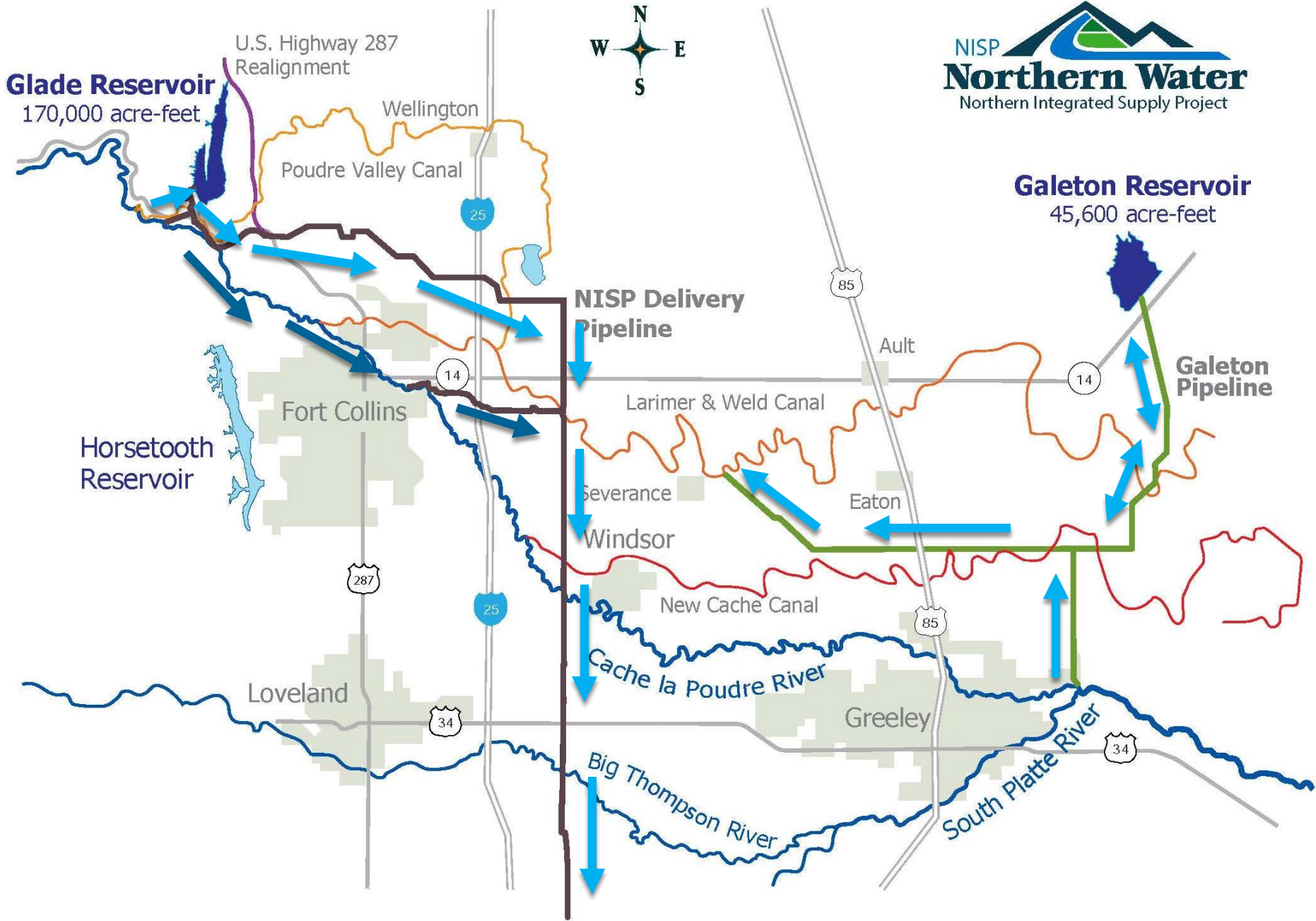
NISP IGA - July 24 Work Session



Final EIS Purpose & Need Statement:

*To provide the Project Participants with approximately **40,000 acre-feet of new reliable municipal water supply annually** through a regional project coordinated by the District, which will meet a portion of the Participants' current and reasonably projected future additional water supply needs.*





2002
NISP Participant
Group Formed

2008
Draft EIS

2016-2017
Conveyance (Water
in Poudre) Added

2018
Reservoir Release
Bill

2019
Record of Decision



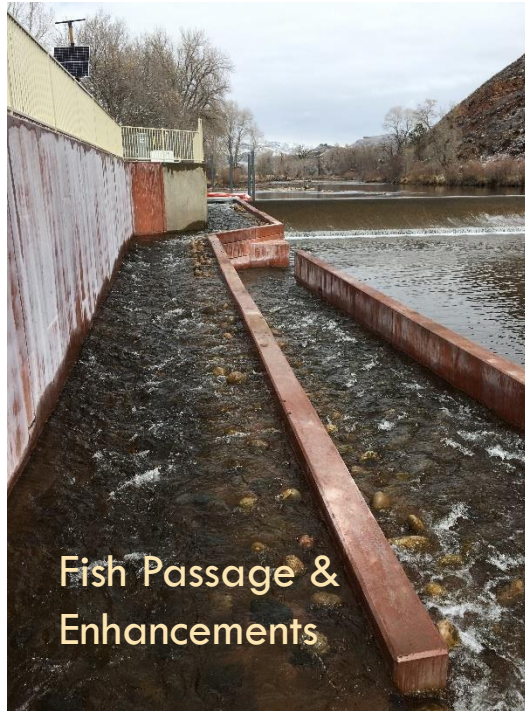
2004
NEPA Begins

2015
Supplemental DEIS

2017
State F&W ME Plan

2018
Final EIS

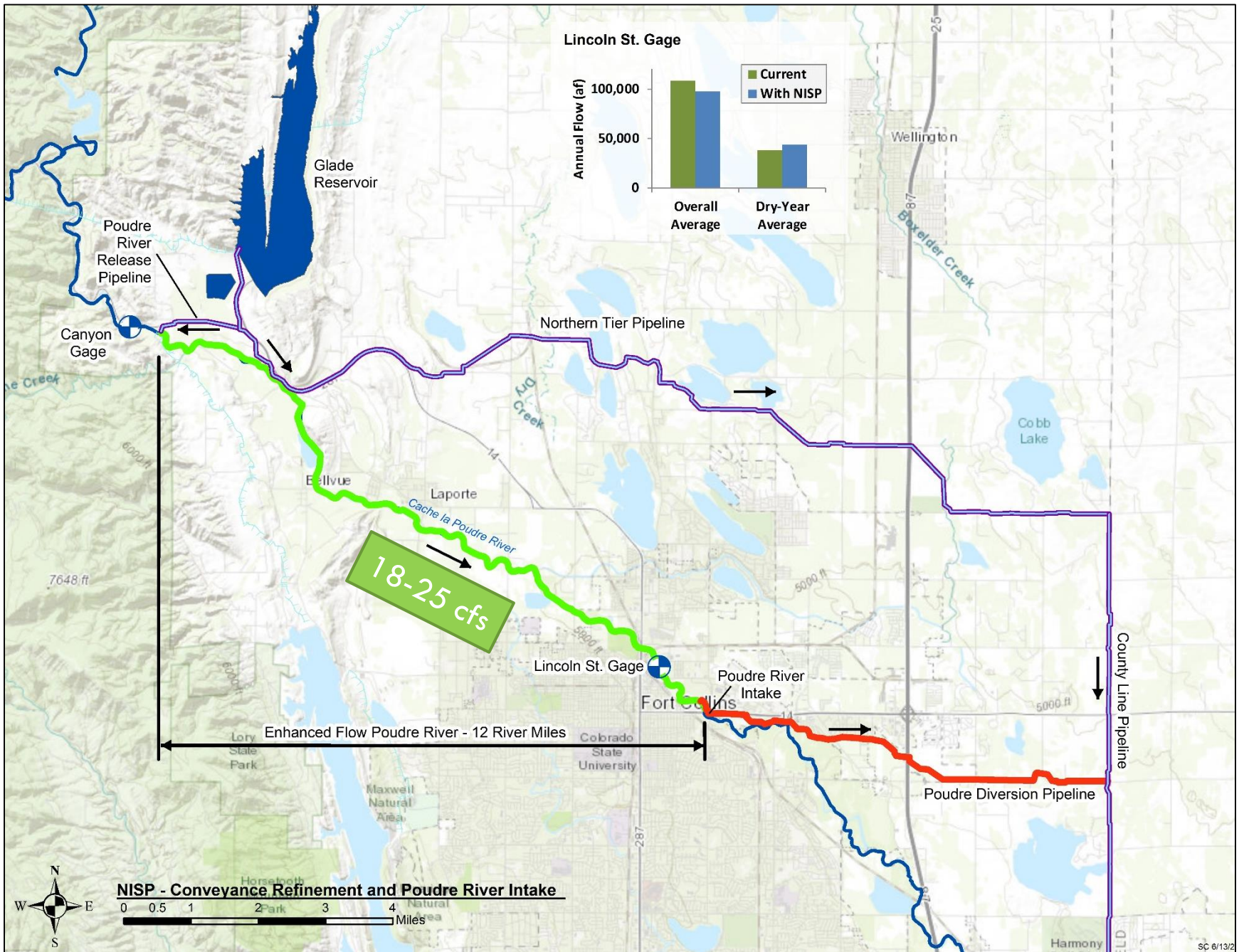
Fish and Wildlife Mitigation and Enhancement Plan



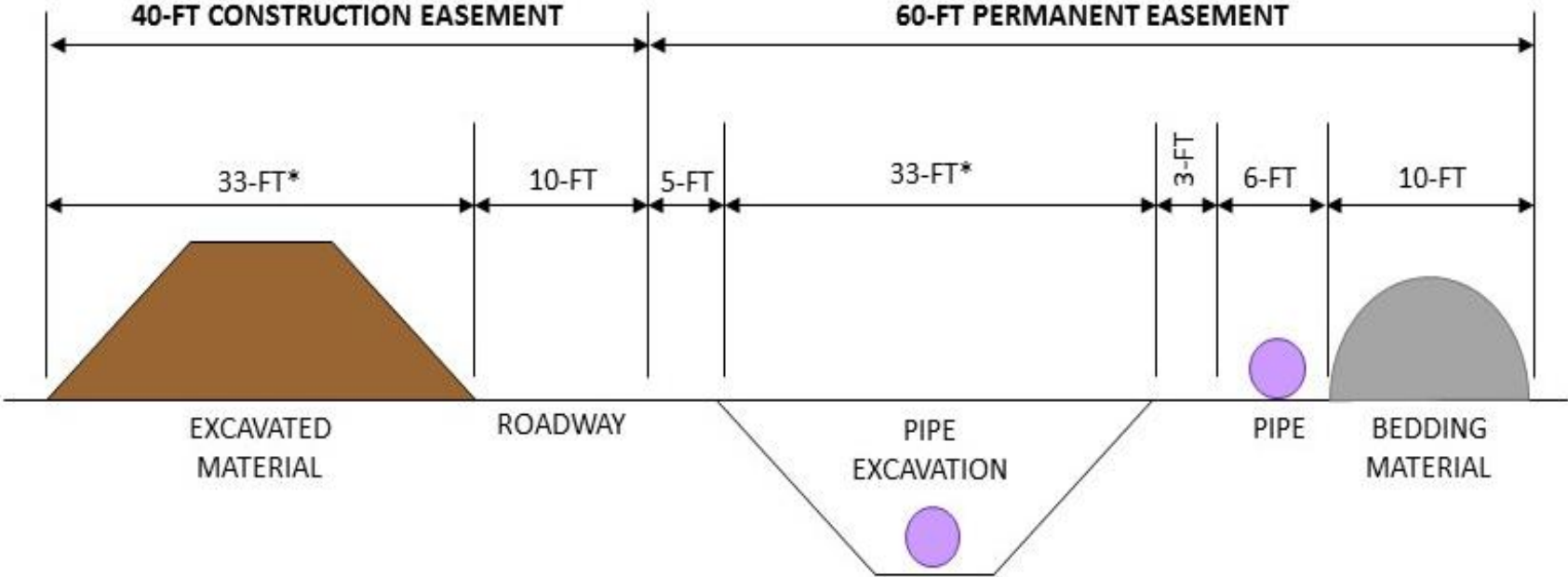
WATER PIPELINES & CONVEYANCE

NISP IGA - July 24 Work Session



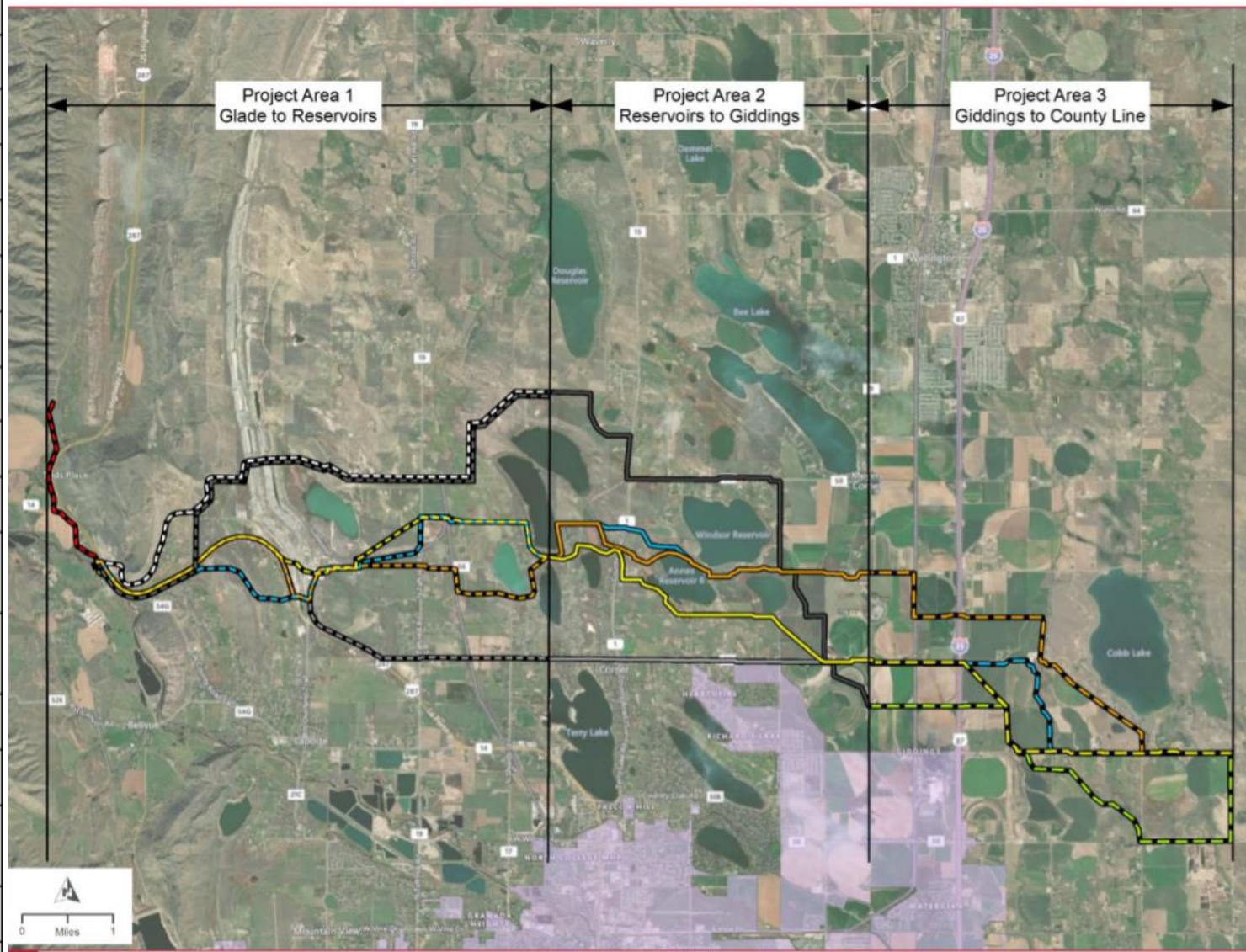


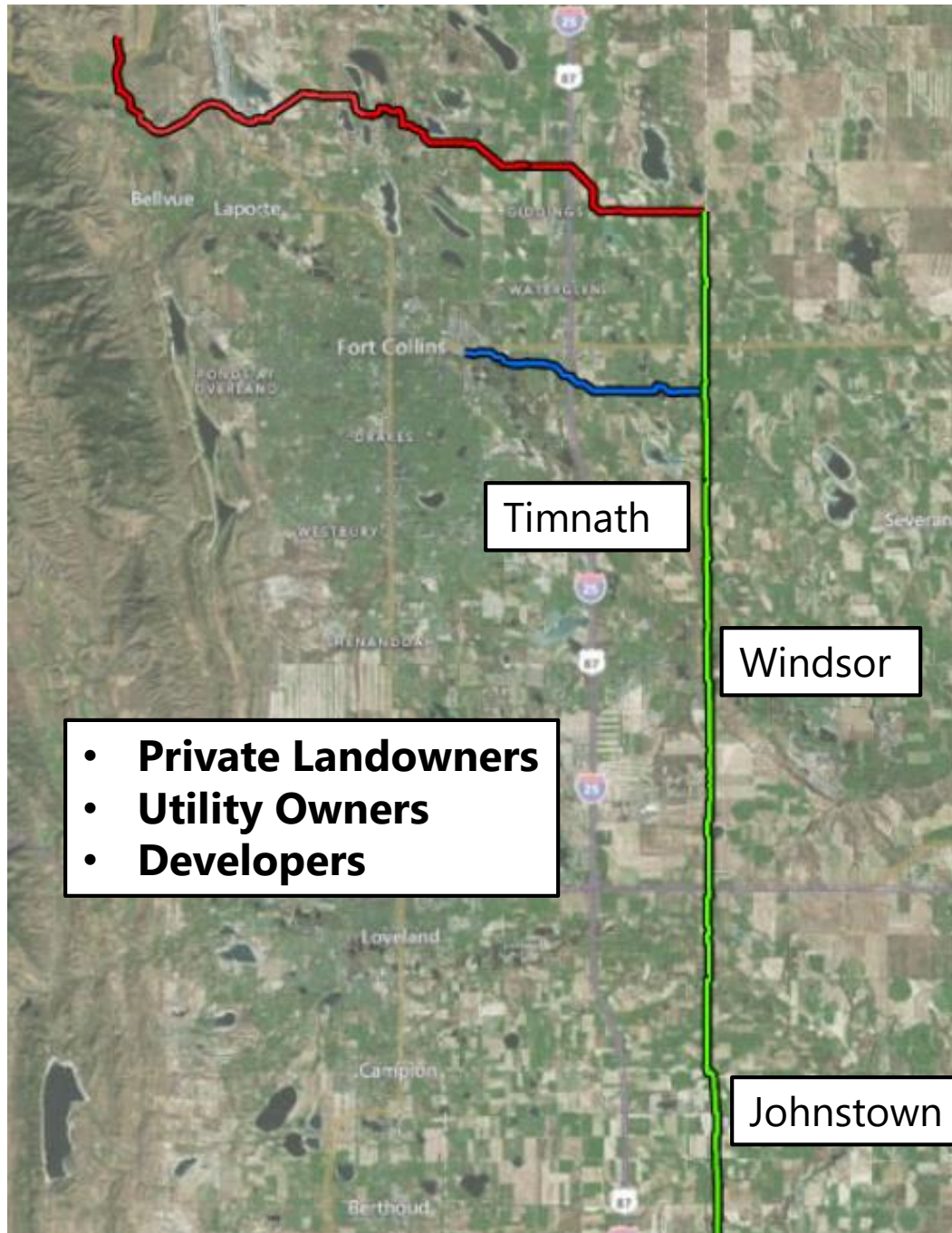
Northern Integrated Supply Project PRELIMINARY 100-ft Easement for Single 48-inch Pipeline



Evaluation Criteria

- Capital Cost
- Conduit Length
- Easement Difficulty/Cost
- Use of Right-of-Way
- Land Owner Impact
- Proximity to Occupied Dwelling
- Environmental Impacts
- Existing Utilities
- Hazardous/Permitted Crossings
- Surface and Street Impacts
- Traffic Impacts
- Impacts to Water Storage Reservoirs
- Construction Duration and Relative Constructability
- Required Trenchless Crossings
- Development Pressure
- Operation and Maintenance (O&M) Access
- O&M Requirements
- Natural Area Impacts





- **Private Landowners**
- **Utility Owners**
- **Developers**



Reclamation

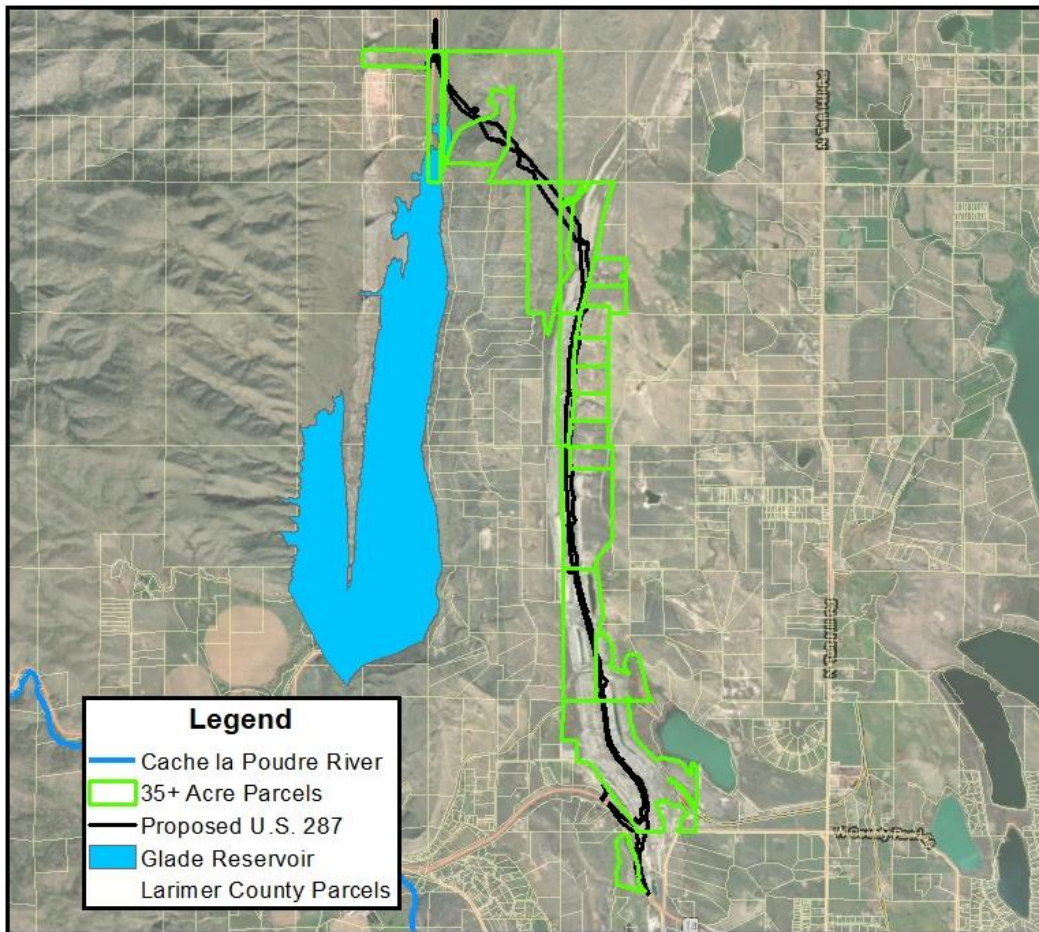


U.S. HWY. 287 RELOCATION

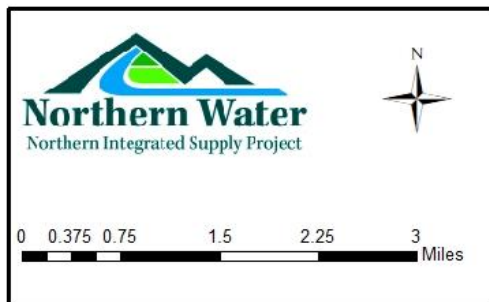
NISP IGA - July 24 Work Session



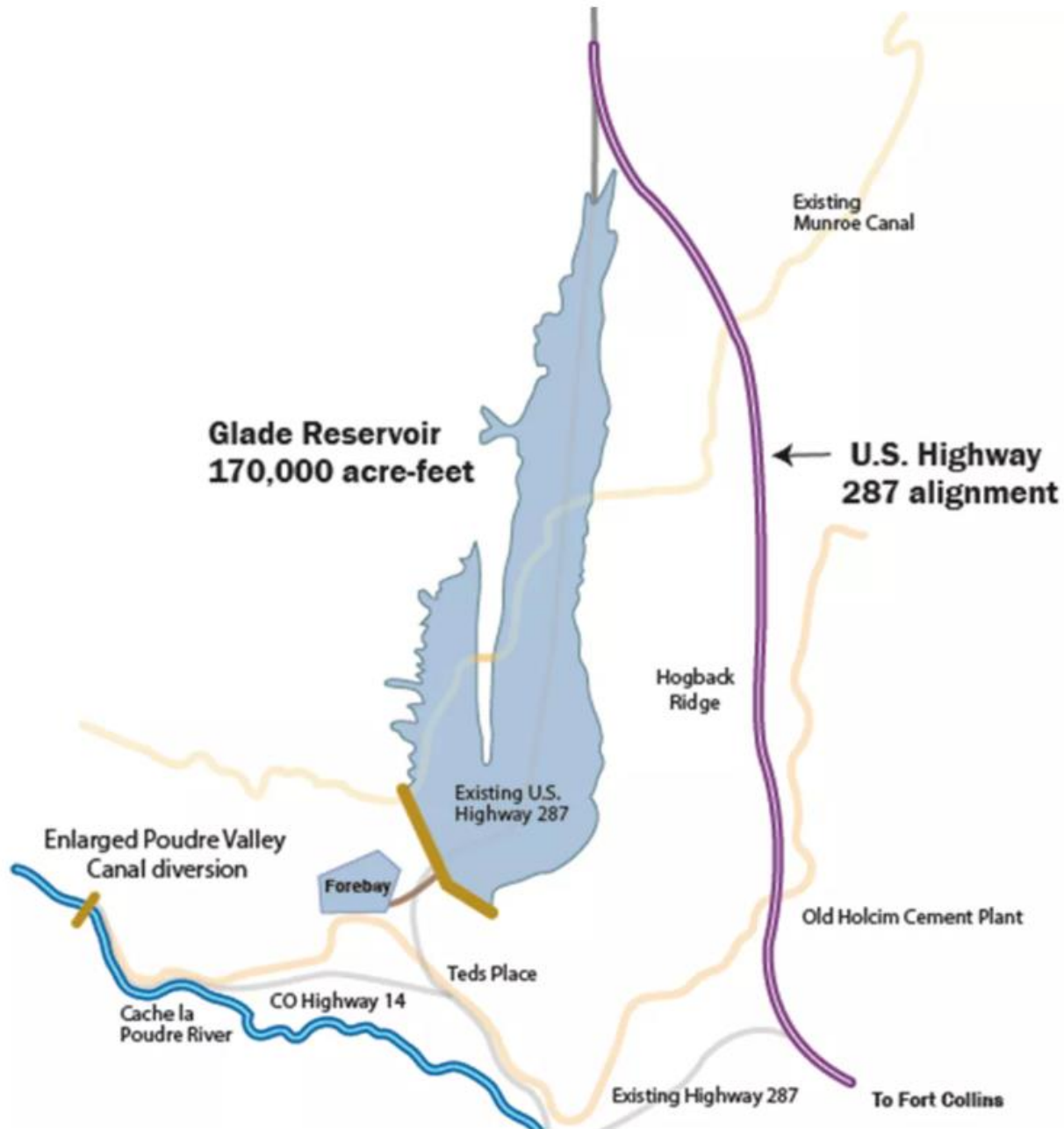




Highway 287 Realignment



Vicinity Map



GLADE RESERVOIR RECREATION

NISP IGA - July 24 Work Session



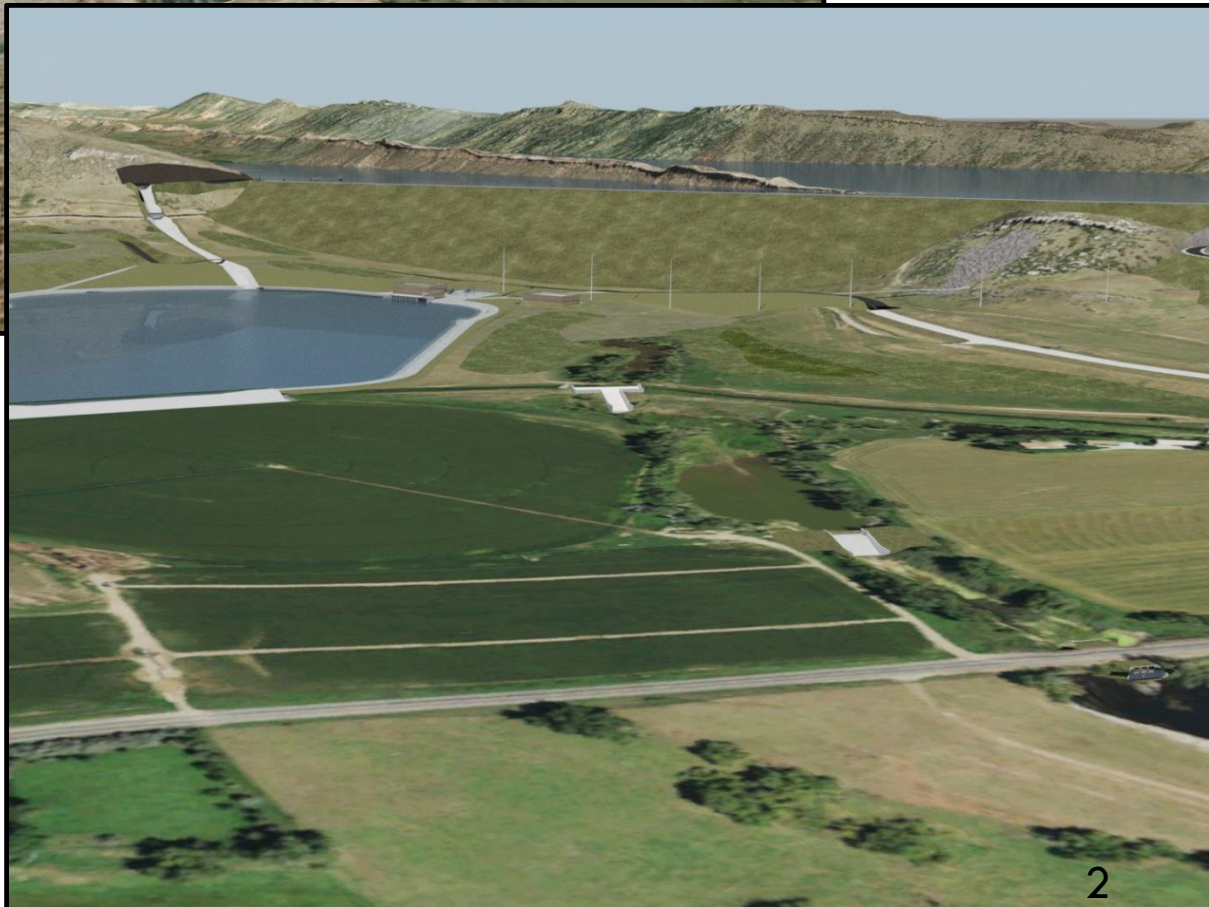


Photo by Rebecca B.



Photo by Dave Marvin



Photo by Word Press



Photo by Logan Simpson



Photo by Charlie Johnson



**Larimer County Analysis – Technical
Memorandum No. 5
Glade Reservoir Recreation**

Prepared for:
Larimer County in accordance with the
Memorandum of Understanding between
Larimer County and Northern Water

Prepared by:
Northern Integrated Supply Project
Water Activity Enterprise
Northern Colorado Water Conservancy District

June 2019



Photo by Pam Cramer



**CONCEPTUAL GLADE RECREATION
FACILITIES PLAN**

Northern Integrated Supply Project

PREPARED FOR

Northern Water

24 MAY 2019

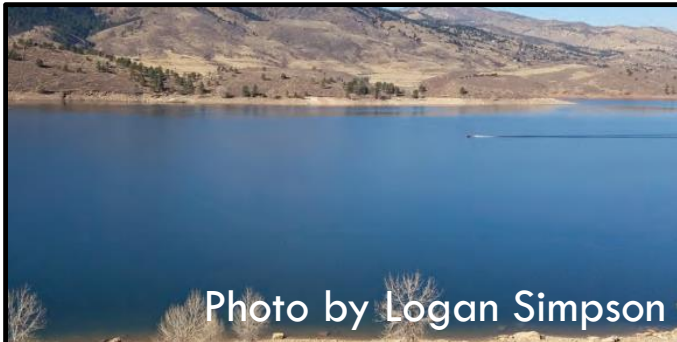
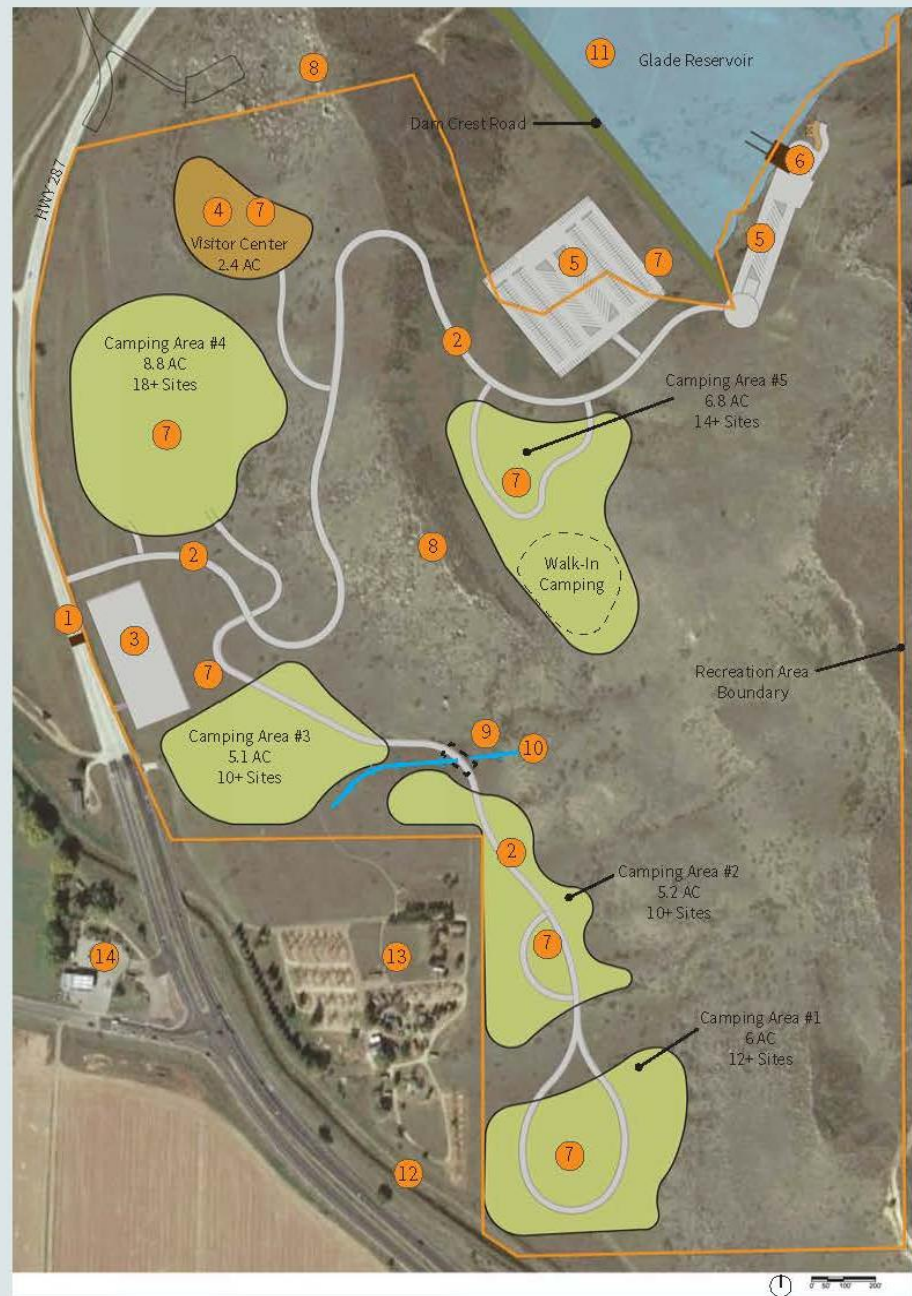


Photo by Logan Simpson





- 1 Entry Station
- 2 Access Road
- 3 Poudre Canyon Public Parking 100-200 spaces
- 4 Visitor Center-25 Parking Spaces
- 5 Day Use/Trailer Parking 200-300 Car Spaces+32 Truck/Trailer
- 6 Boat Ramp-4 Lane
- 7 Restrooms
- 8 Escarpment
- 9 Box Culvert Crossing
- 10 Intermittent Drainage Channel
- 11 Cool Water Fishery
- 12 Poudre Valley Canal
- 13 Fort Collins/ Poudre Canyon KOA
- 14 Ted's Place
- 15 North Trailhead
- 16 Hiking Trail Connecting North Trailhead to Recreation Area



NOTES:
 1) Restrooms to be developed by managing agency.
 2) Rough grading of campground to be provided by NISRP.
 3) Design is conceptual and subject to change as design process progresses.

Present Commitments Cost

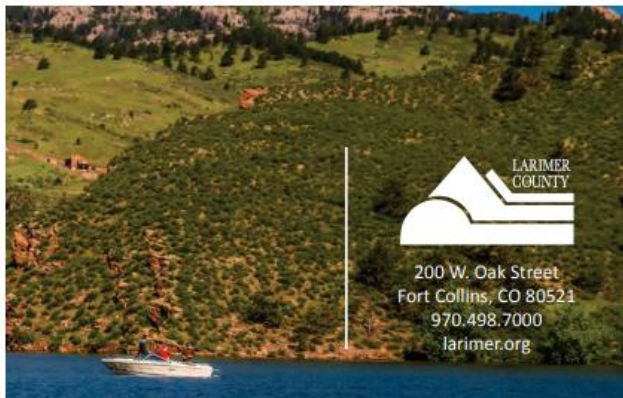
Item	Cost
Visitor Center	\$940,000
Paved Road with Guardrail	\$1,500,000
Foothills Recreation Area (170 acres)	\$500,000
Boat Ramp	\$500,000
Campground Rough Grading	\$1,000,000
Upper Parking Lot	\$500,000
North Parking Lot	\$50,000
Lower Parking Lot	\$40,000
Cool-water Fishery	\$4,070,000
TOTAL	\$9,100,000

2017

RESERVOIR PARKS MASTER PLAN

LARIMER COUNTY DEPARTMENT OF NATURAL RESOURCES

DECEMBER 2017 FINAL DRAFT



200 W. Oak Street
Fort Collins, CO 80521
970.498.7000
larimer.org

Glade Reservoir is a
“Future Park Strategy”



Photo from 2017 RPMP



Photo from 2017 RPMP

Glade could provide over 80% of RPMP Desired Activities at Reservoirs



Photo by Charlie Johnson



Photo by Walt Hubis

Photo from 2017 RPMP

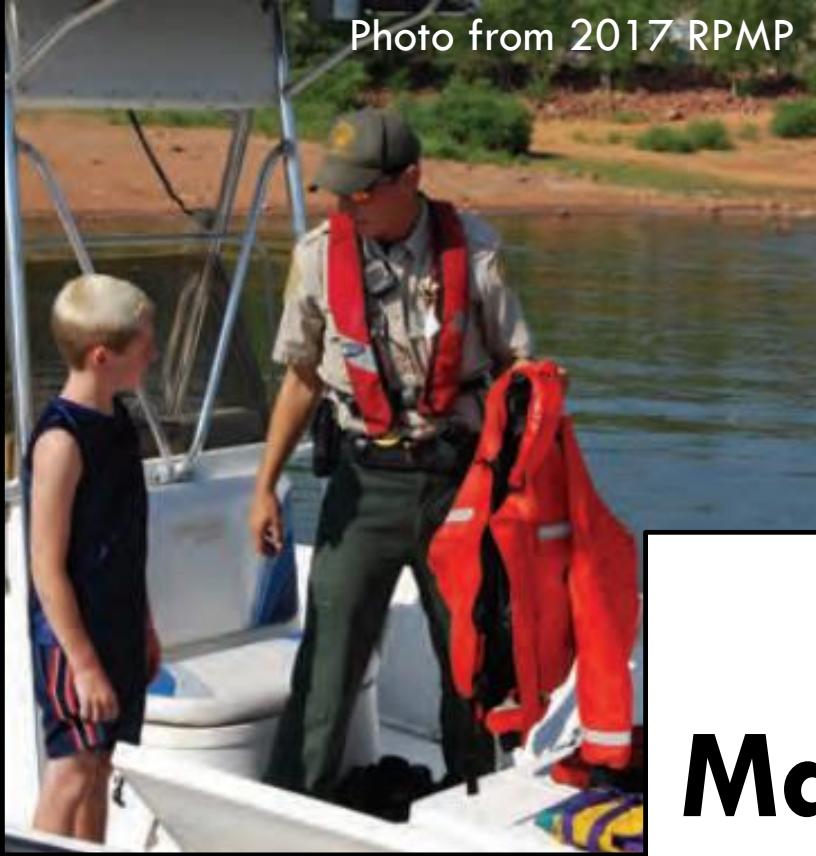


Photo from 2017 RPMP



Facility Management



Photo from 2017 RPMP



Photo from 2017 RPMP 9



Benefits to Larimer County



Photo by Dana Chapman



Photo from 2017 RPMP



Photo by Stoney Davalos

Photo by Sue Burke