

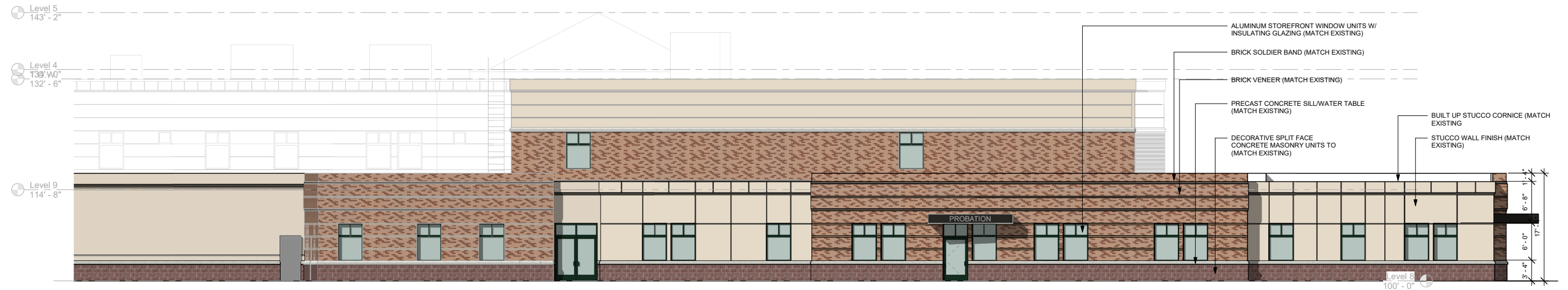


POLICE & COURTS BUILDING EXPANSION | 2018
RENDERING

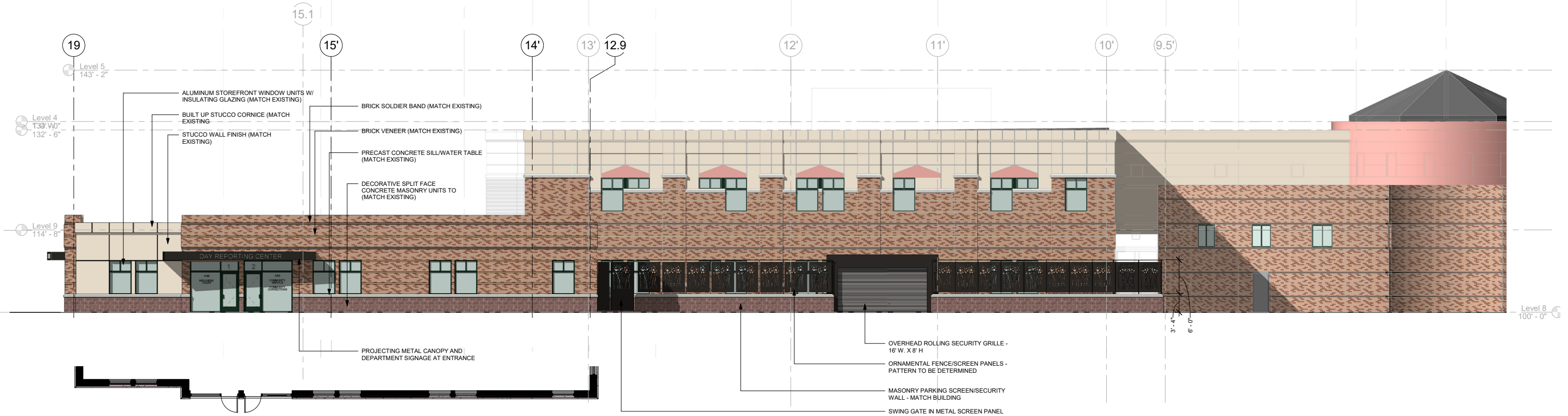




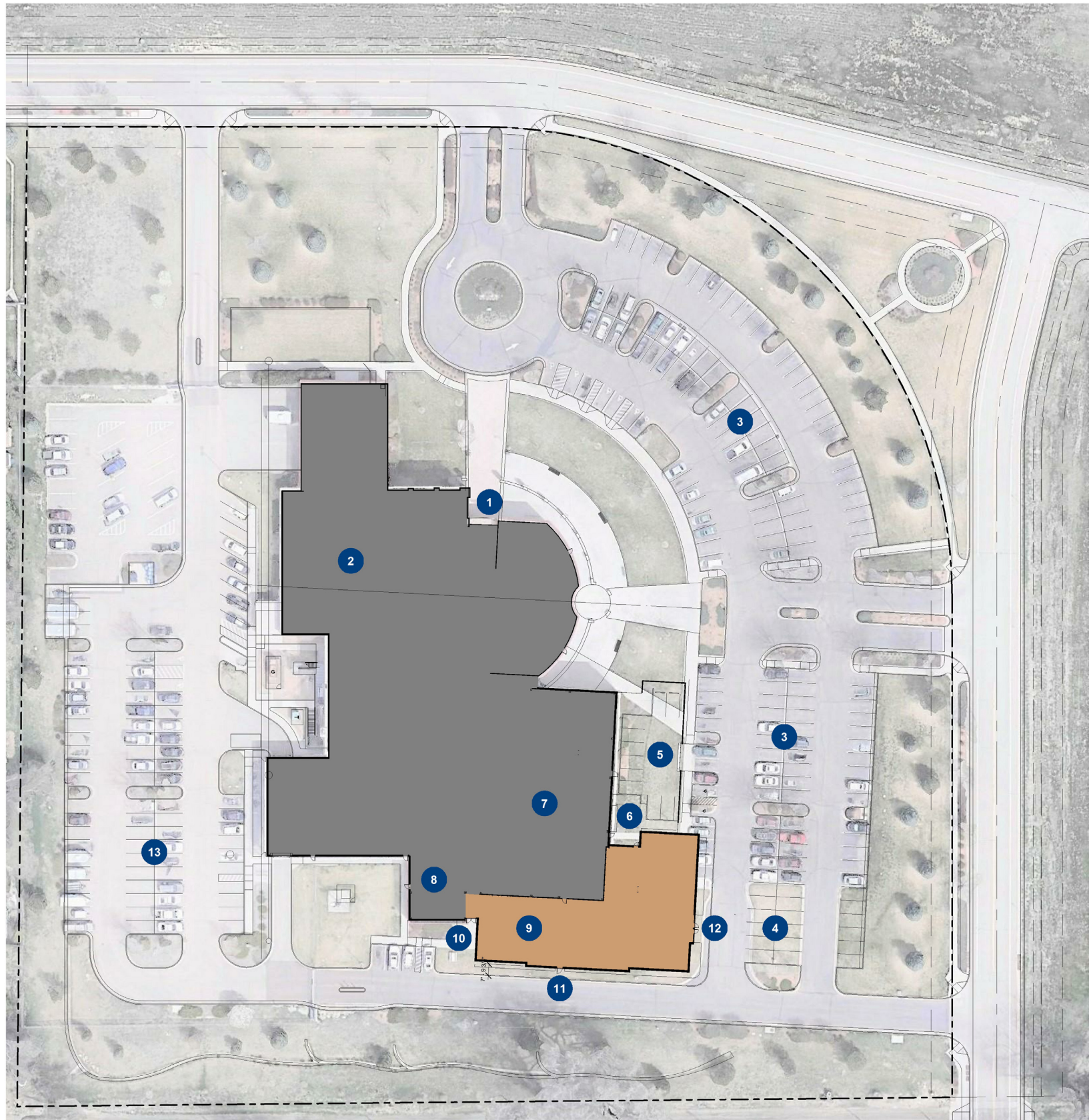
POLICE & COURTS BUILDING EXPANSION | 2018
RENDERING



1 SOUTH BUILDING ELEVATION
1/8" = 1'-0"



2 EAST BUILDING ELEVATION
1/8" = 1'-0"



KEYED NOTES

- 1 EXISTING MAIN BUILDING ENTRY
- 2 EXISTING LOVELAND POLICE SERVICES
- 3 EXISTING PUBLIC PARKING
- 4 EXPANDED PUBLIC PARKING (18 SPACES)
- 5 NEW SECURED PARKING W/ MASONRY AND ORNAMENTAL SCREENWALL, VEHICLE & PEDESTRIAN GATES (10 SPACES)
- 6 NEW LARIMER COUNTY STAFF ENTRIES AND AMENITY AREA
- 7 EXISTING 8TH JUDICIAL DISTRICT COURTS & CLERK
- 8 EXISTING 8TH JUDICIAL DISTRICT PROBATION
- 9 EXPANDED 8TH JUDICIAL DISTRICT PROBATION, DAY REPORTING & AIM/WELLNESS COURT
- 10 RELOCATED EMERGENCY EGRESS FROM COURTS PUBLIC CORRIDOR - NO EXTERIOR ACCESS
- 11 NEW EGRESS DOOR FROM PROBATION AND AFTER HOURS ACCESS TO PROBATION PROGRAMS
- 12 NEW PUBLIC ENTRANCE TO DAY REPORTING & AIM/WELLNESS COURT
- 13 EXISTING SECURED PARKING

EXISTING BUILDING
(APPROX. 95,700, 2 STORY)

BUILDING EXPANSION
(APPROX. 9,500 SF, 1 STORY)