



LARIMER COUNTY

# 2019 BUDGET [BRIEF]

Larimer County's 2019 adopted operating budget is \$260,850,515. The total adopted budget, with non-operational governmental accounts, capital projects and disaster recovery costs is \$495,524,415.

## LARIMER COUNTY BOARD OF COUNTY COMMISSIONERS



(From left) **Tom Donnelly**, District 3 ;  
**Steve Johnson**, District 2 ; **John Kefalas**, District 1

## COMMISSIONERS MESSAGE

Larimer County works to get the most value for our citizens in the County Budget. Through careful, prudent fiscal management, we opened the Loveland Campus in 2018 to provide services to Southern Larimer County with no new taxes or debt. A major effort in 2019 will be an expansion of the fleet shop, fairgrounds and the county jail within the existing budget. Funding our five-year facilities plan will ensure that we meet the needs of today and future generations in transportation, law enforcement, emergency response, public health, human services and land use planning.

## LARIMER COUNTY ELECTED OFFICIALS



**Bob Overbeck**  
Assessor



**Angela Myers**  
Clerk &  
Recorder



**James A.  
Wilkerson IV M.D.**  
Coroner



**Cliff Riedel**  
District  
Attorney



**Justin Smith**  
Sheriff



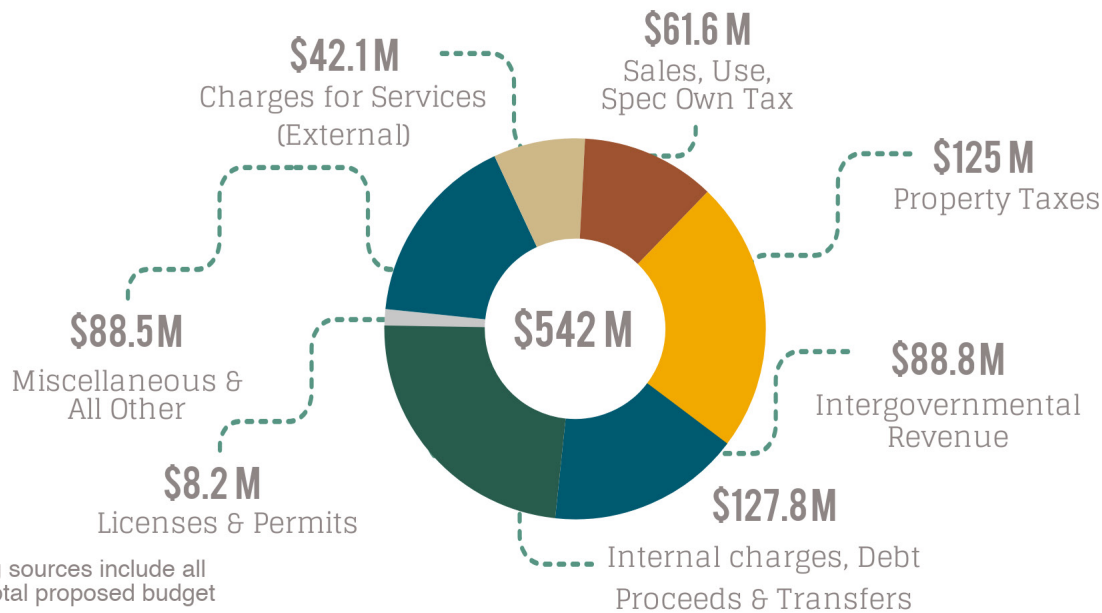
**Chad  
Washburn**  
Surveyor



**Irene Josey**  
Treasurer

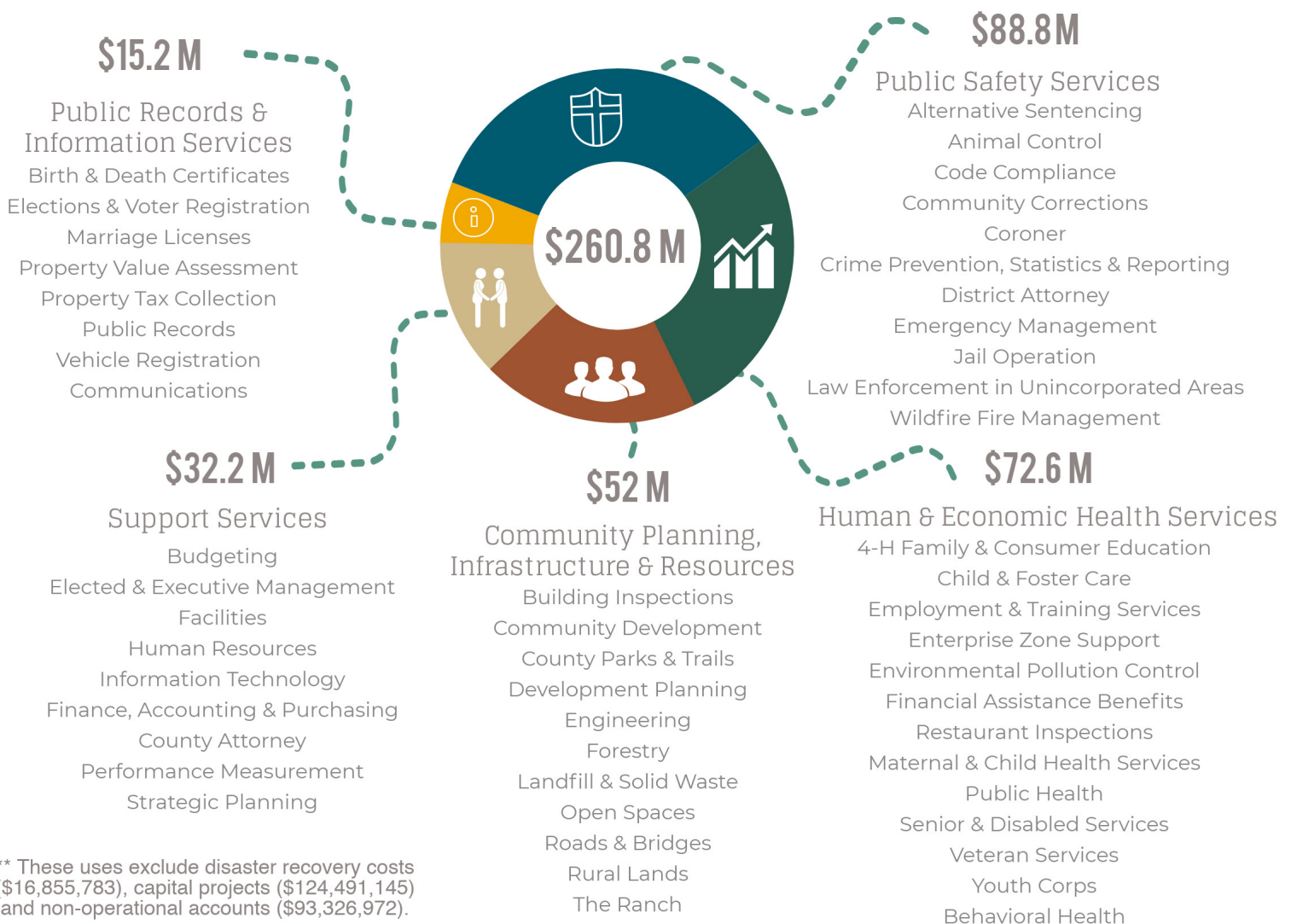


## 2019 ADOPTED SOURCES OF FUNDS\*



\* These funding sources include all revenue in the total proposed budget

## 2019 ADOPTED USES OF FUNDS\*\*



\*\* These uses exclude disaster recovery costs (\$16,855,783), capital projects (\$124,491,145) and non-operational accounts (\$93,326,972).



## 2019 TAX LEVY SUMMARY

The tax impact on the owner of a \$411,119 home (representing no increase from the prior-year value as 2019 is a non-reappraisal year), with a taxable value of \$29,601 is expected to be a \$9, or 2 percent increase in the County's share of property tax in 2019.

Start with your residential home's appraised value.

**Average Appraised Value**  
**\$411,119**

Then, determine your property's assessed value (Appraised value x 7.20%)

**\$411,119 X 7.20%**  
**= \$29,601**

Next, calculate your annual property tax rate (Assessed value x Total Mill Levy / 1000)

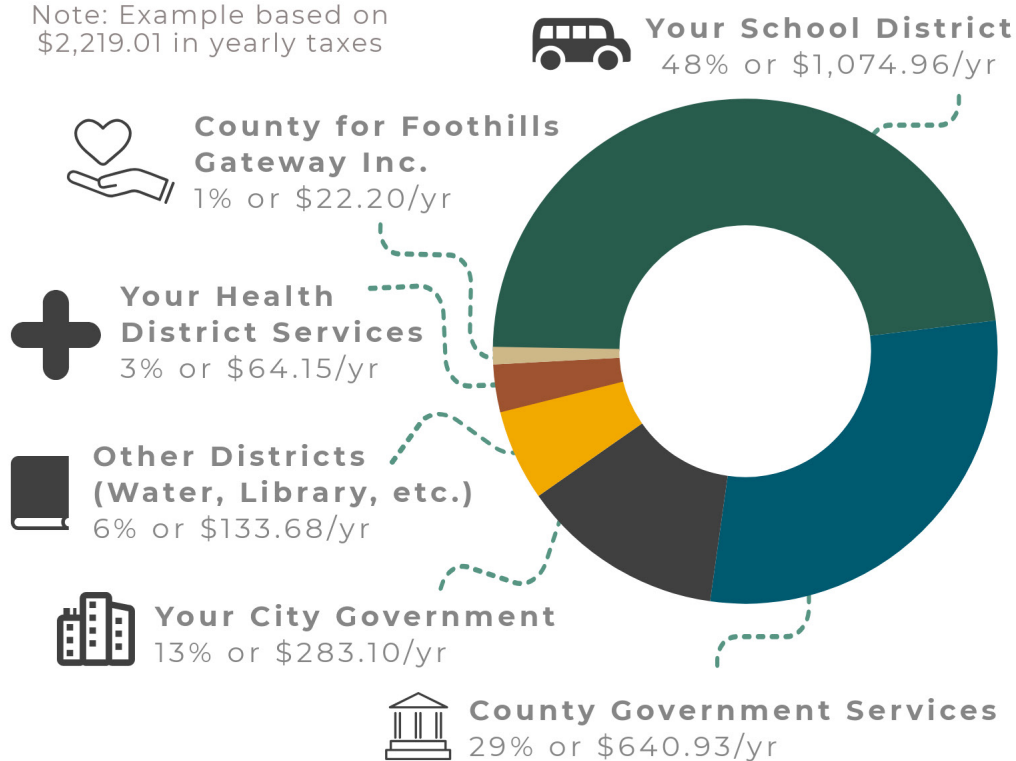
**\$29,601 X 74.965**  
**mills/ 1000 = \$2,219.01**

Larimer County's share is 29% =  
**\$640.93/year**

\*\*\* Mill levies are set by each taxing authority. The mill levies applicable to your property tax may differ from this example, which represents a home in Loveland.

### WHERE DOES YOUR PROPERTY TAX MONEY GO? \*\*\*

Note: Example based on \$2,219.01 in yearly taxes



### MILL LEVY OF TAXING AUTHORITY \*\*\*

Taxing Authority	Mill Levy
School District	36.315
County Government Services +	21.571
County Abatements Levy +	0.082
Foothills Gateway Inc. +	0.750
County Government Total	22.403
City Government Services	9.564
Other Services (Water, Library, etc.)	4.516
Health/District Services	2.167
<b>Total Mill Levy</b>	<b>74.965</b>

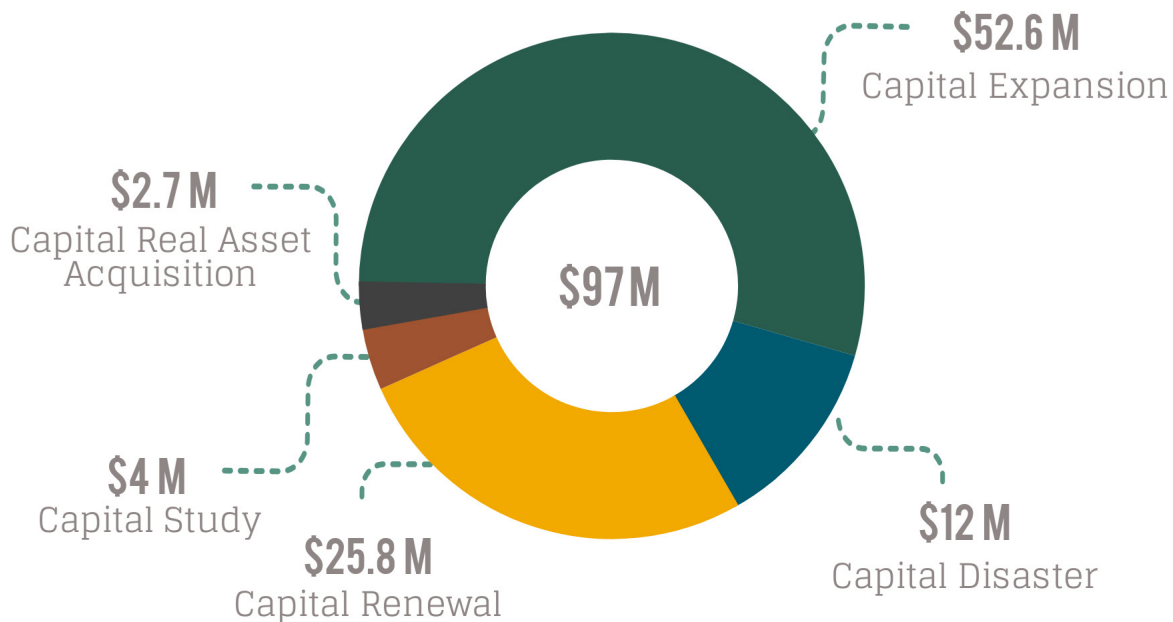




## CAPITAL PROJECT HIGHLIGHTS

## 2019 CAPITAL PROJECTS BY TYPE

(includes disaster projects)



## FUNDED BY GENERAL FUND PROPERTY TAX

EXPANSION	RENEWAL
Police & Courts - \$5 M	IT Replacement - \$5.7 M
I-25 Expansion - \$2 M	Fleet Replacement - \$3.3 M
New Coroner Facility - \$1.8 M	Facilities Replacement - \$1.2 M

## FUNDED BY OTHER SOURCES

EXPANSION	RENEWAL	AQUISITION	DISASTER
Fleet Satellite Shops - \$14 M	County Road Maintenance - \$6.8 M	Open Space Acquisition - \$2 M	CR44H - \$6 M
Jail Expansion - \$8.5 M	Business Software Replacement - \$4.8 M	Regional Trails - \$0.5 M	CR47 - \$5 M
Behavioral Health Facility - \$2.8 M	Fleet Replacement - \$3 M		Big Thompson Bridges - \$1 M