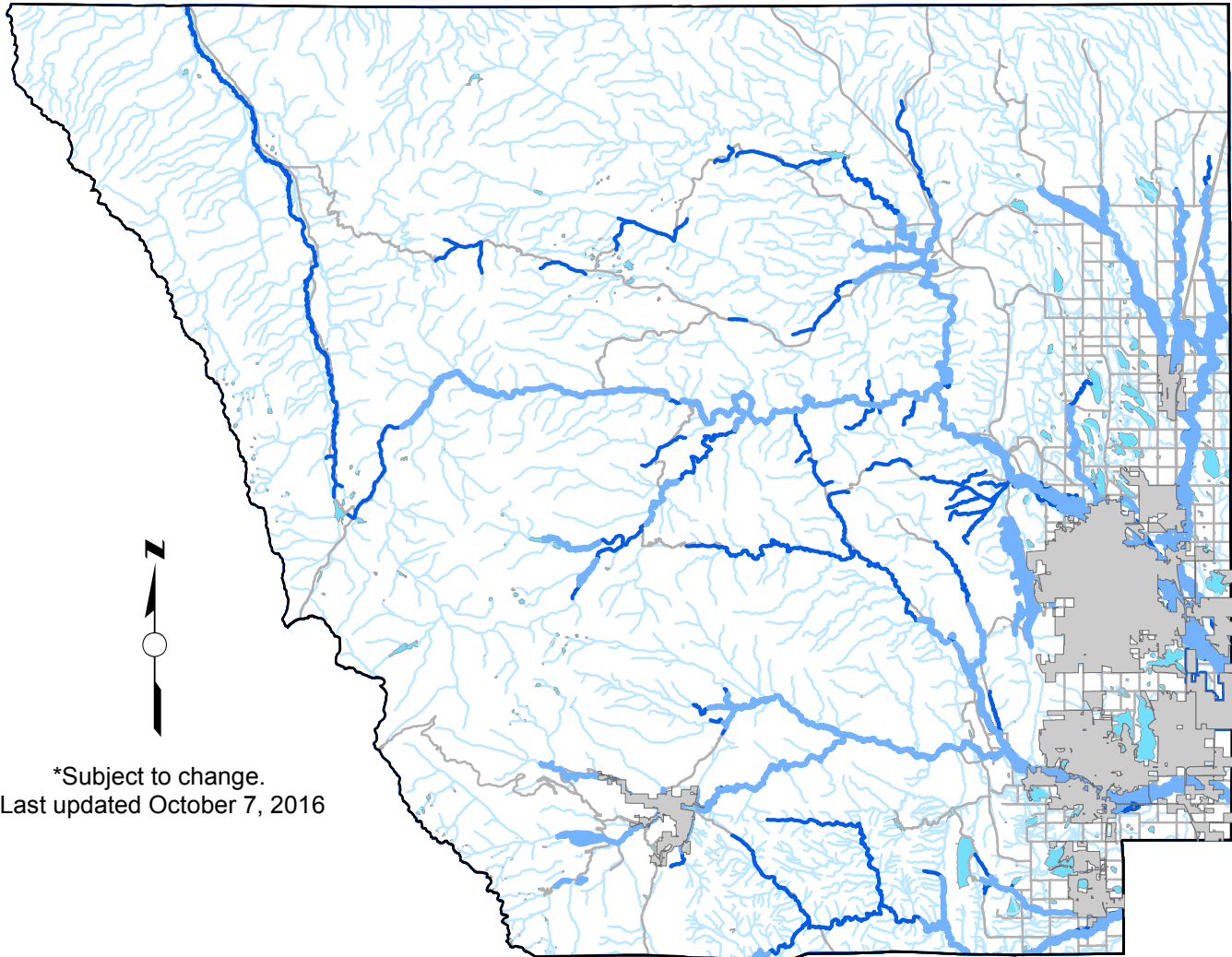




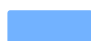


Major Drainage Area of Interest Map

Permit Requirements for Bridges and Culverts

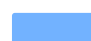



*Subject to change.
Last updated October 7, 2016

Permits are required for BRIDGES
in the following areas:

-  Regulatory Floodplains
-  Other Significant Drainages
-  Other Rivers and Streams

Permits are required for CULVERTS
in the following areas:

-  Regulatory Floodplains
-  Other Significant Drainages

Stream Crossing Guidance, Technical Requirements, Permit Process
and Submittal Requirements can be found at:
larimer.org/engineering/floodplains.htm