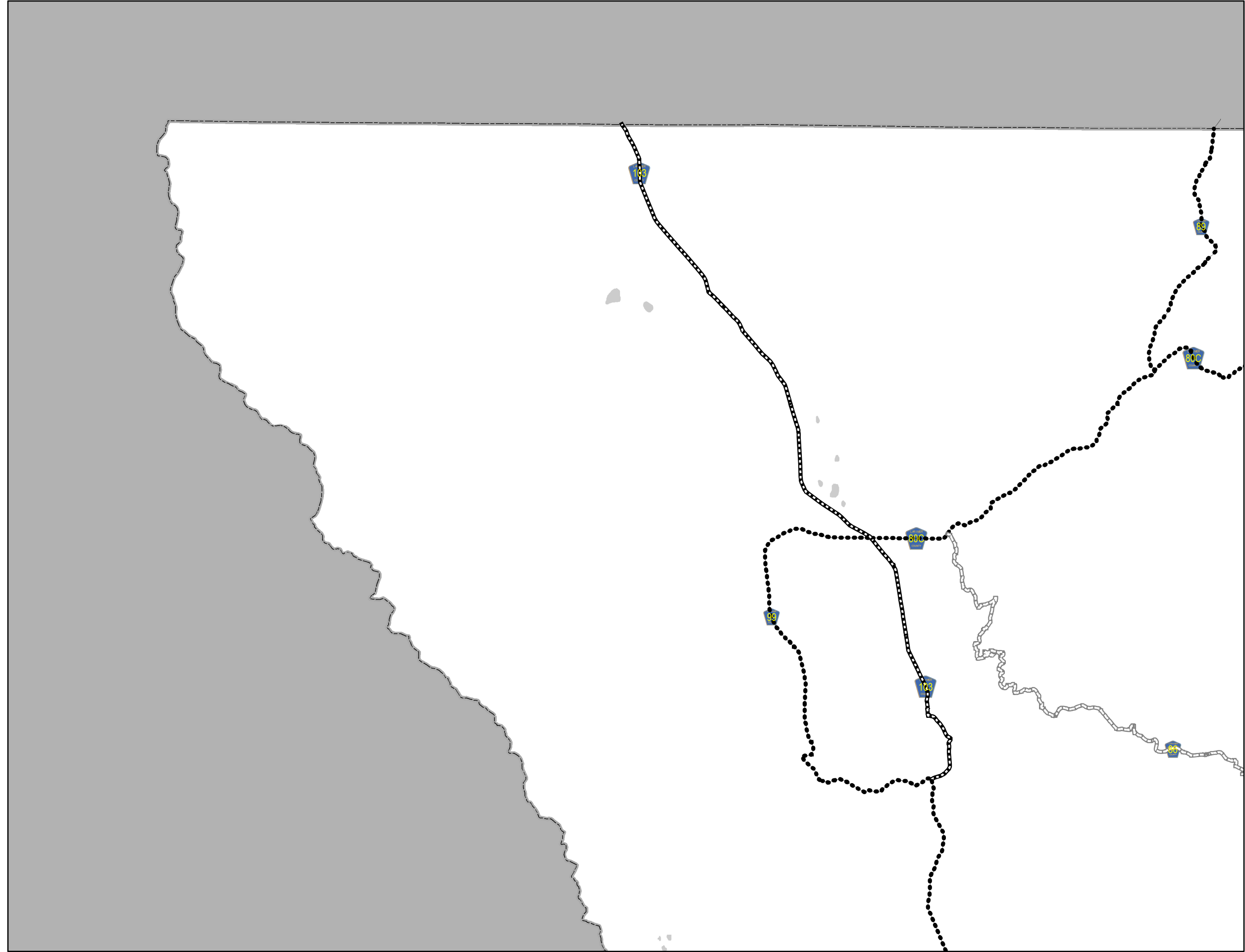
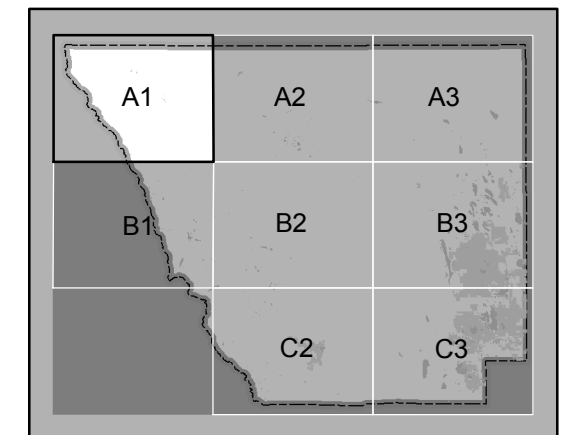
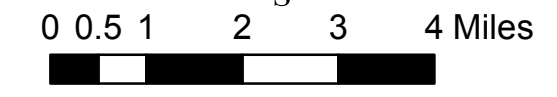
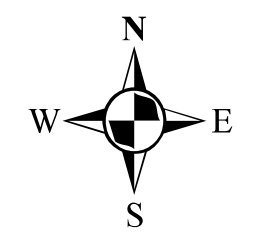


**Capacity Grade**



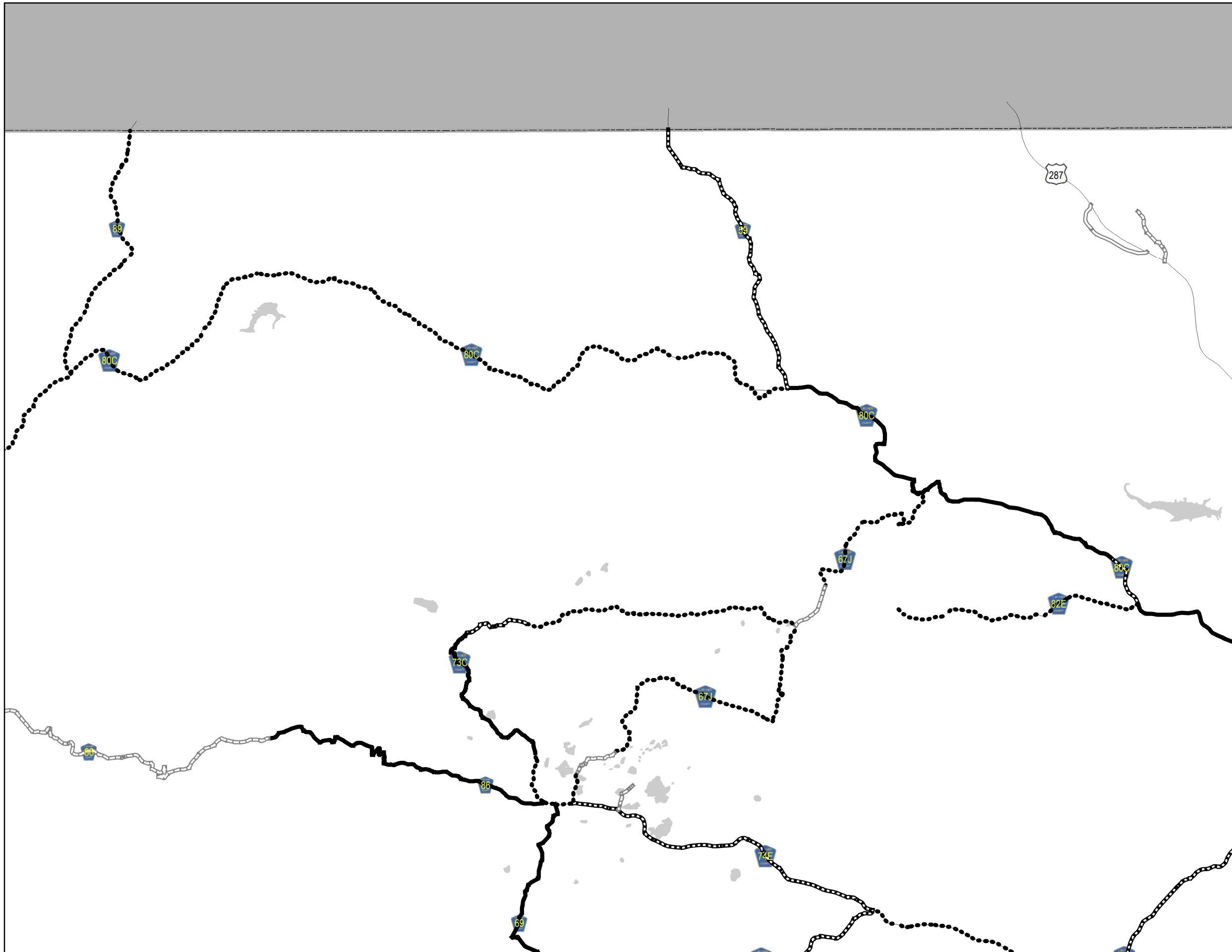
**Legend**

Capacity Grade	— Major Roads
— A	■ Lakes
- - - B	■ City Limits
••• C	
- · - · - D	
— F	



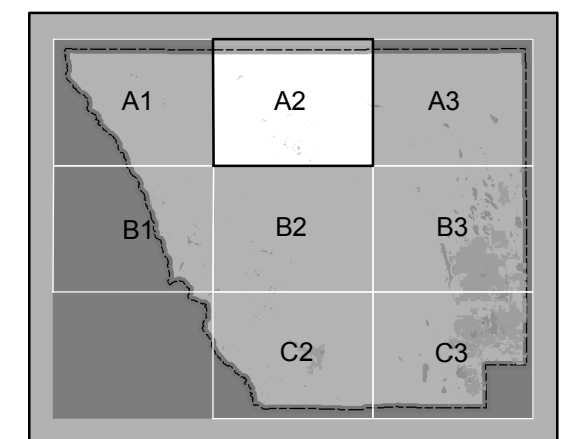
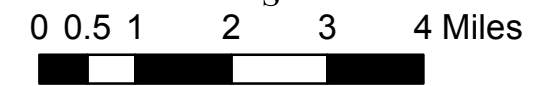
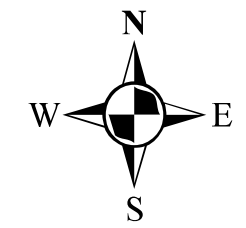
All data and information supplied is for informational purposes only. User expressly acknowledges and agrees that the use of such information is at the sole risk of User. The information provided by Larimer County is without warranty, express or implied, with respect to the accuracy of the data and information contained herein. Under no circumstances shall Larimer County be liable for actual, incidental, special or consequential damages that result from the use of the information by the User, its agents or assigns. Created: Feb 2, 2017

**Capacity Grade**



**Legend**

—	Major Roads
—	Lakes
—	City Limits
—	A
—	B
—	C
—	D
—	F

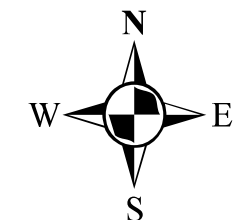


All data and information supplied is for informational purposes only. User expressly acknowledges and agrees that the use of such information is at the sole risk of User. The information provided by Larimer County is without warranty, express or implied, with respect to the accuracy of the data and information contained herein. Under no circumstances shall Larimer County be liable for actual, incidental, special or consequential damages that result from the use of the information by the User, its agents or assigns. Created: Feb 2, 2017

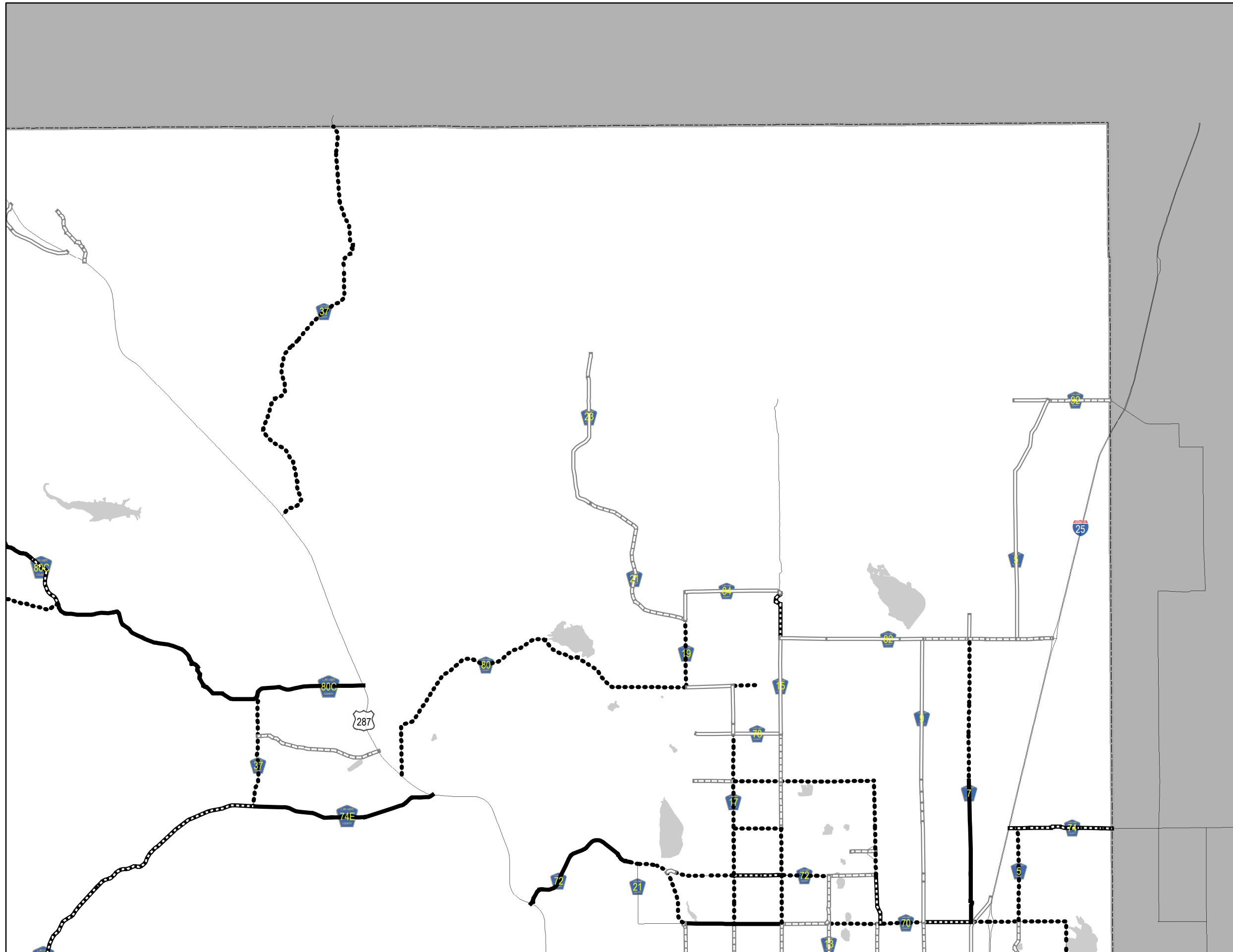
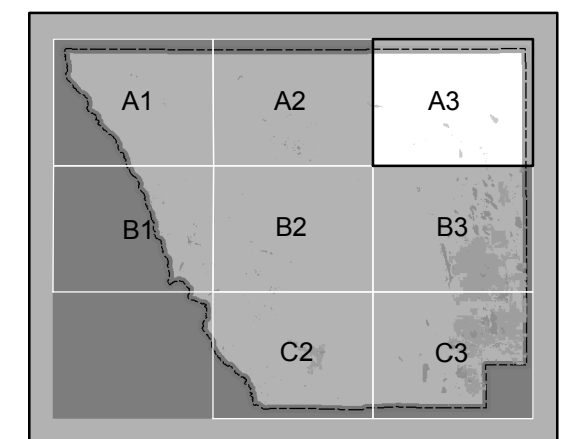
**Capacity Grade**

**Legend**

- |                       |               |
|-----------------------|---------------|
| <b>Capacity Grade</b> | — Major Roads |
| — A                   | ■ Lakes       |
| - - - B               | ■ City Limits |
| ••• C                 |               |
| - - - D               |               |
| — F                   |               |



0 0.5 1 2 3 4 Miles



All data and information supplied is for informational purposes only. User expressly acknowledges and agrees that the use of such information is at the sole risk of User. The information provided by Larimer County is without warranty, express or implied, with respect to the accuracy of the data and information contained herein. Under no circumstances shall Larimer County be liable for actual, incidental, special or consequential damages that result from the use of the information by the User, its agents or assigns. Created: Feb 2, 2017

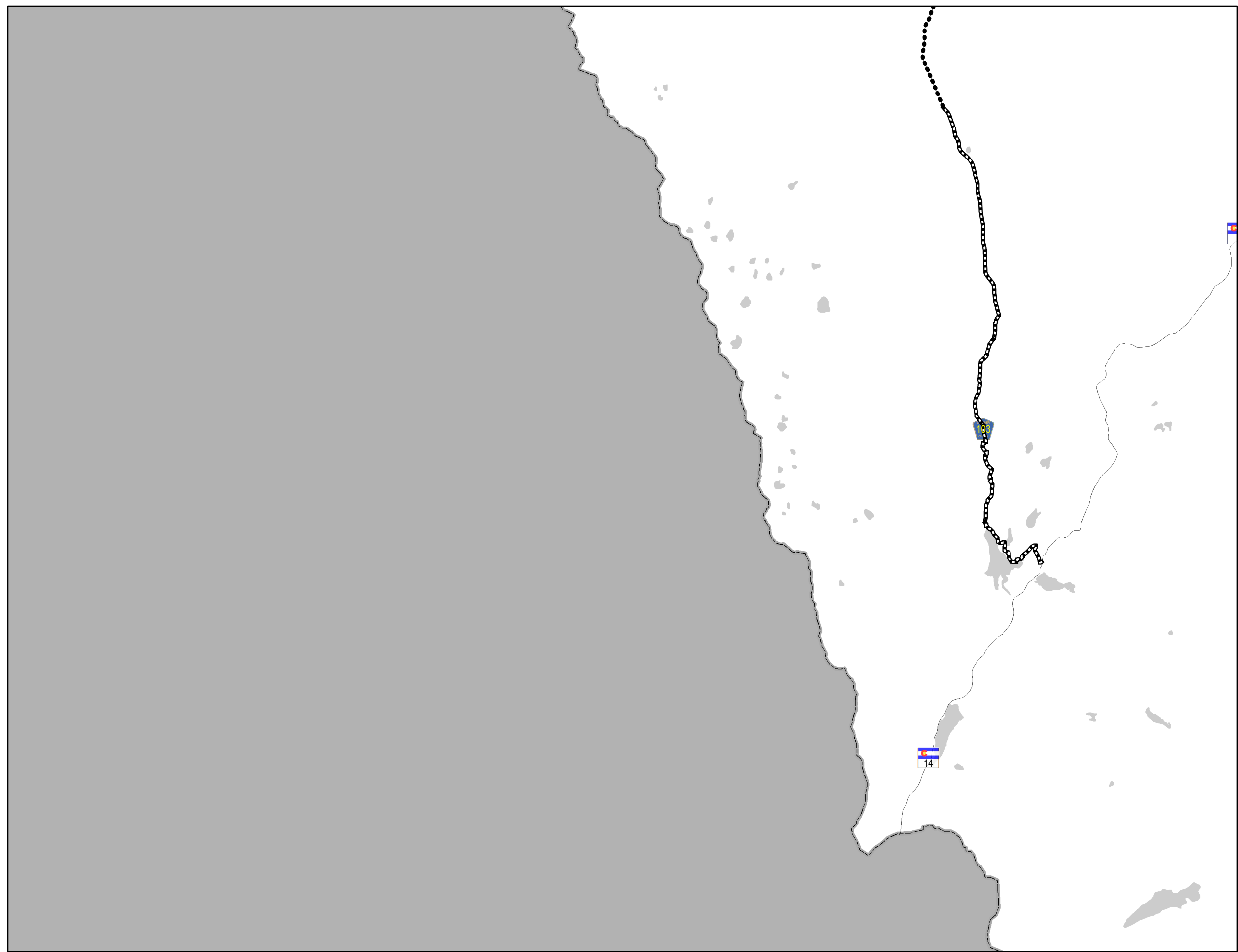
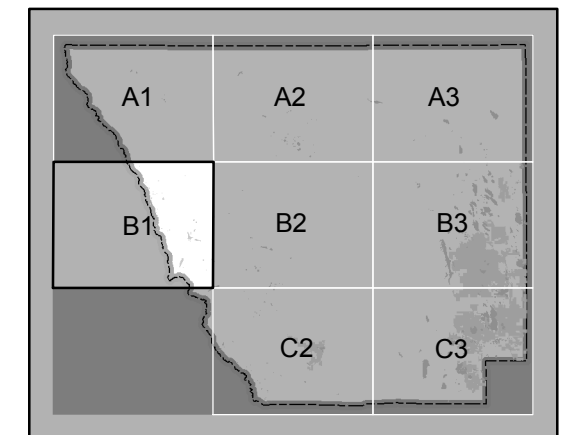
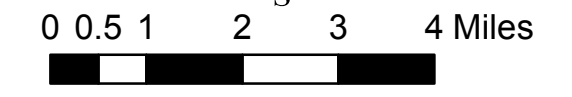
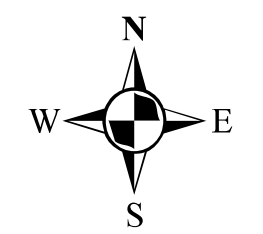


# B1

## Capacity Grade

### Legend

Capacity Grade	— Major Roads
— A	■ Lakes
- - - B	□ City Limits
••• C	
- · - · D	
— F	

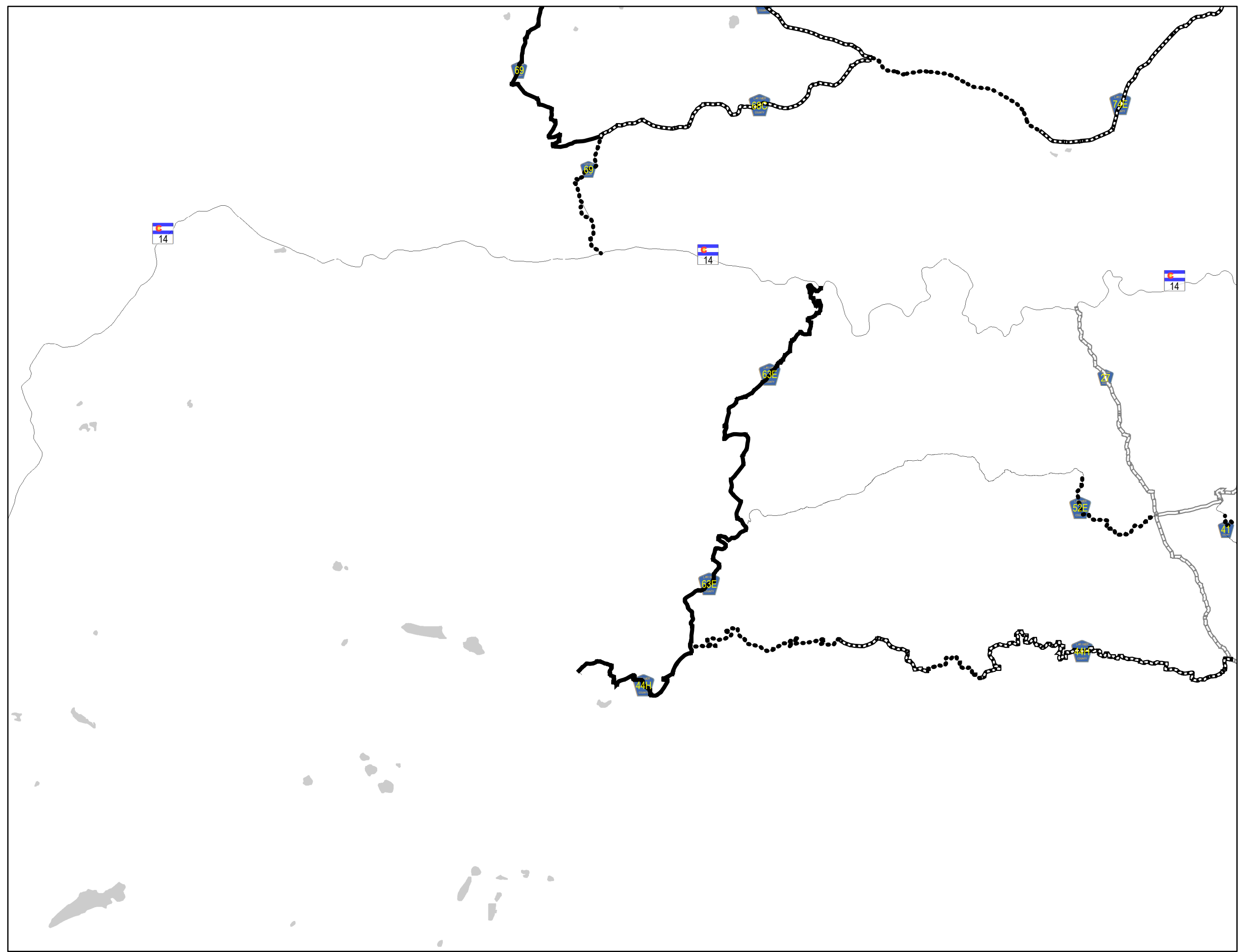
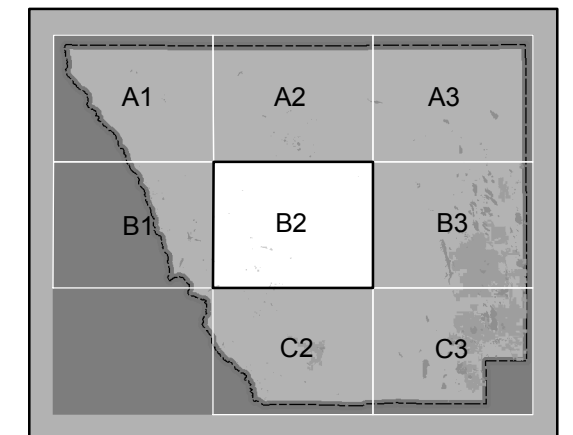
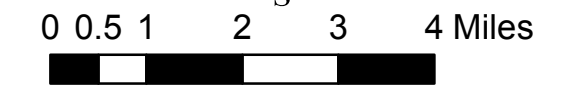
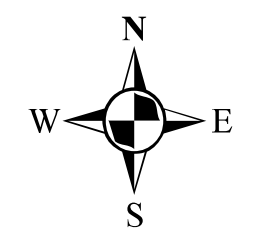


All data and information supplied is for informational purposes only. User expressly acknowledges and agrees that the use of such information is at the sole risk of User. The information provided by Larimer County is without warranty, express or implied, with respect to the accuracy of the data and information contained herein. Under no circumstances shall Larimer County be liable for actual, incidental, special or consequential damages that result from the use of the information by the User, its agents or assigns. Created: Feb 2, 2017

**Capacity Grade**

**Legend**

- |                |               |
|----------------|---------------|
| Capacity Grade | — Major Roads |
| — A            | ■ Lakes       |
| — B            | ■ City Limits |
| ••• C          |               |
| — D            |               |
| — F            |               |

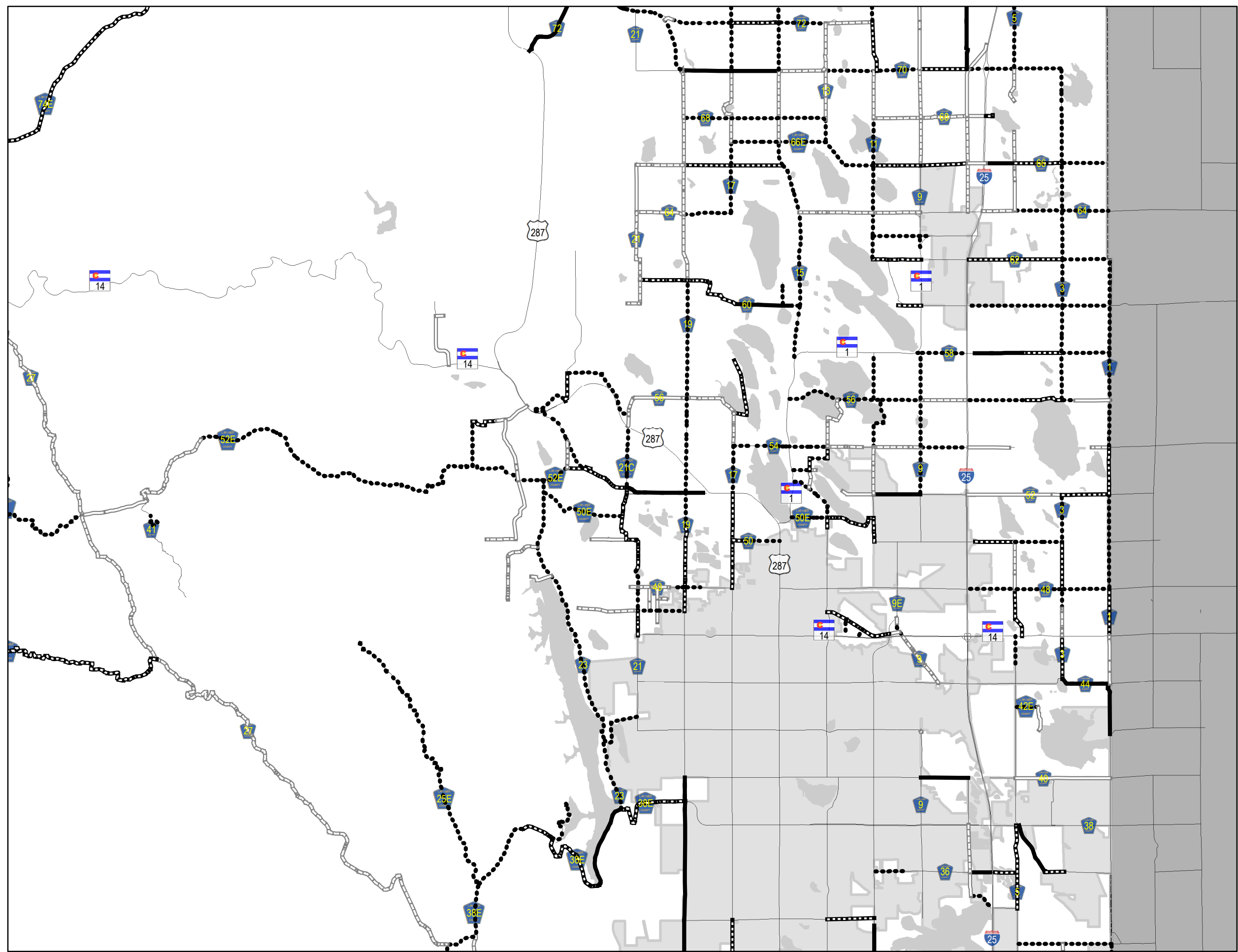
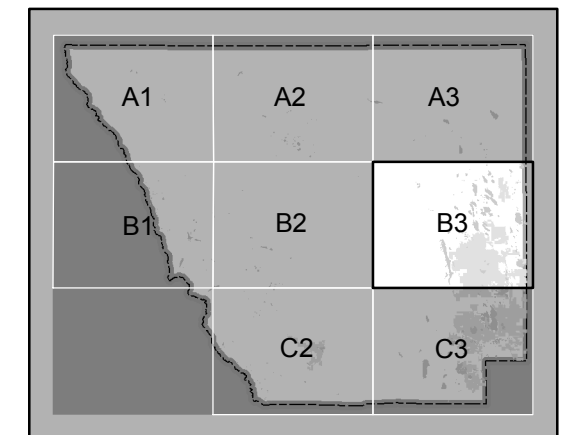
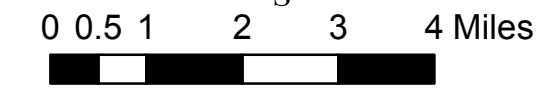
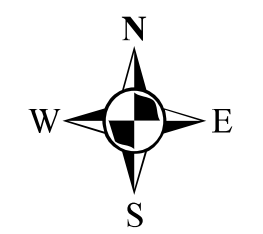


All data and information supplied is for informational purposes only. User expressly acknowledges and agrees that the use of such information is at the sole risk of User. The information provided by Larimer County is without warranty, express or implied, with respect to the accuracy of the data and information contained herein. Under no circumstances shall Larimer County be liable for actual, incidental, special or consequential damages that result from the use of the information by the User, its agents or assigns. Created: Feb 2, 2017

**Capacity Grade**

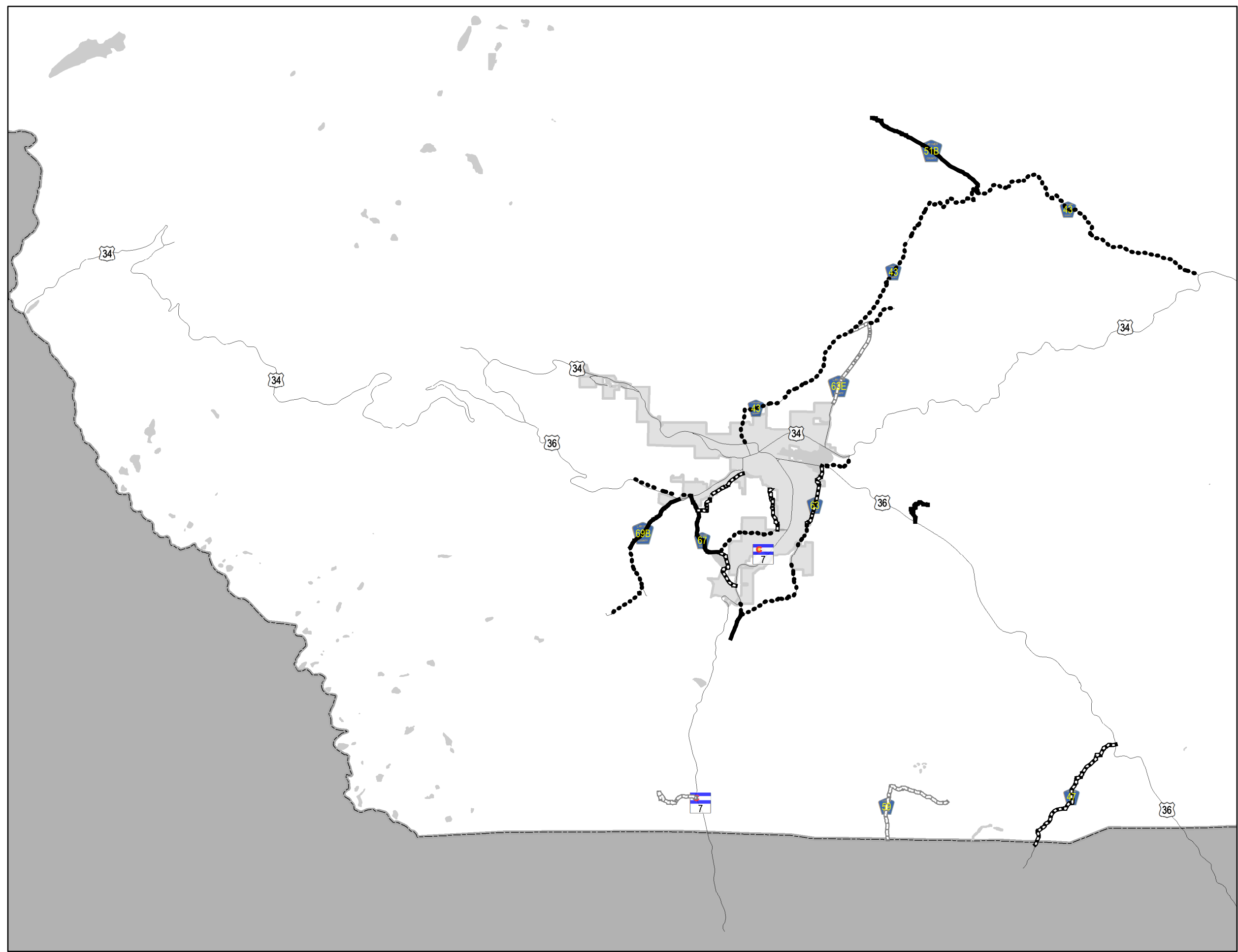
**Legend**

—	Major Roads
— A	Lakes
- - - B	City Limits
••• C	
- - - D	
— F	



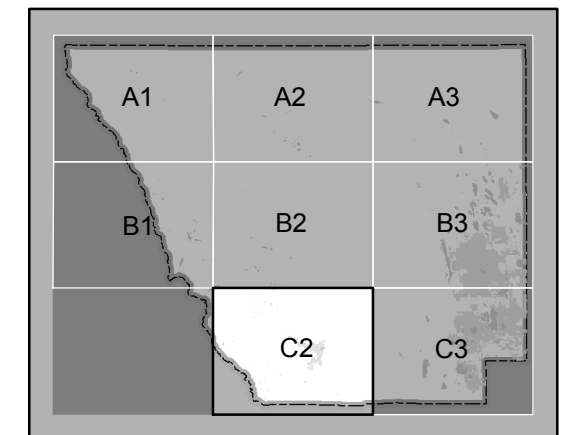
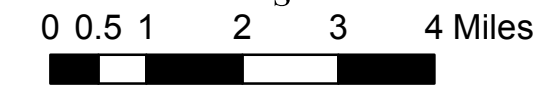
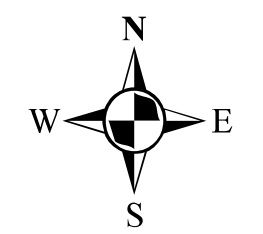
All data and information supplied is for informational purposes only. User expressly acknowledges and agrees that the use of such information is at the sole risk of User. The information provided by Larimer County is without warranty, express or implied, with respect to the accuracy of the data and information contained herein. Under no circumstances shall Larimer County be liable for actual, incidental, special or consequential damages that result from the use of the information by the User, its agents or assigns. Created: Feb 2, 2017

**Capacity Grade**



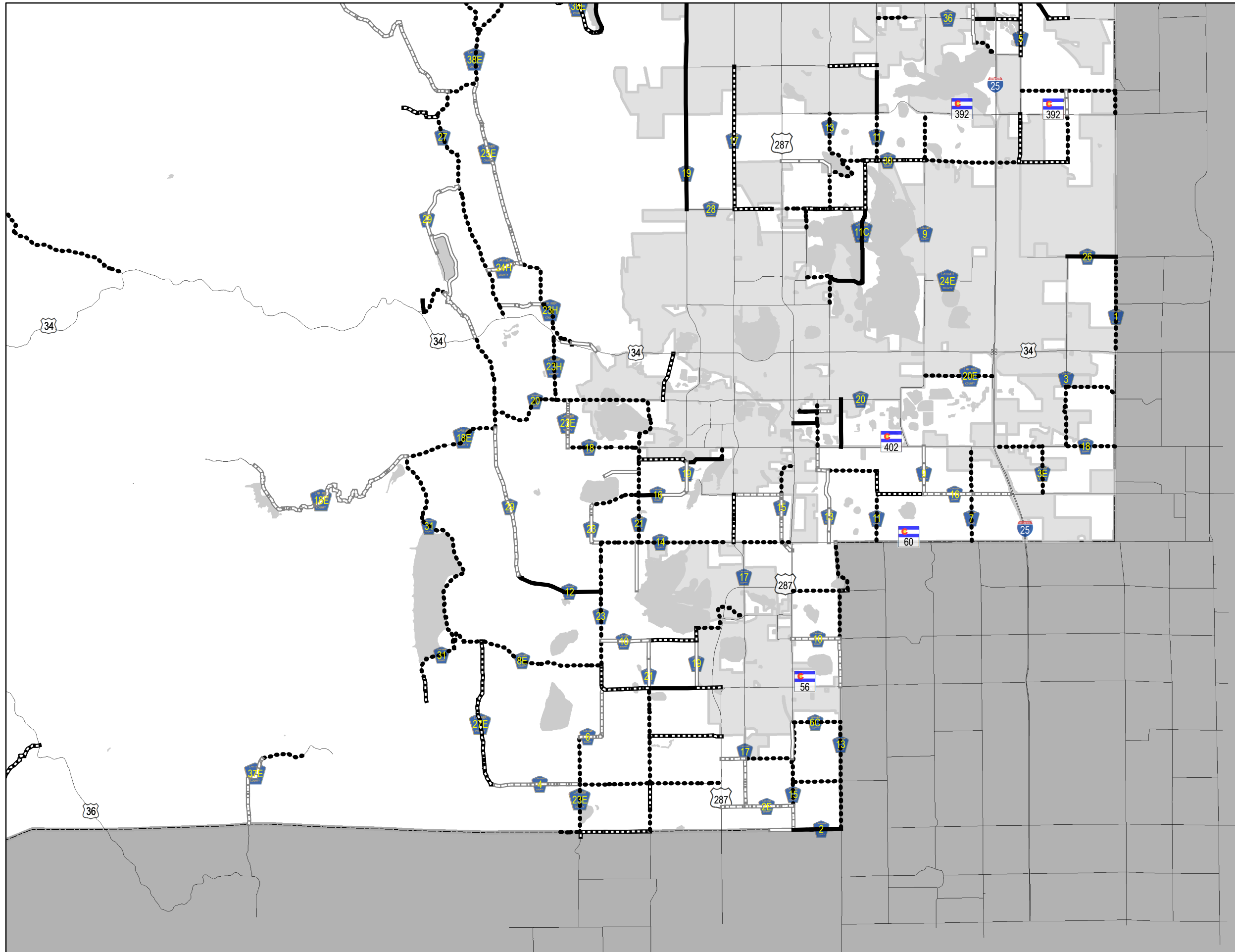
**Legend**

Capacity Grade	— Major Roads
— A	■ Lakes
- - - B	■ City Limits
••• C	
- - - D	
— F	



All data and information supplied is for informational purposes only. User expressly acknowledges and agrees that the use of such information is at the sole risk of User. The information provided by Larimer County is without warranty, express or implied, with respect to the accuracy of the data and information contained herein. Under no circumstances shall Larimer County be liable for actual, incidental, special or consequential damages that result from the use of the information by the User, its agents or assigns. Created: Feb 2, 2017

# Capacity Grade

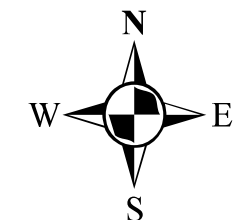


**Legend**

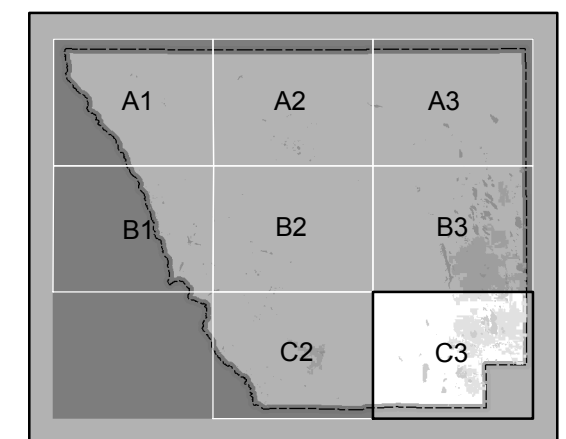
**Capacity Grade**

— (solid line)	Major Roads
— (dashed line)	A
--- (dotted line)	B
⋯⋯ (dotted line)	C
— (dash-dot line)	D
— (thick solid line)	F

Lakes  
 City Limits



0 0.5 1 2 3 4 Miles



All data and information supplied is for informational purposes only. User expressly acknowledges and agrees that the use of such information is at the sole risk of User. The information provided by Larimer County is without warranty, express or implied, with respect to the accuracy of the data and information contained herein. Under no circumstances shall Larimer County be liable for actual, incidental, special or consequential damages that result from the use of the information by the User, its agents or assigns. Created: Feb 2, 2017