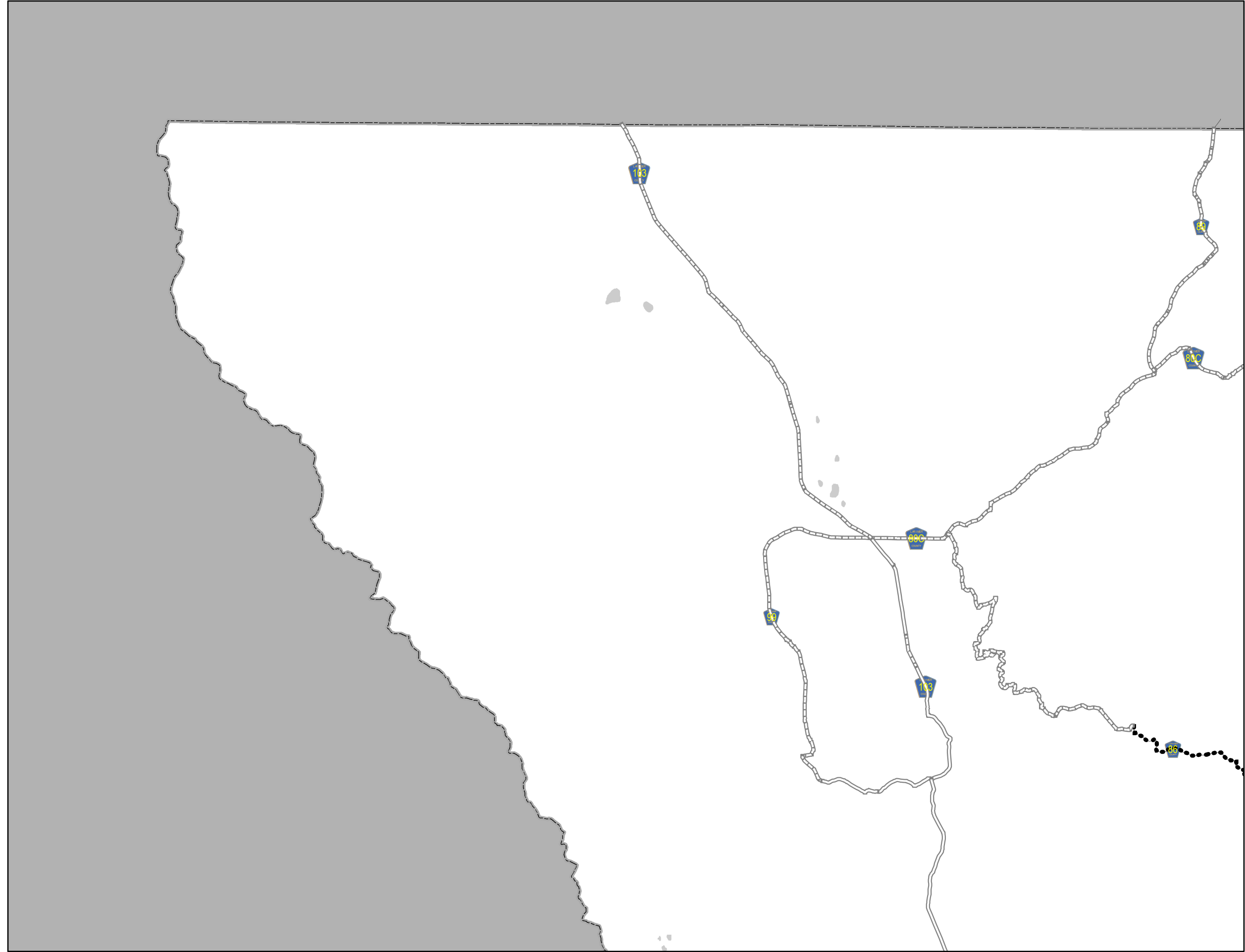
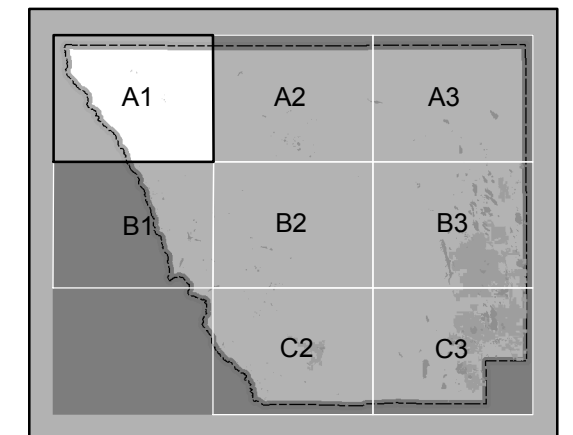
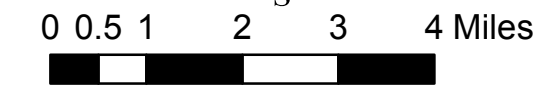
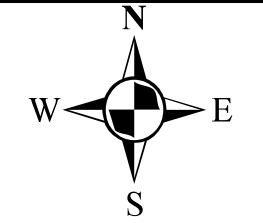


**Condition Grade**



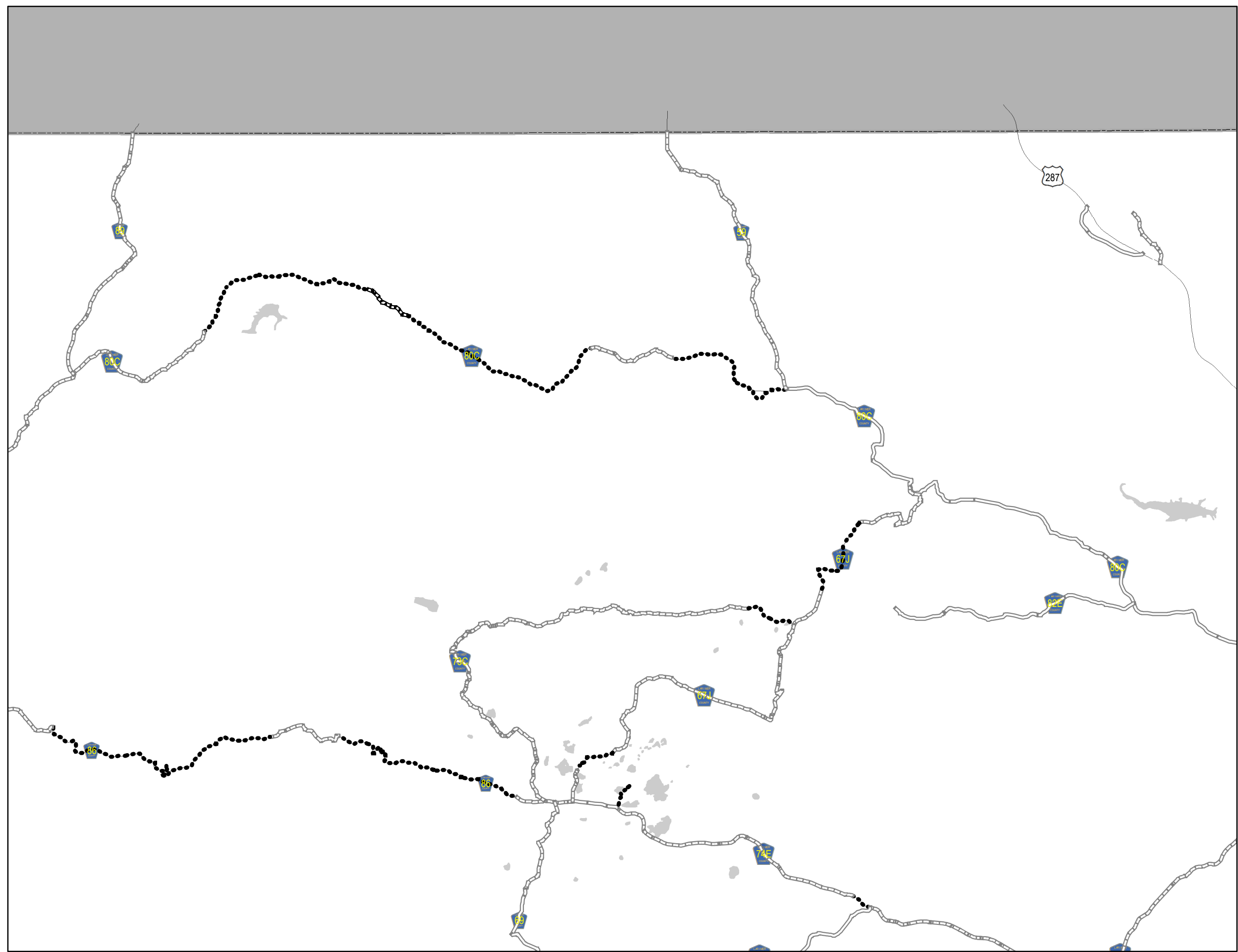
**Legend**

|               |               |
|---------------|---------------|
| — Major Roads | — Lakes       |
| — A           | — City Limits |
| - - - B       |               |
| ... C         |               |
| - . - . D     |               |
| — F           |               |



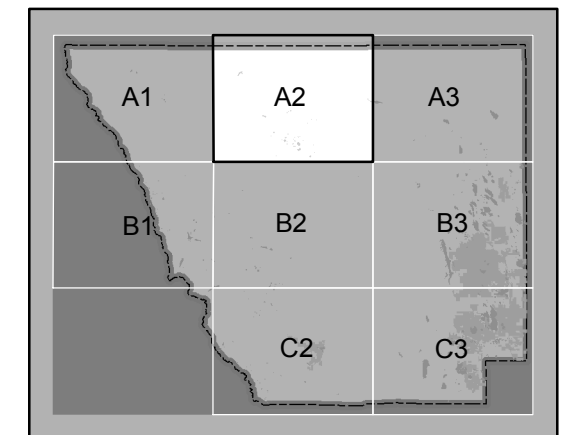
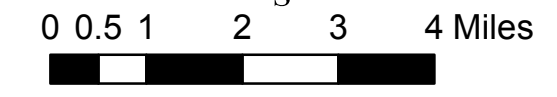
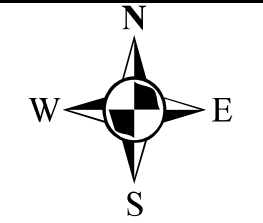
All data and information supplied is for informational purposes only. User expressly acknowledges and agrees that the use of such information is at the sole risk of User. The information provided by Larimer County is without warranty, express or implied, with respect to the accuracy of the data and information contained herein. Under no circumstances shall Larimer County be liable for actual, incidental, special or consequential damages that result from the use of the information by the User, its agents or assigns. Created: Feb 2, 2017

**Condition Grade**



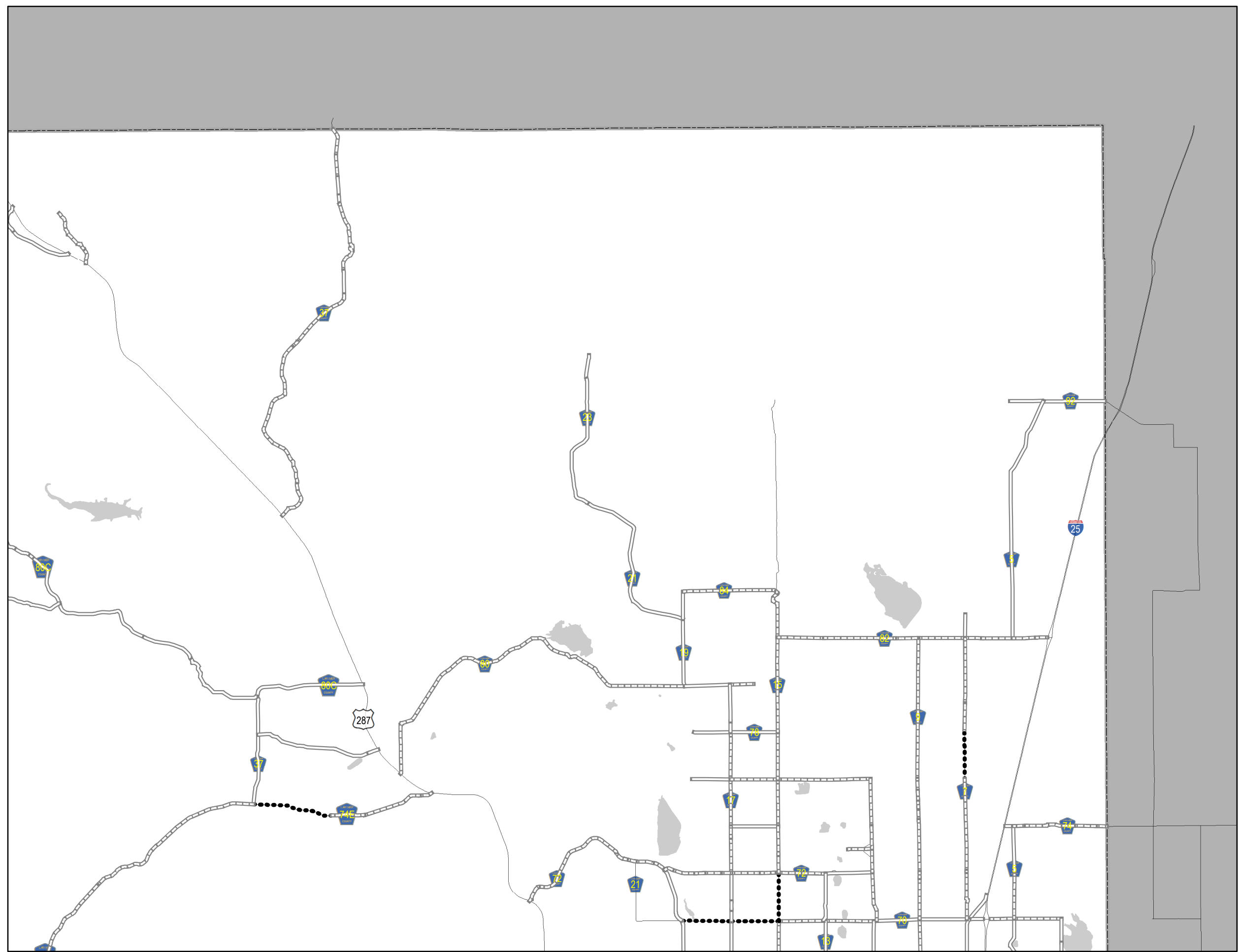
**Legend**

|               |               |
|---------------|---------------|
| — Major Roads | — Lakes       |
| — A           | — City Limits |
| - - - B       |               |
| ••• C         |               |
| - · - · D     |               |
| — F           |               |



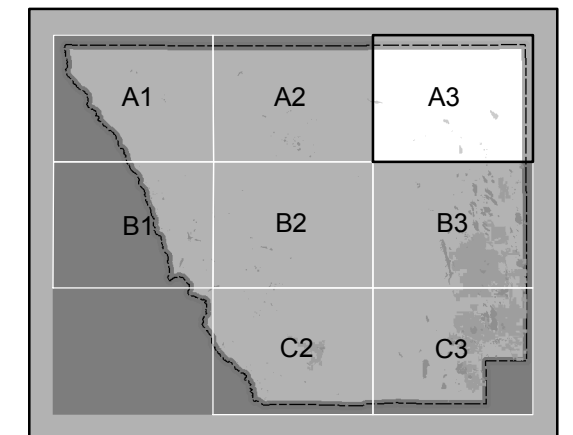
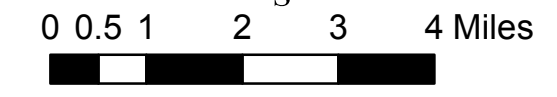
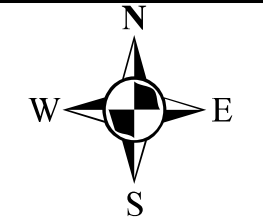
All data and information supplied is for informational purposes only. User expressly acknowledges and agrees that the use of such information is at the sole risk of User. The information provided by Larimer County is without warranty, express or implied, with respect to the accuracy of the data and information contained herein. Under no circumstances shall Larimer County be liable for actual, incidental, special or consequential damages that result from the use of the information by the User, its agents or assigns. Created: Feb 2, 2017

**Condition Grade**



**Legend**

|               |               |
|---------------|---------------|
| — Major Roads | — Lakes       |
| — A           | — City Limits |
| - - - B       |               |
| ••• C         |               |
| - . - . D     |               |
| — F           |               |

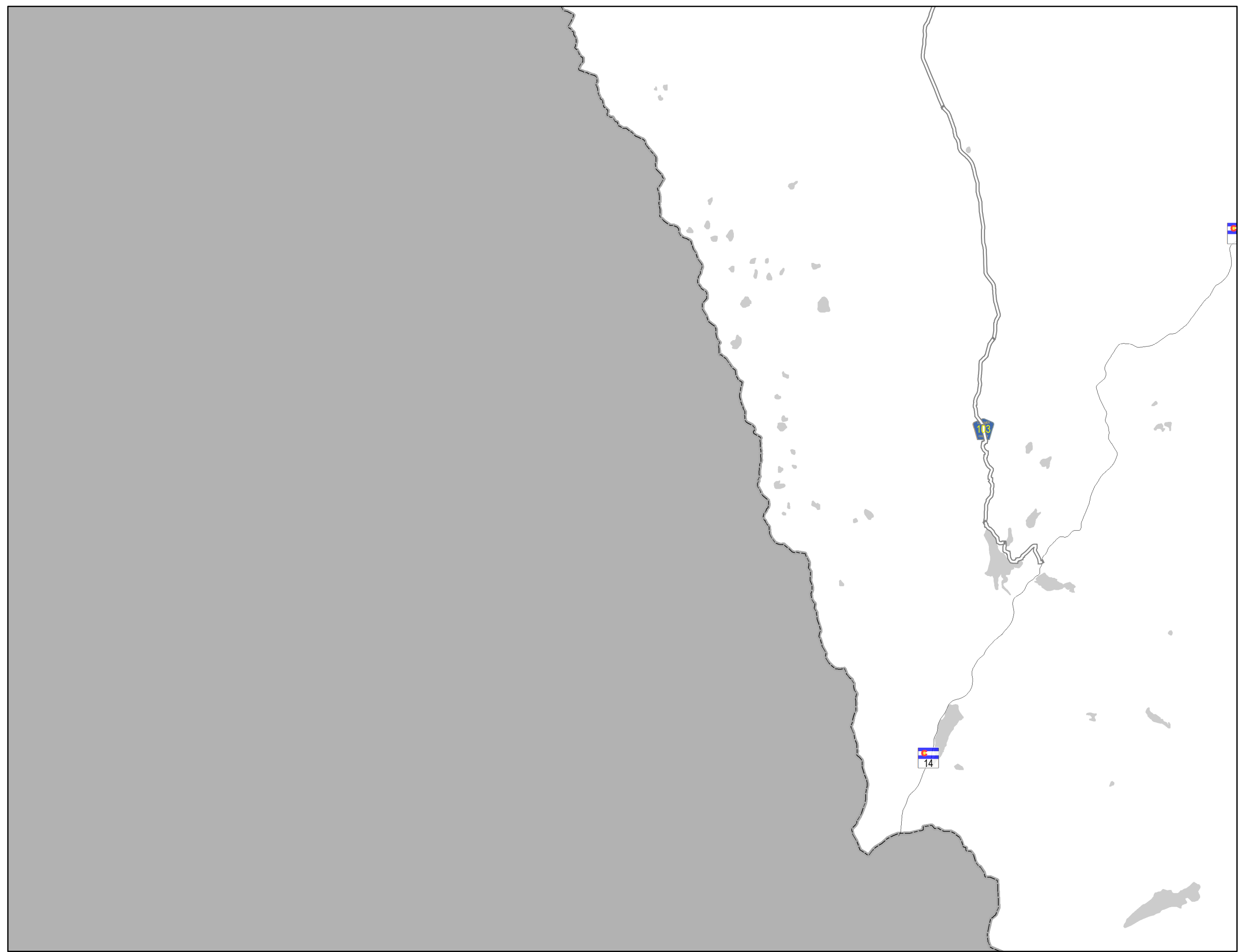


All data and information supplied is for informational purposes only. User expressly acknowledges and agrees that the use of such information is at the sole risk of User. The information provided by Larimer County is without warranty, express or implied, with respect to the accuracy of the data and information contained herein. Under no circumstances shall Larimer County be liable for actual, incidental, special or consequential damages that result from the use of the information by the User, its agents or assigns. Created: Feb 2, 2017



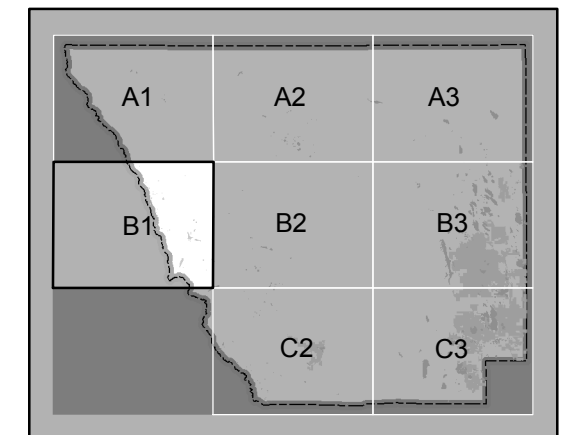
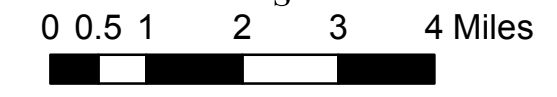
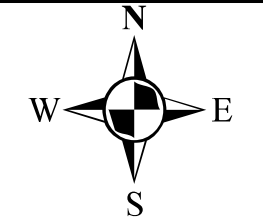
# B1

## Condition Grade



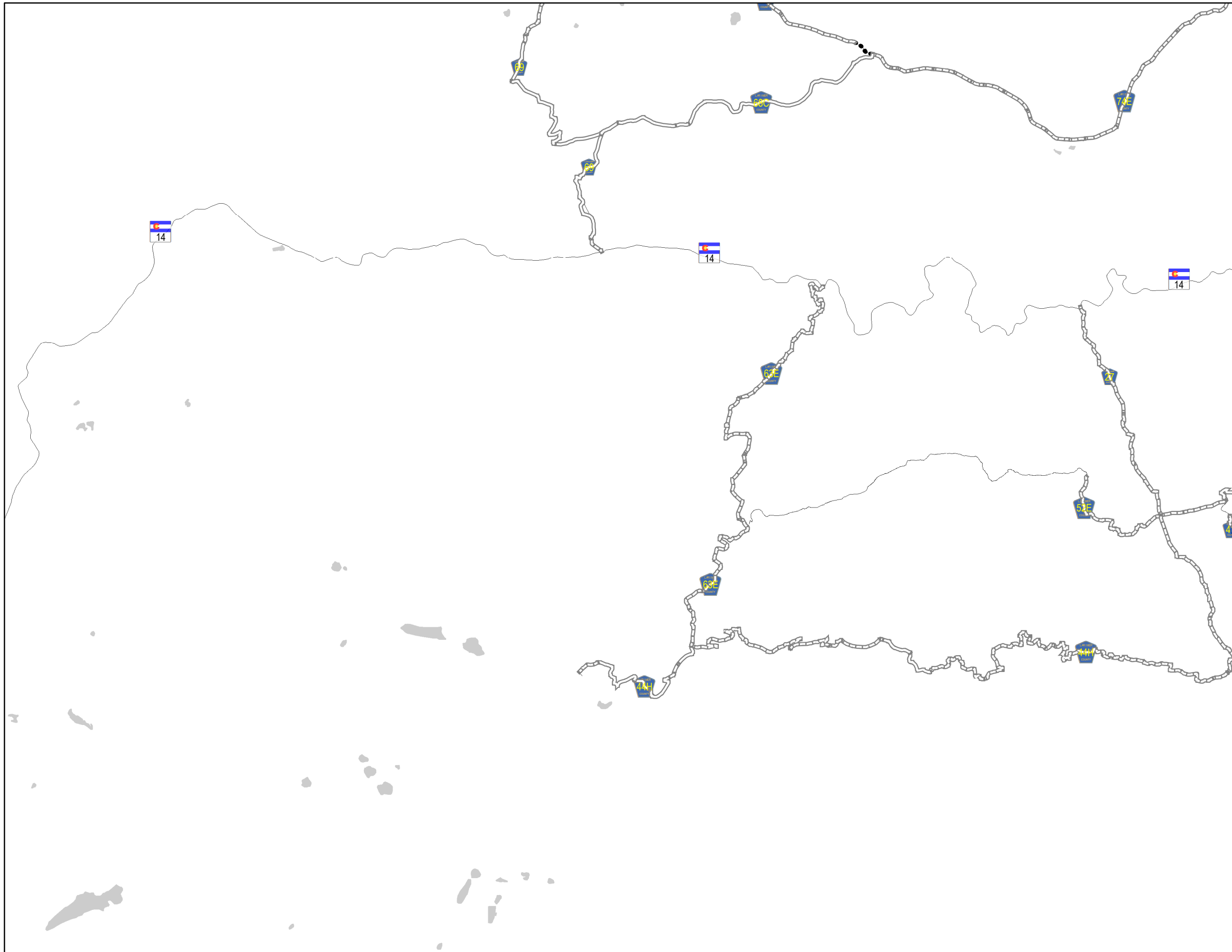
### Legend

|   |             |
|---|-------------|
| A | Major Roads |
| B | Lakes       |
| C | City Limits |
| D |             |
| F |             |



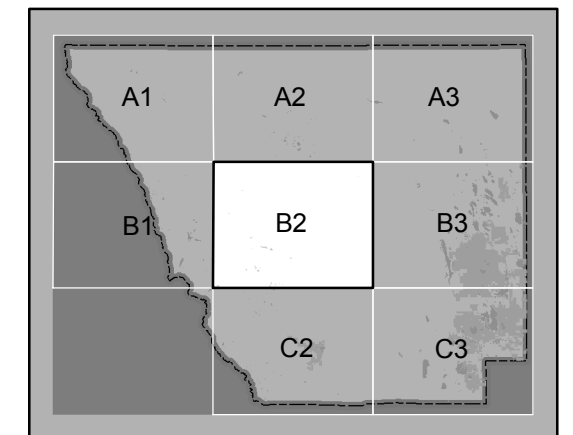
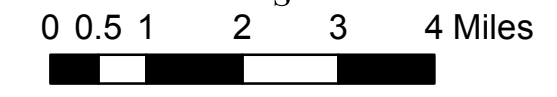
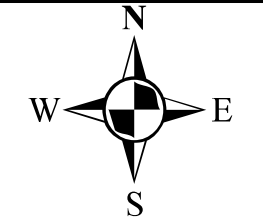
All data and information supplied is for informational purposes only. User expressly acknowledges and agrees that the use of such information is at the sole risk of User. The information provided by Larimer County is without warranty, express or implied, with respect to the accuracy of the data and information contained herein. Under no circumstances shall Larimer County be liable for actual, incidental, special or consequential damages that result from the use of the information by the User, its agents or assigns. Created: Feb 2, 2017

**Condition Grade**



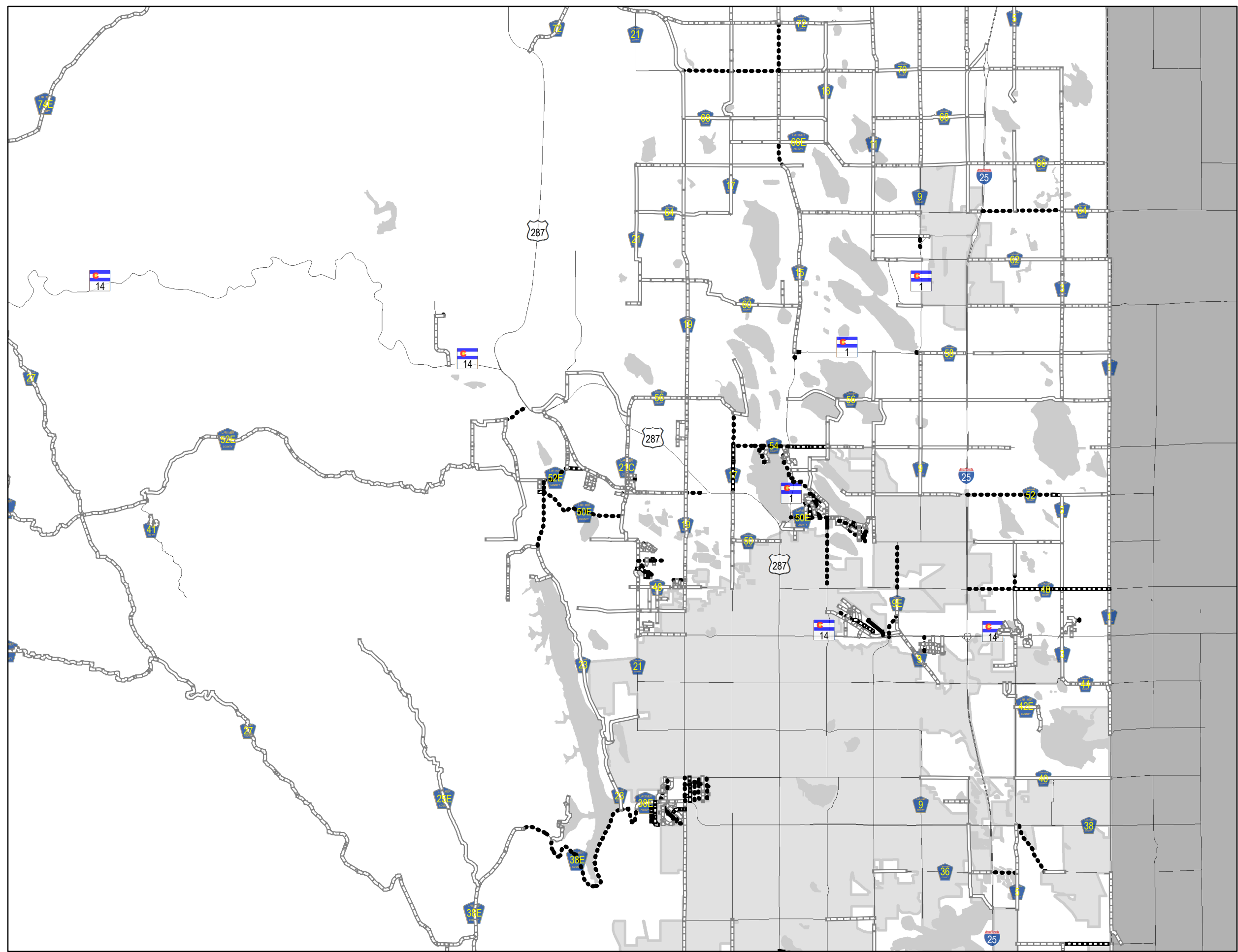
**Legend**

|   |             |
|---|-------------|
| — | Major Roads |
| ▬ | Lakes       |
| ▭ | City Limits |
| ▬ | A           |
| ▬ | B           |
| ▬ | C           |
| ▬ | D           |
| ▬ | F           |



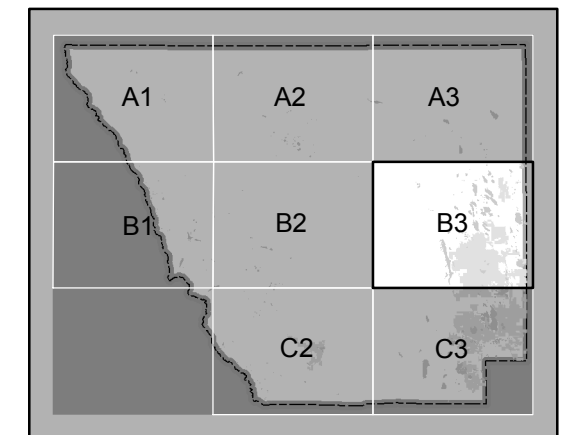
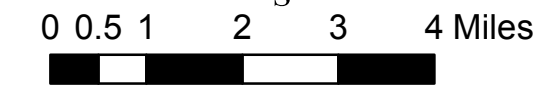
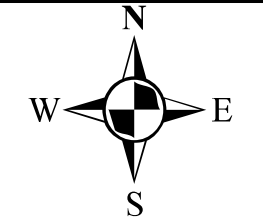
All data and information supplied is for informational purposes only. User expressly acknowledges and agrees that the use of such information is at the sole risk of User. The information provided by Larimer County is without warranty, express or implied, with respect to the accuracy of the data and information contained herein. Under no circumstances shall Larimer County be liable for actual, incidental, special or consequential damages that result from the use of the information by the User, its agents or assigns. Created: Feb 2, 2017

**Condition Grade**



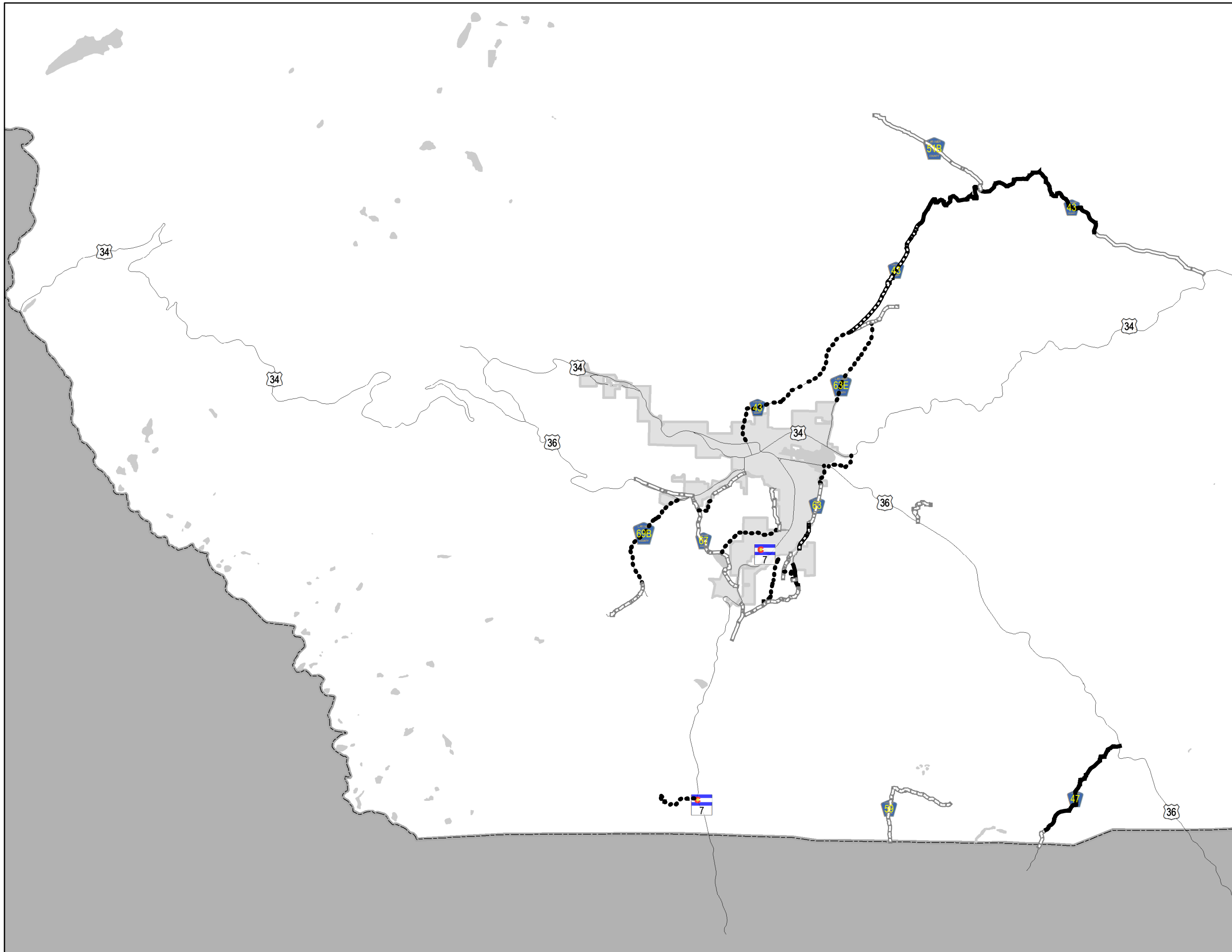
**Legend**

|   |             |
|---|-------------|
| — | Major Roads |
| ▬ | Lakes       |
| ▬ | City Limits |
| ▬ | A           |
| ▬ | B           |
| ▬ | C           |
| ▬ | D           |
| ▬ | F           |



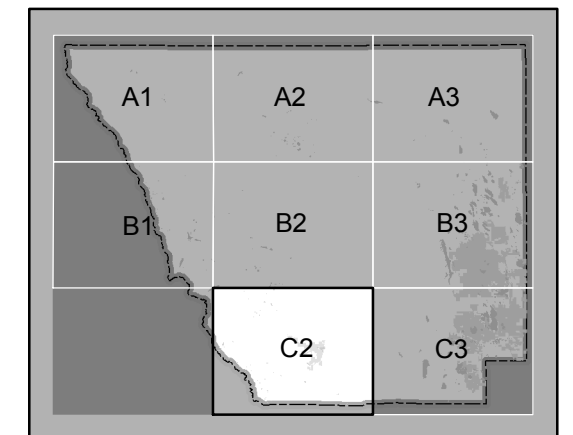
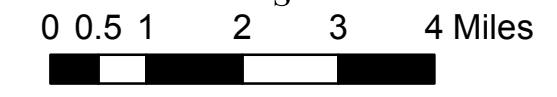
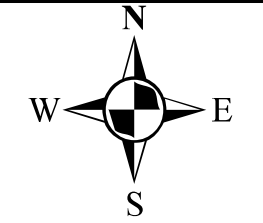
All data and information supplied is for informational purposes only. User expressly acknowledges and agrees that the use of such information is at the sole risk of User. The information provided by Larimer County is without warranty, express or implied, with respect to the accuracy of the data and information contained herein. Under no circumstances shall Larimer County be liable for actual, incidental, special or consequential damages that result from the use of the information by the User, its agents or assigns. Created: Feb 2, 2017

**Condition Grade**



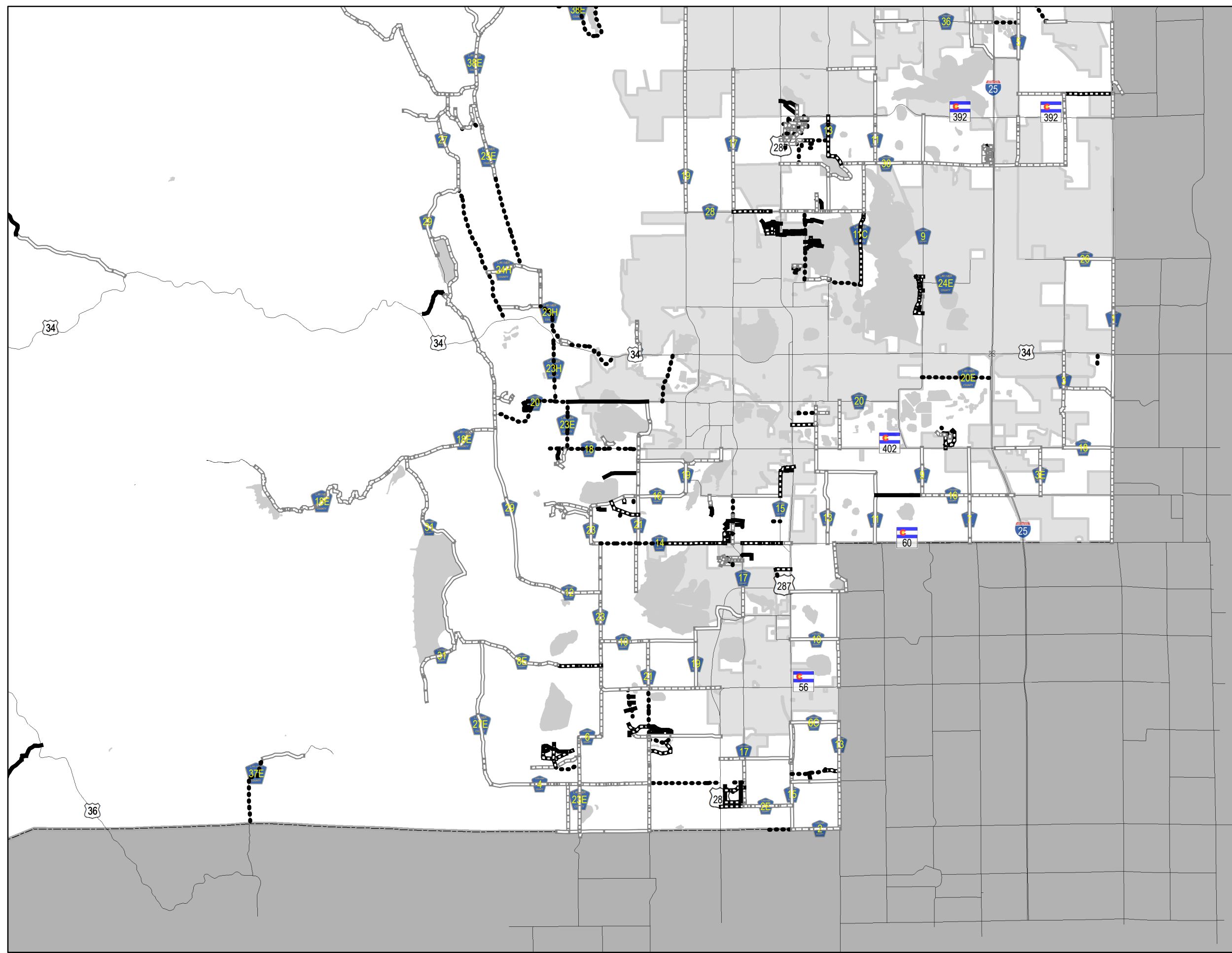
**Legend**

|          |             |
|----------|-------------|
| —        | Major Roads |
| ▬▬▬      | A           |
| ▬▬▬▬▬    | B           |
| ●●●●     | C           |
| ▬▬▬▬▬▬   | D           |
| ▬▬▬▬▬▬▬▬ | F           |
| ■        | Lakes       |
| □        | City Limits |



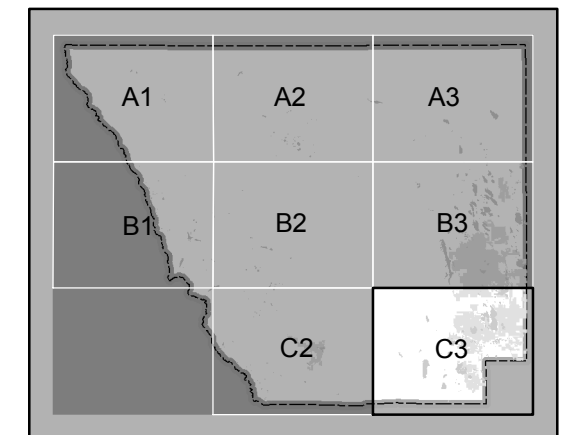
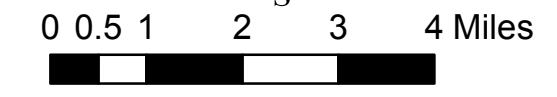
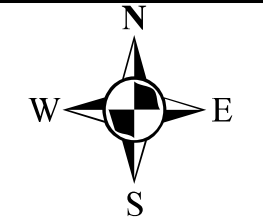
All data and information supplied is for informational purposes only. User expressly acknowledges and agrees that the use of such information is at the sole risk of User. The information provided by Larimer County is without warranty, express or implied, with respect to the accuracy of the data and information contained herein. Under no circumstances shall Larimer County be liable for actual, incidental, special or consequential damages that result from the use of the information by the User, its agents or assigns. Created: Feb 2, 2017

**Condition Grade**



**Legend**

|                 |               |
|-----------------|---------------|
| Condition Grade | — Major Roads |
| A               | Lakes         |
| B               | City Limits   |
| C               |               |
| D               |               |
| F               |               |



All data and information supplied is for informational purposes only. User expressly acknowledges and agrees that the use of such information is at the sole risk of User. The information provided by Larimer County is without warranty, express or implied, with respect to the accuracy of the data and information contained herein. Under no circumstances shall Larimer County be liable for actual, incidental, special or consequential damages that result from the use of the information by the User, its agents or assigns. Created: Feb 2, 2017