



LARIMER COUNTY

2020

BUDGET

[BRIEF]

Larimer County's 2020 adopted operating budget is \$289,581,175. The total adopted budget, with non-operational governmental accounts, capital projects and disaster recovery costs is \$575,815,685.

LARIMER COUNTY BOARD OF COUNTY COMMISSIONERS



(From left) **Tom Donnelly**, District 3 ;
Steve Johnson, District 2 ; **John Kefalas**, District 1

COMMISSIONERS MESSAGE

The Larimer County Board of Commissioners is again providing a tax credit for property taxes due in 2020 that will allow property owners to retain \$3.5 million in property taxes. This credit will help offset the property tax increase resulting from higher property values and lower all property tax bills. The 2020 adopted budget invests in our future by allocating nearly 35 percent of all expenditures to capital projects and flood recovery work on roadways.

LARIMER COUNTY ELECTED OFFICIALS



Bob Overbeck
Assessor



Angela Myers
Clerk &
Recorder



James A. Wilkerson IV M.D.
Coroner



Cliff Riedel
District
Attorney



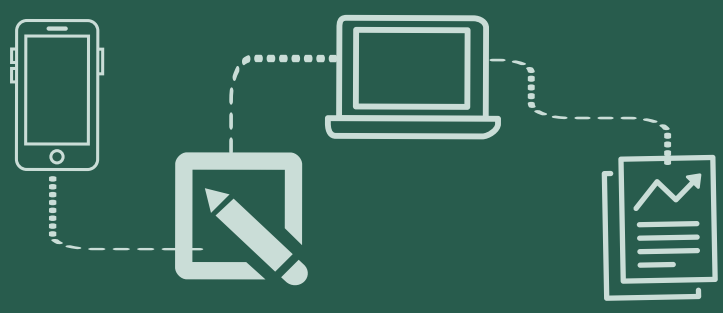
Justin Smith
Sheriff



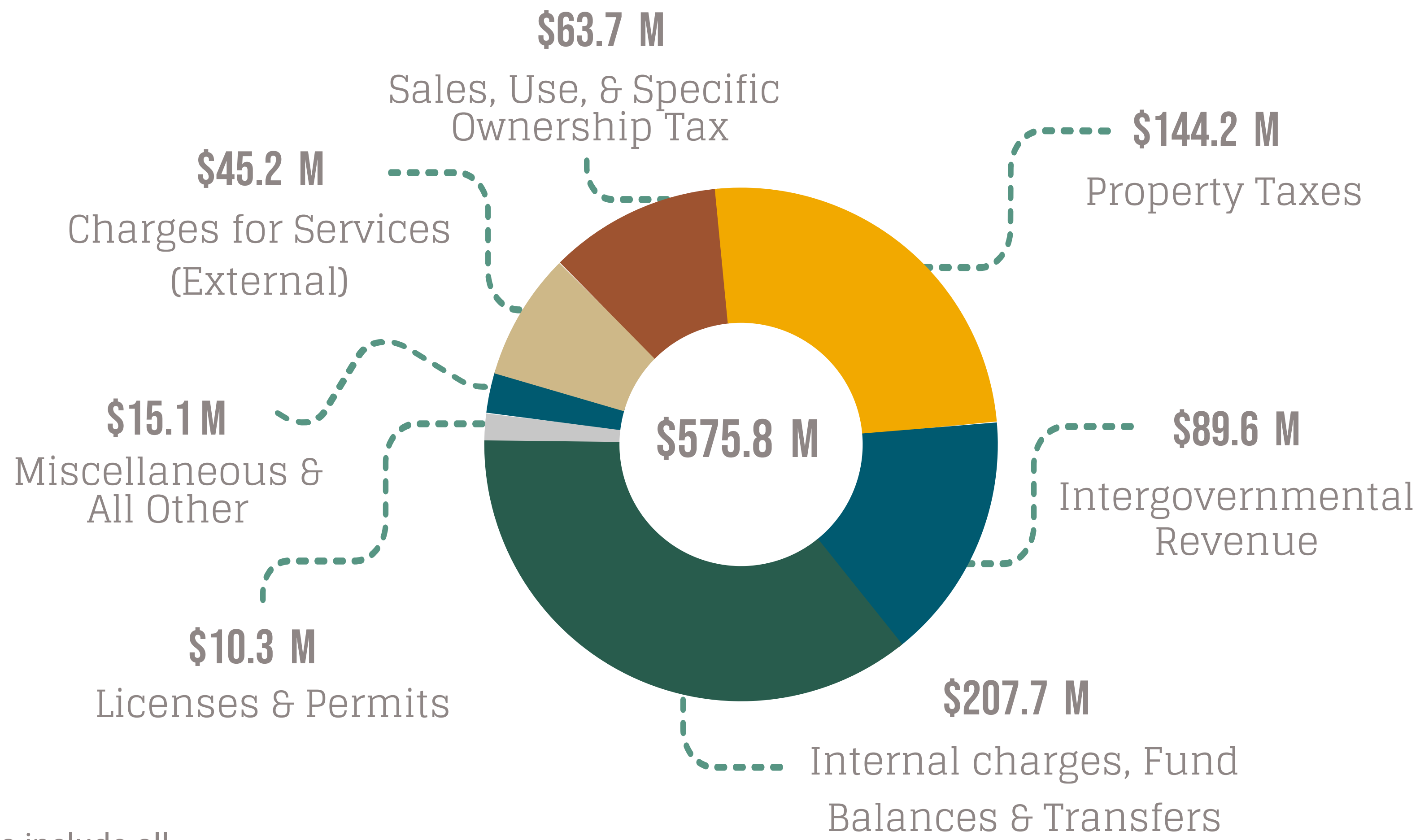
Chad Washburn
Surveyor



Irene Josey
Treasurer

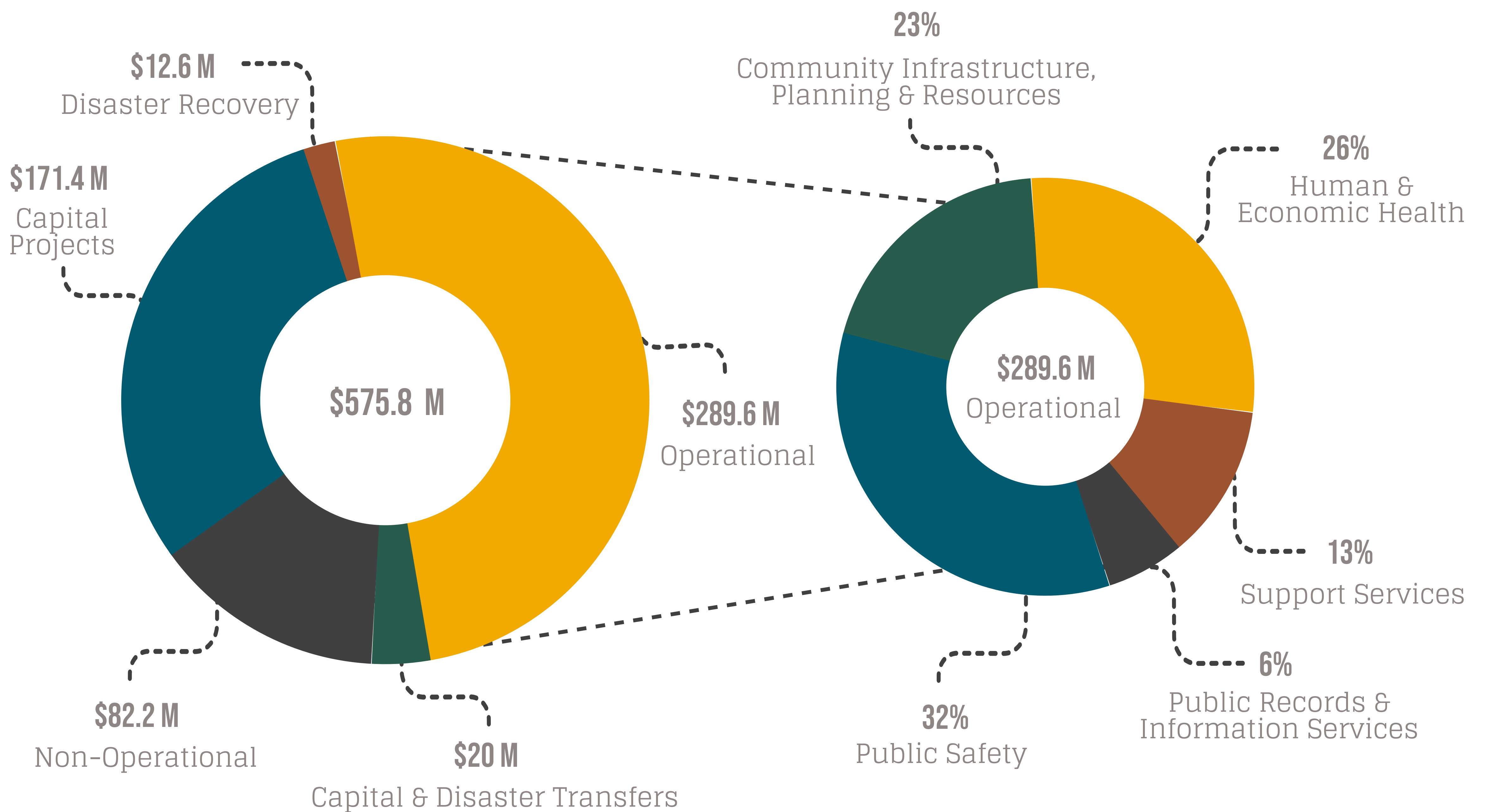


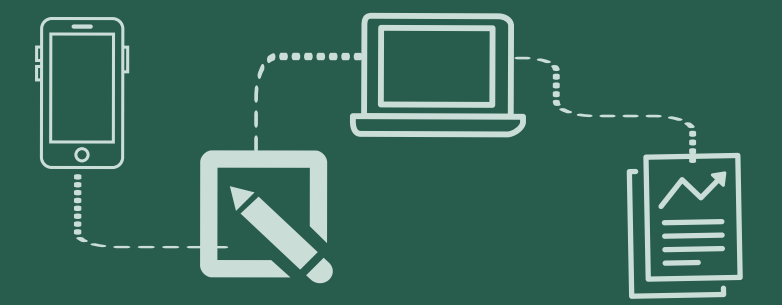
2020 ADOPTED SOURCES OF FUNDS*



* These funding sources include all revenue in the total adopted budget

2020 ADOPTED USES OF FUNDS





2020 TAX LEVY SUMMARY

Mill levys are set by each taxing authority. The mill levys applicable to your property tax may differ from this example, which represents a median-priced home in Fort Collins.

Start with your residential home's appraised value.

Average Appraised Value
\$384,200



Then, determine your property's assessed value (Appraised value x 7.15%)

\$384,200 X 7.15%
= \$27,470



Next, calculate your annual property tax rate (Assessed value x Total Mill Levy / 1000)

\$27,470 X 95.963
mills/ 1000 = \$2,636.13

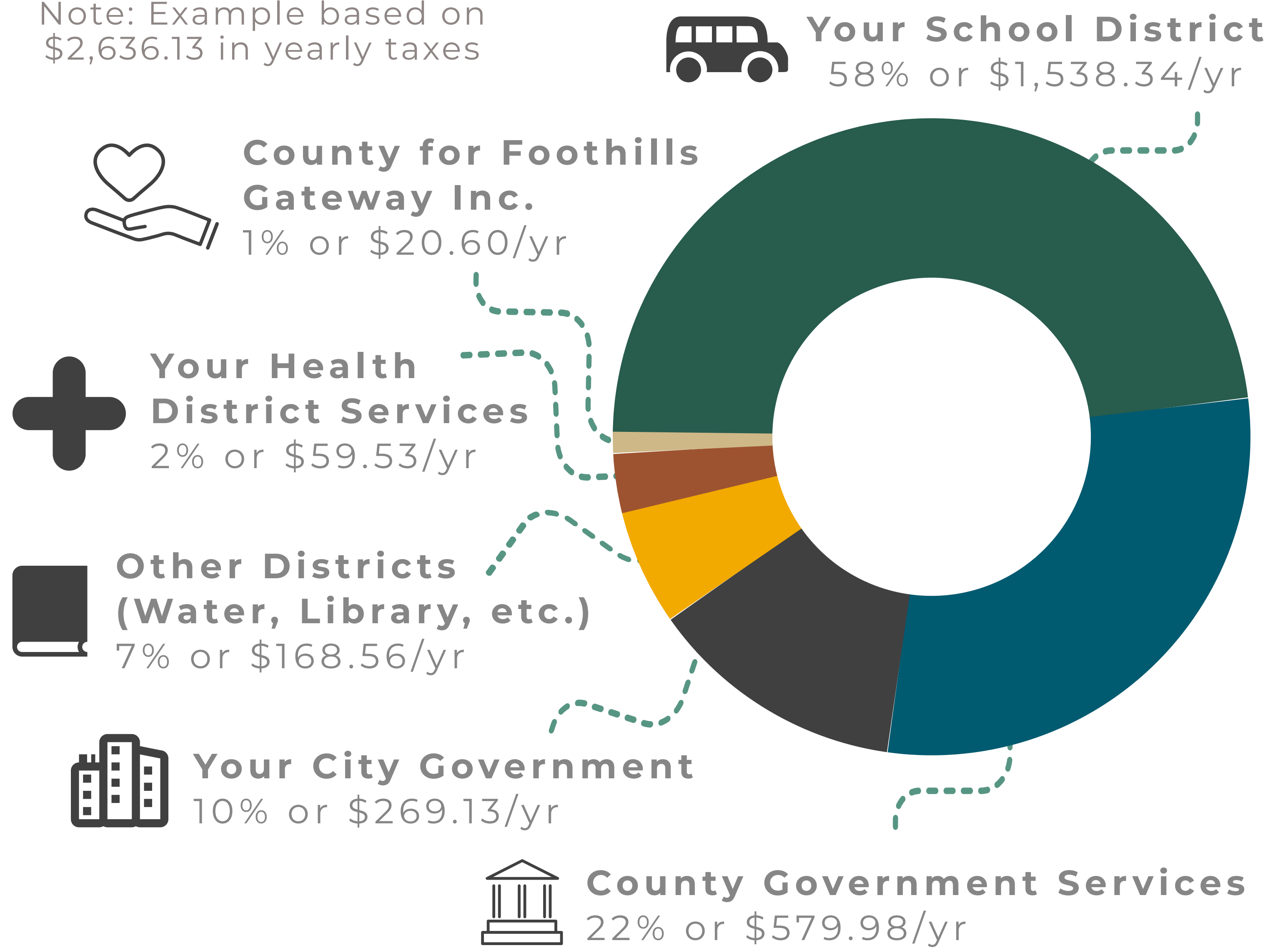


Larimer County's share is 22% =
\$579.98*/year

* Excludes portion allocated to Foothills Gateway Inc.

WHERE DOES YOUR PROPERTY TAX MONEY GO?

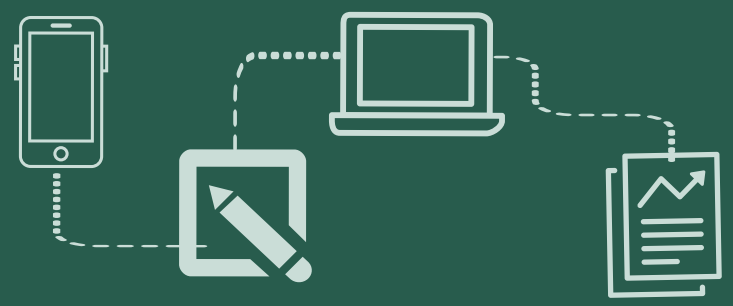
Note: Example based on \$2,636.13 in yearly taxes



MILL LEVY OF TAXING AUTHORITY

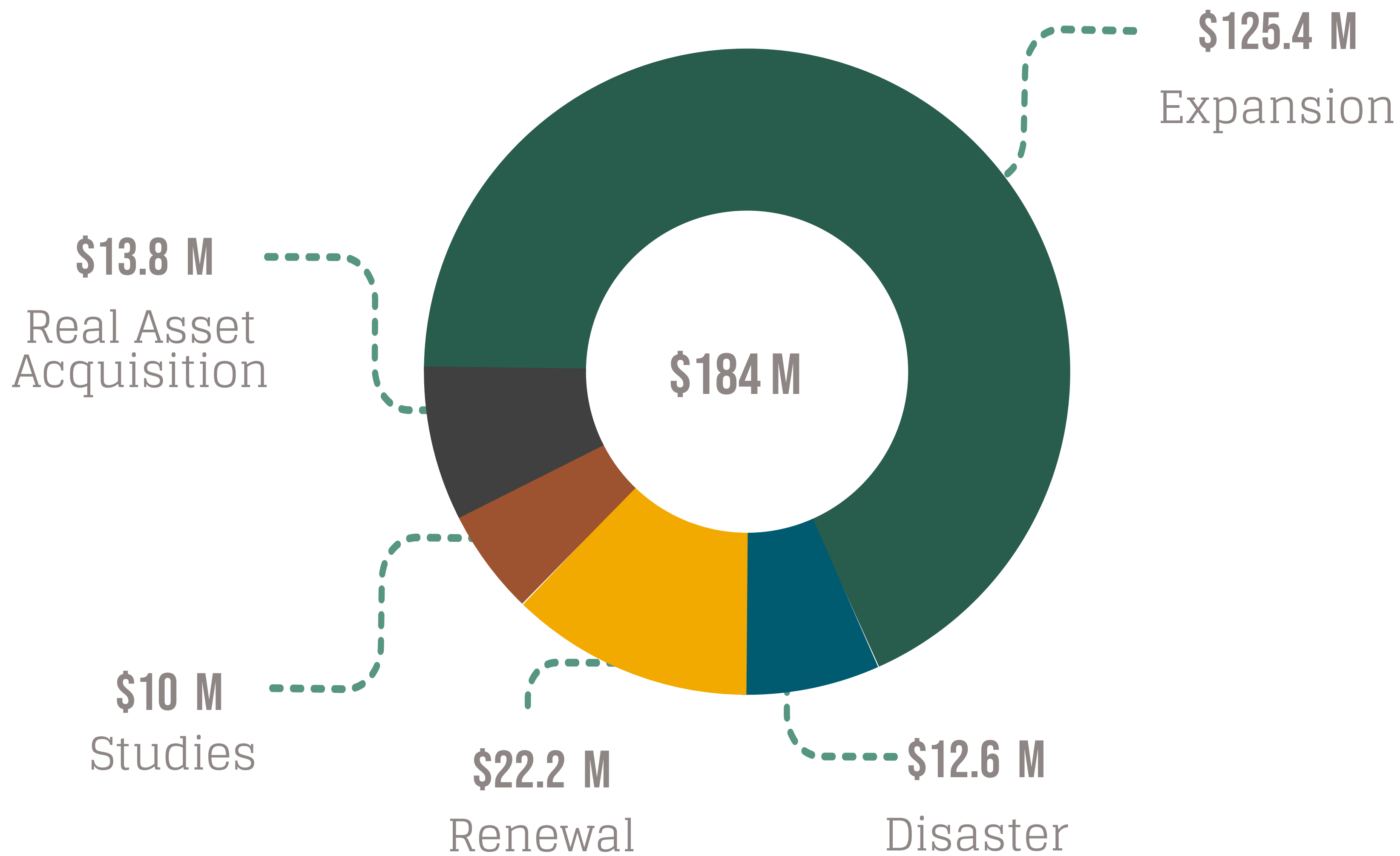
Taxing Authority	Mill Levy
School District	56.000
County Government Services	+ 21.571
County Abatements Levy	+ 0.082
Foothills Gateway Inc.	+ 0.750
Less Mill Levy Credit	- 0.540
County Government Total	21.863
City Government Services	9.797
Other Services (Water, Library, etc.)	6.136
Health / District Services	2.167
Total Mill Levy	95.963





CAPITAL PROJECT HIGHLIGHTS

2020 CAPITAL PROJECTS BY TYPE



FUNDED BY GENERAL FUND PROPERTY TAX

EXPANSION	RENEWAL
Jail Improvement - \$50.5 M	IT Replacement - \$6.9 M
Fleet Facility Replacement - \$29.5 M	Equipment Replacement - \$2.8 M
	Facilities Replacement - \$2.2 M

FUNDED BY OTHER SOURCES

EXPANSION	RENEWAL	AQUISITION	DISASTER
Behavioral Health Facility \$18.5M	Ranch Replacements \$3 M	Open Space Acquisition \$7.8 M	CR44H \$7.2 M
Ranch Master Plan \$11.8 M	Natural Resouces \$2.2 M	Emergency Operations Center \$4.9 M	CR47 \$5.4 M
Pave CR 72 \$6 M	Road & Bridge \$1.7 M		