



2013 COMMUNITY REPORT

A HIGH-LEVEL OVERVIEW
OF COUNTY **SERVICES,**
GOALS, & PERFORMANCE.



LETTER FROM THE COMMISSIONERS

Welcome to our first Community Report! One of our most important responsibilities as Commissioners is ensuring the most efficient use of tax revenue. To accomplish this, we instituted performance measures for the services the County provides. These measures let you know the value you receive for your tax dollars and help us invest funds where they get the best value and results. While this report is a summary of those important measures and services it also outlines new programs we are implementing to



(from left) **Lew Gaiter III** District I, **Steve Johnson** District II, **Tom Donnelly**, District III

achieve higher efficiencies. We think every taxpayer deserves this information. We hope it is useful to you. Learn more and connect with us at larimer.org/bocc.

99% of county services are available to ALL residents
1% of services are for unincorporated areas only (Community Development)

DO YOU KNOW?

89.8% of surveyed residents feel Larimer County services are performed adequately or better than required.

ELECTED OFFICIALS



Steve Miller
Assessor



Angela Myers
Clerk & Recorder



Patrick C. Allen, M.D.
Coroner



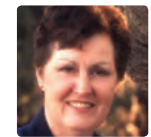
Cliff Riedel
District Attorney



Justin Smith
Sheriff



Chad Washburn
Surveyor



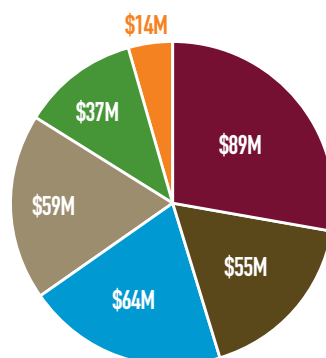
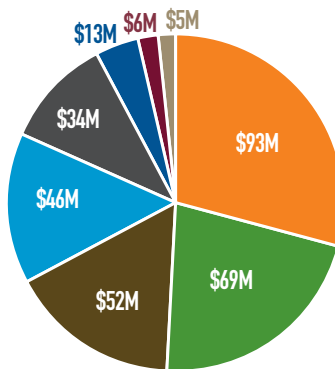
Myrna Rodenberger
Treasurer

LETTER FROM THE COUNTY MANAGER

What an honor to present the first annual Community Report of Larimer County services, performance and goals! This overview showcases the diversity of services we provide to the more than 300,000 citizens of our community. Larimer County government is dedicated to improving the quality of life we all experience and does that through our work in five broad service categories. This report touches on each of those and notes the challenges posed by two major disasters in the last two years. We hope this snapshot inspires your interest in County government and helps to open ongoing dialogue with you. Please let me know what you think: lhoffmann@larimer.org.



Linda Hoffmann
County Manager
Larimer County, Colorado
(970) 498-7004 (direct)



LARIMER COUNTY BUDGET WHERE THE MONEY COMES FROM

Property Taxes: **\$93M**
 Charges for Services: **\$69M**
 Intergovernmental Revenue: **\$52M**
 Other Financing Sources: **\$46M**
 Sales and Use Taxes: **\$34M**
 Use of Fund Balance: **\$13M**
 Interest Earnings and All Other: **\$6M**
 Licenses and Permits: **\$5M**
Total of All Sources: \$318M

Larimer County receives only **25¢** of every dollar collected through property taxes.

HOW THE MONEY IS SPENT

Non-Operational Procedural Accounts: **\$89M**
 Community Resources, Infrastructure and Planning: **\$55M**
 Public Safety Services: **\$64M**
 Human & Economic Services: **\$59M**
 Strategic Leadership & Administration: **\$37M**
 Public Records & Information Services: **\$14M**
Grand Total Budget: \$318M
Net Operational Budget: \$229M

PUBLIC SAFETY

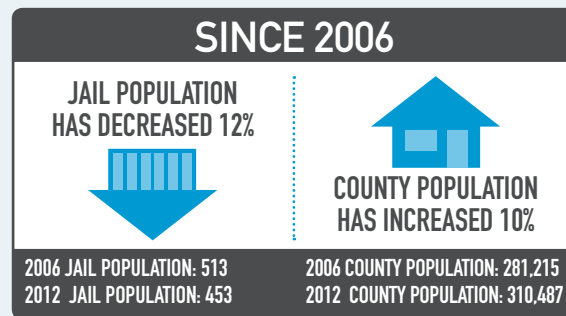
SAFE COMMUNITIES, IMPARTIAL JUSTICE



SERVICES

- Alternative Sentencing
- Community Corrections
- Crime statistics and reporting
- District Attorney
- Emergency Management
- Investigations
- Coroner
- Jail
- Patrol
- Wildland fire management

LARIMER COUNTY JAIL POPULATION



The Larimer County Jail is the ONLY jail in all of Larimer County. Through the successful use of alternative sentencing, Larimer County has lowered the average daily jail population, despite noticeable increases in population, which extends the useful life of the current facility and saves tax payers money.

IN 2012, THE LARIMER COUNTY SHERIFF'S OFFICE INVESTIGATED:

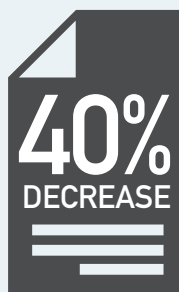
1 HOMICIDE	208 BURGLARIES
14 SEXUAL ASSAULTS	733 LARCENY / THEFT CASES
9 ROBBERIES	56 MOTOR VEHICLE THEFTS
474 ASSAULTS	6 ARSONS

The net result included 2,230 arrests for new charges.

The emergency communications center staff handled approximately 7,500 emergency 911 calls and 83,000 non-emergency calls.

MINIMIZING FAILURE TO APPEAR WARRANTS

Individuals scheduled to appear in court can expect a phone call reminding them of their appointment. This simple system has decreased "failure to appear" warrants by nearly 40%.



DO YOU KNOW?

Larimer County provides services beyond arrest for all crimes inside and outside of city limits including prosecution, sentencing and incarceration.

ALTERNATIVE SENTENCING

Alternative Sentencing is a cost effective alternative to jail time for lesser offenders. Offenders "pay back the community" through work for nonprofits and local governments and they pay administrative fees to reduce the cost of the program.

\$53/DAY SAVINGS PER OFFENDER

ALTERNATIVE SENTENCING @ \$34/DAY
 COMPARED TO INCARCERATION @ \$87/DAY



DISTRICT ATTORNEY FOR THE EIGHTH JUDICIAL DISTRICT

92% CONVICTION RATE FOR SERIOUS CRIMES

\$13.9M RESTITUTION OBTAINED FOR VICTIMS

*2012

DISASTER RESPONSE & RECOVERY

Residents rely on local government for critical support during disaster. In the last two years, Larimer County has endured two major events. In these circumstances, every single department gets involved with the common goal of protecting the lives and property of County residents.

HIGH PARK FIRE 2012

87, 200 acres burned;
264 homes and cabins destroyed

- Emergency response
- The Ranch: evacuee shelter, home for large animals
- Air quality monitoring
- Landfill regulations changed to accept debris

2013 FLOOD IN LARIMER COUNTY

\$100M in road damage; 180 structures destroyed & 420 structures damaged

- Emergency response and rescue efforts
- Damage assessment
- Road and Bridge: temporary solutions, rebuilding strategy
- Health and Human Service inspections and information

These are just a few of the many examples of the County's timely response, creative problem solving, and true public service.

COMMUNITY RESOURCES, INFRASTRUCTURE & PLANNING

QUALITY INFRASTRUCTURE. CONSCIENTIOUS PLANNING

COUNTY-OWNED OPEN SPACE AND TRAILS

TRAILS: 33% INCREASE



OPEN SPACE: 13% INCREASE

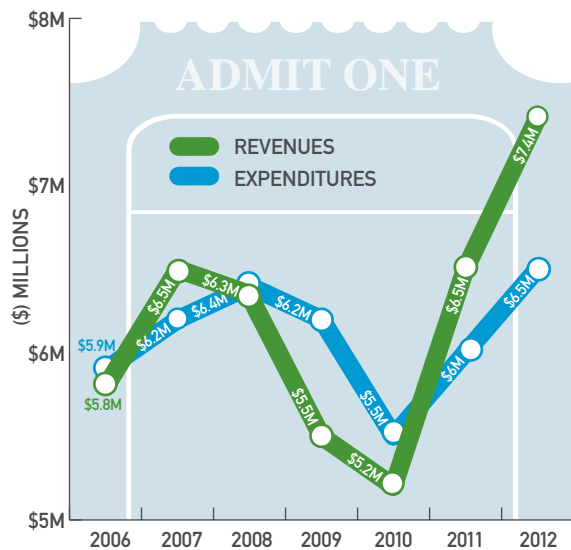


SERVICES

- Building inspections
- Community planning and development
- County parks and trails
- Engineering
- Landfill and solid waste management
- Open spaces
- Road and bridge maintenance and repair
- Rural lands
- The Ranch

THE RANCH: A COMMUNITY ASSET

The Ranch Event Complex revenues come from ticket sales, concessions, and sponsorships. Profit from events supports needed facility re-investments and assures the McKee 4-H and Community Building remains a free asset for local nonprofits and the greater community.



DO YOU KNOW?

Horsetooth Reservoir is the 2nd busiest reservoir in the state of Colorado. In 2012, the reservoir welcomed approximately 30,000 boaters.

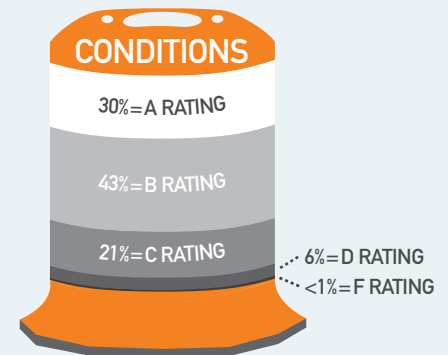
30,000

ROAD CONDITIONS AND SAFETY

Road condition grades reflect how well pavement surfaces are maintained.

Well maintained roads create a safer environment for drivers and less wear and tear on vehicles.

For safety ratings, visit the Transportation Scorecard at larimer.org/roads.

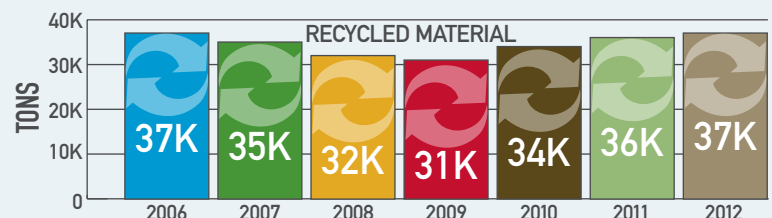


RECYCLING MADE EASY

With a County that is larger than the entire state of Delaware, a single centralized recycling center is not a realistic solution. Transfer stations provide drop-off convenience for the residents of Berthoud, Wellington, Red Feather Lakes and Estes Park. Being able to recycle closer to home encourages citizens to do more of it and it saves fuel and time. In 2012, 961.68 tons of material was recycled from transfer stations.

LANDFILL CAPACITY & RECYCLING

Recycling keeps waste out of the landfill thereby increasing its useful life and delaying the expense of building a new facility.



PUBLIC RECORDS AND INFORMATION

OPEN DATA, TRANSPARENT PROCESSES

VOTE CENTERS AS A STATE MODEL

PERCENTAGE OF REGISTERED VOTERS WHO ACTUALLY VOTED			
	US (% voted)	Colorado (% voted)	Larimer County (% voted)
2006	70.1%	76.0%	71.5%
2008	89.6%	94.7%	98.6%
2010	69.9%	79.4%	98.1%
2012	86.8%	94.7%	98.8%

Larimer was the first County in the state to develop, test, and implement the "Vote Center" model for elections. Now called Voting Service and Polling Centers, the model has been replicated throughout Colorado. The Vote Center model makes it easy for registered voters to participate in elections by allowing them to cast ballots at any voting location regardless of precinct or district. In short: with Vote Centers, there's no wrong place to vote!



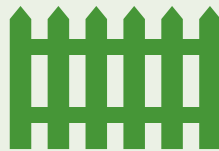
ESSENTIAL PUBLIC RECORDS



MARRIAGE LICENSES:
2,856 IN 2012



VEHICLE REGISTRATIONS:
324,029 IN 2012



PROPERTIES ASSESSED:
150,629 IN 2012



In 2012, the Larimer County treasurer collected taxes on **149,699** properties.

SERVICES

- Birth and death certificates
- Elections and voter registration
- Marriage licenses
- Property value assessment & tax collection
- Public records
- Vehicle registration

STRATEGIC LEADERSHIP, ADMINISTRATION

ENGAGED SERVICE, EFFICIENT GOVERNMENT



SERVICES

- Budgeting
- Human Resources
- Finance
- County Attorney
- Performance Measurement
- Strategic Planning

GUIDING PRINCIPLES

Larimer County will add value to the lives of its citizens by:

- Being good stewards of our public resources
- Being customer driven
- Empowering people to take responsibility
- Building partnerships
- Being a fulfilling & enjoyable place to work

CITIZEN SURVEY RESULTS

- 3.6** LARIMER COUNTY IS MOVING IN THE RIGHT DIRECTION
- 3.6** I HAVE CONFIDENCE IN THE LARIMER COUNTY GOVERNMENT
- 4.3** THE OVERALL QUALITY OF LIFE IN LARIMER COUNTY IS VERY GOOD

1=STRONGLY DISAGREE, 5=STRONGLY AGREE



88% of surveyed residents feel county services are "Highly Important" or "Important."

STRATEGIC PLANNING

Citizens, elected offices, and Larimer County employees are working together to move us toward a desired future. The first phase of the comprehensive planning effort defined a vision and goals and was completed in May 2013. Phase II established objectives and performance measures. Phase III integrates these elements into Department work plans. Read more at larimer.org/boccc/future.



HUMAN AND ECONOMIC

HEALTHY PEOPLE, THRIVING ECONOMY



SERVICES

- Adult protective services
- Air quality monitoring and education
- Child care assistance
- Child protection and foster care
- Child support
- Communicable disease control
- Food stamps/food assistance
- Health education
- Immunizations
- Medicaid
- Resources for seniors
- Restaurant inspections
- Temporary Assistance for Needy Families
- Water quality regulation and inspection
- Workforce training and counseling



RESTAURANT INSPECTIONS

The food safety program protects public health through education, licensing and inspections of the food service industry.

1,844
INSPECTIONS PERFORMED

2012 RESTAURANTS RATINGS

- 34% EXCELLENT
- 33% GOOD
- 18% AVERAGE
- 12% MARGINAL
- 3% INADEQUATE

DO YOU KNOW?

Larimer County prevents and controls contagious diseases by monitoring illnesses from people, food, water, animals, and insects. The County also protects against West Nile virus, rabies, Tuberculosis, and other diseases.

WORKFORCE CENTER

The Workforce Center provides programs and training that help create a skilled, knowledgeable and prepared workforce. The Workforce Center curriculum is guided by the Workforce Investment Board (comprised of employers and community leaders) which identifies the workforce skills needed by local companies to be successful.

4,616

JOB POSTED BY THE WORKFORCE CENTER IN 2012

18,039

JOB SEEKERS SERVED IN 2012

CITIZEN SURVEY RESULTS

3.8

LARIMER COUNTY IS A GREAT PLACE TO WORK

1=STRONGLY DISAGREE, 5=STRONGLY AGREE



CHILD PROTECTION: A STATE LEADER

When compared to other large counties in Colorado, Larimer County ranks first or second in most state-wide performance goals and consistently exceeds national standards in protecting children.

RANKED #1 IN COLORADO:

- Children who remain in the home: 95% (national goal: 85%)
- Average daily populations of children placed in group care facilities: .2 per 1,000 children (national goal: less than 1)

RANKED #2 IN COLORADO:

- Average daily population of children placed in out of home care (foster care and group care facilities): 2.6 per 1,000 kids (national goal is less than 5)
- Children in foster care for more than 2 years: 21% – goal is to achieve permanency within two years (national goal: less than 28%)

*2012

BETTER DECISIONS TO HELP KIDS

Larimer County was the first county in the state of Colorado to implement the RED (Review, Evaluate, and Direct) Team model where critical decisions about reports of abuse and neglect are made as a collaborative team as opposed to by an individual case manager. The team, including case managers, supervisors, and others, shares the responsibility and accountability for how reports are processed. The model has proven so successful, that it is now a required process in the state of Colorado.

AWARDS

2013 In-House Innovation Award, Larimer County, new method to transition violent inmates from high security to general population, April 2013

Certificate of Achievement for Excellence in Financial Reporting, Government Finance Officers Association, March 2013 (29th consecutive year)

Starburst Award for Excellence, Colorado State Lottery, Plug in to Nature program, October 2012

"Bright Idea" award, Harvard Kennedy School of Government, Health and Human Services Software Development, September 2012

1st Place Savvy Web Application Competition, 25th Annual Geographic Information System for Transportation Symposium, Road Information Locator (RIL) application, May 2012

STAY CONNECTED -PUBLIC COMMUNICATIONS

Become an engaged citizen at www.larimer.org:

- Boards & Commissions
- Larimer County 101
- Volunteer Opportunities
- Foster Families
- Public Comment
- Citizen Meetings

contact: Deni La Rue, 970-498-7150, dlarue@larimer.org

